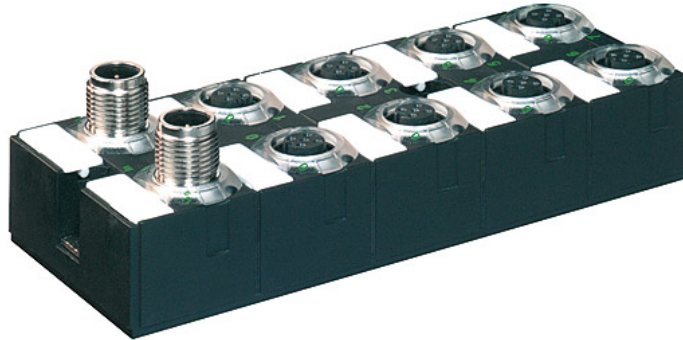


**Cube67 I/O compact module 16 multifunction channels**

Compact module  
DIO16  
8 × M12

**Image**

Vicarious picture

**Approvals****Internal communication**

|                     |  |
|---------------------|--|
| Module supply       | via internal system connection   |
| LED display         | US: sensor supply and internal supply voltage (green: OK); UA: actuator supply (green: OK) |
| Current consumption | max. 50 mA   |
| Terminator          | integrated into the module   |

**Input**

|                  |   |
|------------------|---|
| Sensor supply US | 24 V DC, (EN 61131-2), ≤ 200 mA per M12 female                      |
| Type             | for 3-wire sensors or mechanical switches, p-switching (EN 61131-2) |
| Input filter     | 1 ms  |
| LED display      | LED (yellow) per input  |

**Parameterization**

|       |                         |
|-------|-------------------------|
| PIN 2 | Input/output/diagnostic |
| PIN 4 | Input/output            |

**Diagnostic input**

|               |   |
|---------------|---|
| Sensor supply | 24 V DC, (EN 61131-2), ≤ 200 mA per M12 female                      |
| Type          | for 3-wire sensors or mechanical switches, p-switching (EN 61131-2) |
| Function      | 24 V = high = OK (LED off); 0 V = low = error (LED red)             |
| Input filter  | 1 ms  |

**Output**

|                                  |   |
|----------------------------------|---|
| Actuator supply (M12 left side)  | 24 V DC, (EN 61131-2), via system connection (total max. 4 A)                       |
| Actuator supply (M12 right side) | 24 V DC, (EN 61131-2), via separate supply (total max. 4 A)                         |
| Switching current per output     | max. 0.5 A, short-circuit and overload protected                                    |
| Lamp load                        | 10 W  |
| LED display                      | LED (yellow) output set; LED (red) output short-circuit; LED (red) fault connection |

All data on this data sheet was compiled carefully.

Liability regarding correctness, completeness, and actuality is limited to gross negligence. Created: 05/12

**Diagnostics**

|                                    |  |
|------------------------------------|--|
| Sensor/module supply US            | LED (red): under voltage $\leq 18$ V                             |
| Actuator supply UA                 | LED (red): under voltage $\leq 18$ V, if output is parameterized |
| Communication to the bus module US | LED (green) blinking: no data transfer                           |
| Actuator short-circuit/overload    | LED (red): PIN 2 and/or PIN 4, per output                        |
| Sensor overload                    | LED (red): PIN 2 and/or PIN 4, per input                         |
| Diagnostic acc. to DESINA® (PIN 2) | LED (red) per M12 female   |
| Actuator warning                   | LED (red): PIN 2 and/or PIN 4, per output                        |

**General data**

|                   |   |
|-------------------|---|
| Protection        | IP67  |
| Temperature range | 0...+55 °C (storage temperature -20...+75 °C) |
| Mounting method   | 4 hole screw mounting                         |

**Commercial data**

|                       |          |
|-----------------------|----------|
| Gross weight          | 210      |
| Net weight            | 210      |
| Weight unit           | gram     |
| Basic unit            | pc.      |
| Customs tariff number | 85176200 |
| Unit (piece)          | 1        |
| Limited value         | 1        |

**Comments**

Housing fully potted.  
For connection cables please see chapter "Field passive"

Dimension drawing

