



2 × PNP normally open/normally closed			
PNP normally open/normally closed		BFB0006 BFB 75K-002-P-S75	
PNP normally open/normally closed, analog, voltage 0...10 V	BFB0008 BFB 75K-003-P-02		
Series	75K	75K	
Dimension	10.4 x 35.4 x 79.3 mm	10.4 x 35.4 x 84 mm	
Principle of operation	Fiber optic device	Fiber optic device	
Input function	Teach Sn, Key disable on/off	Teach Sn, Key disable on/off	
Setting	Rated switching distance (Sn), 2 values, Duration of single pulse, Mode normal/fine/fast/far, LCD read direction, Time function, Factory setting (Reset), display on/off, Delay time, Key disable on/off, Light-on/dark-on, Sensitivity (Sn)	LCD read direction, Time function, Factory setting (Reset), Mode normal/fine/fast/far, Duration of single pulse, Rated switching distance (Sn), 2 values, display on/off, Delay time, Key disable on/off, Light-on/dark-on, Sensitivity (Sn)	
Operating voltage Ub	—	10...30 VDC	
Light type	LED, red light	LED, red light	
Connection	Cable, 2.00 m, PVC	Connector, M8x1 connector, 4-pin	
Housing material	ABS	ABS	
Switching frequency	8000 Hz /1000 Hz/125 Hz	8000 Hz /1000 Hz/125 Hz	
Approval/Conformity	cULus, CE	cULus, CE	
Productview	Page 538	Page 538	



			BFB000C BFB M18M-011-P-S4	BFB000E BFB M18M-012-P-S4
	BFB0003 BFB 75K-001-P-02	BFB0004 BFB 75K-001-P-S75		
	75K	75K	18M	18M
	10.4 x 35.4 x 79.3 mm	10.4 x 35.4 x 84 mm	Ø 18 x 75 mm	Ø 18 x 75 mm
	Fiber optic device	Fiber optic device	Photoelectric sensor	Photoelectric sensor
	Key disable on/off, Same function as button	Same function as button, Key disable on/off	—	—
	Factory setting (Reset), Light-on/dark-on, Sensitivity (Sn)	Light-on/dark-on, Factory setting (Reset), Sensitivity (Sn)	Sensitivity (Sn)	Sensitivity (Sn)
	10...30 VDC	10...30 VDC	10...30 VDC	10...30 VDC
	LED, red light	LED, red light	LED infrared	LED infrared
	Cable, 2.00 m, PVC	Connector, M8x1 connector, 4-pin	Connector-plug, 4-pin	Connector-plug, 4-pin
	ABS	ABS	Brass	Brass
	1500 Hz	1500 Hz	1000 Hz	3000 Hz
	cULus, CE, EAC	CE, cULus, EAC	CE, EAC, cULus, DC, Code 81U2	CE, EAC, cULus, DC, Code 81U2
	Page 538	Page 538	Page 538	Page 538

Sensors

RFID

Machine Vision and Optical Identification

Human Machine Interfaces

Systems

Safety

Industrial Networking

Power Supply

Connectivity

Accessories



2 × PNP normally open/normally closed	BFB0009 BFB M18M-001-P-S4	BFB000A BFB M18M-002-P-S4	
PNP normally open, PNP normally closed			
Series	18M	18M	
Dimension	Ø 18 x 75 mm	Ø 18 x 75 mm	
Principle of operation	Photoelectric sensor	Photoelectric sensor	
Input function	—	—	
Setting	Sensitivity (Sn)	Sensitivity (Sn)	
Operating voltage U _b	10...30 VDC	10...30 VDC	
Light type	LED, red light	LED, red light	
Connection	Connector-plug, 4-pin	Connector-plug, 4-pin	
Housing material	Brass	Brass	
Switching frequency	1000 Hz	3000 Hz	
Approval/Conformity	CE, EAC, cULus, DC, Code 81U2	CE, EAC, cULus, DC, Code 81U2	
Productview	Page 538	Page 538	



	BOS00JJ BOS 18KF-PA-1FR-S4-C			
	18KF			
	Ø 18 x 87 mm			
	Fiber optic device			
	—			
	Sensitivity (Sn)			
	10...30 VDC			
	LED, red light			
	Connector, M12x1 connector, 4-pin			
	PBT			
	1000 Hz			
	CE, cULus			
	Page 538			

Sensors

RFID

Machine Vision and
Optical Identification

Human Machine
Interfaces

Systems

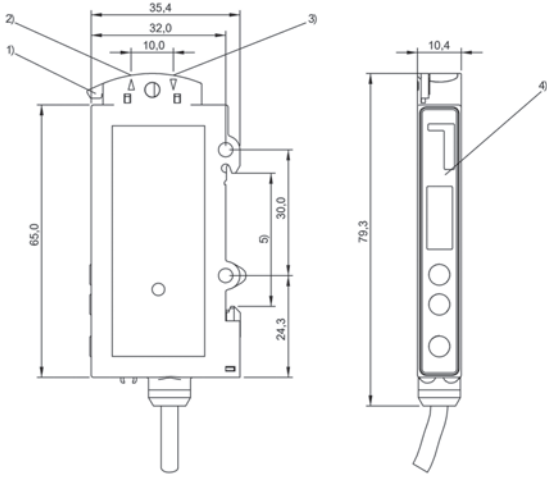
Safety

Industrial Networking

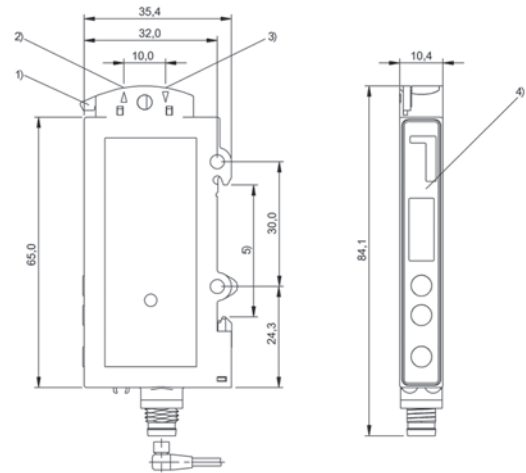
Power Supply

Connectivity

Accessories



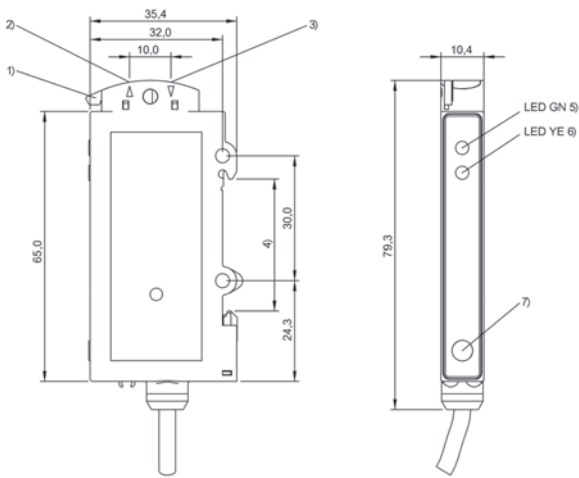
1) Fiber clamp, 2) Receiver, 3) Emitter, 4) Display and control panel, 5) For DIN rail 35mm



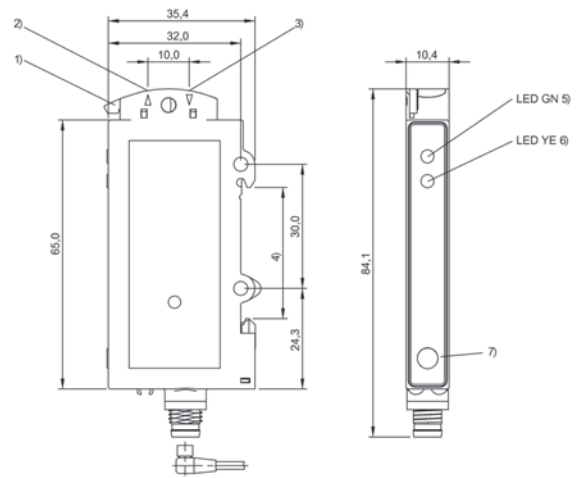
1) Fiber clamp, 2) Receiver, 3) Emitter, 4) Display and control panel, 5) For DIN rail 35mm

BFB0008

BFB0006



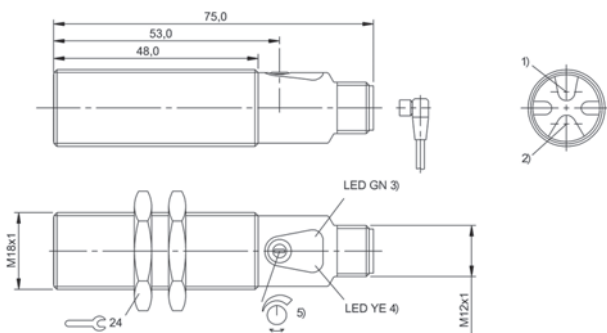
1) Fiber clamp, 2) Emitter, 3) Receiver, 4) For DIN rail 35mm, 5) stability, 6) Output function, 7) Sn



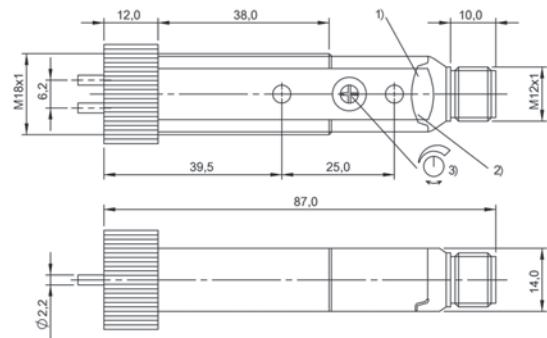
1) Fiber clamp, 2) Emitter, 3) Receiver, 4) For DIN rail 35mm, 5) stability, 6) Output function, 7) Sn

BFB0003

BFB0004



1) Optical axis receiver, 2) Optical axis emitter, 3) Operating voltage, 4) Light reception/limit area, 5) Sn



1) Output function, 2) Stability, 3) Sn

BFB000C, BFB000E, BFB0009, BFB000A

BOS00JJ

Accessories

Connectivity

Power Supply

Industrial Networking

Safety

Systems

Human Machine Interfaces

Machine Vision and Optical Identification

RFID

Sensors



	BF0000F BFO 18A-LAA-MZG-20-0,5	BF0000H BFO 18A-LAA-MZG-20-1	BF0000J BFO 18A-LAA-MZG-20-1,5	
Version	M5, standard	M5, standard	M5, standard	
Use	For fiber optic base units BFB	For fiber optic base units BFB	For fiber optic base units BFB	
Reference base unit	BFB M18M-011-P-S4	BFB M18M-011-P-S4	BFB M18M-011-P-S4	
Fiber type material	Glass	Glass	Glass	
Cable length L	0.50 m	1.00 m	1.50 m	
Material jacket	Stainless steel	Stainless steel	Stainless steel	
Range	200 mm	200 mm	200 mm	
Ambient temperature	-20...250 °C	-20...250 °C	-20...250 °C	
Material	Brass blackened	Brass blackened	Brass blackened	
Active surface, fibers	Bundle Ø 1.0 mm	Bundle Ø 1.0 mm	Bundle Ø 1.0 mm	
Active surface, fiber arrangement	Homogeneous bundle	Homogeneous bundle	Homogeneous bundle	
Protection degree	IP50	IP50	IP50	
Productview	Page 568	Page 568	Page 568	



	BF0000M BFO 18A-LAA-UZG-20-0,5	BF0000N BFO 18A-LAA-UZG-20-1	BF0001Z BFO 18A-LGG-MZG-10-0,5	BF00020 BFO 18A-LGG-MZG-10-1	BF00023 BFO 18A-LGG-SMG-10-0,5
	M5, standard	M5, standard	Ø 2, standard	Ø 2, standard	Ø 2, standard
	For fiber optic base units BFB	For fiber optic base units BFB	For fiber optic base units BFB	For fiber optic base units BFB	For fiber optic base units BFB
	BFB M18M-011-P-S4	BFB M18M-011-P-S4	BFB M18M-011-P-S4	BFB M18M-011-P-S4	BFB M18M-011-P-S4
	Glass	Glass	Glass	Glass	Glass
	0.50 m	1.00 m	0.50 m	1.00 m	0.50 m
	PUR	PUR	Stainless steel	Stainless steel	Silicone, on stainless steel
	200 mm	200 mm	100 mm	100 mm	100 mm
	-20...85 °C	-20...85 °C	-20...250 °C	-20...250 °C	-40...150 °C
	Brass blackened	Brass blackened	Stainless steel	Stainless steel	Stainless steel
	Bundle Ø 1.0 mm	Bundle Ø 1.0 mm	Bundle Ø 1.4 mm	Bundle Ø 1.4 mm	Bundle Ø 1.4 mm
	Homogeneous bundle	Homogeneous bundle	Homogeneous bundle	Homogeneous bundle	Homogeneous bundle
	IP67	IP67	IP50	IP50	IP67
	Page 568	Page 568	Page 569	Page 569	Page 569

Sensors

RFID

Machine Vision and Optical Identification

Human Machine Interfaces

Systems

Safety

Industrial Networking

Power Supply

Connectivity

Accessories



	BF00024 BFO 18A-LGG-SMG-10-1	BF0000U BFO 18A-LCC-SMG-20-0,5	BF0000W BFO 18A-LCC-SMG-20-1	
Version	Ø 2, standard	Ø 6, standard	Ø 6, standard	
Use	For fiber optic base units BFB	For fiber optic base units BFB	For fiber optic base units BFB	
Reference base unit	BFB M18M-011-P-S4	BFB M18M-011-P-S4	BFB M18M-011-P-S4	
Fiber type material	Glass	Glass	Glass	
Cable length L	1.00 m	0.50 m	1.00 m	
Material jacket	Silicone, on stainless steel	Silicone, on stainless steel	Silicone, on stainless steel	
Range	100 mm	200 mm	200 mm	
Ambient temperature	-40...150 °C	-40...150 °C	-40...150 °C	
Material	Stainless steel	Brass blackened	Brass blackened	
Active surface, fibers	Bundle Ø 1.4 mm	Bundle Ø 1.0 mm	Bundle Ø 1.0 mm	
Active surface, fiber arrangement	Homogeneous bundle	Homogeneous bundle	Homogeneous bundle	
Protection degree	IP67	IP67	IP67	
Productview	Page 569	Page 570	Page 570	



	BF0000Z BFO 18A-LCC-UZG-20-1	BF0003Y BFO 18V-LCC-MZG-23-0,5	BF0003Z BFO 18V-LCC-MZG-23-0,75	BF00042 BFO 18V-LCC-SMG-23-0,5	BF0001P BFO 18A-LFF-MZG-10-0,5
	Ø 6, standard	Ø 6, standard	Ø 6, standard	Ø 6, standard	Ø 2, 90° optics
	For fiber optic base units BFB	For fiber optic base units BFB	For fiber optic base units BFB	For fiber optic base units BFB	For fiber optic base units BFB
	BFB M18M-011-P-S4	BFB M18M-011-P-S4	BFB M18M-011-P-S4	BFB M18M-011-P-S4	BFB M18M-011-P-S4
	Glass	Glass	Glass	Glass	Glass
	1.00 m	0.50 m	0.75 m	0.50 m	0.50 m
	PUR	Stainless steel	Stainless steel	Silicone, on stainless steel	Stainless steel
	200 mm	200 mm	200 mm	200 mm	100 mm
	-20...85 °C	-20...250 °C	-20...250 °C	-40...150 °C	-20...250 °C
	Brass blackened	Brass blackened	Brass blackened	Brass blackened	Stainless steel
	Bundle Ø 1.0 mm	Bundle Ø 2.1 mm	Bundle Ø 2.1 mm	Bundle Ø 2.1 mm	Bundle Ø 1.4 mm
	Homogeneous bundle	Homogeneous bundle	Homogeneous bundle	Homogeneous bundle	Homogeneous bundle
	IP67	IP50	IP50	IP67	IP50
	Page 570	Page 571	Page 571	Page 571	Page 572



	BF0001R BFO 18A-LFF-MZG-10-1	BF0001U BFO 18A-LFF-SMG-10-0,5	BF0001W BFO 18A-LFF-SMG-10-1	
Version	Ø 2, 90° optics	Ø 2, 90° optics	Ø 2, 90° optics	
Use	For fiber optic base units BFB	For fiber optic base units BFB	For fiber optic base units BFB	
Reference base unit	BFB M18M-011-P-S4	BFB M18M-011-P-S4	BFB M18M-011-P-S4	
Fiber type material	Glass	Glass	Glass	
Cable length L	1.00 m	0.50 m	1.00 m	
Material jacket	Stainless steel	Silicone, on stainless steel	Silicone, on stainless steel	
Range	100 mm	100 mm	100 mm	
Ambient temperature	-20...250 °C	-40...150 °C	-40...150 °C	
Material	Stainless steel	Stainless steel	Stainless steel	
Active surface, fibers	Bundle Ø 1.4 mm	Bundle Ø 1.4 mm	Bundle Ø 1.4 mm	
Active surface, fiber arrangement	Homogeneous bundle	Homogeneous bundle	Homogeneous bundle	
Protection degree	IP50	IP67	IP67	
Productview	Page 572	Page 572	Page 572	



	BF00013 BFO 18A-LEE-MZG-20-0,5	BF00014 BFO 18A-LEE-MZG-20-1	BF00019 BFO 18A-LEE-SMG-20-0,5	BF0001A BFO 18A-LEE-SMG-20-1	BF0001F BFO 18A-LEE-UZG-20-0,5
	Ø 6, 90° optics	Ø 6, 90° optics	Ø 6, 90° optics	Ø 6, 90° optics	Ø 6, 90° optics
	For fiber optic base units BFB	For fiber optic base units BFB	For fiber optic base units BFB	For fiber optic base units BFB	For fiber optic base units BFB
	BFB M18M-011-P-S4	BFB M18M-011-P-S4	BFB M18M-011-P-S4	BFB M18M-011-P-S4	BFB M18M-011-P-S4
	Glass	Glass	Glass	Glass	Glass
	0.50 m	1.00 m	0.50 m	1.00 m	0.50 m
	Stainless steel	Stainless steel	Silicone, on stainless steel	Silicone, on stainless steel	PUR
	200 mm	200 mm	200 mm	200 mm	200 mm
	-20...250 °C	-20...250 °C	-40...150 °C	-40...150 °C	-20...85 °C
	Brass blackened	Brass blackened	Brass blackened	Brass blackened	Brass blackened
	Bundle Ø 1.0 mm	Bundle Ø 1.0 mm	Bundle Ø 1.0 mm	Bundle Ø 1.0 mm	Bundle Ø 1.0 mm
	Homogeneous bundle	Homogeneous bundle	Homogeneous bundle	Homogeneous bundle	Homogeneous bundle
	IP50	IP50	IP67	IP67	IP67
	Page 573	Page 573	Page 573	Page 573	Page 574



	BF0001H BFO 18A-LEE-UZG-20-1	BF00047 BFO 18V-LDD-MZG-23-0,75	BF00049 BFO 18V-LDD-MZG-23-2,0	
Version	Ø 6, 90° optics	Ø 6, 90° optics	Ø 6, 90° optics	
Use	For fiber optic base units BFB	For fiber optic base units BFB	For fiber optic base units BFB	
Reference base unit	BFB M18M-011-P-S4	BFB M18M-011-P-S4	BFB M18M-011-P-S4	
Fiber type material	Glass	Glass	Glass	
Cable length L	1.00 m	0.75 m	2.00 m	
Material jacket	PUR	Stainless steel	Stainless steel	
Range	200 mm	200 mm	200 mm	
Ambient temperature	-20...85 °C	-20...250 °C	-20...250 °C	
Material	Brass blackened	Brass blackened	Brass blackened	
Active surface, fibers	Bundle Ø 1.0 mm	Bundle Ø 2.1 mm	Bundle Ø 2.1 mm	
Active surface, fiber arrangement	Homogeneous bundle	Homogeneous bundle	Homogeneous bundle	
Protection degree	IP67	IP50	IP50	
Productview	Page 574	Page 574	Page 574	



	BF0004A BFO 18V-LDD-MZG-23-3	BF0004C BFO 18V-LDD-SMG-23-0,5	BF0004F BFO 18V-LDD-SMG-23-1	BF00026 BFO 18A-XAA-MZG-30-0,5	BF00027 BFO 18A-XAA-MZG-30-1
	Ø 6, 90° optics	Ø 6, 90° optics	Ø 6, 90° optics	M5, standard	M5, standard
	For fiber optic base units BFB	For fiber optic base units BFB	For fiber optic base units BFB	For fiber optic base units BFB	For fiber optic base units BFB
	BFB M18M-011-P-S4	BFB M18M-011-P-S4	BFB M18M-011-P-S4	BFB M18M-011-P-S4	BFB M18M-011-P-S4
	Glass	Glass	Glass	Glass	Glass
	3.00 m	0.50 m	1.00 m	0.50 m	1.00 m
	Stainless steel	Silicone, on stainless steel	Silicone, on stainless steel	Stainless steel	Stainless steel
	200 mm	200 mm	200 mm	20 mm	20 mm
	-20...250 °C	-40...150 °C	-40...150 °C	-20...250 °C	-20...250 °C
	Brass blackened	Brass blackened	Brass blackened	Brass blackened	Brass blackened
	Bundle Ø 2.1 mm	Bundle Ø 2.1 mm	Bundle Ø 2.1 mm	Bundle Ø 3.0 mm	Bundle Ø 3.0 mm
	Homogeneous bundle	Homogeneous bundle	Homogeneous bundle	Segmented bundle	Segmented bundle
	IP50	IP67	IP67	IP50	IP50
	Page 574	Page 575	Page 575	Page 575	Page 575



	BF000H3 BFO 18A-XAA-MZG-30-5	BF0002F BFO 18A-XAA-SMG-30-0,5	BF0002H BFO 18A-XAA-SMG-30-1	
Version	M5, standard	M5, standard	M5, standard	
Use	For fiber optic base units BFB	For fiber optic base units BFB	For fiber optic base units BFB	
Reference base unit	BFB M18M-011-P-S4	BFB M18M-011-P-S4	BFB M18M-011-P-S4	
Fiber type material	Glass	Glass	Glass	
Cable length L	5.00 m	0.50 m	1.00 m	
Material jacket	Stainless steel	Silicone, on stainless steel	Silicone, on stainless steel	
Range	20 mm	20 mm	20 mm	
Ambient temperature	-20...250 °C	-40...150 °C	-40...150 °C	
Material	Brass blackened	Brass blackened	Brass blackened	
Active surface, fibers	Bundle Ø 3.0 mm	Bundle Ø 3.0 mm	Bundle Ø 3.0 mm	
Active surface, fiber arrangement	Segmented bundle	Segmented bundle	Segmented bundle	
Protection degree	IP50	IP67	IP67	
Productview	Page 575	Page 576	Page 576	



	BF0002M BFO 18A-XAA-UZG-30-0,5	BF0002N BFO 18A-XAA-UZG-30-1	BF000H8 BFO NU1-XB-05K-MZG-11-01	BF0003R BFO 18A-XAG-MZG-15-0,5	BF0003T BFO 18A-XAG-MZG-15-1
	M5, standard	M5, standard	M4, standard	Ø 2, standard	Ø 2, standard
	For fiber optic base units BFB	For fiber optic base units BFB	For photoelectric color sensors BFS	For fiber optic base units BFB	For fiber optic base units BFB
	BFB M18M-011-P-S4	BFB M18M-011-P-S4	BFS 33M-GSS-..	BFB M18M-011-P-S4	BFB M18M-011-P-S4
	Glass	Glass	Glass	Glass	Glass
	0.50 m	1.00 m	1.00 m	0.50 m	1.00 m
	PUR	PUR	PE	Stainless steel	Stainless steel
	20 mm	20 mm	60 mm	10 mm	10 mm
	-20...85 °C	-20...85 °C	-20...170 °C	-20...250 °C	-20...250 °C
	Brass blackened	Brass blackened	Stainless steel (1.4305)	Stainless steel	Stainless steel
	Bundle Ø 3.0 mm	Bundle Ø 3.0 mm	Ø 1.0 mm	Bundle Ø 1.7 mm	Bundle Ø 1.7 mm
	Segmented bundle	Segmented bundle	Ring around individual fiber	Segmented bundle	Segmented bundle
	IP67	IP67	IP50	IP50	IP50
	Page 576	Page 576	Page 576	Page 576	Page 576



	BF0002U BFO 18A-XAC-SMG-30-0,5	BF0002W BFO 18A-XAC-SMG-30-1	BF0004M BFO 18V-XAC-MZG-30-0,5	
Version	Ø 6, standard	Ø 6, standard	Ø 6, standard	
Use	For fiber optic base units BFB	For fiber optic base units BFB	For fiber optic base units BFB	
Reference base unit	BFB M18M-011-P-S4	BFB M18M-011-P-S4	BFB M18M-011-P-S4	
Fiber type material	Glass	Glass	Glass	
Cable length L	0.50 m	1.00 m	0.50 m	
Material jacket	Silicone, on stainless steel	Silicone, on stainless steel	Stainless steel	
Range	20 mm	20 mm	20 mm	
Ambient temperature	-40...150 °C	-40...150 °C	-20...250 °C	
Material	Brass blackened	Brass blackened	Brass blackened	
Active surface, fibers	Bundle Ø 3.0 mm	Bundle Ø 3.0 mm	Bundle Ø 3.0 mm	
Active surface, fiber arrangement	Segmented bundle	Segmented bundle	Segmented bundle	
Protection degree	IP67	IP67	IP50	
Productview	Page 576	Page 576	Page 576	



	BF0004P BFO 18V-XAC-SMG-30-0,5	BF0004R BFO 18V-XAC-SMG-30-1	BF0003H BFO 18A-XAF-MZG-15-0,5	BF0003J BFO 18A-XAF-MZG-15-1	BF0003M BFO 18A-XAF-SMG-15-0,5
	Ø 6, standard	Ø 6, standard	Ø 2, 90° optics	Ø 2, 90° optics	Ø 2, 90° optics
	For fiber optic base units BFB	For fiber optic base units BFB	For fiber optic base units BFB	For fiber optic base units BFB	For fiber optic base units BFB
	BFB M18M-011-P-S4	BFB M18M-011-P-S4	BFB M18M-011-P-S4	BFB M18M-011-P-S4	BFB M18M-011-P-S4
	Glass	Glass	Glass	Glass	Glass
	0.50 m	1.00 m	0.50 m	1.00 m	0.50 m
	Silicone, on stainless steel	Silicone, on stainless steel	Stainless steel	Stainless steel	Silicone, on stainless steel
	20 mm	20 mm	10 mm	10 mm	10 mm
	-40...150 °C	-40...150 °C	-20...250 °C	-20...250 °C	-40...150 °C
	Brass blackened	Brass blackened	Stainless steel	Stainless steel	Stainless steel
	Bundle Ø 3.0 mm	Bundle Ø 3.0 mm	Bundle Ø 1.4 mm	Bundle Ø 1.4 mm	Bundle Ø 1.4 mm
	Segmented bundle	Segmented bundle	Segmented bundle	Segmented bundle	Segmented bundle
	IP67	IP67	IP50	IP50	IP67
	Page 576	Page 576	Page 576	Page 576	Page 577

Sensors

RFID

Machine Vision and
Optical Identification

Human Machine
Interfaces

Systems

Safety

Industrial Networking

Power Supply

Connectivity

Accessories



	BFO003N BFO 18A-XAF-SMG-15-1	BFO0031 BFO 18A-XAE-MZG-30-0,5	BFO0032 BFO 18A-XAE-MZG-30-1	
Version	Ø 2, 90° optics	Ø 6, 90° optics	Ø 6, 90° optics	
Use	For fiber optic base units BFB	For fiber optic base units BFB	For fiber optic base units BFB	
Reference base unit	BFB M18M-011-P-S4	BFB M18M-011-P-S4	BFB M18M-011-P-S4	
Fiber type material	Glass	Glass	Glass	
Cable length L	1.00 m	0.50 m	1.00 m	
Material jacket	Silicone, on stainless steel	Stainless steel	Stainless steel	
Range	10 mm	20 mm	20 mm	
Ambient temperature	-40...150 °C	-20...250 °C	-20...250 °C	
Material	Stainless steel	Brass blackened	Brass blackened	
Active surface, fibers	Bundle Ø 1.4 mm	Bundle Ø 3.0 mm	Bundle Ø 3.0 mm	
Active surface, fiber arrangement	Segmented bundle	Segmented bundle	Segmented bundle	
Protection degree	IP67	IP50	IP50	
Productview	Page 577	Page 577	Page 577	



	BF00037 BFO 18A-XAE-SMG-30-0,5	BF00038 BFO 18A-XAE-SMG-30-1	BF0003C BFO 18A-XAE-UZG-30-0,5	BF0003E BFO 18A-XAE-UZG-30-1	BF0004U BFO 18V-XAD-MZG-30-0,5
	Ø 6, 90° optics	Ø 6, 90° optics	Ø 6, 90° optics	Ø 6, 90° optics	Ø 6, 90° optics
	For fiber optic base units BFB	For fiber optic base units BFB	For fiber optic base units BFB	For fiber optic base units BFB	For fiber optic base units BFB
	BFB M18M-011-P-S4	BFB M18M-011-P-S4	BFB M18M-011-P-S4	BFB M18M-011-P-S4	BFB M18M-011-P-S4
	Glass	Glass	Glass	Glass	Glass
	0.50 m	1.00 m	0.50 m	1.00 m	0.50 m
	Silicone, on stainless steel	Silicone, on stainless steel	PUR	PUR	Stainless steel
	20 mm	20 mm	20 mm	20 mm	20 mm
	-40...150 °C	-40...150 °C	-20...85 °C	-20...85 °C	-20...70 °C
	Brass blackened	Brass blackened	Brass blackened	Brass blackened	Brass blackened
	Bundle Ø 3.0 mm	Bundle Ø 3.0 mm	Bundle Ø 3.0 mm	Bundle Ø 3.0 mm	Bundle Ø 3.0 mm
	Segmented bundle	Segmented bundle	Segmented bundle	Segmented bundle	Segmented bundle
	IP67	IP67	IP67	IP67	IP50
	Page 577	Page 577	Page 577	Page 577	Page 577

Sensors

RFID

Machine Vision and Optical Identification

Human Machine Interfaces

Systems

Safety

Industrial Networking

Power Supply

Connectivity

Accessories



	BF0004Y BFO 18V-XAD-SMG-30-0,5	BF0004Z BFO 18V-XAD-SMG-30-1	BF0005Y BFO D22-LD-EAK-10-20	
Version	Ø 6, 90° optics	Ø 6, 90° optics	4.4x2.2 Duplex cable	
Use	For fiber optic base units BFB	For fiber optic base units BFB	For fiber optic base units BFB	
Reference base unit	BFB M18M-011-P-S4	BFB M18M-011-P-S4	BFB 75K-001-..	
Fiber type material	Glass	Glass	PMMA	
Cable length L	0.50 m	1.00 m	20.00 m	
Material jacket	Silicone, on stainless steel	Silicone, on stainless steel	PE	
Range	20 mm	20 mm	120 mm For L = 2 m	
Ambient temperature	-40...150 °C	-40...150 °C	-40...85 °C	
Material	Brass blackened	Brass blackened	—	
Active surface, fibers	Bundle Ø 3.0 mm	Bundle Ø 3.0 mm	Ø 1.0 mm (2x)	
Active surface, fiber arrangement	Segmented bundle	Segmented bundle	Adjacent to one another	
Protection degree	IP67	IP67	IP65	
Productview	Page 577	Page 577	Page 577	



	BF0000C BFO N22-LA-FB-EAK-05-01	BF0005R BFO D22-LA-RB-EAK-10-02	BF0005M BFO D22-LA-KB-EAK-10-02	BF0005U BFO D22-LAP-KB-EAK-15-02	BF0005T BFO D22-LAH-KB-EAK-10-02
	M2, standard	M3, standard	M4, standard	M4, standard	M4, standard, flexible cable
	For fiber optic base units BFB	For fiber optic base units BFB	For fiber optic base units BFB	For fiber optic base units BFB	For fiber optic base units BFB
	BFB 75K-001-..	BFB 75K-001-..	BFB 75K-001-..	BFB 75K-001-..	BFB 75K-001-..
	PMMA	PMMA	PMMA	PMMA	PMMA
	1.00 m	2.00 m	2.00 m	2.00 m	2.00 m
	PE	PE	PE	PE	PE
	140 mm	500 mm	500 mm	800 mm	400 mm
	-40...60 °C	-55...70 °C	-40...70 °C	-55...70 °C	-40...70 °C
	Brass nickel plated	Stainless steel (1.4305)	Stainless steel (1.4305)	Stainless steel (1.4305)	Stainless steel (1.4305)
	Ø 0.5 mm	Ø 1.0 mm	Ø 1.0 mm	Ø 1.5 mm	Ø 1.0 mm
	Single fiber	Single fiber	Single fiber	Single fiber	Single fiber
	IP65	IP65	IP65	IP65	IP65
	Page 577	Page 578	Page 578	Page 578	Page 578

Sensors

RFID

Machine Vision and Optical Identification

Human Machine Interfaces

Systems

Safety

Industrial Networking

Power Supply

Connectivity

Accessories



	BF0005W BFO D22-LAT-KB-EAK-10-02	BF0005N BFO D22-LA-NB-EAK-10-02	BF00002 BFO D22-LA-TB-EAK-10-02	
Version	M4, standard, high temp.	M4, bendable tip	M4, bendable tip	
Use	For fiber optic base units BFB	For fiber optic base units BFB	For fiber optic base units BFB	
Reference base unit	BFB 75K-001-..	BFB 75K-001-..	BFB 75K-001-..	
Fiber type material	PC	PMMA	PMMA	
Cable length L	2.00 m	2.00 m	2.00 m	
Material jacket	PE, cross-linked	PE	PE	
Range	600 mm	500 mm	450 mm	
Ambient temperature	-55...115 °C	-55...70 °C	-40...60 °C	
Material	Stainless steel (1.4305)	Stainless steel (1.4301) nickel plated Brass	Stainless steel	
Active surface, fibers	Ø 1.0 mm	Ø 1.0 mm	Ø 1.0 mm	
Active surface, fiber arrangement	Single fiber	Single fiber	Single fiber	
Protection degree	IP65	IP65	IP65	
Productview	Page 578	Page 578	Page 578	



	BF00051 BFO D10-LA-CB-EAK-05-02	BF000AY BFO D22-LAT-YB-EAK-10-0,5	BF00057 BFO D13-LA-WB-EAK-05-02	BF0005P BFO D22-LA-QB-PAK-05-02	BF000H6 BFO D22-LAH-JD-EAK-10-02
	Ø 2, standard	Ø 3, 90° optics, high temperature	Ø 3, thin point, 90° optics	Ø 3, thin point, 90° optics	Ø 3, thin point, 90° optics
	For fiber optic base units BFB	For fiber optic base units BFB	For fiber optic base units BFB	For fiber optic base units BFB	For fiber optic base units BFB
	BFB 75K-001-..	BFB 75K-001-..	BFB 75K-001-..	BFB 75K-001-..	BFB 75K-001-..
	PMMA	PC	PMMA	PMMA	PMMA
	2.00 m	0.50 m	2.00 m	2.00 m	2.00 m
	PE	PE, cross-linked	PE	PVC	PE
	130 mm	600 mm	75 mm	120 mm	300 mm
	-55...70 °C	-55...115 °C	-40...70 °C	-40...70 °C	-40...70 °C
	Stainless steel (1.4305)	Stainless steel (1.4305)	Stainless steel	Stainless steel	Brass nickel plated
	Ø 0.5 mm	Ø 1.0 mm	Ø 1.0 mm	Ø 1.0 mm	Ø 1.0 mm
	Single fiber	Single fiber	Single fiber	Single fiber	Single fiber
	IP65	IP65	IP65	IP65	IP65
	Page 578	Page 579	Page 579	Page 579	Page 579



	BF00056 BFO D13-LA-QB-EAK-05-02	BF000AW BFO D22-LAH-BK-EAK-10-02	BF000C8 BFO D25 LA-HD-EAK-465-02	
Version	Ø 3, thin point, 90° optics	M4, 90° conn., flex. cable	0.25x46.5, 90°-light grid	
Use	For fiber optic base units BFB	For fiber optic base units BFB	For fiber optic base units BFB	
Reference base unit	BFB 75K-001-..	BFB 75K-001-..	BFB 75K-001-..	
Fiber type material	PMMA	PMMA	PMMA	
Cable length L	2.00 m	2.00 m	2.00 m	
Material jacket	PE	PE	PE	
Range	110 mm	250 mm	550 mm	
Ambient temperature	-30...70 °C	-40...70 °C	-55...70 °C	
Material	Stainless steel	Brass nickel plated	ABS	
Active surface, fibers	Ø 0.5 mm	Ø 1.0 mm	Ø 0.25 mm (32x)	
Active surface, fiber arrangement	Single fiber	Single fiber	Row	
Protection degree	IP65	IP65	IP65	
Productview	Page 579	Page 579	Page 579	



	BF000C6 BFO D10-LAH-CK-EAK-05-02	BF000C7 BFO D10-LAH-DK-EAK-05-02	BF000AP BFO D22-LA-GD-EAK-52-02	BF00067 BFO D25-LA-CD-EAK-110-02	BF000C5 BFO D25-LA-ED-EAK-250-0,5
	0.5 mm, 90°	0.5 mm, 90°	5x10, light grid	6x19, light grid	0.25x24.8, 90°-light grid
	For fiber optic base units BFB	For fiber optic base units BFB	For fiber optic base units BFB	For fiber optic base units BFB	For fiber optic base units BFB
	BFB 75K-001-..	BFB 75K-001-..	BFB 75K-001-..	BFB 75K-001-..	BFB 75K-001-..
	PMMA	PMMA	PMMA	PMMA	PMMA
	2.00 m	2.00 m	2.00 m	2.00 m	0.50 m
	PE	PE	PE	PE	PE
	55 mm	50 mm	500 mm	600 mm	550 mm
	-40...70 °C	-40...70 °C	-55...70 °C	-55...70 °C	-55...70 °C
	Brass nickel plated	Brass nickel plated	Brass nickel plated	Brass nickel plated	ABS
	Ø 0.5 mm	Ø 0.5 mm	Ø 0.25 mm (16x)	Ø 0.25 mm (32x)	Ø 0.25 mm (32x)
	Single fiber	Single fiber	Row	Row	Row
	IP65	IP65	IP65	IP65	IP65
	Page 579	Page 580	Page 580	Page 580	Page 580

Sensors

RFID

Machine Vision and Optical Identification

Human Machine Interfaces

Systems

Safety

Industrial Networking

Power Supply

Connectivity

Accessories



	BF00068 BFO D25-LA-ED-EAK-250-02	BF0005K BFO D22-LA-BD-EAK-52-02	BF00059 BFO D13-LG-10-EAK-30-02	
Version	5.5x38, 90°-light grid	5x15, 90° light grid	Fork, coaxial optics	
Use	For fiber optic base units BFB	For fiber optic base units BFB	For fiber optic base units BFB	
Reference base unit	BFB 75K-001-..	BFB 75K-001-..	BFB 75K-001-..	
Fiber type material	PMMA	PMMA	PMMA	
Cable length L	2.00 m	2.00 m	2.00 m	
Material jacket	PE	PE	PE	
Range	550 mm	400 mm	10 mm	
Ambient temperature	-55...70 °C	-55...70 °C	-55...70 °C	
Material	ABS	Brass nickel plated	Plastic	
Active surface, fibers	Ø 0.25 mm (32x)	Ø 0.25 mm (16x)	Ø 0.25 mm (2x)	
Active surface, fiber arrangement	Row	Row	opposing	
Protection degree	IP65	IP65	IP65	
Productview	Page 580	Page 580	Page 580	



	BF00058 BFO D13-LG-05-EAK-30-02	BF0005E BFO D13-XB-RB-EAK-10-02	BF00054 BFO D10-XA-RB-EAK-10-02	BF000C3 BFO D10-XA-VB-EAK-10-02	BF00052 BFO D10-XA-GB-EAK-10-02
	Fork, coaxial optics	M3, coaxial optics	M3, standard	M3, standard	M3, bendable tip
	For fiber optic base units BFB	For fiber optic base units BFB	For fiber optic base units BFB	For fiber optic base units BFB	For fiber optic base units BFB
	BFB 75K-001-..	BFB 75K-001-..	BFB 75K-001-..	BFB 75K-001-..	BFB 75K-001-..
	PMMA	PMMA	PMMA	PMMA	PMMA
	2.00 m	2.00 m	2.00 m	2.00 m	2.00 m
	PE	PE	PE	PE	PE
	5 mm	60 mm	50 mm	50 mm	50 mm
	-55...70 °C	-55...70 °C	-55...70 °C	-55...70 °C	-55...70 °C
	Plastic	Stainless steel (1.4305)	Stainless steel (1.4305)	Stainless steel (1.4301) nickel plated Brass	Stainless steel (1.4301) nickel plated Brass
	Ø 0.25 mm (2x)	Ø 0.5 mm, Ø 0.25 mm (10x)	Ø 0.5 mm (2x)	Ø 0.5 mm (2x)	Ø 0.5 mm (2x)
	opposing	Ring around individual fiber	Adjacent to one another	Adjacent to one another	Adjacent to one another
	IP65	IP65	IP65	IP65	IP65
	Page 580	Page 581	Page 581	Page 581	Page 581



	BF0005C BFO D13-XB-KB-EAK-10-02	BF00006 BFO D22-XB-UB-EAK-15-02	BF000C9 BFO D22-XB-UB-EAK-15-SA1-02	
Version	M4, coaxial optics	M4, coaxial optics	M4, coaxial optics	
Use	For fiber optic base units BFB	For fiber optic base units BFB	For fiber optic base units BFB	
Reference base unit	BFB 75K-001-..	BFB 75K-001-..	BFS 33M-GSS-..	
Fiber type material	PMMA	PMMA	PMMA	
Cable length L	2.00 m	2.00 m	2.00 m	
Material jacket	PE	PE	PE	
Range	60 mm	130 mm	130 mm	
Ambient temperature	-55...70 °C	-40...60 °C	-40...60 °C	
Material	Stainless steel (1.4305)	Brass nickel plated	Brass nickel plated	
Active surface, fibers	Ø 0.5 mm, Ø 0.25 mm (10x)	Ø 0.25 mm (16x), Ø 1.0 mm	Ø 0.25 mm (16x), Ø 1.0 mm	
Active surface, fiber arrangement	Ring around individual fiber	Ring around individual fiber	Ring around individual fiber	
Protection degree	IP65	IP65	IP65	
Productview	Page 581	Page 581	Page 581	



	BF00055 BFO D10-XAH-KB-EAK-10-02	BF00005 BFO D22-XA-UB-EAK-20-02	BF00053 BFO D10-XA-HB-EAK-10-02	BF00066 BFO D22-XB-LB-EAK-15-02	BF000H4 BFO D22-XB-LB-EAK-15-SA1-0,5
	M4, standard	M4, standard	M4, bendable tip	M6, coaxial optics	M6, coaxial optics
	For fiber optic base units BFB	For fiber optic base units BFB	For fiber optic base units BFB	For fiber optic base units BFB	For fiber optic base units BFB
	BFB 75K-001-..	BFB 75K-001-..	BFB 75K-001-..	BFB 75K-001-..	BFS 33M-GSS-..
	PMMA	PMMA	PMMA	PMMA	PMMA
	2.00 m	2.00 m	2.00 m	2.00 m	0.50 m
	PE	PE	PE	PE	PE
	50 mm	150 mm	50 mm	120 mm	80 mm
	-40...70 °C	-55...70 °C	-55...70 °C	-55...70 °C	-55...70 °C
	Stainless steel (1.4305)	Stainless steel (1.4305)	Stainless steel (1.4301) nickel plated Brass	Stainless steel (1.4305)	Stainless steel (1.4305)
	Ø 0.5 mm (2x)	Ø 1.0 mm (2x)	Ø 0.5 mm (2x)	Ø 1.0 mm, Ø 0.25 mm (16x)	Ø 1.0 mm, Ø 0.25 mm (16x)
	Adjacent to one another	Adjacent to one another	Adjacent to one another	Ring around individual fiber	Ring around individual fiber
	IP65	IP65	IP65	IP65	IP65
	Page 581	Page 582	Page 582	Page 582	Page 582



	BFO00FP BFO D22-XB-LB-EAK-15-SA1-01	BFO00C4 BFO D22-XB-LB-EAK-15-SA1-02	BFO00FN BFO D22-XB-LB-EAK-15-SA1-05	
Version	M6, coaxial optics	M6, coaxial optics	M6, coaxial optics	
Use	For fiber optic base units BFB	For fiber optic base units BFB	For fiber optic base units BFB	
Reference base unit	BFS 33M-GSS-..	BFS 33M-GSS-..	BFS 33M-GSS-..	
Fiber type material	PMMA	PMMA	PMMA	
Cable length L	1.00 m	2.00 m	5 m	
Material jacket	PE	PE	PE	
Range	80 mm	80 mm	80 mm	
Ambient temperature	-55...70 °C	-55...70 °C	-55...70 °C	
Material	Stainless steel (1.4305)	Stainless steel (1.4305)	Stainless steel (1.4305)	
Active surface, fibers	Ø 0.25 mm (16x), Ø 1.0 mm	Ø 1.0 mm, Ø 0.25 mm (16x)	Ø 0.25 mm (16x), Ø 1.0 mm	
Active surface, fiber arrangement	Ring around individual fiber	Ring around individual fiber	Ring around individual fiber	
Protection degree	IP65	IP65	IP65	
Productview	Page 582	Page 582	Page 582	



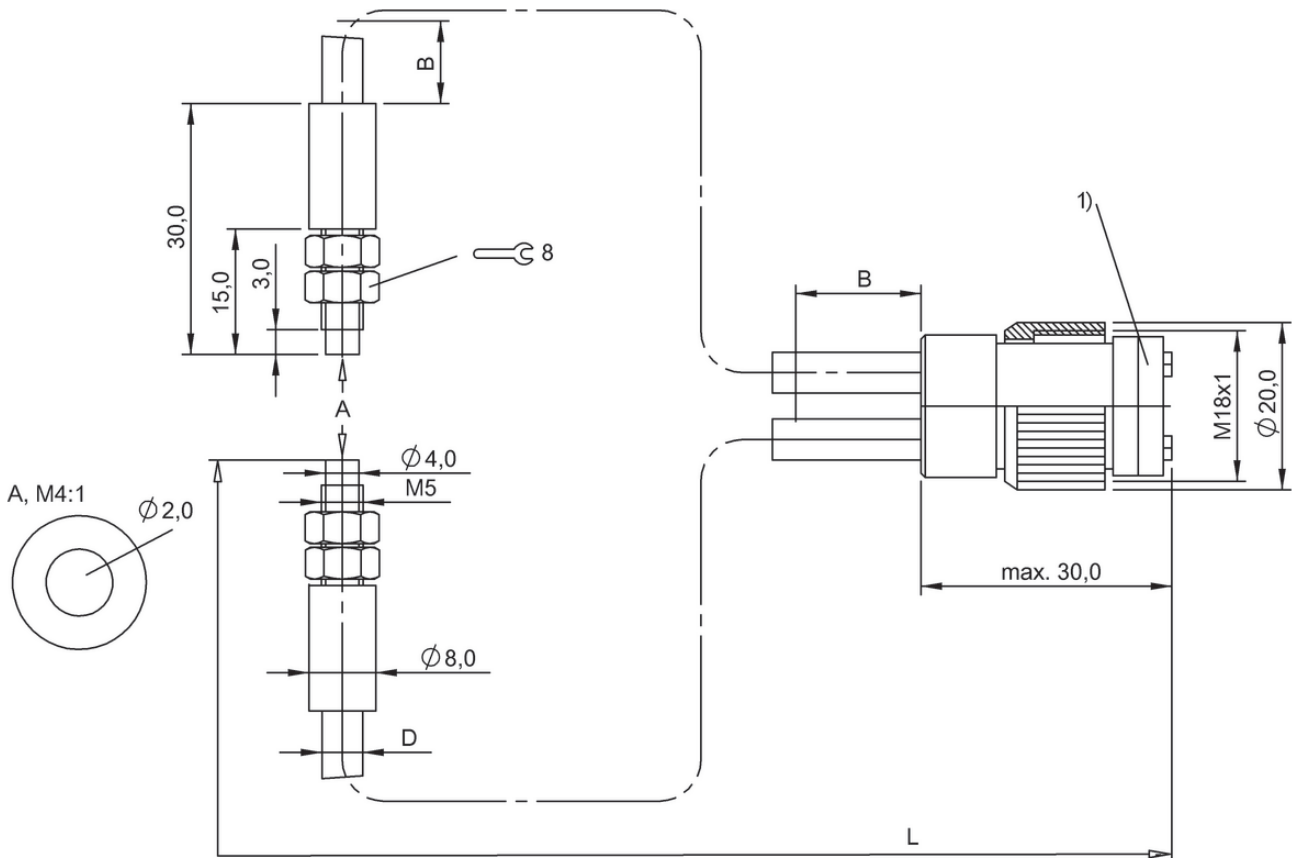
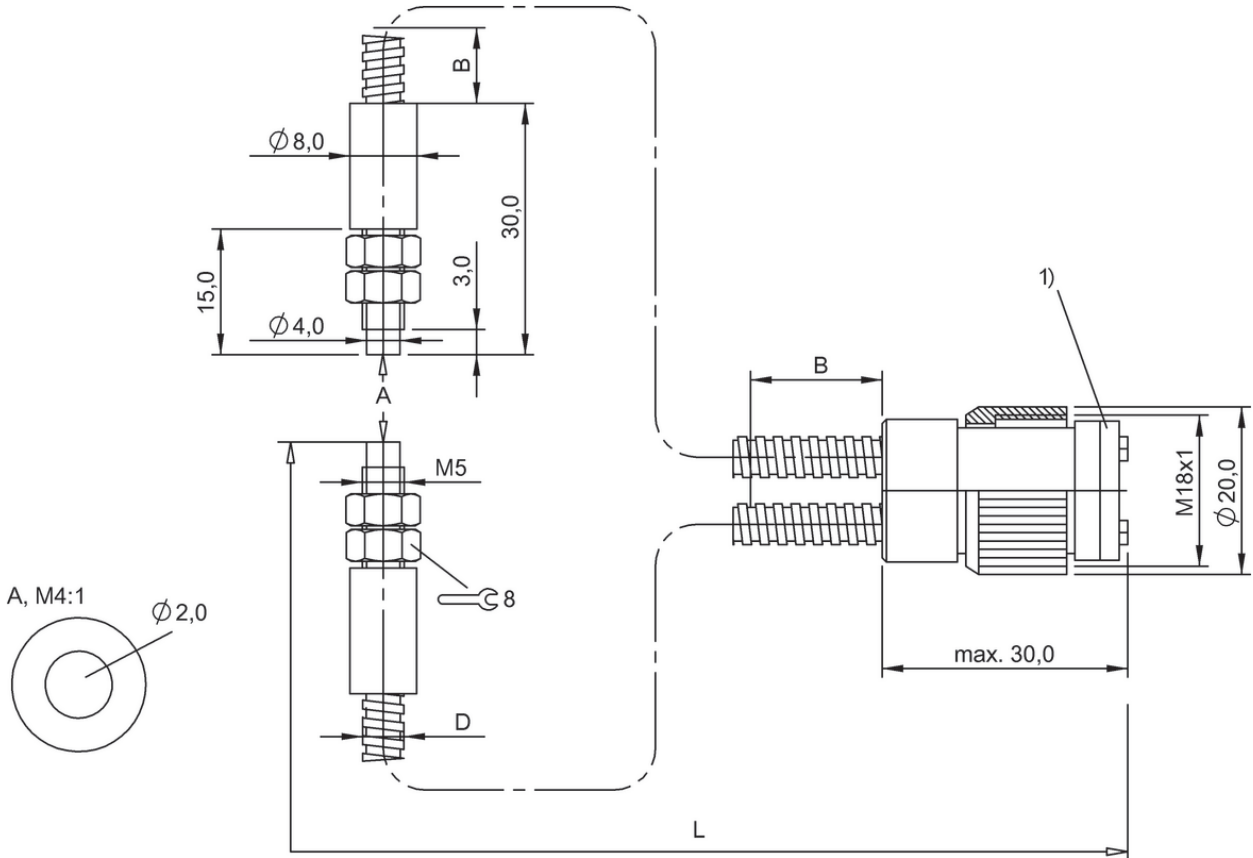
	BF00007 BFO D22-XBF-LB-EAK-15-02	BF000H5 BFO D22-XA-08B-EAK-26-02	BF00064 BFO D22-XAP-LB-EAK-30-02	BF00003 BFO D22-XA-DB-EAK-20-01	BF00063 BFO D22-XAH-LB-EAK-20-02
	M6, coax. optics, flex. cable	M6, standard	M6, standard	M6, standard	M6, standard, flexible cable
	For fiber optic base units BFB	For fiber optic base units BFB	For fiber optic base units BFB	For fiber optic base units BFB	For fiber optic base units BFB
	BFB 75K-001-..	BFB 75K-001-..	BFB 75K-001-..	BFB 75K-001-..	BFB 75K-001-..
	PMMA	PMMA	PMMA	PMMA	PMMA
	2.00 m	2.00 m	2.00 m	1.00 m	2.00 m
	PE	PE	PE	PE	PE
	110 mm	180 mm	180 mm	140 mm	120 mm
	-40...60 °C	-55...70 °C	-55...70 °C	-40...60 °C	-40...70 °C
	Brass nickel plated	Brass nickel plated	Stainless steel (1.4305)	Brass nickel plated	Stainless steel (1.4305)
	Ø 1.0 mm, Ø 0.25 mm (16x)	Ø 1.0 mm (2x)	Ø 1.5 mm (2x)	Ø 1.0 mm (2x)	Ø 1.0 mm (2x)
	Ring around individual fiber	Adjacent to one another	Adjacent to one another	Adjacent to one another	Adjacent to one another
	IP65	IP65	IP65	IP65	IP65
	Page 582	Page 582	Page 582	Page 582	Page 583

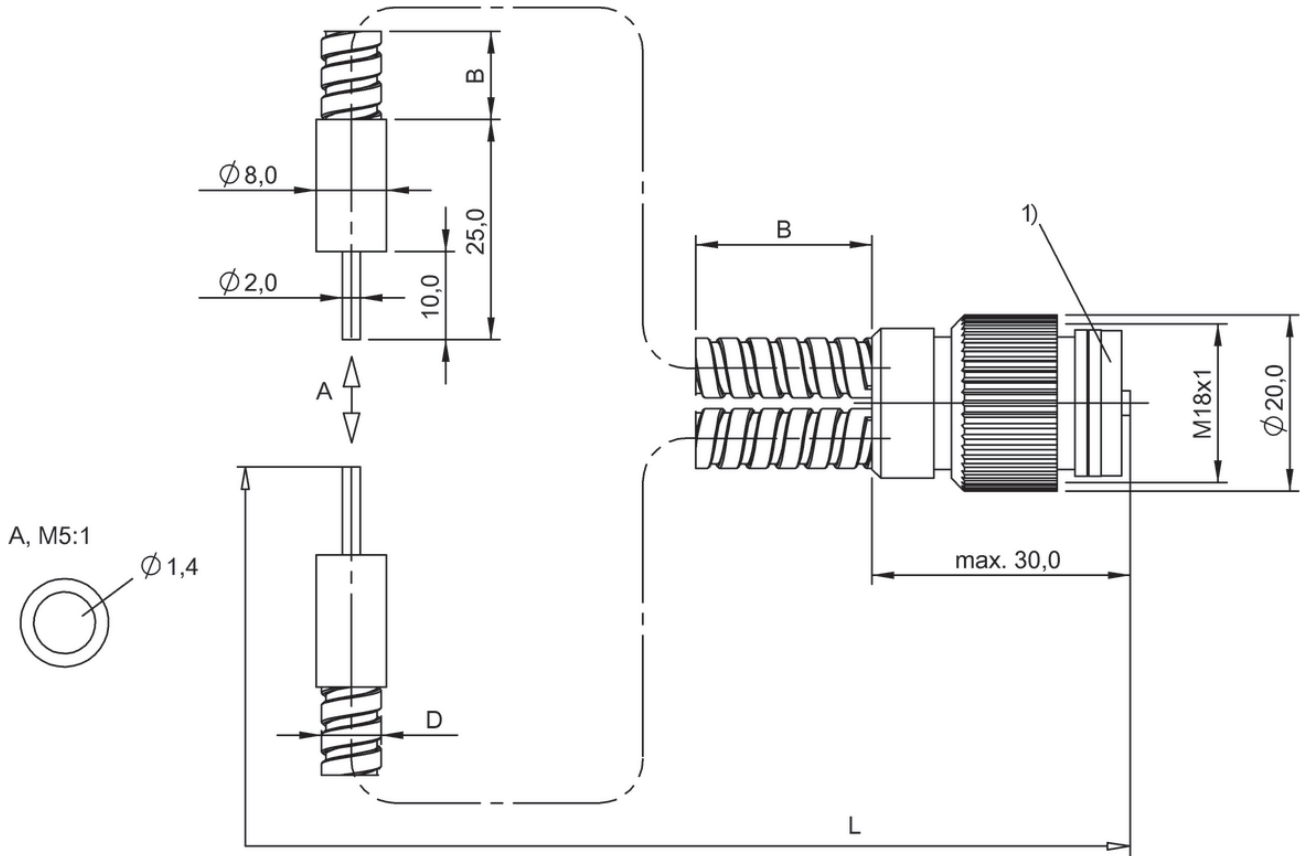


	BF00065 BFO D22-XAT-LB-EAK-20-02	BF00004 BFO D22-XA-SB-EAK-20-02	BF000AT BFO D13-XB-AB-EAK-10-01	
Version	M6, standard, high temp.	M6, thin tip, standard	Ø 2.5, coax optics	
Use	For fiber optic base units BFB	For fiber optic base units BFB	For fiber optic base units BFB	
Reference base unit	BFB 75K-001-..	BFB 75K-001-..	BFB 75K-001-..	
Fiber type material	PC	PMMA	PMMA	
Cable length L	2.00 m	2.00 m	1.00 m	
Material jacket	PE, cross-linked	PE	PE	
Range	130 mm	150 mm	60 mm	
Ambient temperature	-55...115 °C	-55...70 °C	-55...70 °C	
Material	Stainless steel (1.4305)	Stainless steel (1.4301) nickel plated Brass	Stainless steel (1.4305)	
Active surface, fibers	Ø 1.0 mm (2x)	Ø 1.0 mm (2x)	Ø 0.5 mm, Ø 0.25 mm (9x)	
Active surface, fiber arrangement	Adjacent to one another	Adjacent to one another	Ring around individual fiber	
Protection degree	IP65	IP65	IP65	
Productview	Page 583	Page 583	Page 583	



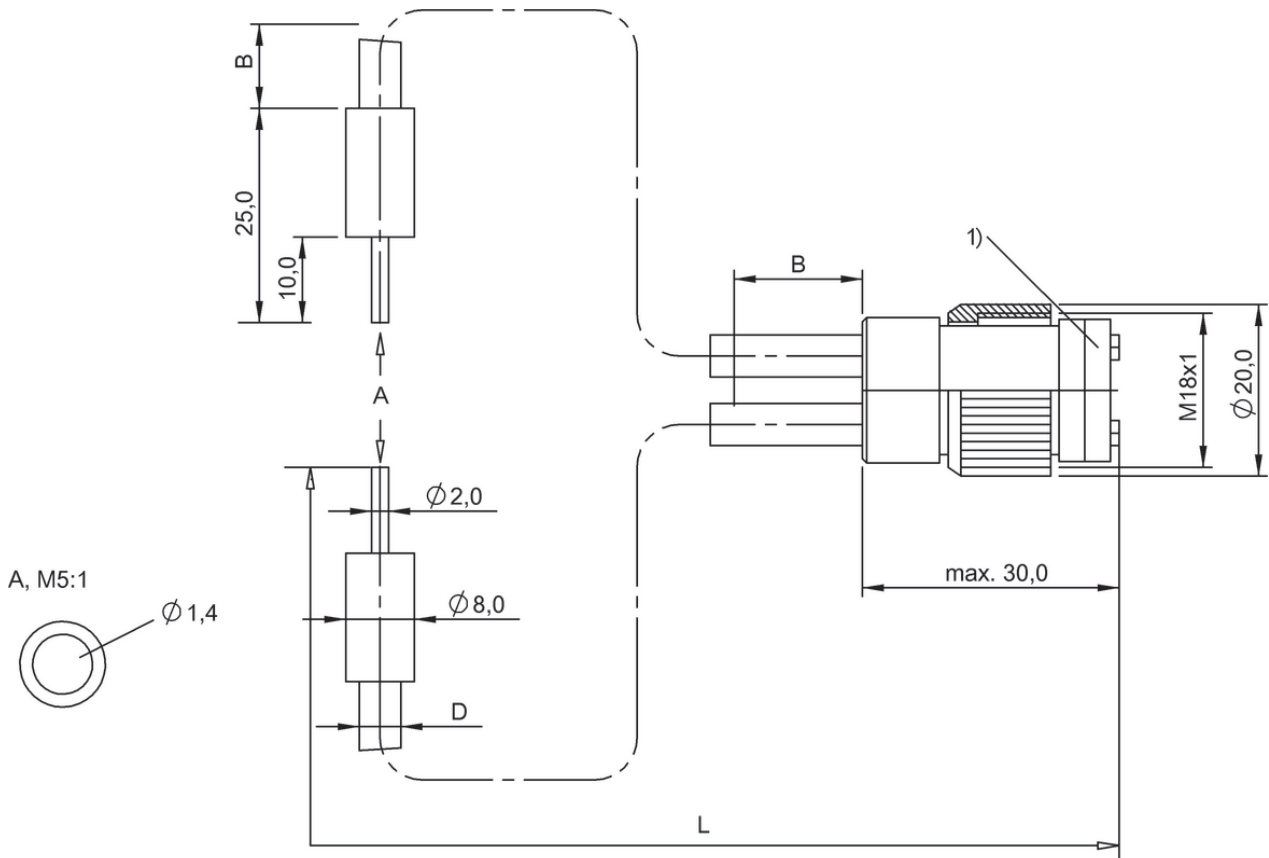
	BF0005A BFO D13-XA-JB-EAK-20-02	BF00062 BFO D22-XA-MB-PAK-10-02	BF0005Z BFO D22-XA-CD-EAK-110-02	BF000AR BFO D13-XV-AK-EAK-50-02	BF00060 BFO D22-XA-ED-EAK-250-02
	Ø 3, Standard	Ø 3, thin point, 90° optics	6x19, light grid	13x19.7, 90° optics	5.5x38, 90°-light grid
	For fiber optic base units BFB	For fiber optic base units BFB	For fiber optic base units BFB	For fiber optic base units BFB	For fiber optic base units BFB
	BFB 75K-001-..	BFB 75K-001-..	BFB 75K-001-..	BFB 75K-001-..	BFB 75K-001-..
	PMMA	PMMA	PMMA	PMMA	PMMA
	2.00 m	2.00 m	2.00 m	2.00 m	2.00 m
	PE	PVC	PE	PE	PE
	130 mm	35 mm	100 mm	6 mm	90 mm
	-55...70 °C	-40...70 °C	-55...70 °C	-55...70 °C	-55...70 °C
	Stainless steel (1.4305)	Stainless steel	Brass nickel plated	Plastic	ABS
	Ø 0.5 mm (2x)	Ø 0.5 mm (2x)	Ø 0.25 mm (32x)	Ø 0.5 mm (2x)	Ø 0.25 mm (32x)
	Adjacent to one another	Adjacent to one another	Row	Distance	Row
	IP65	IP65	IP65	IP65	IP65
	Page 583	Page 583	Page 583	Page 583	Page 584





1) Disc removable

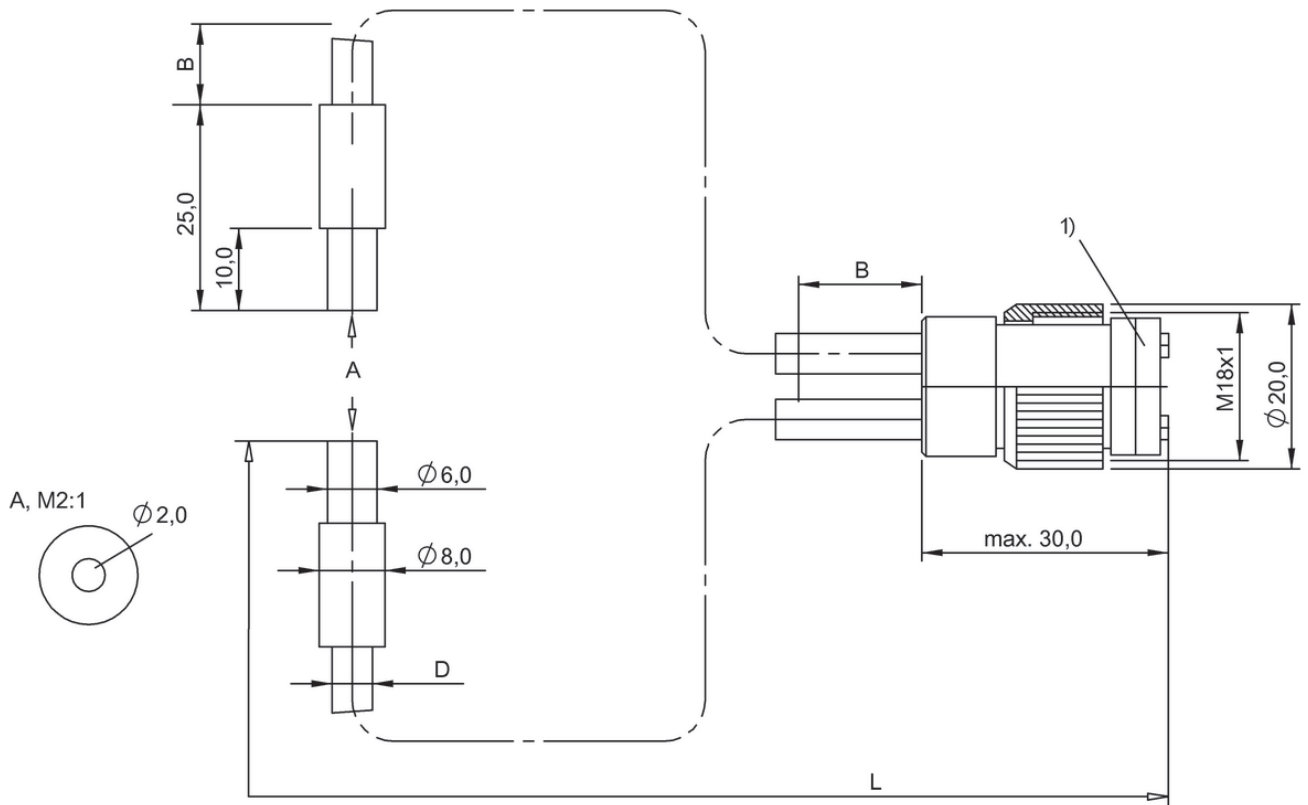
BF0001Z, BF00020



1) Disc removable

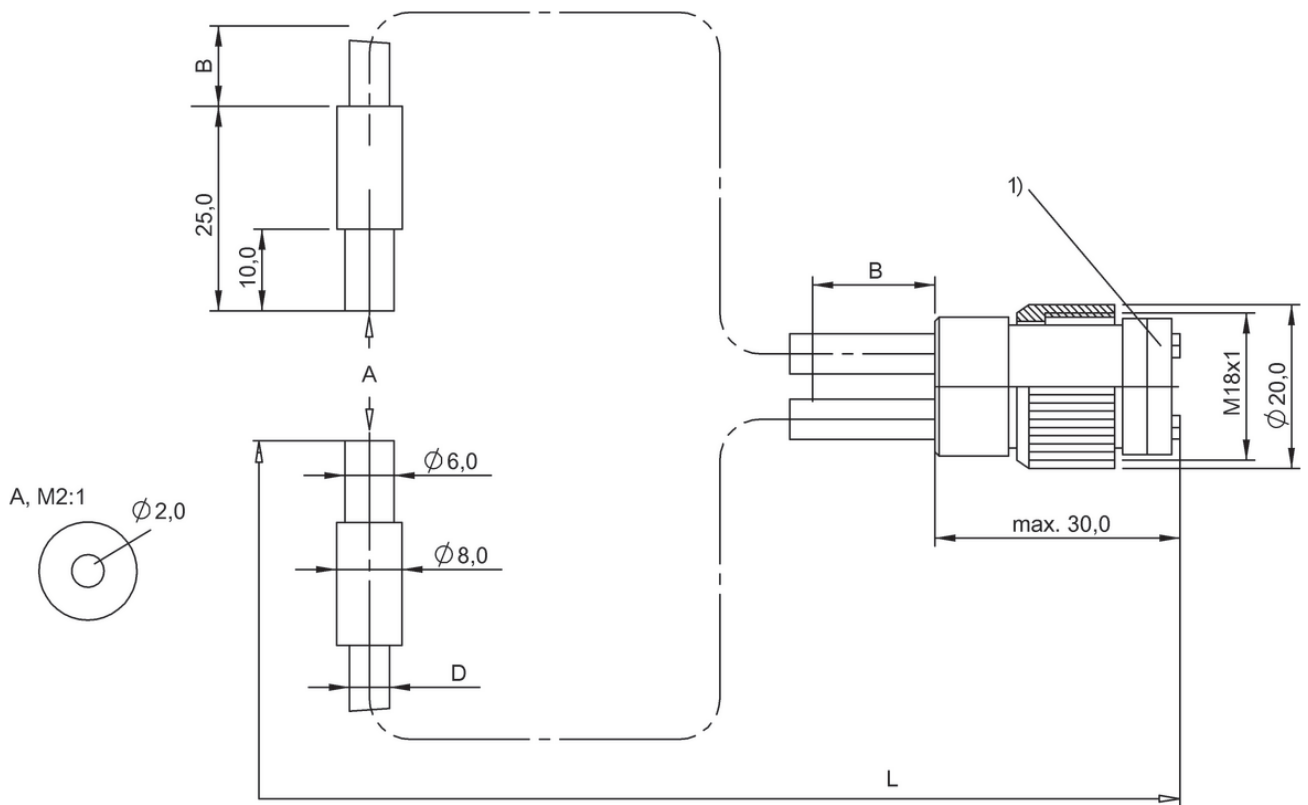
BF00023, BF00024

Do you need more details? Our Product Finder at www.balluff.com provides you with product-specific information, including technical drawings, data sheets, user guides and more for each individual product. All items are available for download.



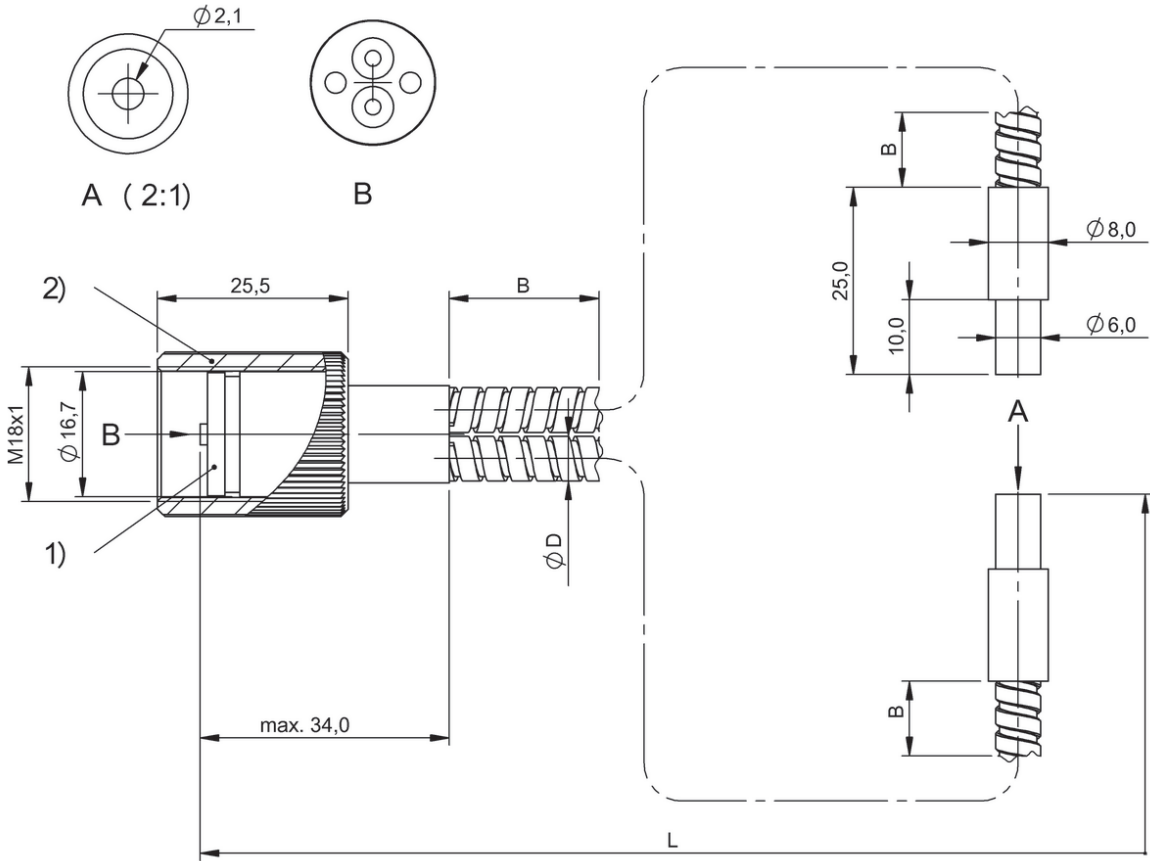
1) Disc removable

BF0000U, BF0000W



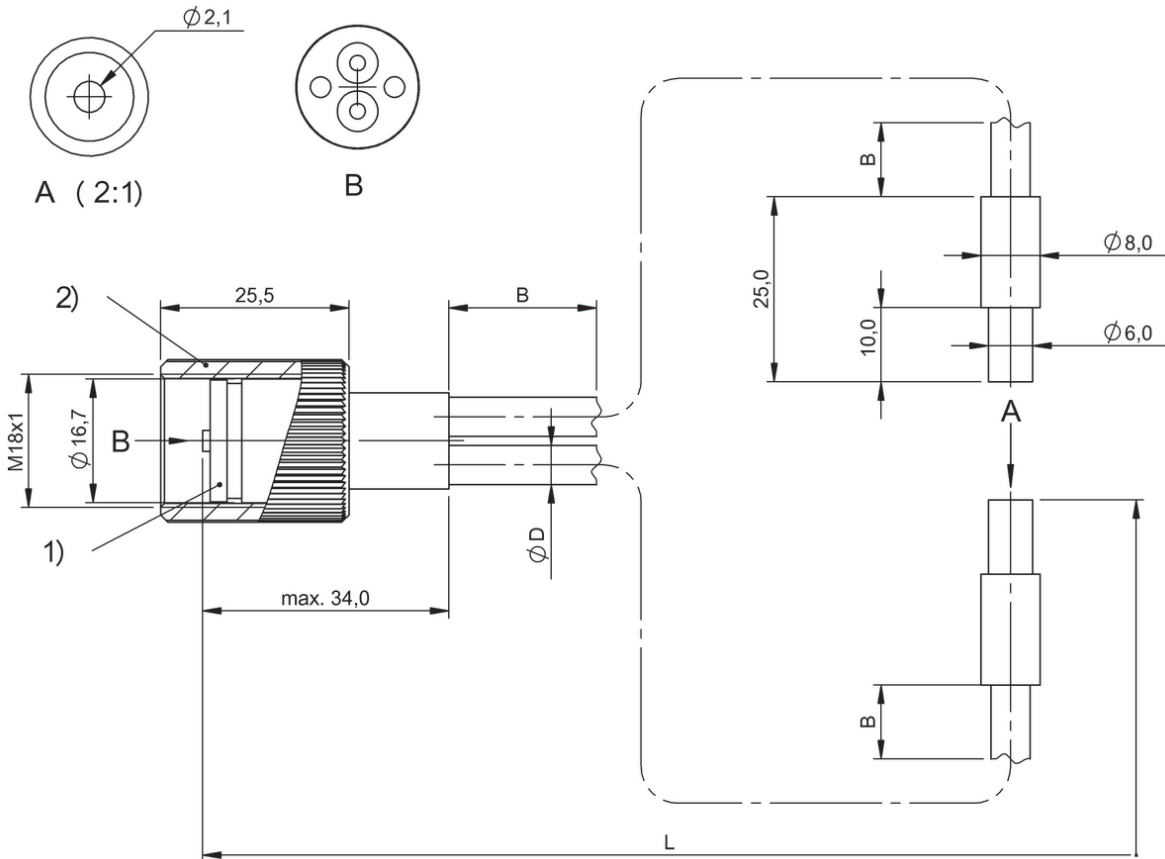
1) Disc removable

BF0000Z



1) Disc removable, 2) cap nut

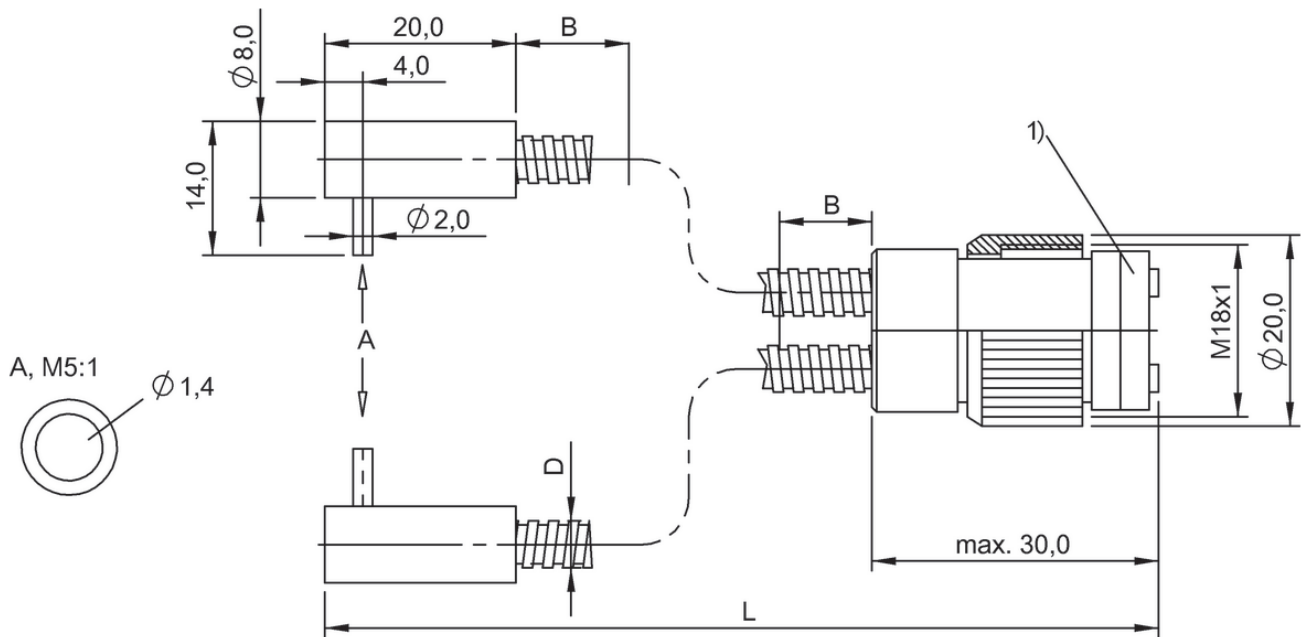
BF0003Y, BF0003Z



1) Disc removable, 2) cap nut

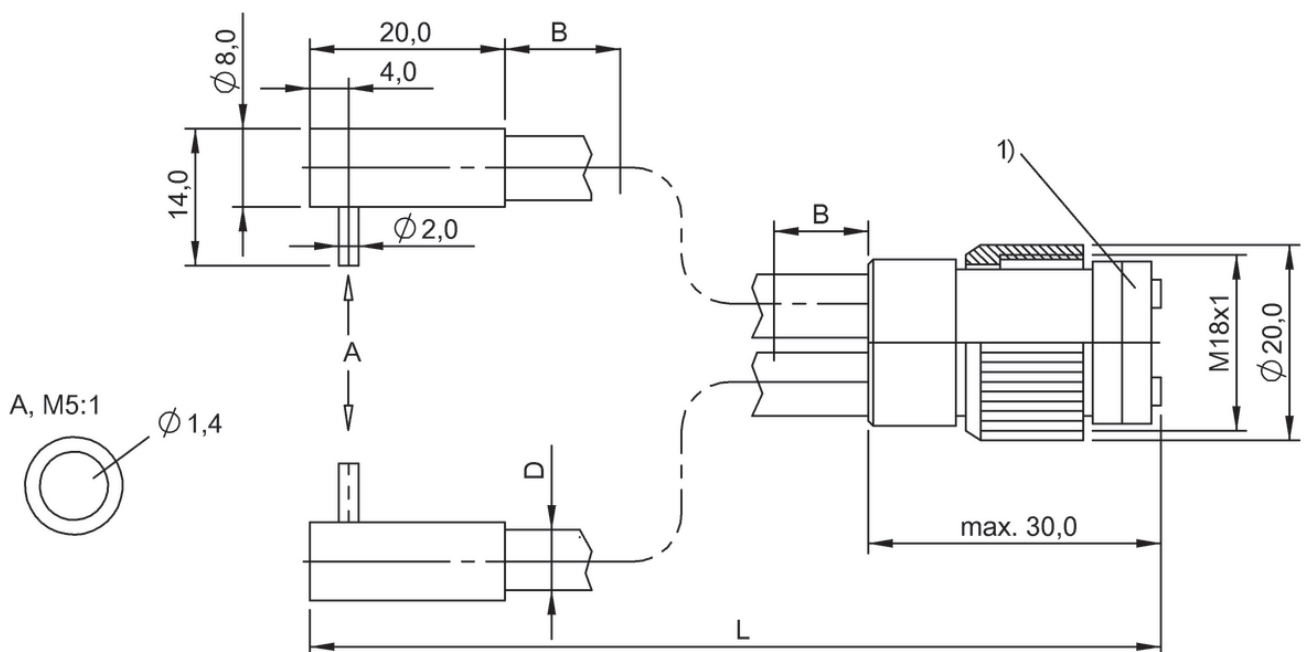
BF00042

Do you need more details? Our Product Finder at www.balluff.com provides you with product-specific information, including technical drawings, data sheets, user guides and more for each individual product. All items are available for download.



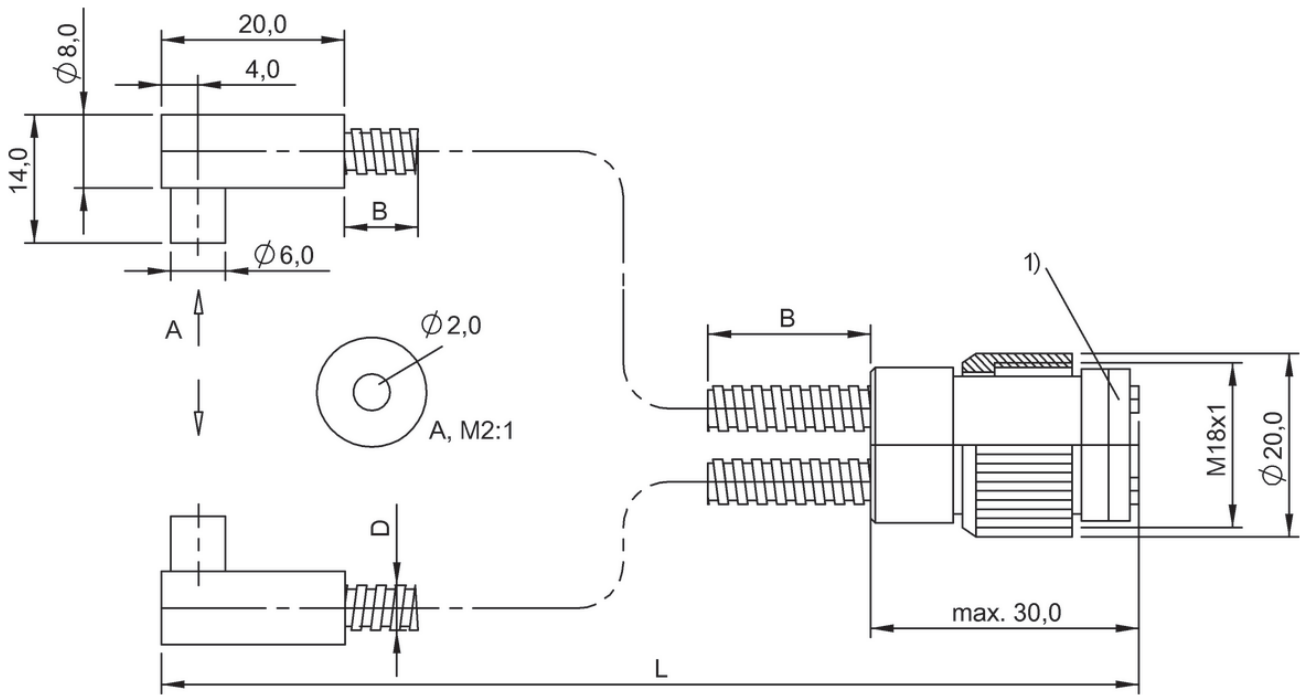
1) Disc removable

BF0001P, BF0001R



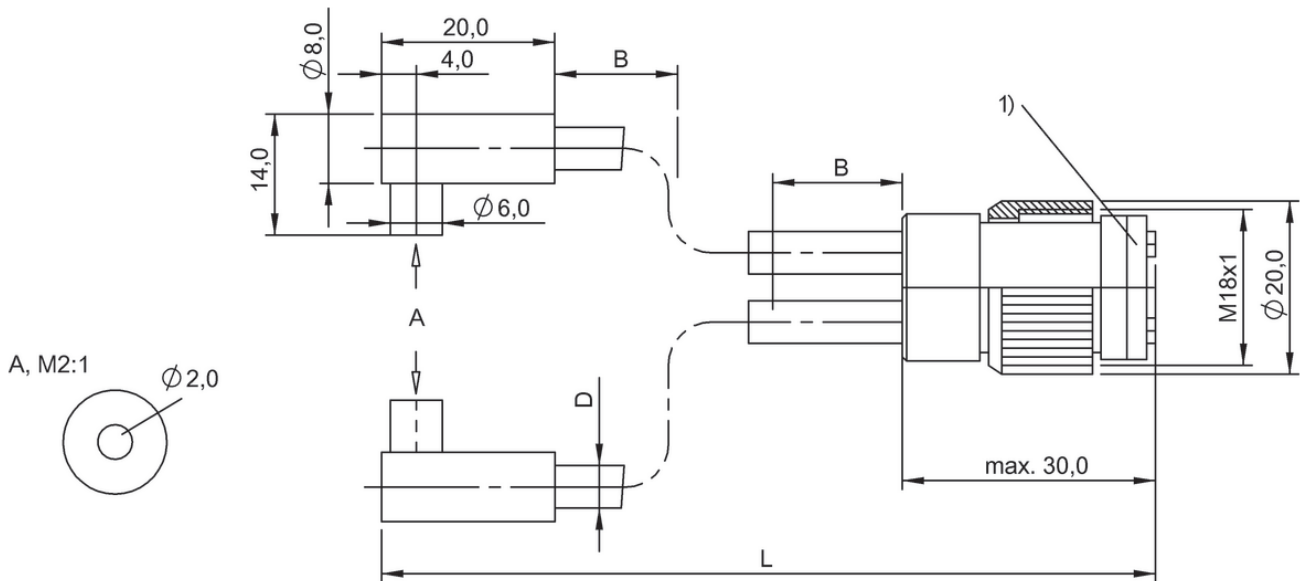
1) Disc removable

BF0001U, BF0001W



1) Disc removable

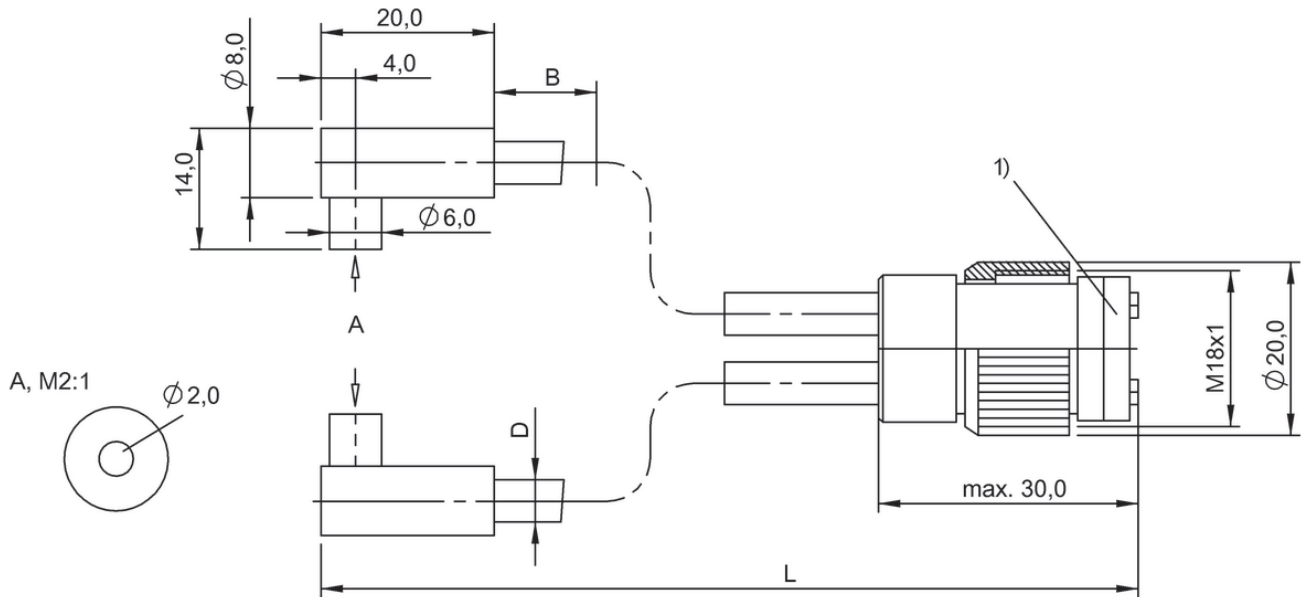
BF00013, BF00014



1) Disc removable

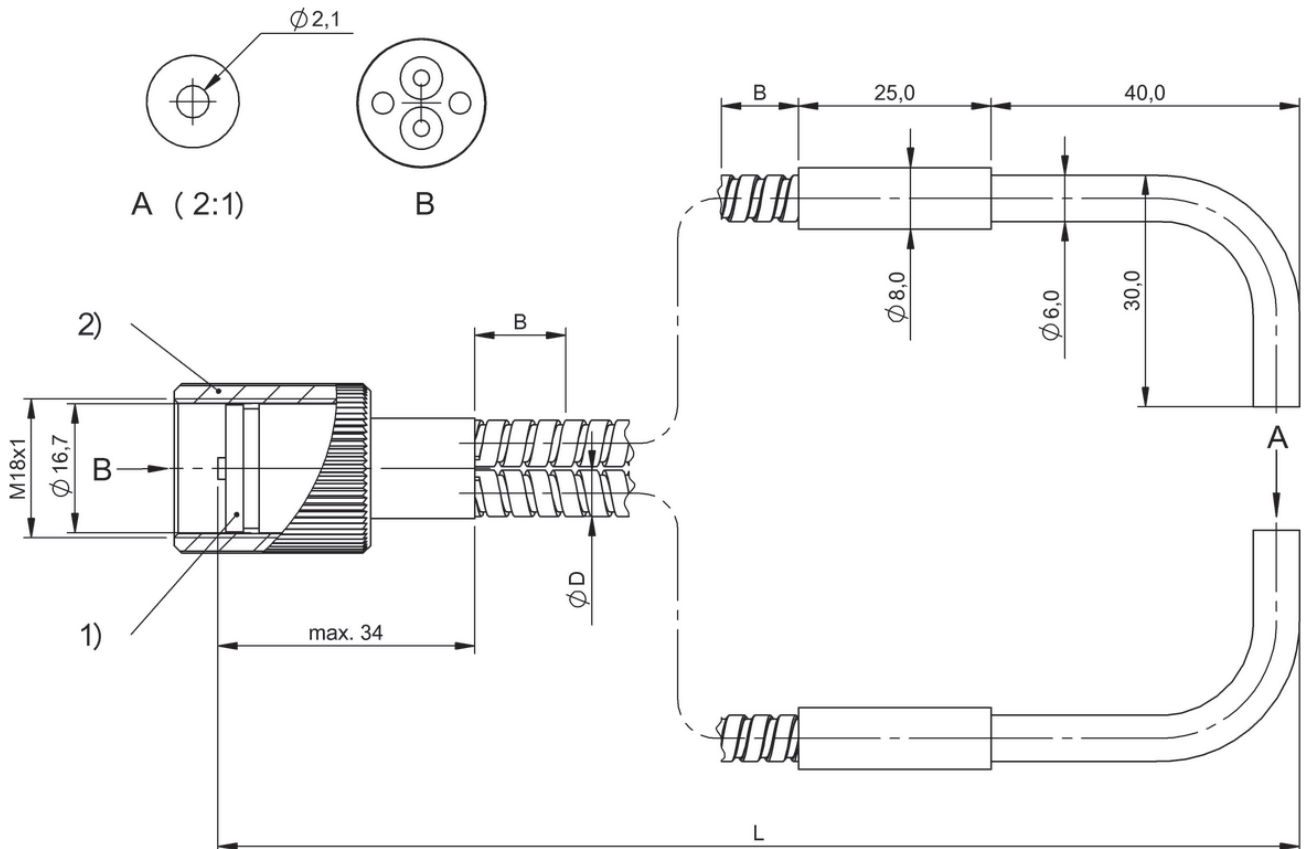
BF00019, BF0001A

Do you need more details? Our Product Finder at www.balluff.com provides you with product-specific information, including technical drawings, data sheets, user guides and more for each individual product. All items are available for download.



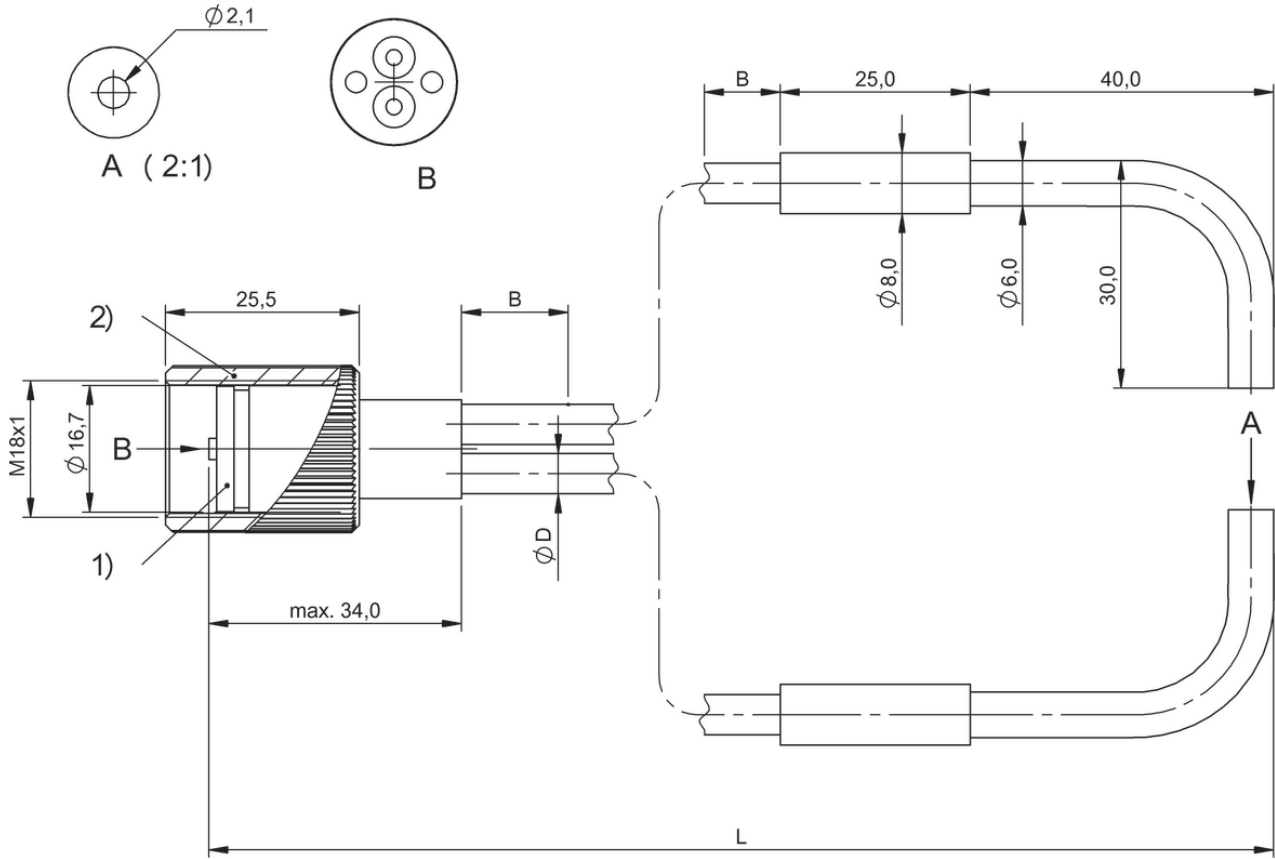
1) Disc removable

BF0001F, BF0001H



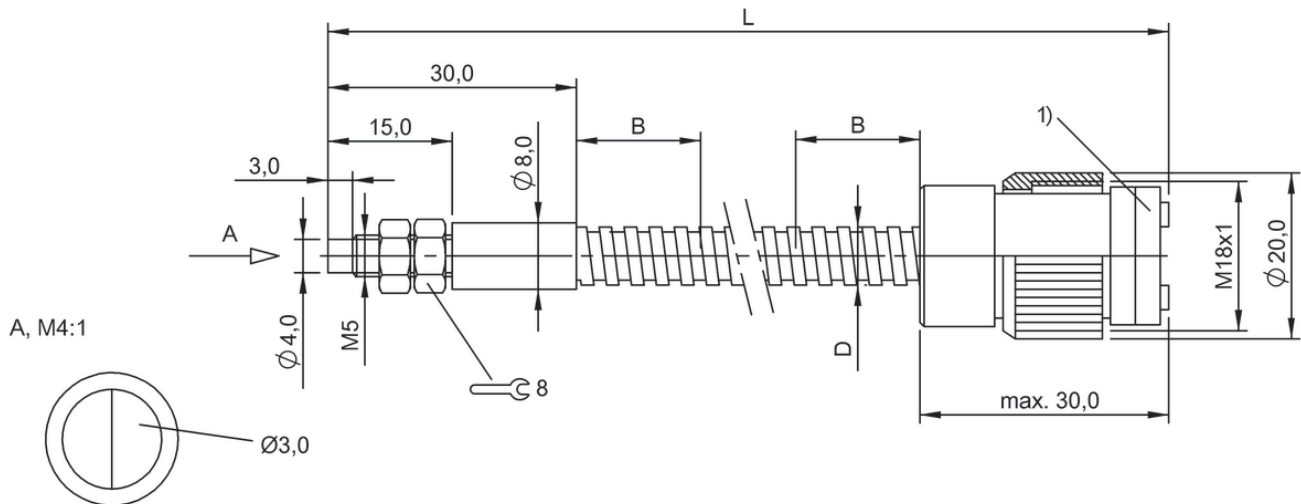
1) Disc removable, 2) cap nut

BF00047, BF00049, BF0004A



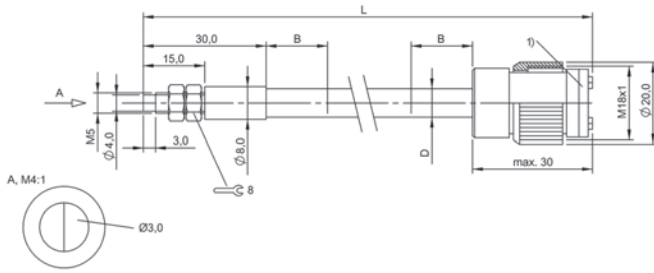
1) Disc removable, 2) cap nut

BF0004C, BF0004F



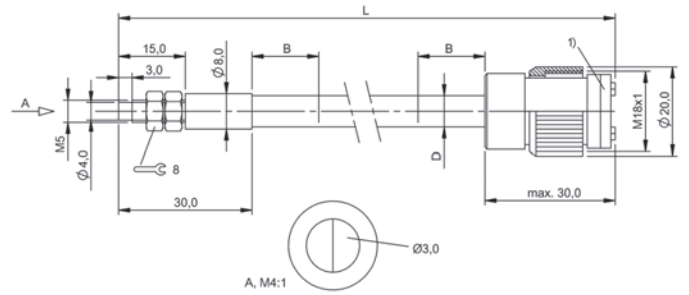
1) Disc removable

BF00026, BF00027, BF000H3



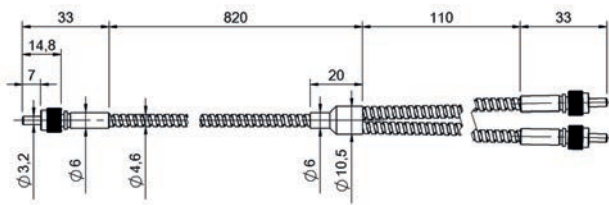
1) Disc removable

BF0002F, BF0002H

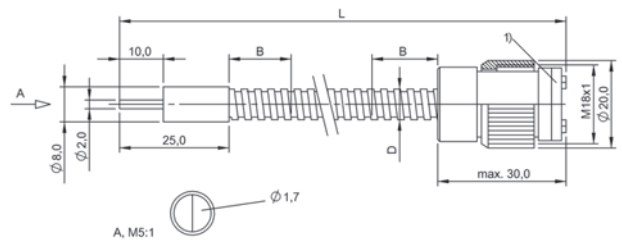


1) Disc removable

BF0002M, BF0002N

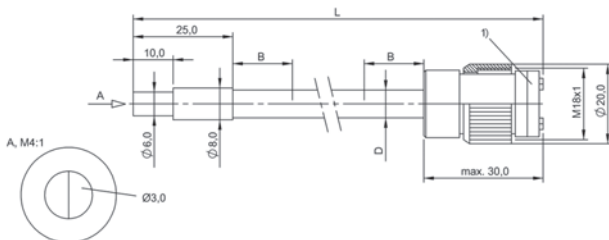


BF0000H8



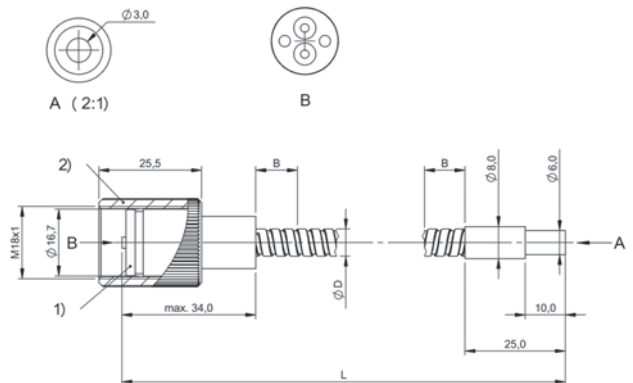
1) Disc removable

BF0003R, BF0003T



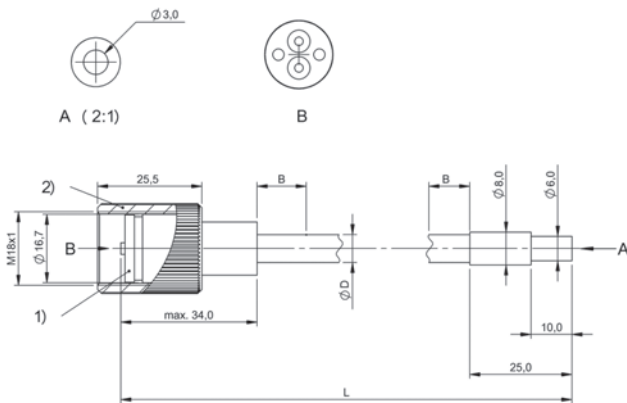
1) Disc removable

BF00002U, BF00002W



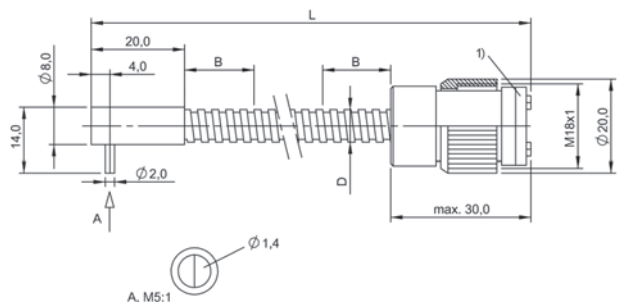
1) Disc removable, 2) cap nut

BF00004M



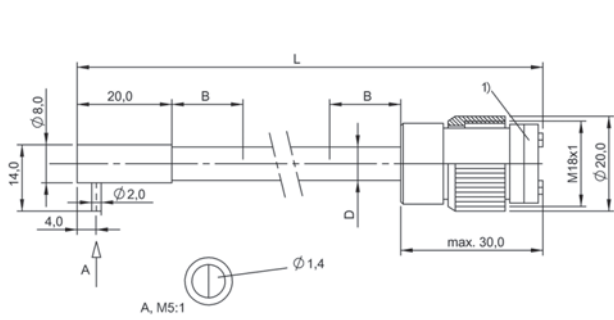
1) Disc removable, 2) cap nut

BF00004P, BF00004R



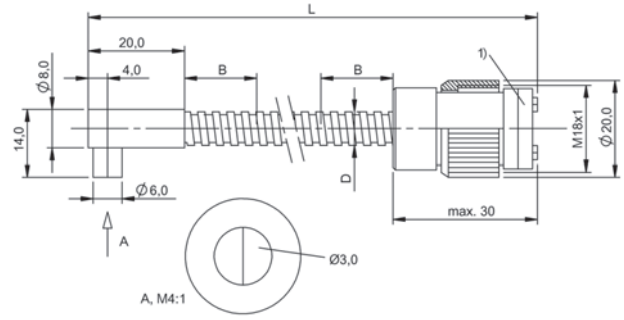
1) Disc removable

BF00003H, BF00003J



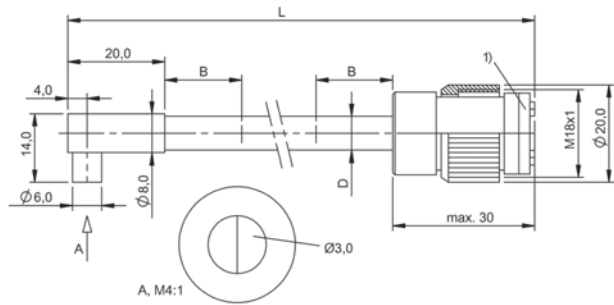
1) Disc removable

BF0003M, BF0003N



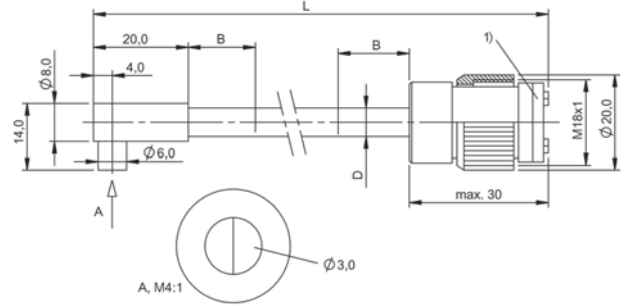
1) Disc removable

BF00031, BF00032



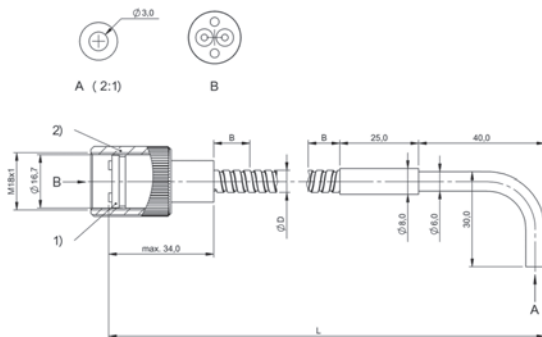
1) Disc removable

BF00037, BF00038



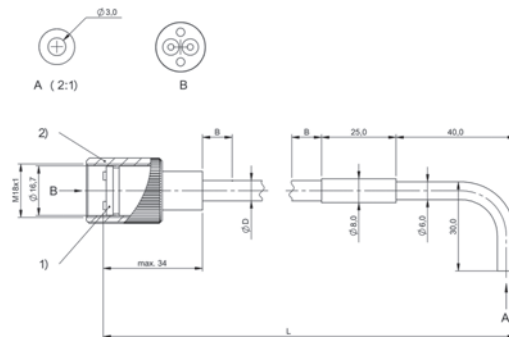
1) Disc removable

BF0003C, BF0003E



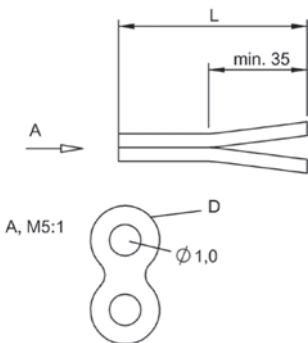
1) Disc removable, 2) cap nut

BF0004U

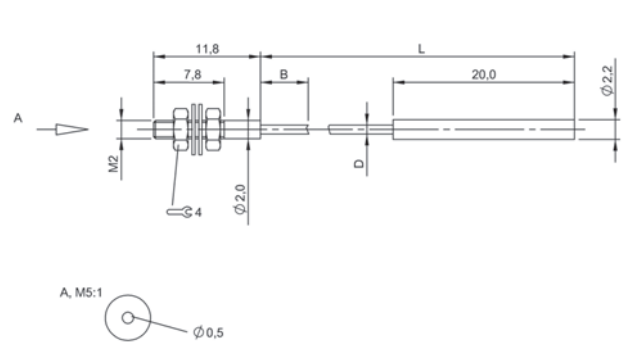


1) Disc removable, 2) cap nut

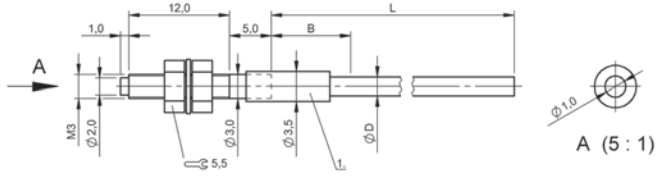
BF0004Y, BF0004Z



BF0005Y

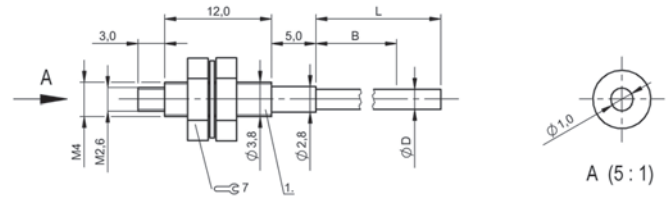


BF0000C



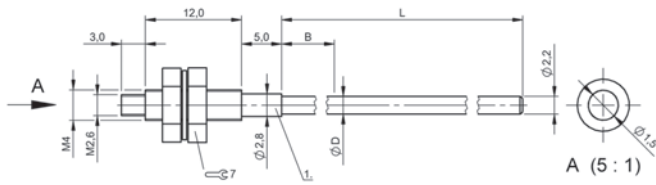
1) Protective tube

BF0005R



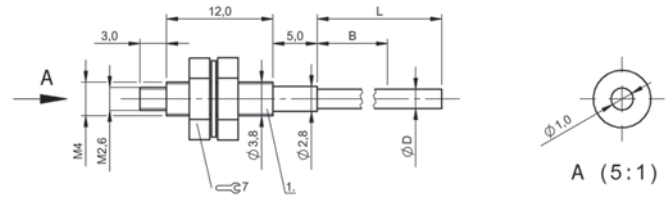
1) Protective tube

BF0005M



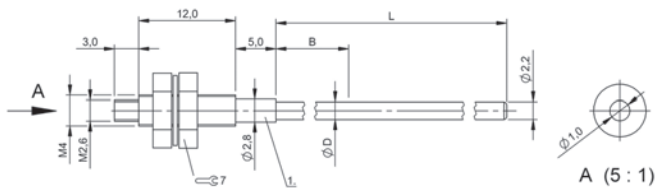
1) Protective tube

BF0005U



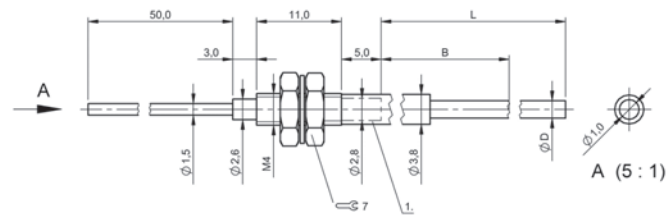
1) Protective tube

BF0005T



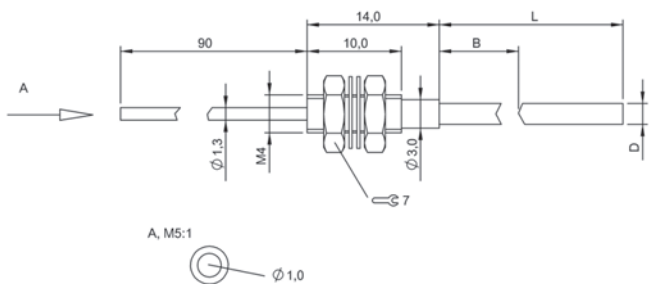
1) Protective tube

BF0005W

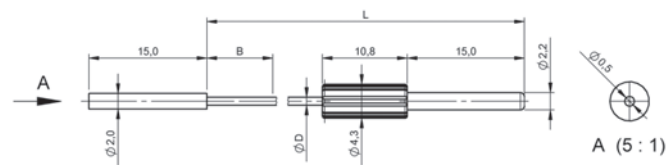


1) Protective tube

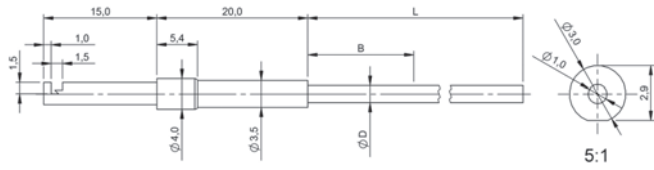
BF0005N



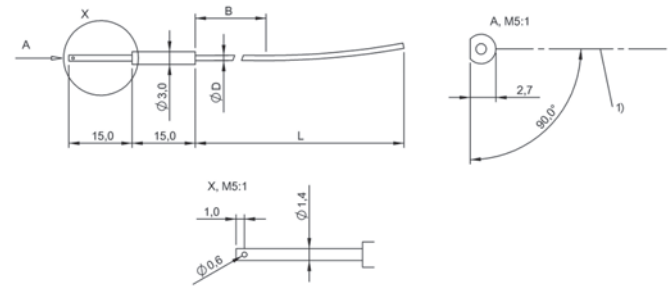
BF00002



BF00051

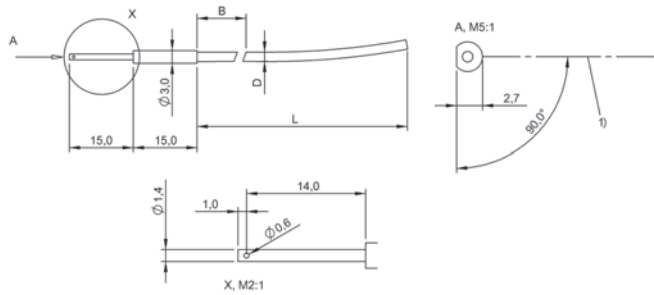


BF0004Y



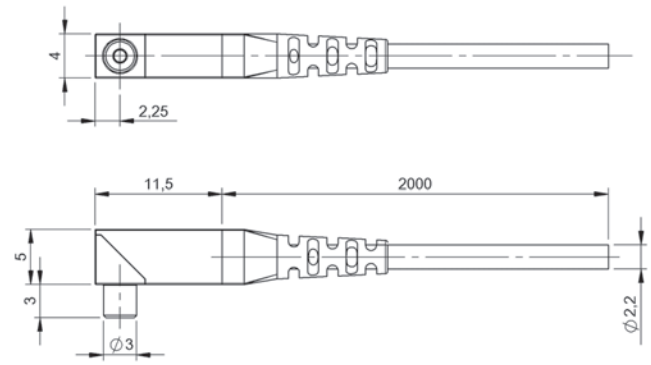
1) Optical axis

BF00057

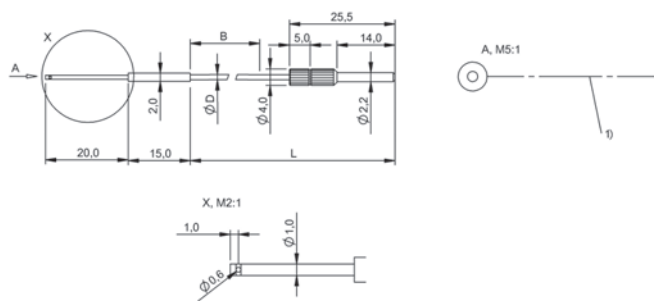


1) Optical axis

BF0005P

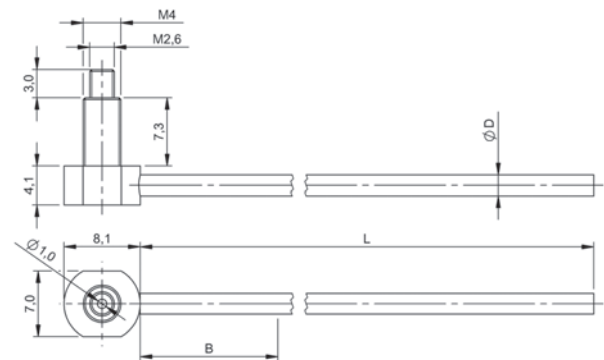


BF00057

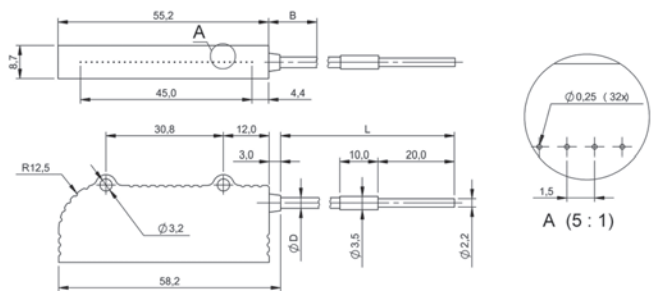


1) Optical axis

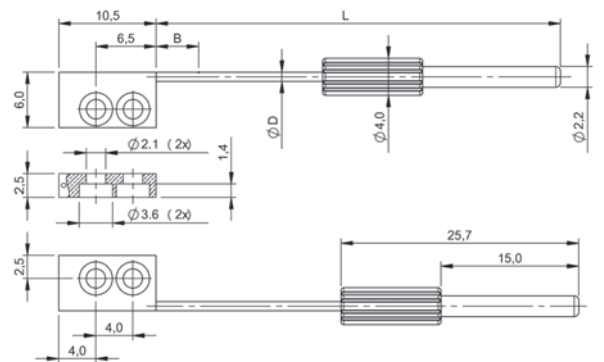
BF00056



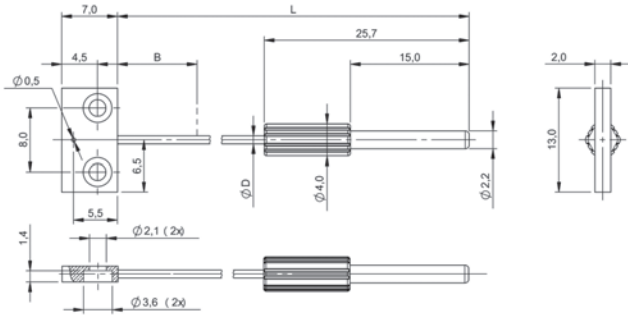
BF000H6



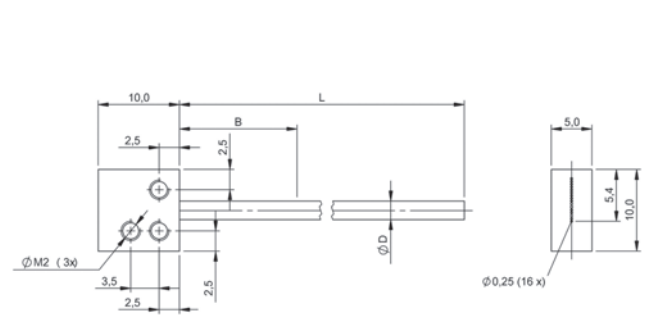
BF000C6



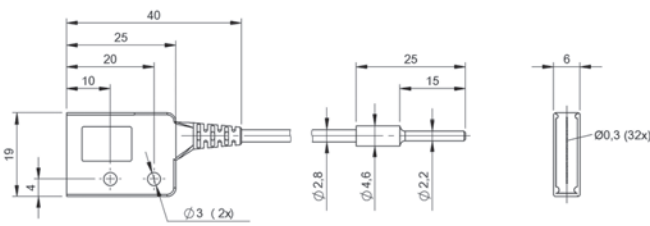
BF000AW



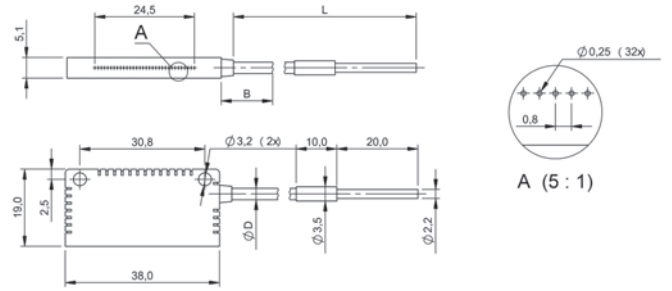
BF000C7



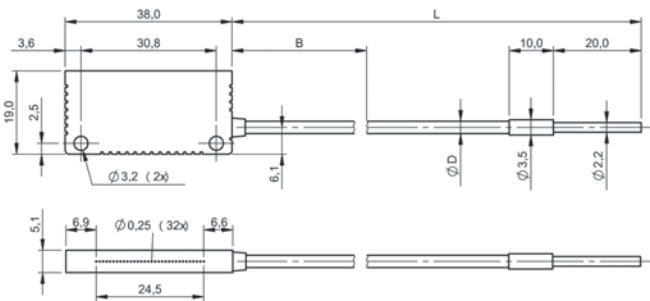
BF000AP



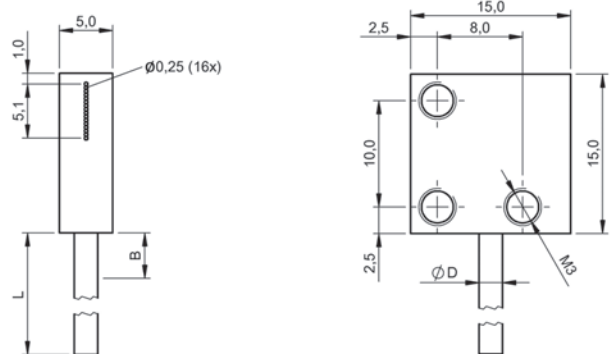
BF00067



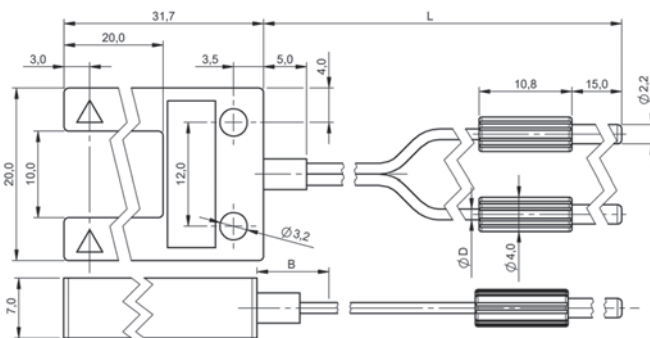
BF000C5



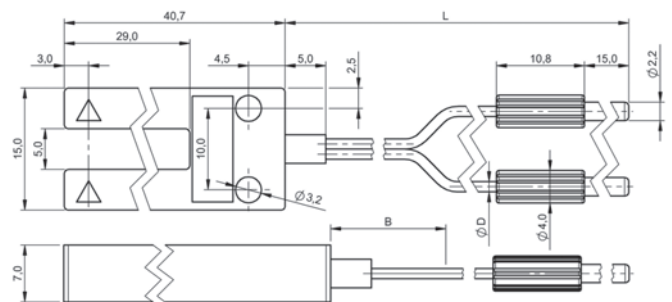
BF00068



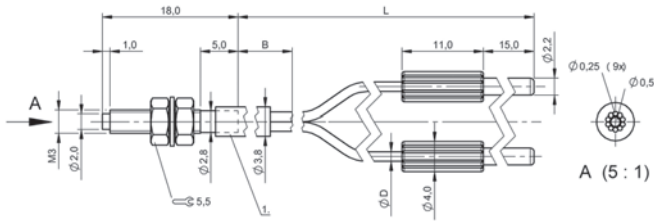
BF0005K



BF00059

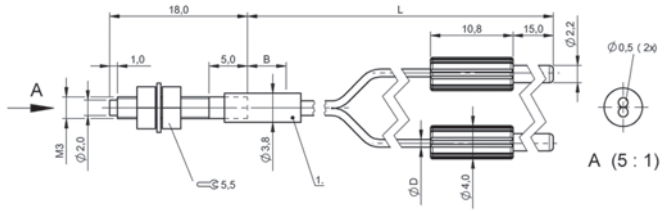


BF00058



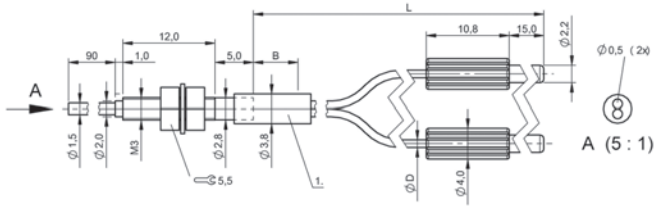
1) Protective tube

BF0005E



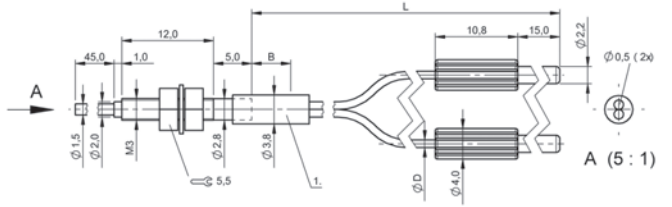
1) Protective tube

BF00054



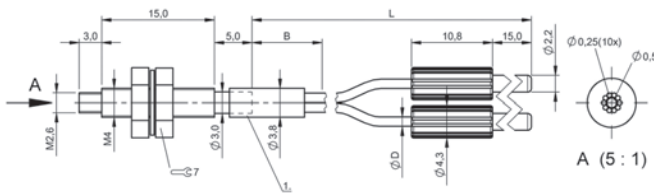
1) Protective tube

BF000C3



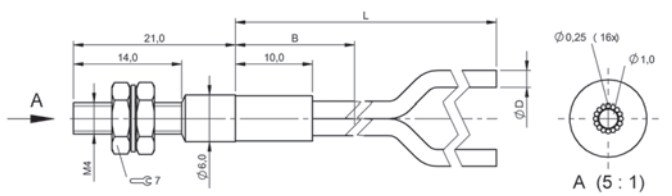
1) Protective tube

BF00052

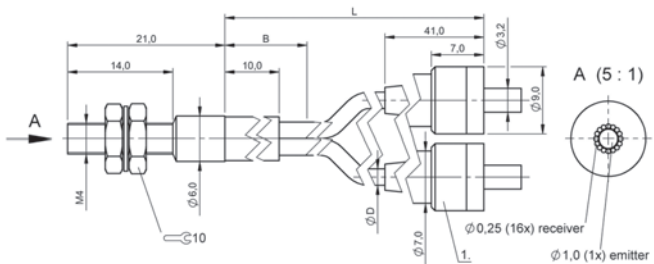


1) Protective tube

BF0005C

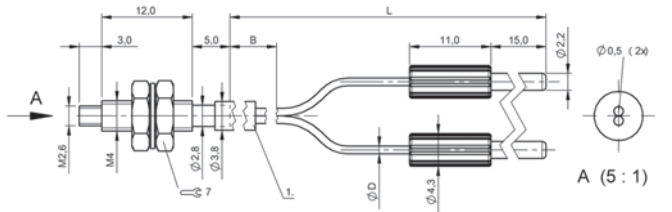


BF00006



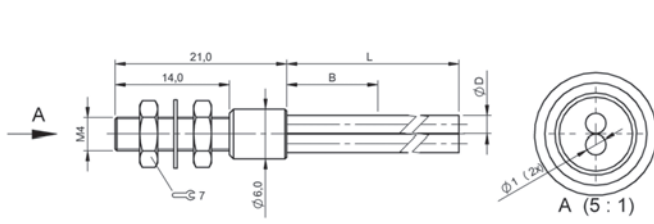
1) SMA 905

BF000C9

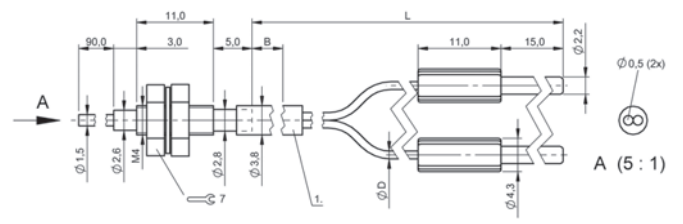


1) Protective tube

BF00055

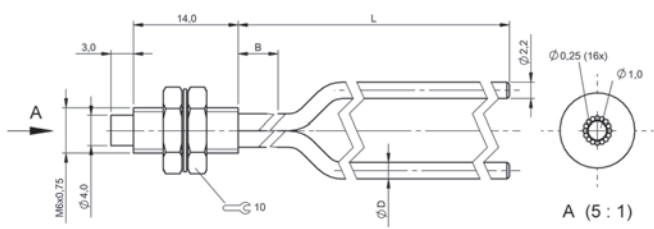


BF00005

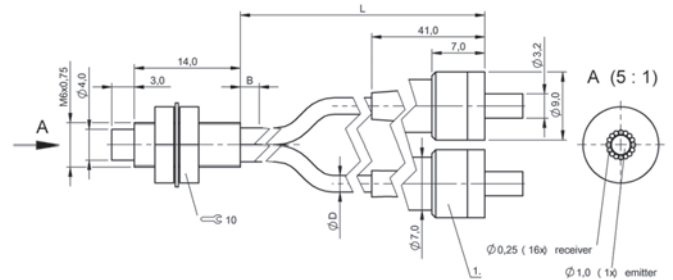


1) Protective tube

BF00053

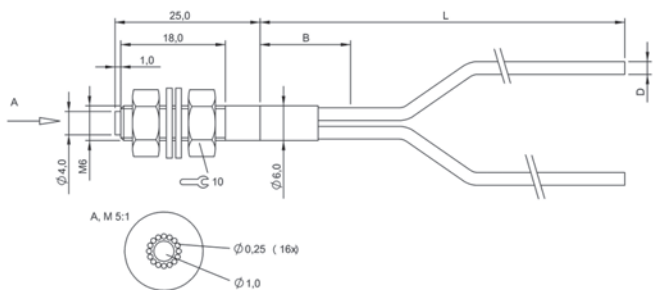


BF00066

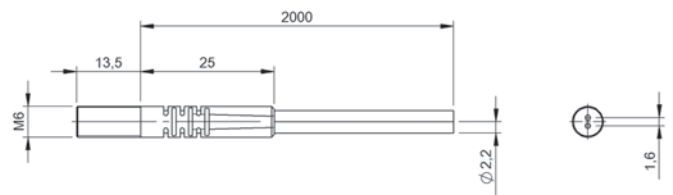


1) SMA 905

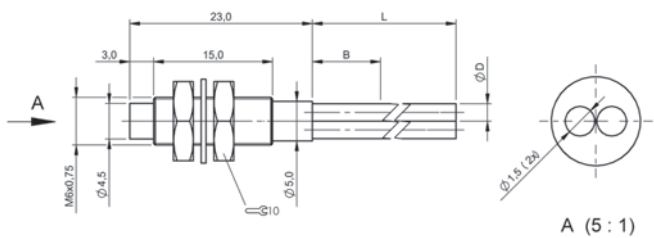
BF000H4, BF000FP, BF000C4, BF000FN



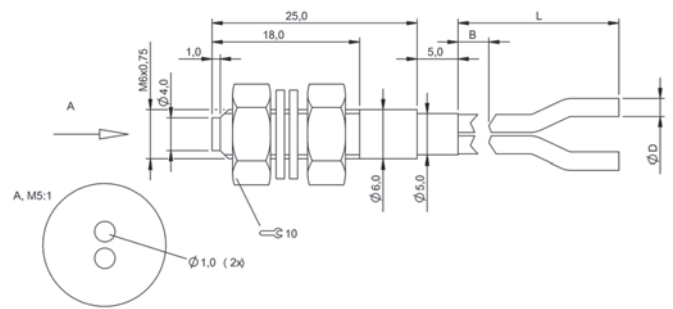
BF00007



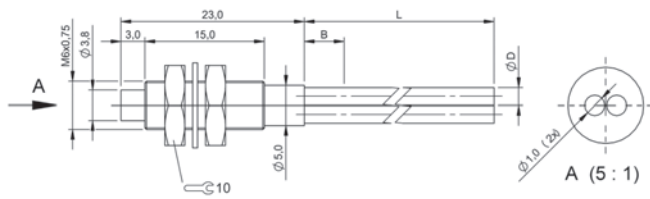
BF000H5



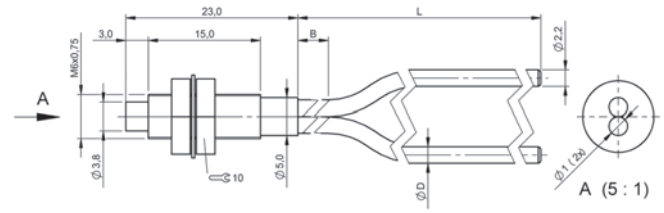
BF00064



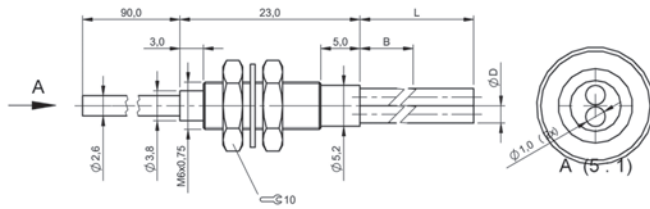
BF00003



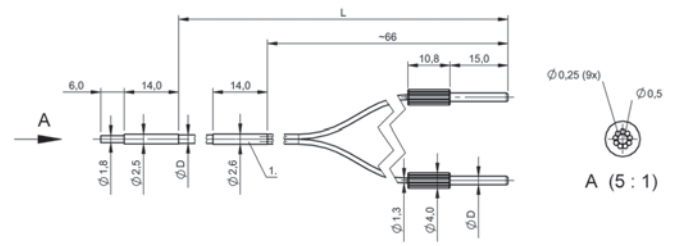
BF00063



BF00065

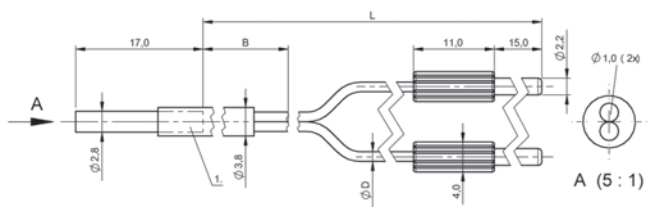


BF00004



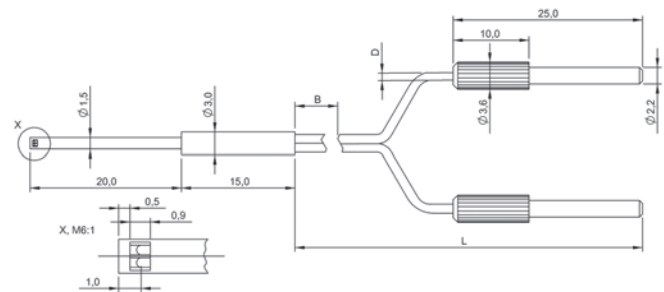
1) Protective tube

BF000AT

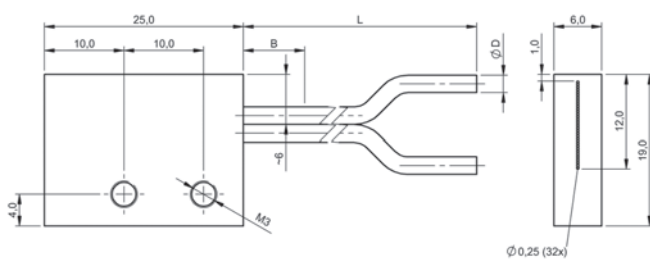


1) Protective tube

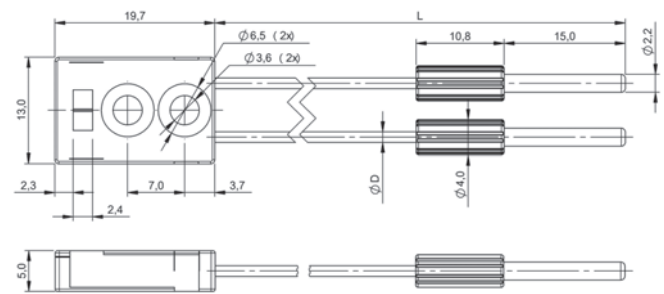
BF0005A



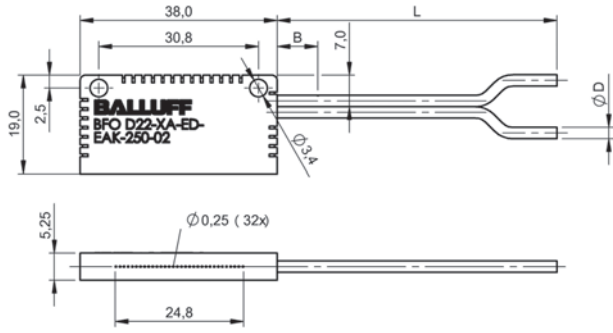
BF00062



BF0005Z



BF000AR



BF00060



	BOH005J BOH TI-G02-001-01-S49F	BOH000C BOH TK-G02-001-01-S49F	BOH000A BOH TR-G02-001-01-S49F	
Series	G02	G02	G02	
Dimension	Ø 2 x 8 mm	Ø 2 x 8.6 mm	Ø 2 x 8.6 mm	
Interface	for switching amplifier	for switching amplifier	for switching amplifier	
Principle of operation	Optical sensor head	Optical sensor head	Optical sensor head	
Principle of optical operation	Through-beam sensor	Through-beam sensor	Through-beam sensor	
Special optical feature	—	—	—	
Beam characteristic	Divergent	divergent, max. 3.5°	Divergent	
Light type	Infrared	microSPOT-LED red light	LED, red light	
Light spot size	—	Ø 10 mm at 100 mm	—	
Range	0...300 mm	0...500 mm	0...300 mm	
Connection	Cable with connector, M8x1 connector, 1.00 m, PUR	Cable with connector, M8x1 connector, 1.00 m, PUR	Cable with connector, M8x1 connector, 1.00 m, PUR	
Housing material	Stainless steel	Stainless steel	Stainless steel	
Material sensing surface	Epoxy	Epoxy	Epoxy	
Approval/Conformity	CE	CE	CE	
Productview	Page 602	Page 602	Page 602	



	BOH000J BOH TJ-G02-001-01-S49F	BOH000E BOH TK-M03-005-01-S49F	BOH0061 BOH TI-M03-001-01-S49F	BOH000U BOH TK-M03-001-01-S49F	BOH000T BOH TR-M03-001-01-S49F
	G02	M03	M03	M03	M03
	Ø 2 x 8.6 mm	6 x 5.5 x 7.6 mm	Ø 3 x 8 mm	Ø 3 x 8.7 mm	Ø 3 x 8.7 mm
	for switching amplifier	for switching amplifier	for switching amplifier	for switching amplifier	for switching amplifier
	Optical sensor head	Optical sensor head	Optical sensor head	Optical sensor head	Optical sensor head
	Through-beam sensor	Through-beam sensor	Through-beam sensor	Through-beam sensor	Through-beam sensor
	Light absorption with water	—	—	—	—
	Divergent	divergent, max. 3.5°	Divergent	divergent, max. 3.5°	Divergent
	Infrared for water detection	microSPOT-LED red light	Infrared	microSPOT-LED red light	LED, red light
	—	Ø 10 mm at 100 mm	—	Ø 10 mm at 100 mm	—
	0...250 mm	0...500 mm	0...300 mm	0...500 mm	0...300 mm
	Cable with connector, M8x1 connector, 1.00 m, PUR	Cable with connector, M8x1 connector, 1.00 m, PUR	Cable with connector, M8x1 connector, 1.00 m, PUR	Cable with connector, M8x1 connector, 1.00 m, PUR	Cable with connector, M8x1 connector, 1.00 m, PUR
	Stainless steel	Stainless steel	Stainless steel	Stainless steel	Stainless steel
	PMMA	Epoxy	Epoxy	Epoxy	Epoxy
	CE	CE	CE	CE	CE
	Page 602	Page 602	Page 602	Page 602	Page 602



	BOH00E6 BOH TK-M04-020-01-S49F	BOH00E5 BOH TR-M04-020-01-S49F	BOH0010 BOH TR-G05-005-02-S49F	
Series	M04	M04	G05	
Dimension	Ø 4 x 12 mm	Ø 4 x 12 mm	Ø 5 x 13 mm	
Interface	for switching amplifier	for switching amplifier	for switching amplifier	
Principle of operation	Optical sensor head	Optical sensor head	Optical sensor head	
Principle of optical operation	Through-beam sensor	Through-beam sensor	Through-beam sensor	
Special optical feature	—	—	—	
Beam characteristic	divergent, max. 2.5°	Divergent	Divergent	
Light type	microSPOT-LED red light	LED, red light	LED, red light	
Light spot size	Ø 8.00 mm at 100 mm	27 x 27 mm at 100 mm	—	
Range	0...2000 mm	0...2000 mm	0...4 m	
Connection	Cable with connector, M8x1 connector, 1.00 m, PUR	Cable with connector, M8x1 connector, 1.00 m, PUR	Cable with connector, M8x1 connector, 2.00 m, PUR	
Housing material	Nickel-plated brass	Nickel-plated brass	Stainless steel	
Material sensing surface	PMMA	PMMA	PMMA	
Approval/Conformity	CE	—	CE	
Productview	Page 602	Page 602	Page 602	



	BOH000F BOH TK-M05-006-01-S49F	BOH0065 BOH TI-M05-003-01-S49F	BOH0013 BOH TK-M05-003-01-S49F	BOH000Y BOH TR-M05-003-01-S49F	BOH006H BOH TI-M06-002-01-S49F
	M5	M5	M5	M5	M6
	8.8 x 8 x 8 mm	Ø 5 x 10 mm	Ø 5 x 12.5 mm	Ø 5 x 12.5 mm	Ø 6 x 12 mm
	for switching amplifier	for switching amplifier	for switching amplifier	for switching amplifier	for switching amplifier
	Optical sensor head	Optical sensor head	Optical sensor head	Optical sensor head	Optical sensor head
	Through-beam sensor	Through-beam sensor	Through-beam sensor	Through-beam sensor	Through-beam sensor
	—	—	—	—	—
	divergent, max. 2.5°	Divergent	divergent, max. 2.5°	Divergent	Divergent
	microSPOT-LED red light	Infrared	microSPOT-LED red light	LED, red light	Infrared
	Ø 8 mm at 100 mm	—	Ø 8 mm at 100 mm	—	—
	0...2 m	0...1 m	0...2 m	0...1 m	0...4 m
	Cable with connector, M8x1 connector, 1.00 m, PUR	Cable with connector, M8x1 connector, 1.00 m, PUR	Cable with connector, M8x1 connector, 1.00 m, PUR	Cable with connector, M8x1 connector, 1.00 m, PUR	Cable with connector, M8x1 connector, 1.00 m, PUR
	Brass	Brass	Brass	Brass	Brass
	Glass	PMMA	PMMA	PMMA	PMMA
	CE	CE	CE	CE	CE
	Page 602	Page 602	Page 602	Page 602	Page 602

Sensors

RFID

Machine Vision and Optical Identification

Human Machine Interfaces

Systems

Safety

Industrial Networking

Power Supply

Connectivity

Accessories



	BOH000K BOH TR-M06-002-02-S49F	BOH000H BOH TL-M06-007-02-S49F	BOH0012 BOH TK-M08-004-02-S49F	
Series	M6	M6	M8	
Dimension	Ø 6 x 13 mm	Ø 6 x 17 mm	Ø 8 x 20 mm	
Interface	for switching amplifier	for switching amplifier	for switching amplifier	
Principle of operation	Optical sensor head	Optical sensor head	Optical sensor head	
Principle of optical operation	Through-beam sensor	Through-beam sensor	Through-beam sensor	
Special optical feature	—	—	—	
Beam characteristic	Divergent	Collimated	divergent, max. 1°	
Light type	LED, red light	Laser red light	microSPOT-LED red light	
Light spot size	—	Ø 4.5 mm at 2 m	Ø 18 mm at 1 m	
Range	0...4 m	0...4 m	0...4 m	
Connection	Cable with connector, M8x1 connector, 2.00 m, PUR	Cable with connector, M8x1 connector, 2.00 m, PUR	Cable with connector, M8x1 connector, 2.00 m, PUR	
Housing material	Brass	Brass	Brass	
Material sensing surface	PMMA	Glass	Glass	
Approval/Conformity	CE	CE	CE	
Productview	Page 602	Page 603	Page 603	



	BOH006P BOH TI-Q06-001-01-S49F	BOH000P BOH TK-Q06-001-01-S49F	BOH000N BOH TR-Q06-001-01-S49F	BOH000R BOH TJ-Q06-001-01-S49F	BOH00EL BOH AI-R034-025-01-S49F
	Q06	Q06	Q06	Q06	—
	12 x 6 x 6 mm	12 x 6 x 6 mm	12 x 6 x 6 mm	12 x 6 x 6 mm	8 x 28 x 12 mm
	for switching amplifier	for switching amplifier	for switching amplifier	for switching amplifier	for switching amplifier
	Optical sensor head	Optical sensor head	Optical sensor head	Optical sensor head	Optical sensor head
	Through-beam sensor	Through-beam sensor	Through-beam sensor	Through-beam sensor	Through-beam sensor
	—	—	—	Light absorption with water	Light array
	Divergent	divergent, max. 2.5°	Divergent	Divergent	Divergent
	Infrared	microSPOT-LED red light	LED, red light	Infrared for water detection	Infrared
	—	Ø 8 mm at 100 mm	—	—	—
	0...1 m	0...2 m	0...1 m	0 m...500 mm	100 mm
	Cable with connector, M8x1 connector, 1.00 m, PUR	Cable with connector, M8x1 connector, 1.00 m, PUR	Cable with connector, M8x1 connector, 1.00 m, PUR	Cable with connector, M8x1 connector, 1.00 m, PUR	Cable with connector, M8x1 connector, 1 m, PUR
	Brass	Brass	Brass	Brass	PA 6
	PMMA	PMMA	PMMA	PMMA	PMMA
	CE	CE	CE	CE	CE
	Page 603	Page 603	Page 603	Page 603	Page 603

Sensors

RFID

Machine Vision and Optical Identification

Human Machine Interfaces

Systems

Safety

Industrial Networking

Power Supply

Connectivity

Accessories



	BOH001Z BOH TK-R003-007-01-S49F	BOH0020 BOH TR-R010-008-02-S49F	BOH007A BOH TJ-R010-008-01-S49F	
Series	R003	R010	R010	
Dimension	5.5 x 3 x 5.2 mm	12 x 6 x 8 mm	12 x 6 x 8 mm	
Interface	for switching amplifier	for switching amplifier	for switching amplifier	
Principle of operation	Optical sensor head	Optical sensor head	Optical sensor head	
Principle of optical operation	Through-beam sensor	Through-beam sensor	Through-beam sensor	
Special optical feature	—	—	Light absorption with water	
Beam characteristic	divergent, max. 3.5°	Divergent	Divergent	
Light type	microSPOT-LED red light	LED, red light	Infrared	
Light spot size	Ø 10 mm at 100 mm	—	—	
Range	0 m...500 mm	0...4 m	0 m...900 mm	
Connection	Cable with connector, M8x1 connector, 1.00 m, PUR	Cable with connector, M8x1 connector, 2.00 m, PUR	Cable with connector, M8x1 connector, 1.00 m, PUR	
Housing material	Brass	Brass	Brass	
Material sensing surface	Epoxy	PMMA	PMMA	
Approval/Conformity	CE	CE	CE	
Productview	Page 603	Page 603	Page 603	



	BOH002E BOH TK-R018-002-01-S49F	BOH002C BOH TK-R018-001-01-S49F	BOH002H BOH TK-R027-004-01-S49F	BOH002F BOH TK-R027-003-01-S49F	BOH0024 BOH AR-R113-010-01-S49F
	R018	R018	R027	R027	R113
	13.5 x 3 x 13 mm	13 x 3 x 13.5 mm	18 x 4.8 x 15 mm	15 x 4.8 x 18 mm	75 x 10 x 15 mm
	for switching amplifier	for switching amplifier	for switching amplifier	for switching amplifier	for analog amplifier
	Optical sensor head	Optical sensor head	Optical sensor head	Optical sensor head	Optical sensor head
	Through-beam sensor	Through-beam sensor	Through-beam sensor	Through-beam sensor	Through-beam sensor
	—	—	—	—	Light array
	divergent, max. 3.5°	divergent, max. 3.5°	divergent, max. 2.5°	divergent, max. 2.5°	—
	microSPOT-LED red light	microSPOT-LED red light	microSPOT-LED red light	microSPOT-LED red light	LED, red light
	Ø 10 mm at 100 mm	Ø 10 mm at 100 mm	Ø 8 mm at 100 mm	Ø 8 mm at 100 mm	—
	0 m...500 mm	0 m...500 mm	0...2 m	0...2 m	0...200 mm
	Cable with connector, M8x1 connector, 1.00 m, PUR	Cable with connector, M8x1 connector, 1.00 m, PUR	Cable with connector, M8x1 connector, 1.00 m, PUR	Cable with connector, M8x1 connector, 1.00 m, PUR	Cable with connector, M8x1 connector, 1.00 m, PUR
	Aluminum	Aluminum	Aluminum	Aluminum	Aluminum
	Glass	Glass	Glass	Glass	PMMA
	CE	CE	CE	CE	CE
	Page 603	Page 603	Page 604	Page 604	Page 604

Sensors

RFID

Machine Vision and Optical Identification

Human Machine Interfaces

Systems

Safety

Industrial Networking

Power Supply

Connectivity

Accessories



	BOH002M BOH AI-R165-011-01-S49F	BOH0002 BOH DI-G02-001-01-S49F	BOH0003 BOH DR-G02-001-01-S49F	
Series	R165	G02	G02	
Dimension	110 x 10 x 15 mm	Ø 2 x 8 mm	Ø 2 x 8 mm	
Interface	for analog amplifier	for switching amplifier	for switching amplifier	
Principle of operation	Optical sensor head	Optical sensor head	Optical sensor head	
Principle of optical operation	Through-beam sensor	Diffuse sensor, energetic	Diffuse sensor, energetic	
Special optical feature	Light array	—	—	
Beam characteristic	—	Divergent	Divergent	
Light type	Infrared	Infrared	LED, red light	
Light spot size	—	—	—	
Range	0...500 mm	0...12 mm	0...12 mm	
Connection	Cable with connector, M8x1 connector, 1.00 m, PUR	Cable with connector, M8x1 connector, 1.00 m, PUR	Cable with connector, M8x1 connector, 1.00 m, PUR	
Housing material	Aluminum	Stainless steel	Stainless steel	
Material sensing surface	PMMA	Epoxy	Epoxy	
Approval/Conformity	CE	CE	CE	
Productview	Page 604	Page 604	Page 604	



	BOH0004 BOH DI-M03-001-01-S49F	BOH0009 BOH DR-M03-001-01-S49F	BOH003C BOH DI-G05-002-01-S49F	BOH0006 BOH DK-G05-002-01-S49F	BOH0005 BOH DR-G05-002-01-S49F
	M03	M03	G05	G05	G05
	Ø 3 x 8 mm	Ø 3 x 8 mm	Ø 5 x 12 mm	Ø 5 x 12 mm	Ø 5 x 12 mm
	for switching amplifier	for switching amplifier	for switching amplifier	for switching amplifier	for switching amplifier
	Optical sensor head	Optical sensor head	Optical sensor head	Optical sensor head	Optical sensor head
	Diffuse sensor, energetic	Diffuse sensor, energetic	Diffuse sensor, energetic	Diffuse sensor, energetic	Diffuse sensor, energetic
	—	—	—	—	—
	Divergent	Divergent	Divergent	divergent, max. 3.5°	Divergent
	Infrared	LED, red light	Infrared	microSPOT-LED red light	LED, red light
	—	—	—	Ø 5 mm at 50 mm	Ø 14 mm at 50 mm
	0...12 mm	0...12 mm	0...60 mm	0...60 mm	0...60 mm
	Cable with connector, M8x1 connector, 1.00 m, PUR	Cable with connector, M8x1 connector, 1.00 m, PUR	Cable with connector, M8x1 connector, 1.00 m, PUR	Cable with connector, M8x1 connector, 1.00 m, PUR	Cable with connector, M8x1 connector, 1.00 m, PUR
	Stainless steel	Stainless steel	Stainless steel	Stainless steel	Stainless steel
	Epoxy	Epoxy	PMMA	PMMA	PMMA
	CE	CE	CE	CE	CE
	Page 604	Page 604	Page 604	Page 604	Page 604

Sensors

RFID

Machine Vision and
Optical Identification

Human Machine
Interfaces

Systems

Safety

Industrial Networking

Power Supply

Connectivity

Accessories



	BOH003M BOH DI-M06-002-01-S49F	BOH0008 BOH DK-M06-002-01-S49F	BOH0007 BOH DR-M06-002-01-S49F	
Series	M6	M6	M6	
Dimension	Ø 6 x 12 mm	Ø 6 x 12 mm	Ø 6 x 12 mm	
Interface	for switching amplifier	for switching amplifier	for switching amplifier	
Principle of operation	Optical sensor head	Optical sensor head	Optical sensor head	
Principle of optical operation	Diffuse sensor, energetic	Diffuse sensor, energetic	Diffuse sensor, energetic	
Special optical feature	—	—	—	
Beam characteristic	Divergent	divergent, max. 3.5°	Divergent	
Light type	Infrared	microSPOT-LED red light	LED, red light	
Light spot size	—	Ø 5 mm at 50 mm	Ø 14 mm at 50 mm	
Range	0...60 mm	0...60 mm	0...60 mm	
Connection	Cable with connector, M8x1 connector, 1.00 m, PUR	Cable with connector, M8x1 connector, 1.00 m, PUR	Cable with connector, M8x1 connector, 1.00 m, PUR	
Housing material	Brass	Brass	Brass	
Material sensing surface	PMMA	PMMA	PMMA	
Approval/Conformity	CE	CE	CE	
Productview	Page 604	Page 604	Page 604	



	BOH003W BOH DI-Q06-001-01-S49F	BOH000M BOH DK-Q06-001-01-S49F	BOH000L BOH DR-Q06-001-01-S49F	BOH002K BOH DK-R002-006-01-S49F	BOH0028 BOH DK-R018-002-01-S49F
	Q06	Q06	Q06	R002	R018
	12 x 6 x 6 mm	12 x 6 x 6 mm	12 x 6 x 6 mm	8 x 3 x 5.9 mm	13.5 x 3 x 13 mm
	for switching amplifier	for switching amplifier	for switching amplifier	for switching amplifier	for switching amplifier
	Optical sensor head	Optical sensor head	Optical sensor head	Optical sensor head	Optical sensor head
	Diffuse sensor, energetic	Diffuse sensor, energetic	Diffuse sensor, energetic	Diffuse sensor, energetic	Diffuse sensor, energetic
	—	—	—	—	—
	Divergent	divergent, max. 3.5°	Divergent	divergent, max. 3.5°	divergent, max. 3.5°
	Infrared	microSPOT-LED red light	LED, red light	microSPOT-LED red light	microSPOT-LED red light
	—	Ø 4 mm at 50 mm	Ø 11 mm at 50 mm	Ø 5 mm at 50 mm	Ø 5 mm at 50 mm
	0...60 mm	0...60 mm	0...60 mm	0...70 mm	3.5...60 mm
	Cable with connector, M8x1 connector, 1.00 m, PUR	Cable with connector, M8x1 connector, 1.00 m, PUR	Cable with connector, M8x1 connector, 1.00 m, PUR	Cable with connector, M8x1 connector, 1.00 m, PUR	Cable with connector, M8x1 connector, 1.00 m, PUR
	Brass	Brass	Brass	Brass	Aluminum
	PMMA	PMMA	PMMA	Epoxy	Glass
	CE	CE	CE	CE	CE
	Page 605	Page 605	Page 605	Page 605	Page 605

Sensors

RFID

Machine Vision and Optical Identification

Human Machine Interfaces

Systems

Safety

Industrial Networking

Power Supply

Connectivity

Accessories



	BOH0027 BOH DK-R018-001-01-S49F	BOH002A BOH DK-R027-004-01-S49F	BOH0029 BOH DK-R027-003-01-S49F	
Series	R018	R027	R027	
Dimension	13 x 3 x 13.5 mm	18 x 4.8 x 15 mm	15 x 4.8 x 18 mm	
Interface	for switching amplifier	for switching amplifier	for switching amplifier	
Principle of operation	Optical sensor head	Optical sensor head	Optical sensor head	
Principle of optical operation	Diffuse sensor, energetic	Diffuse sensor, energetic	Diffuse sensor, energetic	
Special optical feature	—	—	—	
Beam characteristic	divergent, max. 3.5°	divergent, max. 2.5°	divergent, max. 2.5°	
Light type	microSPOT-LED red light	microSPOT-LED red light	microSPOT-LED red light	
Light spot size	Ø 5 mm at 50 mm	Ø 8 mm at 100 mm	Ø 8 mm at 100 mm	
Range	3.5...60 mm	3.5...100 mm	3.5...100 mm	
Connection	Cable with connector, M8x1 connector, 1.00 m, PUR	Cable with connector, M8x1 connector, 1.00 m, PUR	Cable with connector, M8x1 connector, 1.00 m, PUR	
Housing material	Aluminum	Aluminum	Aluminum	
Material sensing surface	Glass	Glass	Glass	
Approval/Conformity	CE	CE	CE	
Productview	Page 605	Page 605	Page 605	



	BOH002L BOH FK-Z001-001-01-S49F	BOH001M BOH AR-F40-001-01-S49F	BOH001N BOH AR-F40-002-01-S49F	BOH001P BOH AR-F80-003-01-S49F	BOH001R BOH TR-T16-001-01-S49F
	Z001	F40	F40	F80	T16
	16 x 4 x 8.5 mm	60 x 10 x 60 mm	67 x 10 x 75 mm	107 x 10 x 75 mm	34 x 10 x 10 mm
	for switching amplifier	for analog amplifier	for analog amplifier	for analog amplifier	for switching amplifier
	Optical sensor head	Optical sensor head	Optical sensor head	Optical sensor head	Optical sensor head
	Diffuse sensor, energetic	Fork sensor	Fork sensor	Fork sensor	Fork sensor
	Fixed background suppression	Light array	Light array	Light array	Diffraction caused by liquid
	divergent, max. 3.5°	—	—	—	—
	microSPOT-LED red light	LED, red light	LED, red light	LED, red light	LED, red light
	Ø 1.8 mm at 7.5 mm	—	—	—	—
	3...15 mm	—	—	—	—
	Cable with connector, M8x1 connector, 1.00 m, PUR	Cable with connector, M8x1 connector, 1.00 m, PUR	Cable with connector, M8x1 connector, 1.00 m, PUR	Cable with connector, M8x1 connector, 1.00 m, PUR	Cable with connector, M8x1 connector, 1.00 m, PUR
	Brass	Aluminum	Aluminum	Aluminum	Aluminum
	Epoxy	Epoxy	PMMA	PMMA	Epoxy
	CE	CE	CE	CE	CE
	Page 605	Page 605	Page 606	Page 606	Page 606

Sensors

RFID

Machine Vision and Optical Identification

Human Machine Interfaces

Systems

Safety

Industrial Networking

Power Supply

Connectivity

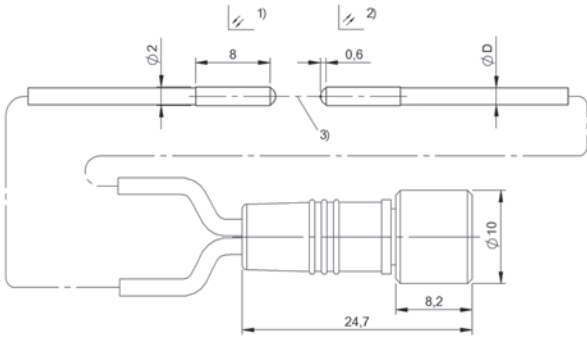
Accessories



	BOH001Y BOH TR-T32-001-01-S49F	BOH001U BOH TJ-T32-001-01-S49F	BOH0019 BOH TR-T48-001-01-S49F	
Series	T32	T32	T48	
Dimension	34 x 10 x 10 mm	34 x 10 x 10 mm	34 x 10 x 10 mm	
Interface	for switching amplifier	for switching amplifier	for switching amplifier	
Principle of operation	Optical sensor head	Optical sensor head	Optical sensor head	
Principle of optical operation	Fork sensor	Fork sensor	Fork sensor	
Special optical feature	Diffraction caused by liquid	Light absorption with water	Diffraction caused by liquid	
Beam characteristic	—	—	—	
Light type	LED, red light	Infrared for water detection	LED, red light	
Light spot size	—	—	—	
Range	—	—	—	
Connection	Cable with connector, M8x1 connector, 1.00 m, PUR	Cable with connector, M8x1 connector, 1.0 m, PUR	Cable with connector, M8x1 connector, 1.00 m, PUR	
Housing material	Aluminum	Aluminum	Aluminum	
Material sensing surface	Epoxy	Epoxy	Epoxy	
Approval/Conformity	CE	CE	CE	
Productview	Page 606	Page 606	Page 606	

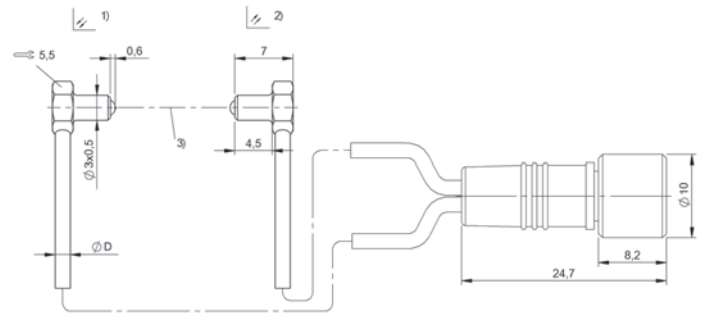


	BOH0015 BOH TJ-T48-001-01-S49F	BOH001A BOH TR-T64-001-01-S49F	BOH0016 BOH TJ-T64-001-01-S49F		
	T48	T64	T64		
	34 x 10 x 10 mm	34 x 10 x 10 mm	34 x 10 x 10 mm		
	for switching amplifier	for switching amplifier	for switching amplifier		
	Optical sensor head	Optical sensor head	Optical sensor head		
	Fork sensor	Fork sensor	Fork sensor		
	Light absorption with water	Diffraction caused by liquid	Light absorption with water		
	—	—	—		
	Infrared for water detection	LED, red light	Infrared for water detection		
	—	—	—		
	—	—	—		
	Cable with connector, M8x1 connector, 0.20 m, PUR	Cable with connector, M8x1 connector, 1.00 m, PUR	Cable with connector, M8x1 connector, 0.20 m, PUR		
	Aluminum	Aluminum	Aluminum		
	Epoxy	Epoxy	Epoxy		
	CE	CE	CE		
	Page 606	Page 606	Page 606		



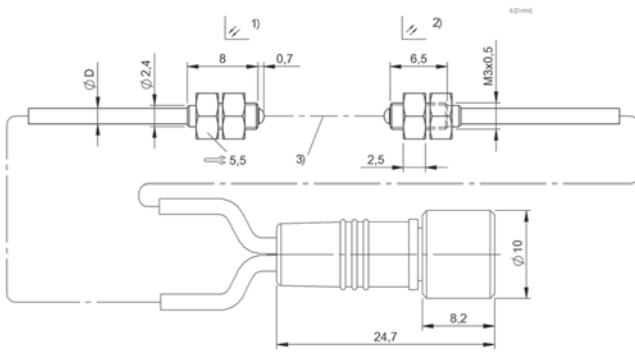
1) Emitter, 2) Receiver, 3) Optical axis

BOH005J, BOH000C, BOH000A, BOH000J



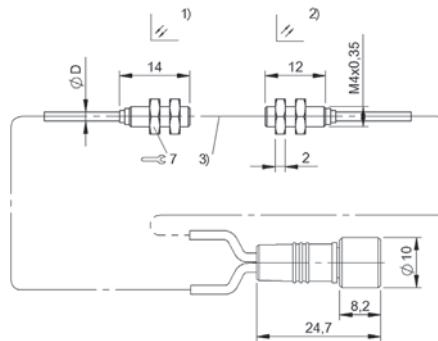
1) Emitter, 2) Receiver, 3) Optical axis

BOH000E



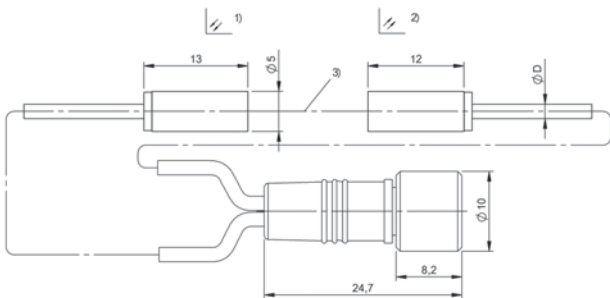
1) Emitter, 2) Receiver, 3) Optical axis

BOH0061, BOH000U, BOH000T



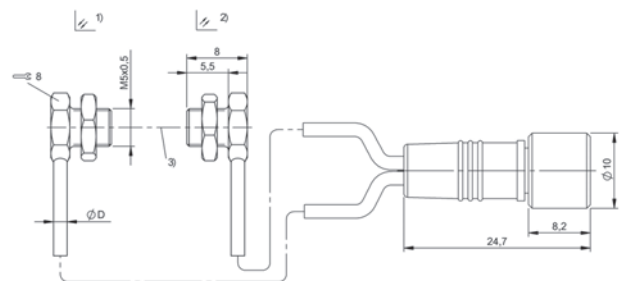
1) Emitter, 2) Receiver, 3) Optical axis

BOH0006, BOH0005



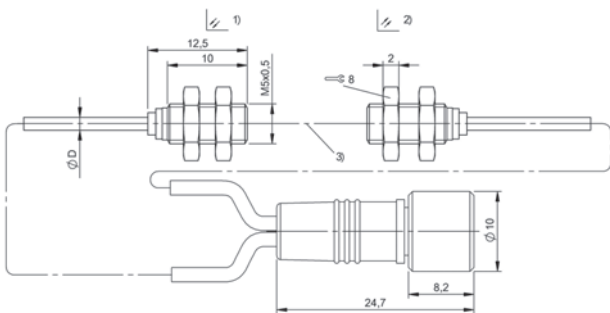
1) Emitter, 2) Receiver, 3) Optical axis

BOH0010



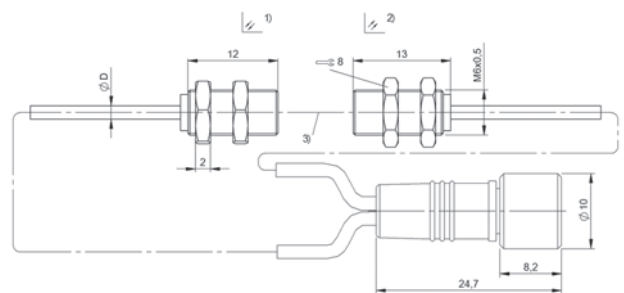
1) Emitter, 2) Receiver, 3) Optical axis

BOH000F



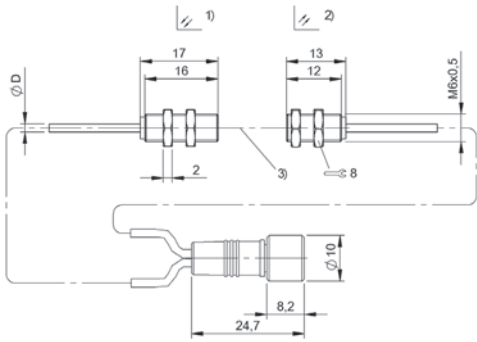
1) Emitter, 2) Receiver, 3) Optical axis

BOH0065, BOH0013, BOH000Y



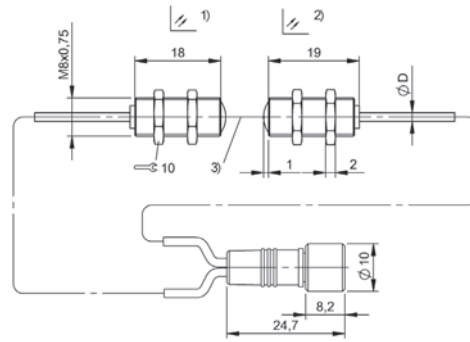
1) Emitter, 2) Receiver, 3) Optical axis

BOH006H, BOH000K



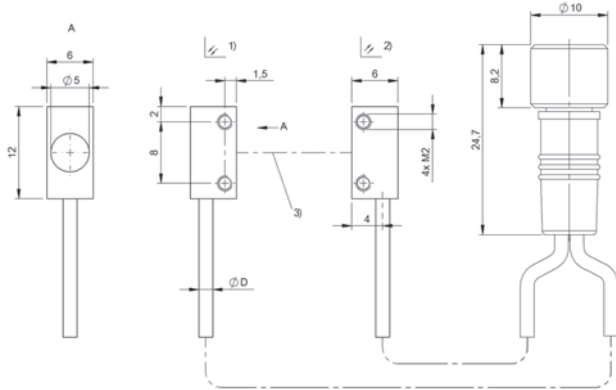
1) Emitter, 2) Receiver, 3) Optical axis

BOH000H



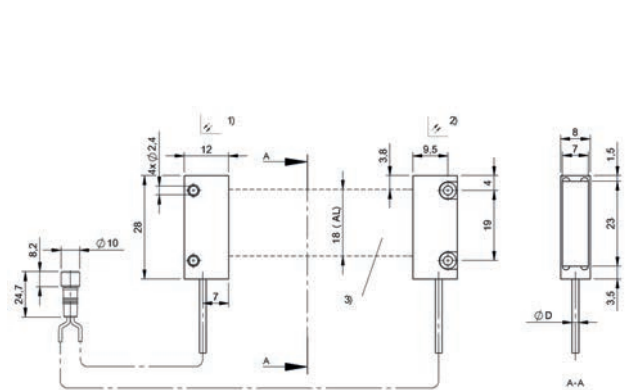
1) Emitter, 2) Receiver, 3) Optical axis

BOH0012



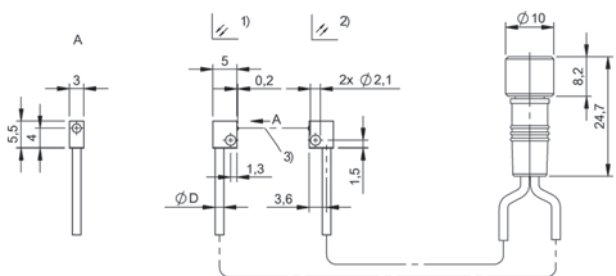
1) Emitter, 2) Receiver, 3) Optical axis

BOH006P, BOH000P, BOH000N, BOH000R



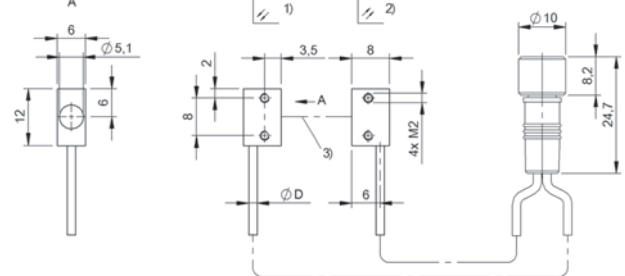
1) Emitter, 2) Receiver, 3) Light array

BOH00EL



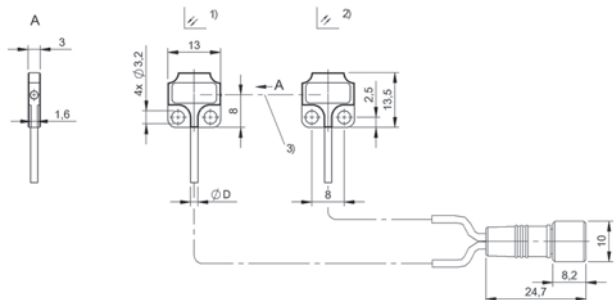
1) Emitter, 2) Receiver, 3) Optical axis

BOH0017



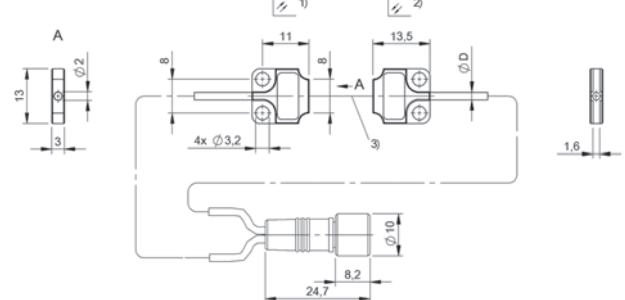
1) Emitter, 2) Receiver, 3) Optical axis

BOH0020, BOH007A



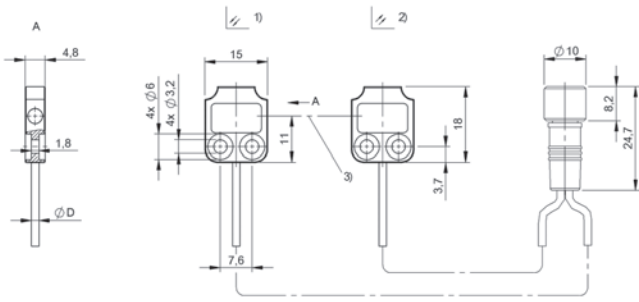
1) Emitter, 2) Receiver, 3) Optical axis

BOH002E



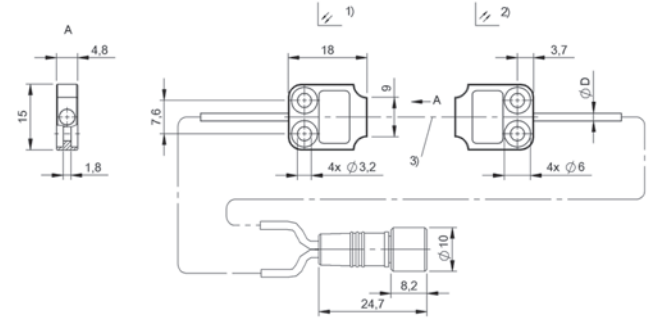
1) Emitter, 2) Receiver, 3) Optical axis

BOH002C



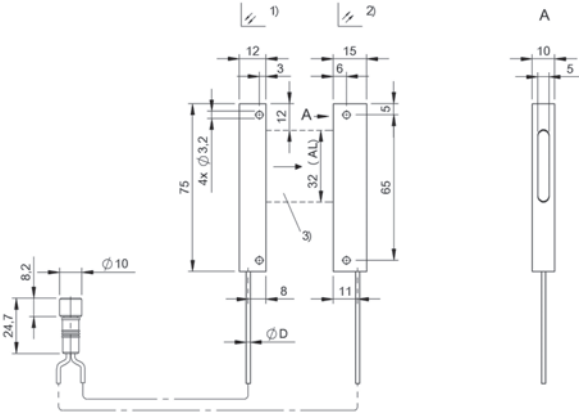
1) Emitter, 2) Receiver, 3) Optical axis

BOH002H



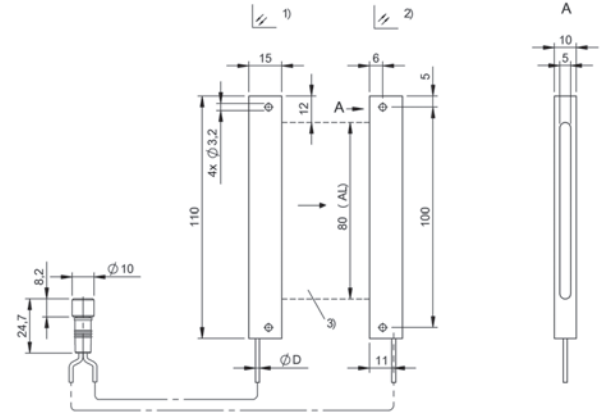
1) Emitter, 2) Receiver, 3) Optical axis

BOH002F



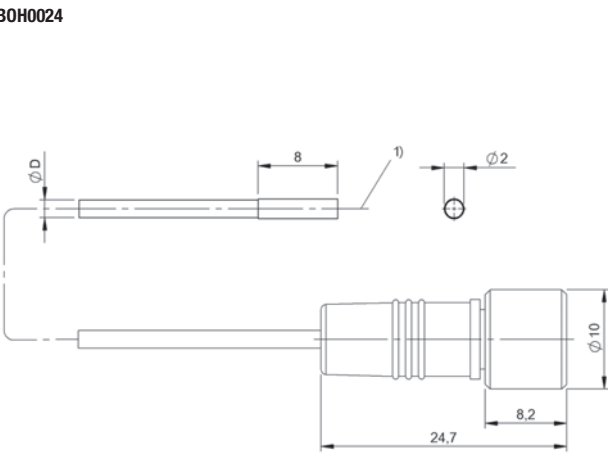
1) Emitter, 2) Receiver, 3) Light array

BOH002H



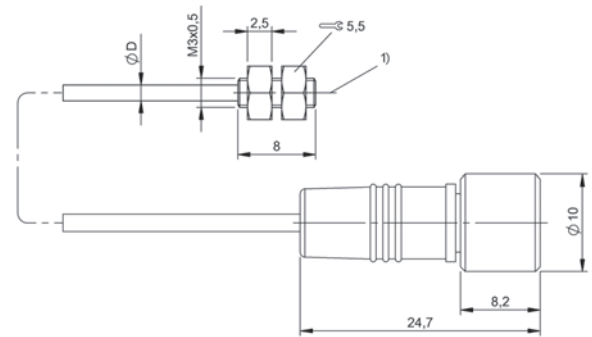
1) Emitter, 2) Receiver, 3) Light array

BOH002F



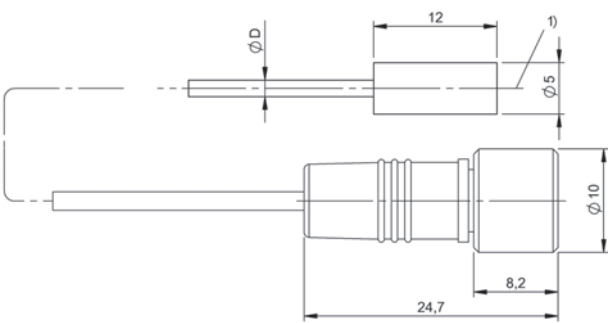
1) Optical axis

BOH0024



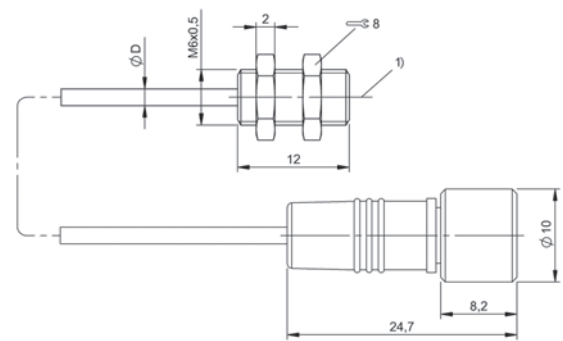
1) Optical axis

BOH002M



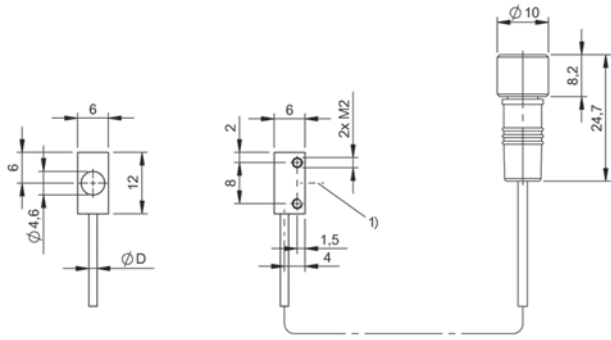
1) Optical axis

BOH0002, BOH0003



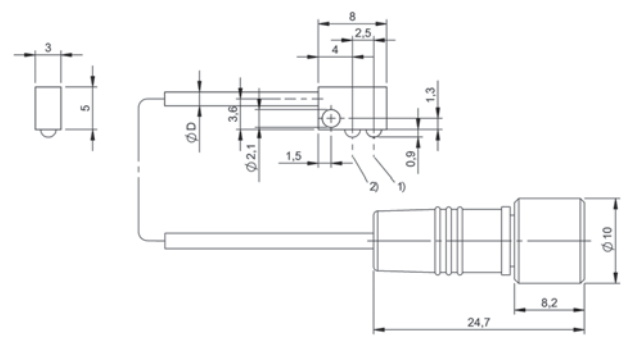
1) Optical axis

BOH0004, BOH0009



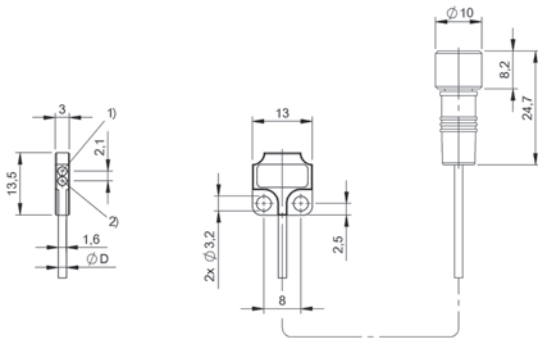
1) Optical axis

BOH003W, BOH000M, BOH000L



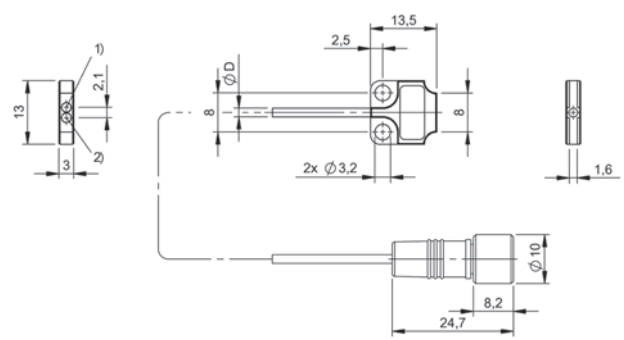
1) Optical axis emitter, 2) Optical axis receiver

BOH002K



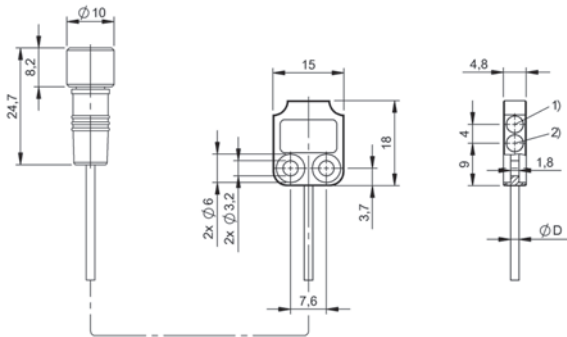
1) Optical axis emitter, 2) Optical axis receiver

BOH0028



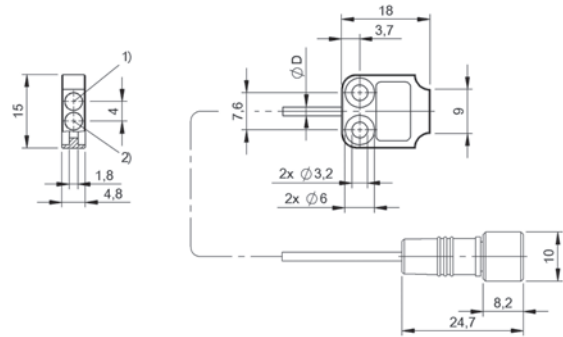
1) Optical axis emitter, 2) Optical axis receiver

BOH0027



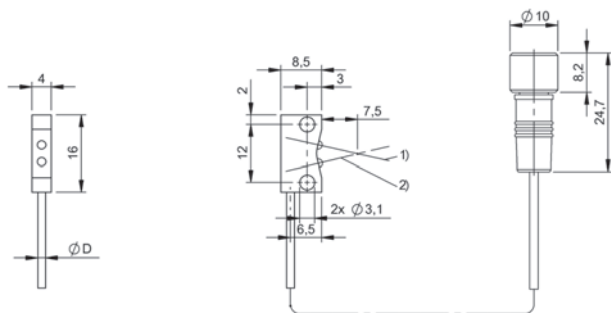
1) Optical axis emitter, 2) Optical axis receiver

BOH002A



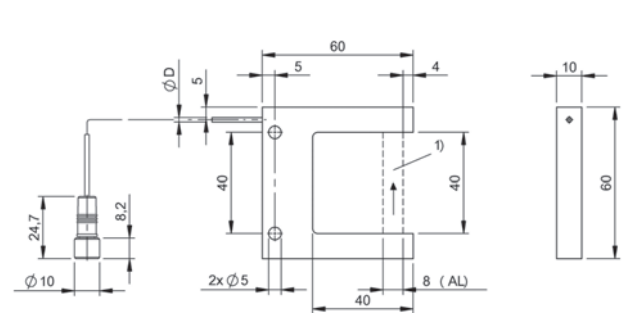
1) Optical axis emitter, 2) Optical axis receiver

BOH0029



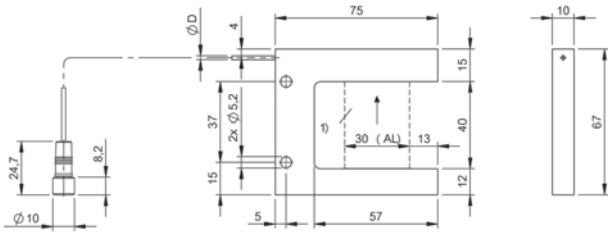
1) Optical axis emitter, 2) Optical axis receiver

BOH002L



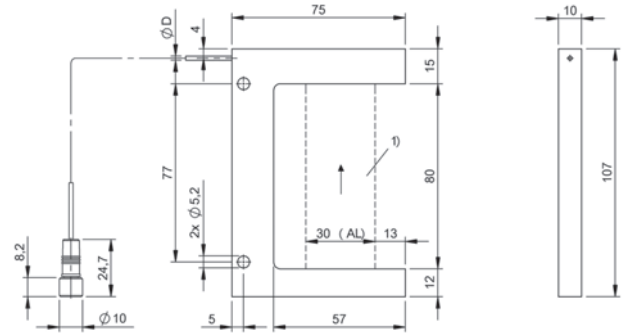
1) Light array

BOH001M



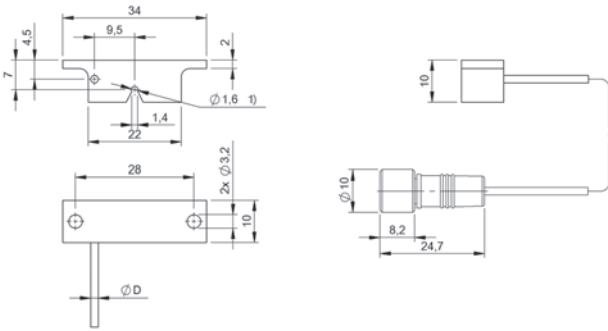
1) Light array

BOH001N



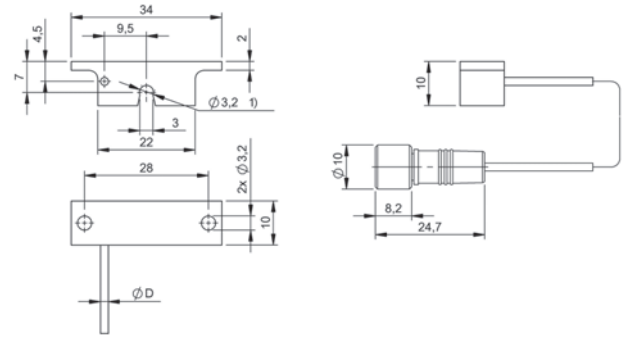
1) Light array

BOH001P



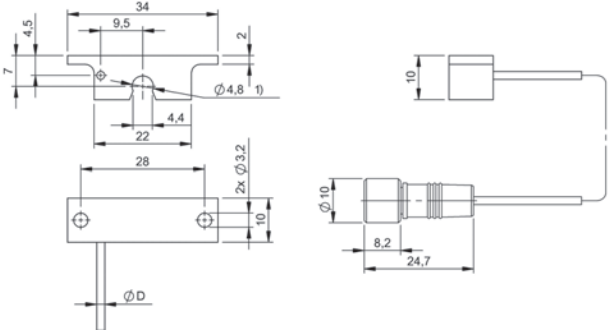
1) Hose fitting

BOH001R



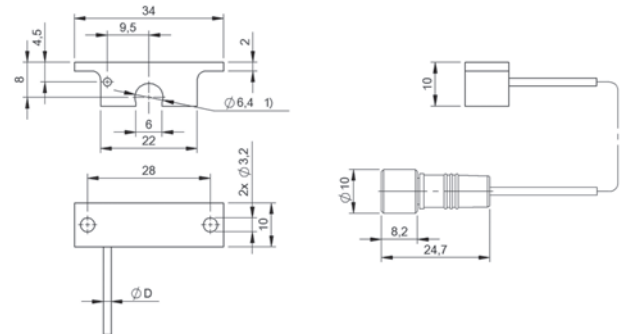
1) Hose fitting

BOH001Y, BOH001U



1) Hose fitting

BOH0019, BOH0015



1) Hose fitting

BOH001A, BOH0016



PNP normally open/normally closed			BAE00NE BAE SA-0H-035-PP-DV02	
NPN normally open/normally closed	BAE00PR BAE SA-0H-035-NP-DV02	BAE00PT BAE SA-0H-035-NP-S75G		
Analog, voltage 0...10 V				
Analog, current 4...20 mA				
Series	SA-OH	SA-OH	SA-OH	
Dimension	15 x 36 x 61 mm	15 x 36 x 61 mm	15 x 36 x 61 mm	
Display	LED green: Power, Digital display, Switching state - LED yellow	LED green: Power, Digital display, Switching state - LED yellow	Output function- LED yellow, LED green: Power, Error - LED green, flashing, Signal strength - segment display	
Setting	Light-on/dark-on, Time function on/off, Delay time, Teach mode Aut/Hys/Int/Pot	Light-on/dark-on, Time function on/off, Delay time, Teach mode Aut/Hys/Int/Pot	Sensitivity (Sn), Light-on/dark-on, Teach Sn, Read direction for segment display, Segment display on/off, Key disable on/off, Factory setting (Reset), Alarm threshold, Teach mode Aut/Fine/1-Pt/2-Pt, Hysteresis (4 levels), Integration time 4...128 ms, Upper and lower threshold, Delay time	
Adjuster	Slide switch 4 positions	Slide switch 4 positions	Slide switch 4 positions	
Connection	Cable, 2.00 m, PVC	M8x1 connector, 4-pin	Cable, 2.00 m, PVC	
Housing material	ABS PC	ABS PC	ABS PC	
Operating voltage Ub	10...30 VDC	10...30 VDC	10...30 VDC	
Approval/Conformity	CE, EAC	CE, EAC	CE, EAC	
Productview	Page 612	Page 612	Page 612	



	BAE00NF BAE SA-OH-035-PP-S75G				
				BAE00NH BAE SA-OH-038-UA-DV02	BAE00NG BAE SA-OH-038-UA-S75G
		BAE00N4 BAE SA-OH-038-IC-DV02	BAE00N5 BAE SA-OH-038-IC-S75G		
	SA-OH	SA-OH	SA-OH	SA-OH	SA-OH
	15 x 36 x 61 mm	15 x 36 x 61 mm	15 x 36 x 61 mm	15 x 36 x 61 mm	15 x 36 x 61 mm
	Output function- LED yellow, LED green: Power, Error - LED green, flashing, Signal strength - segment display	LED green: Power, Signal strength - segment display	LED green: Power, Signal strength - segment display	LED green: Power, Signal strength - segment display	LED green: Power, Signal strength - segment display
	Sensitivity (Sn), Light-on/dark-on, Teach Sn, Read direction for segment display, Segment display on/off, Key disable on/off, Factory setting (Reset), Alarm threshold, Teach mode Aut/Fine/1-Pt/2-Pt, Hysteresis (4 levels), Integration time 4...128 ms, Upper and lower threshold, Delay time	Sensitivity (Sn), Teach Sn, Teach mode Aut/Pot, Read direction for segment display, Segment display on/off, Key disable on/off, Factory setting (Reset)	Sensitivity (Sn), Teach Sn, Teach mode Aut/Pot, Read direction for segment display, Segment display on/off, Key disable on/off, Factory setting (Reset)	Sensitivity (Sn), Teach Sn, Teach mode Aut/Pot, Read direction for segment display, Segment display on/off, Key disable on/off, Factory setting (Reset)	Sensitivity (Sn), Teach Sn, Teach mode Aut/Pot, Read direction for segment display, Segment display on/off, Key disable on/off, Factory setting (Reset)
	Slide switch 4 positions	Slide switch 4 positions	Slide switch 4 positions	Slide switch 4 positions	Slide switch 4 positions
	Connector, M8x1 connector, 4-pin	Cable, 2.00 m, PVC	Connector, M8x1 connector, 4-pin	Cable, 2.00 m, PVC	Connector, M8x1 connector, 4-pin
	ABS PC	ABS PC	ABS PC	ABS PC	ABS PC
	10...30 VDC	15...30 VDC	15...30 VDC	15...30 VDC	15...30 VDC
	CE, EAC	CE, EAC	CE, EAC	CE, EAC	CE, EAC
	Page 612	Page 612	Page 612	Page 612	Page 612

Sensors

RFID

Machine Vision and Optical Identification

Human Machine Interfaces

Systems

Safety

Industrial Networking

Power Supply

Connectivity

Accessories



PNP normally open/normally closed			BAE00YC BAE SA-0H-050-PP-DV02	
PNP dynamic normally open/normally closed	BAE00N7 BAE SA-0H-040-PP-DV02	BAE00N7 BAE SA-0H-040-PP-S75G		
Series	SA-OH	SA-OH	SA-OH	
Dimension	15 x 36 x 61 mm	15 x 36 x 61 mm	15 x 36 x 61 mm	
Display	Output function- LED yellow, LED green: Power, Error - LED green, flashing, Signal strength - segment display	Output function- LED yellow, LED green: Power, Error - LED green, flashing, Signal strength - segment display	Output function- LED yellow, LED green: Power, Error - LED green, flashing, Signal strength - segment display	
Setting	Sensitivity (Sn), Light-on/dark-on, Teach Sn, Read direction for segment display, Segment display on/off, Key disable on/off, Factory setting (Reset), Hysteresis (4 levels), Integration time 4...128 ms, Delay time, Teach mode Aut/Hys/Int/Pot	Sensitivity (Sn), Light-on/dark-on, Teach Sn, Read direction for segment display, Segment display on/off, Key disable on/off, Factory setting (Reset), Hysteresis (4 levels), Integration time 4...128 ms, Delay time, Teach mode Aut/Hys/Int/Pot	Sensitivity (Sn), Light-on/dark-on, Read direction for segment display, Segment display on/off, Key disable on/off, Factory setting (Reset), Alarm threshold, Teach mode Aut/Fine/1-Pt/2-Pt, Hysteresis (4 levels), Upper and lower threshold, Delay time, Window function/standard switching function	
Adjuster	Slide switch 4 positions	Slide switch 4 positions	Slide switch 4 positions	
Connection	Cable, 2.00 m, PVC	Connector, M8x1 connector, 4-pin	Cable, 2.00 m, PVC	
Housing material	ABS PC	ABS PC	ABS PC	
Operating voltage Ub	10...30 VDC	10...30 VDC	10...30 VDC	
Approval/Conformity	CE, EAC	CE, EAC	CE, EAC	
Productview	Page 612	Page 612	Page 612	



BAE00Y7 BAE SA-OH-050-PP-S75G				
SA-OH				
15 x 36 x 61 mm				
Output function- LED yellow, LED green: Power, Error - LED green, flashing, Signal strength - segment display				
Sensitivity (Sn), Light-on/dark-on, Read direction for segment display, Segment display on/off, Key disable on/off, Factory setting (Reset), Alarm threshold, Teach mode Aut/Fine/1-Pt/2-Pt, Hysteresis (4 levels), Upper and lower threshold, Delay time, Window function/standard switching function				
Slide switch 4 positions				
Connector, M8x1 connector, 4-pin				
ABS PC				
10...30 VDC				
CE, EAC				
Page 612				

Sensors

RFID

Machine Vision and Optical Identification

Human Machine Interfaces

Systems

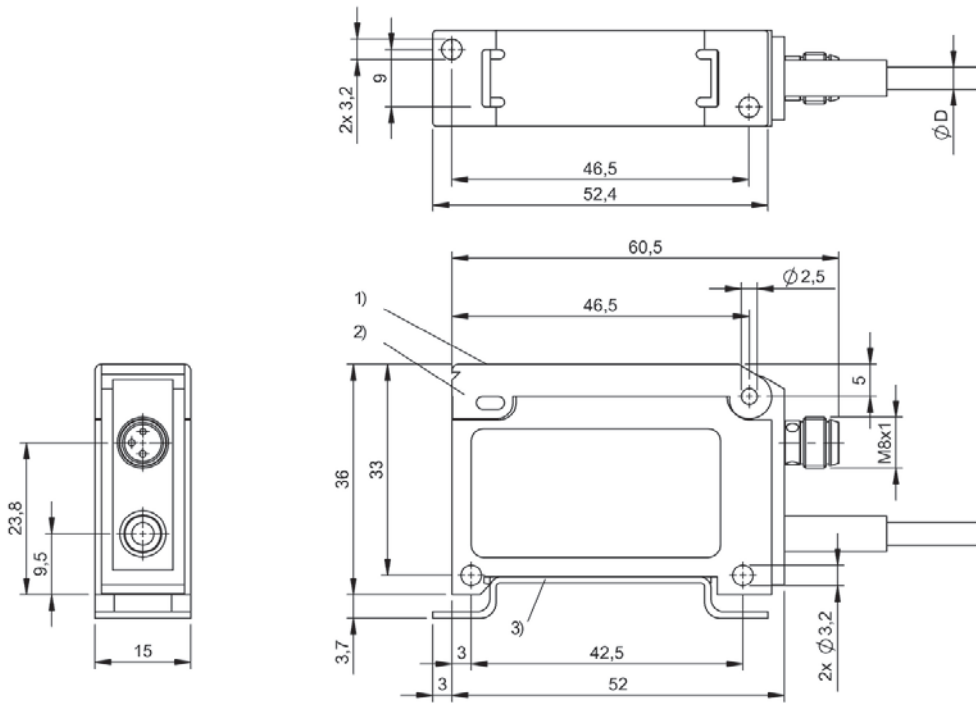
Safety

Industrial Networking

Power Supply

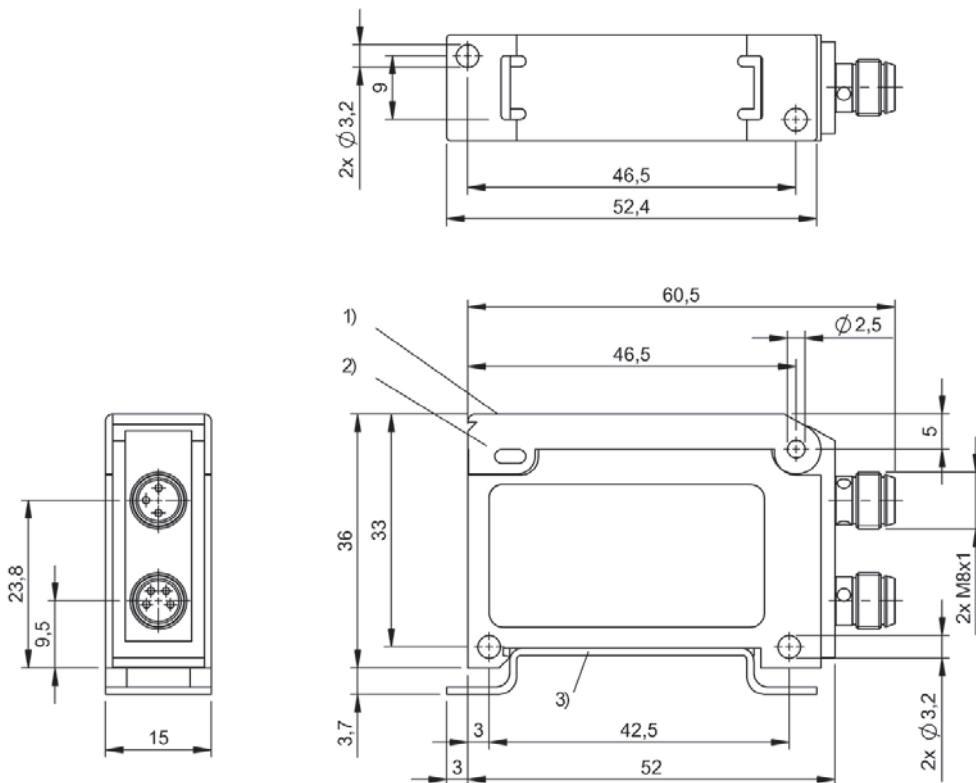
Connectivity

Accessories



1) Display and control panel

BAE00PR, BAE00NE, BAE00N4, BAE00NH, BAE00NJ, BAE00YC



1) Display and control panel, 2) Cover, 3) DIN rail

BAE00PT, BAE00NF, BAE00N5, BAE00N6, BAE00N7, BAE00Y7