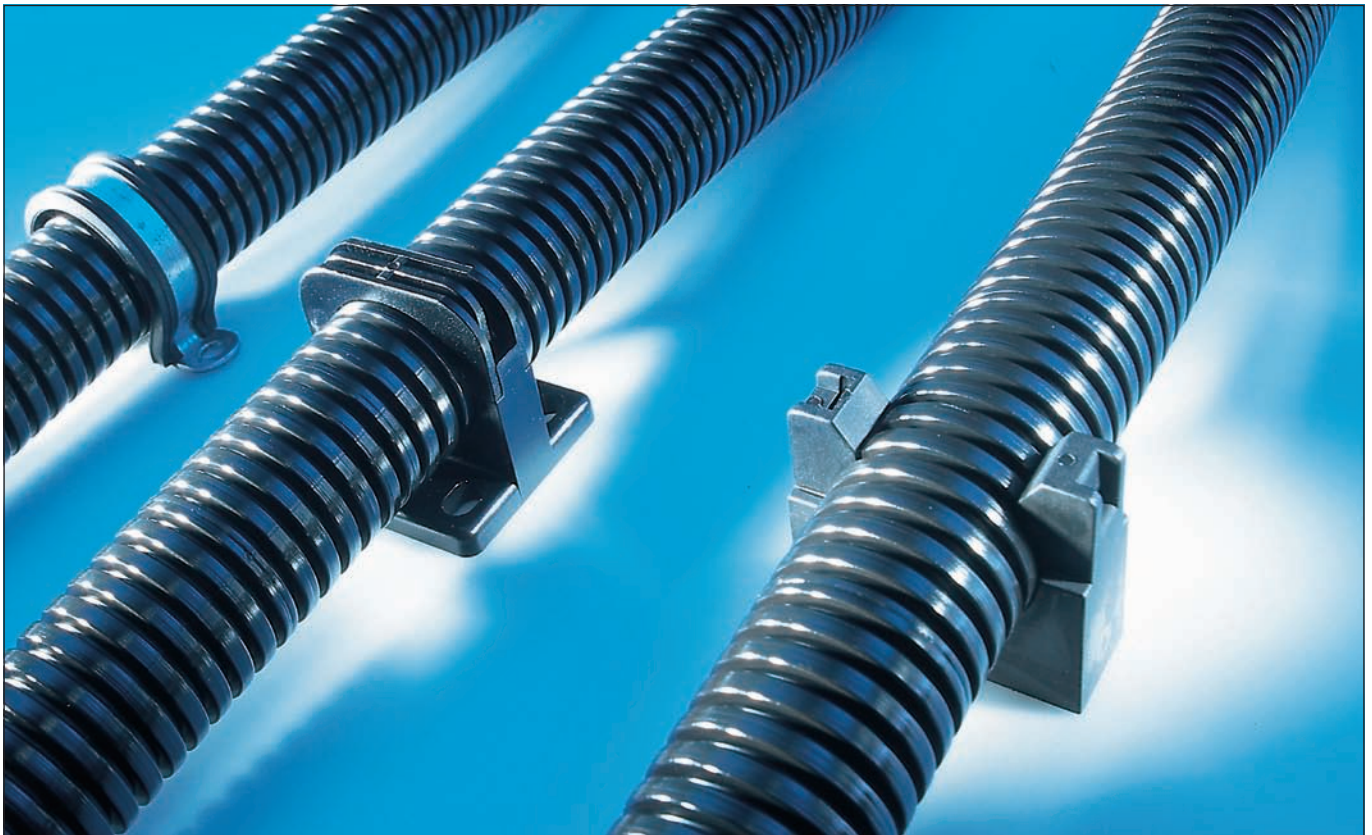


## Cable protection conduit holders



## Advantages



## Holder systems

The various holder systems are manufactured from high-grade polyamide and polycarbonate.

The new HS family offers the facility to arrange holders in rows as well as stacking them.


A snap-on mechanism enables the actual conduit holders to be combined with a variety of fastening plates (feet). An optional bracket offers additional safety under high tear-out forces.

The proven holders remain in our product range. However, they can easily be substituted by the new HS family. Compatibility is guaranteed.



- ✓ Stackable
- ✓ Arrangable in rows
- ✓ Variable
- ✓ Snap-in conduits
- ✓ Different types

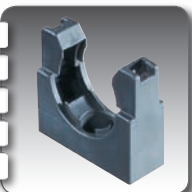
## Cable protection conduit holders product range



**Type HS (conduit holder)**

Conduit holder system made from polyamide, arrangerable in rows and stacks. The holder can be screwed on directly.


Page 166



**Type UH**

For fixing cable protection conduits to plants and machines.


Page 169



**Type HS (accessories, fixing foot)**

HS/F fixing foot (as UHF).  
HS/C fixing foot (as KAF).

Page 167



**Type UHG**

For fixing cable protection conduits to plants and machines.

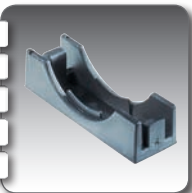
Page 170



**Type HS (accessories, bracket, fixing foot)**

HS/B bracket for HS/U holder for higher tear-out forces HS/S Fixing foot (as USH).

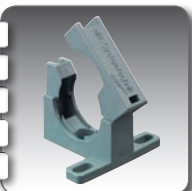
Page 168



**Type BL (clamping bracket for types UH and UHG)**

Optional clamping bracket for UH and UHG.

Page 171



**Type UHF**

For quick and easy connection of control cabinet to door.


Page 172



**Type USH**

For quick and easy connection of control cabinet to door.

Page 173



**Type EF/B**

Holder for rectangular conduit type EF.

Page 174



## Combination options

	HS/x	UH	UHG	UHF	USH	EF/B
EF	✗	✗	✗	✗	✗	✓
EW	✓	✓	✓	✓	✓	✗
EWf	✓	✓	✓	✓	✓	✗
EWS	✓	✓	✓	✓	✓	✗
EWX	✓	✓	✓	✓	✓	✗
EW-G	⚡	⚡	⚡	⚡	⚡	✗
EW-HY	✓	✓	✓	✓	✓	✗
EW-LS	✓	✓	✓	✓	✓	✗
EW-PA	✓	✓	✓	✓	✓	✗
EW-PA-LS	✓	✓	✓	✓	✓	✗
EW-PA-UL	✓	✓	✓	✓	✓	✗
EW-PA-EX	✓	✓	✓	✓	✓	✗
EW-PAB	✓	✓	✓	✓	✓	✗
EW-PAE	✓	✓	✓	✓	✓	✗
EW-PAL	✓	✓	✓	✓	✓	✗
EW-PAP	✓	✓	✓	✓	✓	✗
EW-PP	✓	✓	✓	✓	✓	✗
EW-PRF	✓	✓	✓	✓	✓	✗
EW-TEF	✓	✓	✓	✓	✓	✗
EWT-PA	✓	✓	✓	✓	✓	✗
EWT-PP	✓	✓	✓	✓	✓	✗
EWX-LS	✓	✓	✓	✓	✓	✗
EWX-PA	✓	✓	✓	✓	✓	✗
EWX-PA-LS	✓	✓	✓	✓	✓	✗
EWX-PA-UL	✓	✓	✓	✓	✓	✗
EWX-PAE	✓	✓	✓	✓	✓	✗
EWX-PAE-LS	✓	✓	✓	✓	✓	✗
GF	✗	✗	✗	✗	✗	✗

✓ combinable

✗ not combinable

⚡ combinable to an extent (remove sheathing)

## Material data

	Material	Temperature area [°C]			Fire specifications UL94	UL File number E148958	Halogen-free	Phosphorous-free	Cadmium-free	Asbestos-free	Lead-free	Silicone-free	RoHS Compliant
		Min.	Max.	Short periods									
HS/x	Polyamide PA6	-40	110	140	V0		✓	✓	✓	✓	✓	✓	✓
UH	Polyamide PA6	-40	110	140	V0	✓	✓	✓	✓	✓	✓	✓	✓
UHG	Polyamide PA6	-40	110	140	V0		✓	✓	✓	✓	✓	✓	✓
BL	Polyamide PA6	-40	110	140	V0	✓	✓	✓	✓	✓	✓	✓	✓
UHF	Polyamide PA6	-40	110	140	V0	✓	✓	✓	✓	✓	✓	✓	✓
USH	Polycarbonate	-30	100		V2	✓	✓	✓	✓	✓	✓	✓	✓
EF/B	Polyamide PA6	-40	110	140	V0		✓	✓	✓	✓	✓	✓	✓



# Cable protection conduit holders

## Type HS (conduit holder)

RoHS compliant

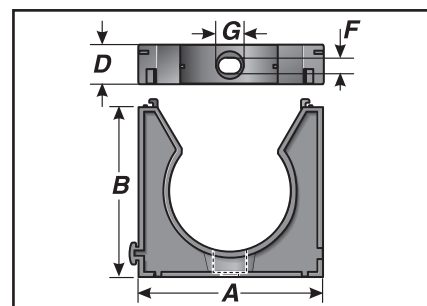
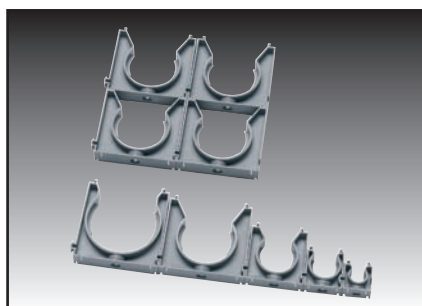
-40 to 110 °C  
transient 140 °C

Mod. polyamide

V0

Conduit holder system made from polyamide, arrangerable in rows and stacks. The holder can be screwed on directly. Optional accessories enable the bracket to be adapted to a wide variety of installation situations.

- Flexible system
- Stackable
- Arrangerable in rows
- Compatible with single holder types UH, UHF and USH



HS/U


Type	Order no.	Colour	Suitable for Murrflex	A mm	B mm	D mm	F Ø mm	G Ø mm	Pack qty.
Conduit holder suitable for Murrflex EW and EWX									
HS/U 07	83631052	black	M10/P07	21.5	21.0	14.0	4.5	8.0	100
HS/U 09	83631054	black	M12/P09	21.5	21.0	14.0	4.5	8.0	100
HS/U 11	83631056	black	M16/P11	28.0	29.0	14.0	5.5	10.0	100
HS/U 16	83631060	black	M20/P16	28.0	29.0	14.0	5.5	10.0	100
HS/U 21	83631062	black	M25/P21	43.0	42.4	14.0	5.5	10.0	50
HS/U 29	83631064	black	M32/P29	43.0	42.4	14.0	5.5	10.0	50
HS/U 36	83631066	black	M40/P36	63.5	57.5	14.0	5.5	10.0	50
HS/U 48	83631068	black	M50/P48	63.5	62.5	14.0	5.5	10.0	50
FAR / ABD authorisation for colour grey only									
HS/U 07	83631012	grey	M10/P07	21.5	21.0	14.0	4.5	8.0	100
HS/U 09	83631014	grey	M12/P09	21.5	21.0	14.0	4.5	8.0	100
HS/U 11	83631016	grey	M16/P11	28.0	29.0	14.0	5.5	10.0	100
HS/U 16	83631020	grey	M20/P16	28.0	29.0	14.0	5.5	10.0	100
HS/U 21	83631022	grey	M25/P21	43.0	42.4	14.0	5.5	10.0	50
HS/U 29	83631024	grey	M32/P29	43.0	42.4	14.0	5.5	10.0	50
HS/U 36	83631026	grey	M40/P36	63.5	57.5	14.0	5.5	10.0	50
HS/U 48	83631028	grey	M50/P48	63.5	62.5	14.0	5.5	10.0	50



## Type HS (accessories)

RoHS  
compliant

 -40 to 110 °C  
transient 140 °C

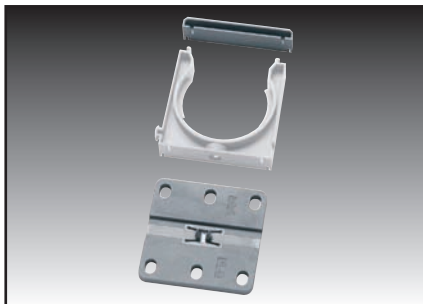
 Mod. polyamide

 V0

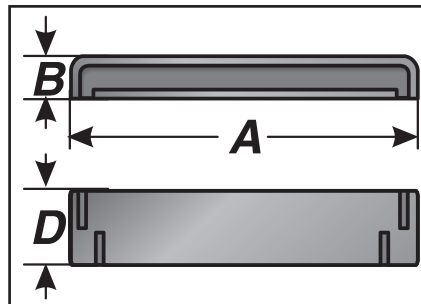
HS/B → Bracket for HS/U holder for higher tear-out forces.

HS/S → HS/S Fixing foot (as USH). HS/U conduit holder is simply snapped on.

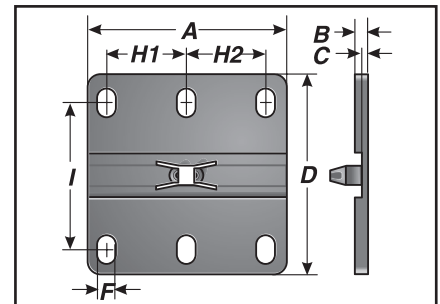
- Flexible system
- Stackable
- Arrangable in rows
- Compatible with single holder types UH, UHF and USH



HS/B HS/S



HS/B



HS/S

Type	Order no.	Colour	Suitable for holder	A mm	B mm	C mm	D mm	F Ø mm	H1/H2 mm	I mm	hole number (F)	Pack qty.
<b>Clamping bracket</b>												
HS/B 07-09	83631250	black	HS/U 07-09	21.5	5.0	-	14.0	-	-	-	-	100
HS/B 11-16	83631252	black	HS/U 11-16	28.0	5.0	-	14.0	-	-	-	-	100
HS/B 21-29	83631254	black	HS/U 21-29	43.0	6.0	-	14.0	-	-	-	-	50
HS/B 36-48	83631256	black	HS/U 36-48	63.5	7.0	-	14.0	-	-	-	-	50
<b>Foot, type USH</b>												
HS/S 07-09	83631450	black	HS/U 07-09	22.0	5.0	2.5	43.0	6.0	12.5/-	28.0	4	100
HS/S 11-16	83631452	black	HS/U 11-16	28.0	5.0	2.5	43.0	6.0	12.5/-	28.0	4	100
HS/S 21-29	83631454	black	HS/U 21-29	43.0	5.0	2.5	43.0	6.0	12.5/12.5	28.0	6	50
HS/S 36-49	83631456	black	HS/U 36-48	63.0	5.0	2.5	63.0	6.0	25.0/25.0	47.0	6	50
HS/S 07-09	83631410	grey	HS/U 07-09	22.0	5.0	2.5	43.0	6.0	12.5/-	28.0	4	100
HS/S 11-16	83631412	grey	HS/U 11-16	28.0	5.0	2.5	43.0	6.0	12.5/-	28.0	4	100
HS/S 21-29	83631414	grey	HS/U 21-29	43.0	5.0	2.5	43.0	6.0	12.5/12.5	28.0	6	50
HS/S 36-49	83631416	grey	HS/U 36-48	63.0	5.0	2.5	63.0	6.0	25.0/25.0	47.0	6	50



## Type HS (accessories)

RoHS compliant

-40 to 110 °C  
transient 140 °C

Mod. polyamide

V0

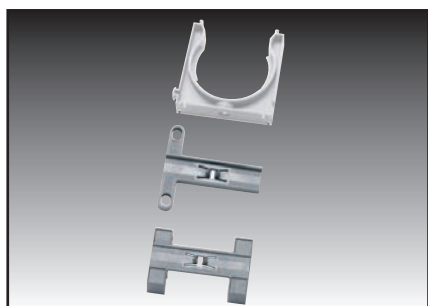
HS/S → fixing foot (as UHF).

HS/U holder is simply snapped onto the foot.

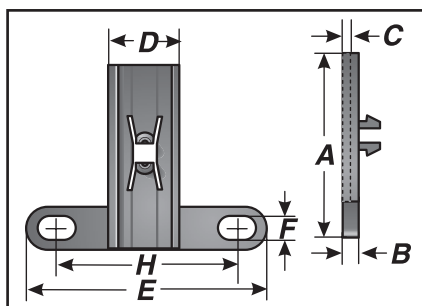
HS/S → Fixing foot (as KAF). Foot can be snapped onto top hat and C-rails.

HS/U holder is simply snapped onto the foot.

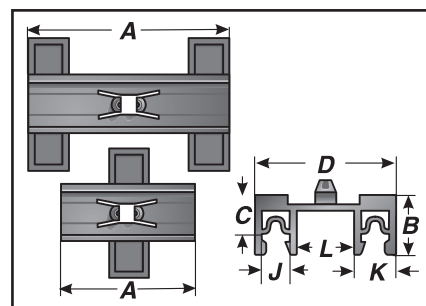
- Flexible system
- Stackable
- Arrangable in rows
- Compatible with single holder types UH, UHF and USH



HS/F HS/C



HS/F



HS/C


Type	Order no.	Colour	Suitable for holder	A mm	B mm	C mm	D mm	E mm	F Ø mm	H mm	J mm	K mm	L mm	Pack qty.
Foot, type UHF														
HS/F 07-09	83631650	black	HS/U 07-09	22.0	5.0	2.5	18.0	41.0	6.0	28.0	-	-	-	100
HS/F 11-16	83631652	black	HS/U 11-16	28.0	5.0	2.5	18.0	41.0	6.0	28.0	-	-	-	100
HS/F 21-29	83631654	black	HS/U 21-29	43.0	5.0	2.5	18.0	41.0	6.0	28.0	-	-	-	50
HS/F 36-49	83631656	black	HS/U 36-48	63.0	5.0	2.5	18.0	60.0	6.0	47.0	-	-	-	50
HS/F 07-09	83631610	grey	HS/U 07-09	22.0	5.0	2.5	18.0	41.0	6.0	28.0	-	-	-	100
HS/F 11-16	83631612	grey	HS/U 11-16	28.0	5.0	2.5	18.0	41.0	6.0	28.0	-	-	-	100
HS/F 21-29	83631614	grey	HS/U 21-29	43.0	5.0	2.5	18.0	41.0	6.0	28.0	-	-	-	50
HS/F 36-49	83631616	grey	HS/U 36-48	63.0	5.0	2.5	18.0	60.0	6.0	47.0	-	-	-	50
Foot, type KAF														
HS/C 07-09	83631850	black	HS/U 07-09	22.0	16.5	10.7	39.5	-	-	-	9.5	13.6	12.3	100
HS/C 11-16	83631852	black	HS/U 11-16	28.0	16.5	10.7	39.5	-	-	-	9.5	13.6	12.3	100
HS/C 21-29	83631854	black	HS/U 21-29	43.0	16.5	10.7	39.5	-	-	-	9.5	13.6	12.3	50
HS/C 36-49	83631856	black	HS/U 36-48	63.0	16.5	10.7	39.5	-	-	-	9.5	13.6	12.3	50
HS/C 07-09	83631810	grey	HS/U 07-09	22.0	16.5	10.7	39.5	-	-	-	9.5	13.6	12.3	100
HS/C 11-16	83631812	grey	HS/U 11-16	28.0	16.5	10.7	39.5	-	-	-	9.5	13.6	12.3	100
HS/C 21-29	83631814	grey	HS/U 21-29	43.0	16.5	10.7	39.5	-	-	-	9.5	13.6	12.3	50
HS/C 36-49	83631816	grey	HS/U 36-48	63.0	16.5	10.7	39.5	-	-	-	9.5	13.6	12.3	50



## Type UH

RoHS  
compliant

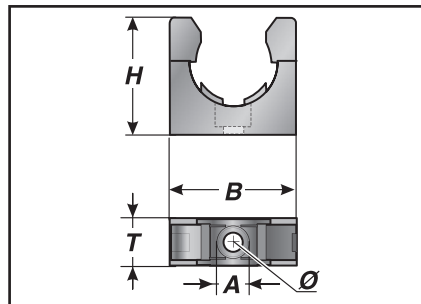
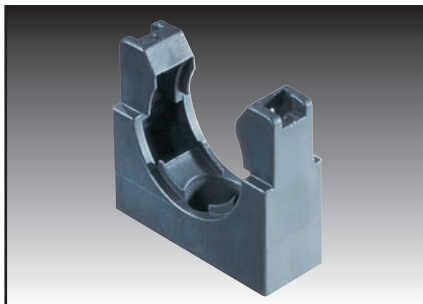
 -40 to 110 °C  
transient 140 °C

 Mod. polyamide

 V0

Fixing cable protection conduits to plants and machines.

- Quick assembly thanks to single-hole fixing
- Simply snap in conduits
- Optimum connection of conduit to holder thanks to double webs of holder
- Optional BL bracket for applications with high stresses



UH

Type	Order no.	Colour	Suitable for Murrflex	B mm	H mm	T mm	A mm	Ø mm	Pack qty.
suitable for Murrflex EW and EWX									
UH 07	83621210	black	M10/P7	29.0	23.0	11.0	7.5	4.0	100
UH 09/M4	83621212	black	M12/P9	30.0	23.0	12.5	8.5	4.0	100
UH 09/M5	83621213	black	M12/P9	30.0	23.0	12.5	8.5	5.0	100
UH 11/M4	83621214	black	M16/P11	30.0	23.0	12.5	8.5	4.0	100
UH 11/M5	83621215	black	M16/P11	30.0	23.0	12.5	8.5	5.0	100
UH 16/M5	83621216	black	M20/P16(S)	35.0	30.0	15.0	10.5	5.0	100
UH 16/M6	83621217	black	M20/P16(S)	35.0	30.0	15.0	10.5	6.0	100
UH 21	83621218	black	M25/P21(S)	42.0	38.0	16.0	11.0	6.0	100
UH 29	83621220	black	M32/P29(S)	51.0	43.0	16.0	11.5	6.0	50
UH 36	83621222	black	M40/P36(S)	61.0	51.0	18.0	13.5	6.0	50
UH 48	83621224	black	M50/P48(S)	74.0	64.0	19.0	13.5	6.0	50
UH 07	83621110	grey	M10/P7	29.0	23.0	11.0	7.5	4.0	100
UH 09/M4	83621112	grey	M12/P9	30.0	23.0	12.5	8.5	4.0	100
UH 09/M5	83621113	grey	M12/P9	30.0	23.0	12.5	8.5	5.0	100
UH 11/M4	83621114	grey	M16/P11	30.0	23.0	12.5	8.5	4.0	100
UH 11/M5	83621115	grey	M16/P11	30.0	23.0	12.5	8.5	5.0	100
UH 16/M5	83621116	grey	M20/P16(S)	35.0	30.0	15.0	10.5	5.0	100
UH 16/M6	83621117	grey	M20/P16(S)	35.0	30.0	15.0	10.5	6.0	100
UH 21	83621118	grey	M25/P21(S)	42.0	38.0	16.0	11.0	6.0	100
UH 29	83621120	grey	M32/P29(S)	51.0	43.0	16.0	11.5	6.0	50
UH 36	83621122	grey	M40/P36(S)	61.0	51.0	18.0	13.5	6.0	50
UH 48	83621124	grey	M50/P48(S)	74.0	64.0	19.0	13.5	6.0	50
FAR / ABD authorisation for colour grey only									








# Cable protection conduit holders

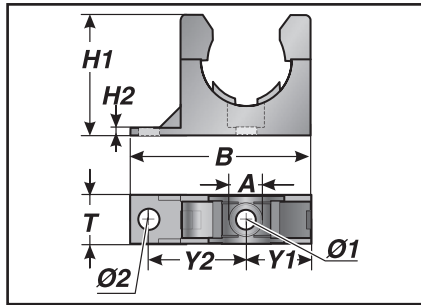
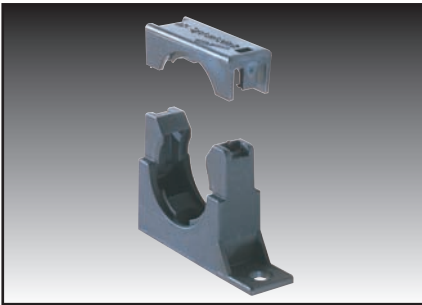
## Type UHG



-  -40 to 110 °C  
transient 140 °C
-  Mod. polyamide
-  V0

Fixing cable protection conduits to plants and machines.

- The additional plate protects the holder against torsion
- Simply snap in conduits
- Optimum connection of conduit to holder thanks to double grooves in the holder
- Optional BL bracket for applications with high stresses



UHG

Type	Order no.	Colour	Suitable for Murrflex	A mm	B mm	H1/2 mm	T mm	Y1/2 mm	Ø 1/2 mm	Pack qty.
------	-----------	--------	-----------------------	------	------	---------	------	---------	----------	-----------


suitable for Murrflex EW and EWX


UHG 09	83621250	black	M12/P9	7.5	46.0	23.0/2.0	12.5	15.0/24.5	4.4/6.2	100
UHG 11	83621252	black	M16/P11	7.5	46.0	23.0/2.0	12.5	15.0/24.5	4.4/6.2	100
UHG 16	83621254	black	M20/P16(S)	9.5	50.0	30.0/2.5	15.0	17.5/27.0	5.5/6.2	100
UHG 21	83621256	black	M25/P21(S)	11.5	57.0	38.0/2.5	16.0	20.7/30.7	6.5/6.2	100
UHG 29	83621258	black	M32/P29(S)	11.5	67.0	43.5/3.0	16.0	25.5/35.3	6.5/6.2	50
UHG 36	83621260	black	M40/P36(S)	11.5	77.0	51.0/3.5	18.5	30.5/40.0	6.5/6.2	50
UHG 48	83621262	black	M50/P48(S)	11.5	89.0	64.0/3.5	19.0	36.5/46.5	6.5/6.2	50



## Type BL (clamping bracket for types UH and UHG)

RoHS  
compliant

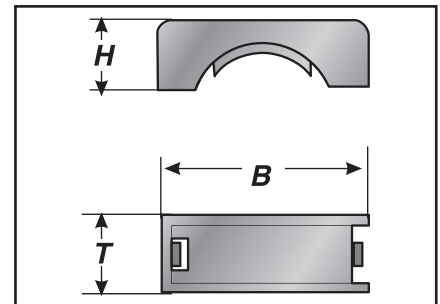
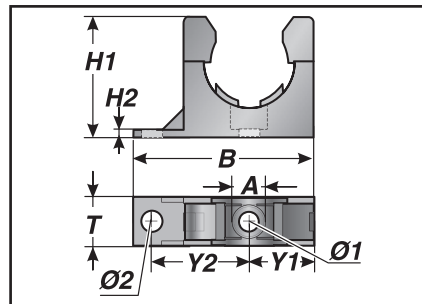
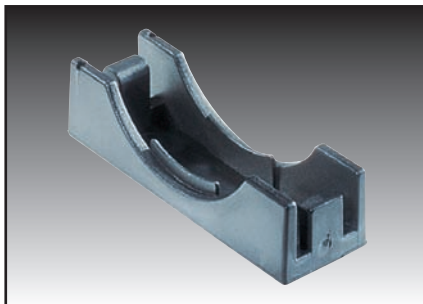
 -40 to 110 °C  
transient 140 °C

 Mod. polyamide

 V0

Optional bracket for UH and UHG.

- Additional mechanical retention of conduit when exposed to high stresses



BL

Type	Order no.	Colour	Suitable for UH/UHG	B mm	H mm	T mm	Pack qty.
BL 09	83621406	black	09	29.0	10.0	12.5	100
BL 11	83621408	black	11	29.0	11.0	12.5	100
BL 16	83621410	black	16	34.0	12.0	15.0	100
BL 21	83621412	black	21	41.0	13.0	15.5	100
BL 29	83621414	black	29	50.0	14.0	16.0	50
BL 36	83621416	black	36	60.0	17.0	18.0	50
BL 48	83621418	black	48	72.0	19.0	18.5	50
BL 09	83621146	grey	09	29.0	10.0	12.5	100
BL 11	83621148	grey	11	29.0	11.0	12.5	100
BL 16	83621150	grey	16	34.0	12.0	15.0	100
BL 21	83621152	grey	21	41.0	13.0	15.5	100
BL 29	83621154	grey	29	50.0	14.0	16.0	50
BL 36	83621156	grey	36	60.0	17.0	18.0	50
BL 48	83621158	grey	48	72.0	19.0	18.5	50

FAR / ABD authorisation for colour grey only








# Cable protection conduit holders

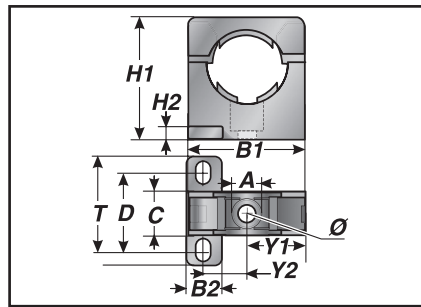
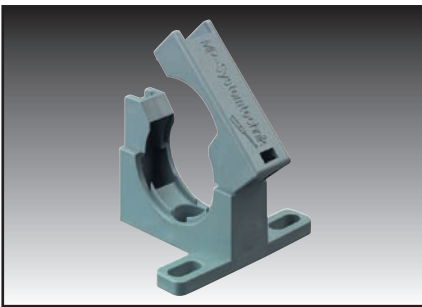
## Type UHF



-  -40 to 110 °C  
transient 140 °C
-  Mod. polyamide
-  V0

Quick and easy connection of control cabinet to door.

- Various fastening possibilities
- Fixing holes fit horizontal and vertical bar system in the control cabinet
- Conduits can still be rotated
- Pre-assembly of lower part possible
- High tensile strength thanks to double webs
- Brackets included in delivery



UHF

Type	Order no.	Colour	Suitable for Murrflex	A mm	B1/2 mm	C mm	D mm	H1/2 mm	T mm	Y1/2 mm	Ø mm	Pack qty.
------	-----------	--------	-----------------------	------	---------	------	------	---------	------	---------	------	-----------

suitable for Murrflex EW and EWX

UHF 16	83621610	grey	M20/P16(S)	9.5	35.0/12.0	15.0	27.0	35.0/5.0	38.0	17.2/11.3	5.5	100
UHF 21	83621612	grey	M25/P21(S)	11.5	42.0/12.0	15.5	27.0	42.0/5.0	38.0	21.0/14.7	6.5	100
UHF 29	83621614	grey	M32/P29(S)	11.5	51.0/12.0	16.0	44.0	48.0/5.0	60.0	25.5/19.3	6.5	50
UHF 36	83621616	grey	M40/P36(S)	11.5	61.0/13.0	18.5	47.5	55.0/6.0	60.0	30.3/24.5	6.5	50
UHF 48	83621618	grey	M50/P48(S)	11.5	73.0/13.0	18.5	47.5	68.0/8.0	60.0	36.5/30.0	6.5	50



## Type USH

RoHS  
compliant

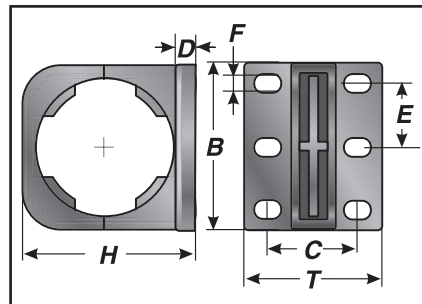
 -30 to 100 °C

 Polycarbonate

 V2

Quick and easy connection of control cabinet to door.

- Most universal fastening possibilities
- Fixing holes fit horizontal and vertical bar system in the control cabinet
- Conduits can still be rotated
- Pre-assembly of lower part possible



USH

Type	Order no.	Colour	Suitable for Murrflex	B mm	C mm	D mm	E mm	F mm	H mm	T mm	Pack qty.
------	-----------	--------	-----------------------	------	------	------	------	------	------	------	-----------

suitable for Murrflex EW and EWX

USH 11	83641019	black	M16/P11(S)	38.0	23.0	5.0	13.0	5.5	40.0	38.0	50
USH 16	83641020	black	M20/P16(S)	38.0	23.0	5.0	13.0	5.5	40.0	38.0	50
USH 21	83641022	black	M25/P21(S)	38.0	23.0	5.0	13.0	5.5	40.0	38.0	50
USH 29	83641024	black	M32/P29(S)	46.0	26.0	5.0	17.5	5.5	48.0	38.0	50
USH 36	83641026	black	M40/P36(S)	52.0	48.0	6.0	20.0	5.5	59.0	60.0	50
USH 48	83641028	black	M50/P48(S)	68.0	47.0	8.0	27.5	5.5	77.0	60.0	50
USH 11	83641009	grey	M16/P11(S)	38.0	23.0	5.0	13.0	5.5	40.0	38.0	50
USH 16	83641010	grey	M20/P16(S)	38.0	23.0	5.0	13.0	5.5	40.0	38.0	50
USH 21	83641012	grey	M25/P21(S)	38.0	23.0	5.0	13.0	5.5	40.0	38.0	50
USH 29	83641014	grey	M32/P29(S)	46.0	26.0	5.0	17.5	5.5	48.0	38.0	50
USH 36	83641016	grey	M40/P36(S)	52.0	48.0	6.0	20.0	5.5	59.0	60.0	50
USH 48	83641018	grey	M50/P48(S)	68.0	47.0	8.0	27.5	5.5	77.0	60.0	50








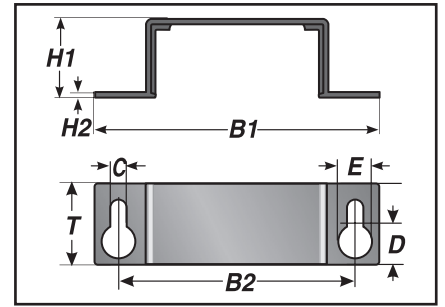
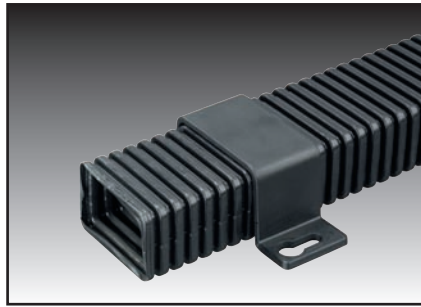
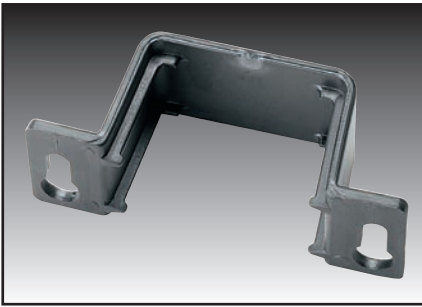
# Cable protection conduit holders

## Type EF/B

RoHS compliant

-  -40 to 110 °C  
transient 140 °C
-  Mod. polyamide
-  V0

- Holder for rectangular conduit type EF.
- Easy assembly
  - High tear-out strength



EF/B

Type	Order no.	Colour	B1 mm	B2 mm	C mm	D mm	E mm	H1 mm	H2 mm	T mm	Pack qty.
EF/B 26042	83361022	black	92.0	76.0	6.2	16.0	10.0	36.0	3.5	32	1

