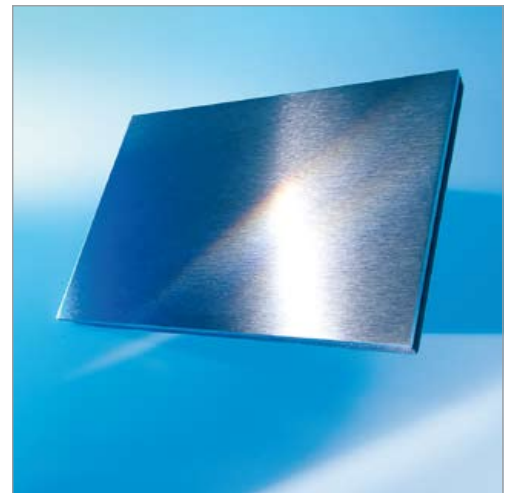
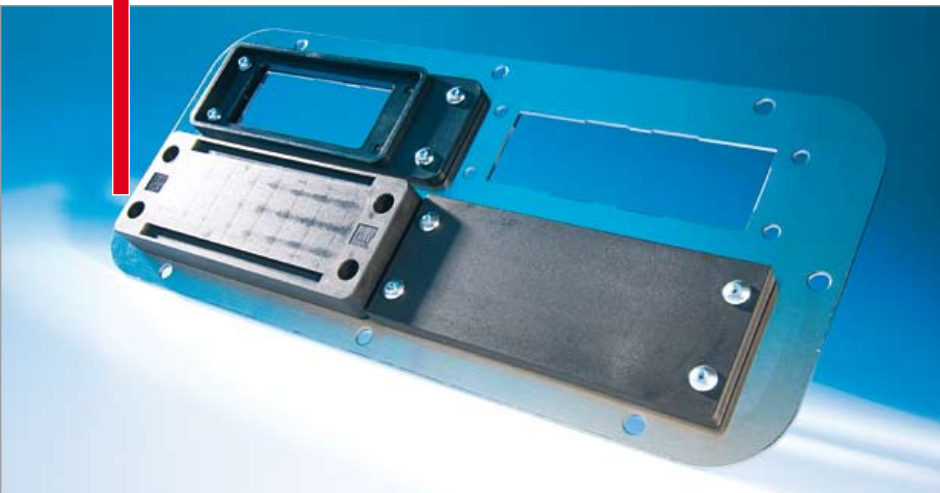


Accessories for cable entry systems and plates





Accessories for cable entry systems and cable entry plates

Advantages

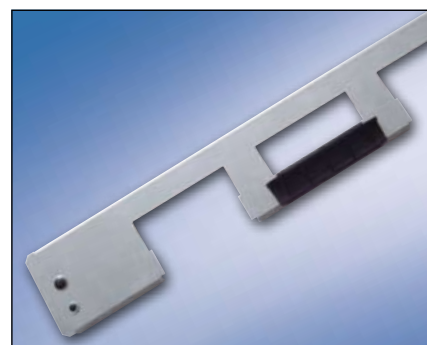


**If it doesn't fit
it will be made
to fit.**

To make the large range of Murplastik cable entry systems compatible for use in various control cabinets and housings made by different manufacturers, we keep a large selection of adapters on hand.

For example the control cabinet floor plate type SBB enables direct installation of our cable entry systems KDL/E into TS8 Rittal control cabinets.

Do you want combine various sizes of cable entry plates or insert both round and square components at the same time? Then you're in the right place!



- ✓ Blanking and adapter plates for standard cut-outs
- ✓ Numerous versions
- ✓ Simple mounting
- ✓ For cable entry systems made of plastic and metal
- ✓ For EMC applications

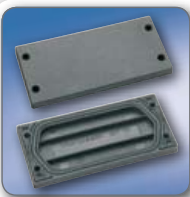
Overview



Control cabinet floor sheeting, type SBB

The control cabinet floor sheeting can be installed in Rittal (type TS8) control cabinets. Delivery includes locking plates type VP24.

Page 137



Blanking plate plastic, type BP

The BP blanking plates are suited for sealing non-used cut-outs for 16- or 24-pole connectors.

Page 138



Discharge plate, type KDL-AB and KDL/N-AB

The KDL and KDL/E discharge plates are suited for discharging interference which may occur on cable sheaths.

Page 139



Blanking plate type BP xx ALU/V4A (metal design)

Blanking plate for closing off unused adapter positions and cut-outs. The stainless steel version is particularly suitable for application in the food and chemical areas.

Page 140



Adapter plate Rittal

The Rittal adapter plates can be directly mounted into the prefabricated cut-outs from Rittal casings. They serve to retain various Murrplastik cable entry systems.

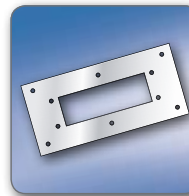
Page 141



Adapter plate Sarel

Adapter plate can be fitted directly into the standard cut-outs of Sarel cabinets. They serve to retain various Murrplastik cable entry systems.

Page 142



Adapter plate Lohmeier

The Lohmeier adapter plates can be directly mounted into the prefabricated cut-outs from Lohmeier casings. They serve to retain various Murrplastik cable entry systems.

Page 143



Adapter plate Ensto

The Ensto adapter plates can be directly mounted into the prefabricated cut-outs from Ensto casings. They serve to retain various Murrplastik cable entry systems.

Page 144



Accessories for cable entry systems and cable entry plates

Material data type SBB (control cabinet sheet flooring)



Halogen-free



Phosphorous-free



Cadmium-free



Asbestos-free



Lead-free



Silicone-free

The control cabinet floor sheeting type SBB is made of galvanised sheet steel. The included locking plates type VP are made of polyamide 6.6, conform with ROHS and are free of halogen, phosphorous, cadmium, asbestos, lead and silicone. If the control cabinet, floor sheeting and locking plates are installed correctly IP class 54 is achieved.

The control cabinet floor sheeting type SBB can be used in a temperature range of -40 to 125 °C (transient to 140 °C) and is inspected according to fire classification V0.

Material data type BP and BP/N (Blanking plate plastic design)



Halogen-free



Phosphorous-free



Cadmium-free



Asbestos-free



Lead-free



Silicone-free

The blanking plates types BP and BP/N comply with ROHS. The type BP/N features the higher protection class IP 65, type BP features protection class IP 54. Additionally all components are free of halogen, phosphorous, cadmium, asbestos, lead and silicone. They can be used within a temperature

range of -40 to 125 °C (transient 140 °C). The blanking plates are inspected according to fire classification V0. They are made of polyamide 6.6, the sealant is made of NBR. UR approvals as well as approvals for the German and French railways exist.

Material data type BP/H (Blanking plate plastic designs)



Halogen-free



Phosphorous-free



Cadmium-free



Asbestos-free



Lead-free



Silicone-free

The blanking plate type BP/H complies with ROHS and features protection class IP 42. Additionally this type is free of halogen, phosphorous, cadmium, asbestos, lead and silicone. The blanking plate can be used within a temperature range of -40 to 60 °C.

An inspection according to fire classification HB exists. It is made of TPE and features UR approval.

Material data type BP (Metal), KDL/AB, KDL/N-AB, AP/xx (Adapter plates, metal)



RoHS Compliant



V4A/ALU/NBR

The named types comply with ROHS. Aluminium designs (additional type ALU) made of high quality AlMg3 (3.3535). Stainless steel versions (additional type

V4A) made of stainless steel of the quality category V4A (1.4571). Supplied sealants are made of NBR.

Assigning cut-out codes / KDP types / adapter plates

Cut-out codes for direct assembly of the KDP in the control cabinet

Code
90C



KDP 90/28
Page 103



KDP 90/47
Page 103



KDP 90/55
Page 103



KDP 90/90+3
Page 104

Code
149A

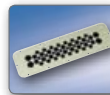


KDP 149/56
Page 112



KDP 149/158
Page 112

Code
149B



KDP 149/46
Page 113



KDP 149/140
Page 113



KDP 149/292
Page 113

Cut-out codes for indirect assembly of the KDP in the control cabinet using the adapter plate

Code
AP85A



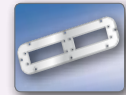
Page 144
KDP 24/AP/EN-KG/1
for 1x 24-pin

Code
AP90C



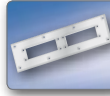
Page 141
KDP 24/AP/RI-KL/1
for 1x 24-pin

Code
AP90D



Page 141
KDP 24/AP/RI-AE/2
for 2x 24-pin

Code
AP92A



Page 141
KDP 24/AP/RI-BG/2
2x 24-pin

Code
AP92B



Page 141
KDP 24/AP/RI-BG/3+4
3x 24-pin + 2x M20 + 2x M25

Code
AP92C



Page 143
KDP 24/AP/LO-BG/1
for 1x 24-pin

Code
AP92D



Page 143
KDP 24/AP/LO-BG/2
for 2x 24-pin

Code
AP130A



Page 142
KDP 24/AP/SA/3+2
for 3x 24-pin + 2x M32



Page 142
KDP AP/SA/130/100/3+2
3x KDP 100/xx + 2x M32



Page 142
KDP/R AP/SA-1
for 6x M63

Code
AP130D



Page 142
KDP/R AP/SA-4
for 2x M32 + 2x M63

Code
AP130B



Page 142
KDP 24/AP/SA/2+4
for 2x 24-pin + 4x M32

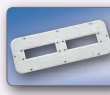


Page 142
KDP AP/SA/130/100/2+4
2x KDP 100/xx + 4x M32

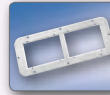


Page 142
KDP/R AP/SA-2
for 5x M63

Code
AP130C



Page 142
KDP 24/AP/SA/2+0
for 2x 24-pin

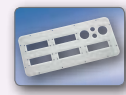


Page 142
KDP AP/SA/130/100/2
for 2x KDP 100/xx



Page 142
KDP/R AP/SA-3
for 3x M63

Code
AP220A



Page 142
KDP 24/AP/SA/5+4
5x 24-pin + 2x M25 + 2x M50

Code
AP149A



Page 141
KDP 24/AP/RI-AE/4
4x 24-pin



Page 141
KDP AP 149/100/2
for 2x KDP 100/xx

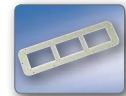
Code
AP149B



Page 141
KDP 24/AP/RI-AE/6+2
6x 24-pin + 2x M32



Page 141
KDP AP 149/100/3
for 3x KDP 100/xx



Page 141
KDP AP 149/105/3
for 3x KDP 105/xx



Accessories for cable entry systems and cable entry plates

Selection table Rittal Housing (Murrplastik cut-out codes)

Rittal		Murrplastik		Rittal		Murrplastik	
Order no.	Type	Cut-out code for direct assembly	Cut-out code for adapter plate.	Order no.	Type	Cut-out code for direct assembly	Cut-out code for adapter plate.
1030.500	AE		AP90D	1920.500	EL	149B	AP149B
1031.500	AE		AP90D	1926.500	EL	149B	AP149B
1038.500	AE		AP90D	6214.xx0	CP	90C	AP90C
1039.500	AE	149B	AP149B	6220.xx0	CP	90C	AP90C
1045.500	AE	149A	AP149A	6900.xxx	IW	90C	AP90C
1050.500	AE	149A	AP149A	6901.xxx	IW	90C	AP90C
1057.500	AE	149A	AP149A	7011.535	DK	149B	AP149B
1058.500	AE	149B	AP149B	7012.535	DK	149B	AP149B
1060.500	AE	149B	AP149B	7013.535	DK	149B	AP149B
1073.500	AE	149B	AP149B	7014.535	DK	149B	AP149B
1076.290	AE	149B	AP149B	7454.xxx	DK	90C	AP90C
1076.500	IN	149B	AP149B	7641.000	DK	149B	AP149B
1077.500	AE	149B	AP149B	7643.000	DK	149B	AP149B
1090.500	AE	149B	AP149B	7644.000	DK	149B	AP149B
1100.500	AE	149A	AP149A	7645.000	DK	149B	AP149B
1110.500	AE	149A	AP149A	9665.805	SV		AP90D
1114.500	AE	149A	AP149A	9665.815	SV	149A	AP149A
1130.500	AE	149A	AP149A	9665.825	SV	149B	AP149B
1180.500	AE	149B	AP149B	9665.835	SV	149B	AP149B
1213.500	AE	149A	AP149A	9665.845	SV	149B	AP149B
1260.500	AE	149B	AP149B	9665.855	SV	149A	AP149A
1280.500	AE	149B	AP149B	9751.125	CS	149A	AP149A
1338.500	AE	149A	AP149A	9751.145	CS	149A	AP149A
1339.500	AE	149B	AP149B	9751.165	CS	149A	AP149A
1350.500	AE	149A	AP149A	9752.125	CS	149A	AP149A
1360.500	AE	149B	AP149B	9771.110	CS	149A	AP149A
1376.500	AE	149B	AP149B	9771.115	CS	149A	AP149A
1380.500	AE		AP90D	9772.110	CS	149B	AP149B
1530.510	KL	90C	AP90C	9772.115	CS	149B	AP149B
1531.510	KL	90C	AP90C	9774.200	CS	149A	AP149A
1532.510	KL	90C	AP90C	9774.210	CS	149A	AP149A
1533.510	KL	90C	AP90C	9774.250	CS	149A	AP149A
1534.510	KL	90C	AP90C	9774.400	CS	149A	AP149A
1535.510	KL	90C	AP90C	9774.410	CS	149A	AP149A
1536.510	KL	90C	AP90C	9774.450	CS	149A	AP149A
1537.510	KL	90C	AP90C	9775.100	CS	149A	AP149A
1538.510	KL	90C	AP90C	9775.200	CS	149A	AP149A
1539.510	KL	90C	AP90C	9775.300	CS	149A	AP149A
1540.510	KL	90C	AP90C	9775.400	CS	149A	AP149A
1541.510	KL	90C	AP90C				
1542.510	KL	90C	AP90C				
1558.510	BG		AP92A				
1559.510	BG		AP92B				
1919.500	EL	149B	AP149B				

Selection table Sarel Housing (Murrplastik cut-out codes)

Sarel		Murrplastik		Sarel		Murrplastik		
Order no.	Cut-out code for direct assembly	Cut-out code for adapter plate.	Order no.	Cut-out code for direct assembly	Cut-out code for adapter plate.	Order no.	Cut-out code for direct assembly	Cut-out code for adapter plate.
87003 (83003)	–	AP130D	87532 (83532)	–	AP130A			
87303 (83303)	–	AP130D	87035 (83035)	–	AP130B			
87503 (83503)	–	AP130D	87335 (83335)	–	AP130B			
87018 (83018)	–	AP130D	87535 (83535)	–	AP130B			
87318 (83318)	–	AP130D	87037 (83037)	–	AP130C			
87518 (83518)	–	AP130D	87337 (83337)	–	AP130C			
87019 (83019)	–	AP130C	87537 (83537)	–	AP130C			
87319 (83319)	–	AP130C	87039 (83039)	–	AP220A			
87519 (83519)	–	AP130C	87339 (83339)	–	AP220A			
87021 (83021)	–	AP130D	87539 (83539)	–	AP220A			
87321 (83321)	–	AP130D	87043 (83043)	–	AP130A			
87521 (83521)	–	AP130D	87543 (83343)	–	AP130A			
87022 (83022)	–	AP130B	87543 (83543)	–	AP130A			
87322 (83322)	–	AP130B	87044 (83044)	–	AP220A			
87522 (83522)	–	AP130B	87344 (83344)	–	AP220A			
87023 (83023)	–	AP130C	87544 (83544)	–	AP220A			
87323 (83323)	–	AP130C	87045 (83045)	–	AP130C			
87523 (83523)	–	AP130C	87345 (83345)	–	AP130C			
87024 (83024)	–	AP130C	87545 (83545)	–	AP130C			
87324 (83324)	–	AP130C	87046 (83046)	–	AP130C			
87524 (83524)	–	AP130C	87346 (83346)	–	AP130C			
87025 (83025)	–	AP130B	87546 (83546)	–	AP130C			
87325 (83325)	–	AP130B	87047 (83047)	–	AP130B			
87525 (83525)	–	AP130B	87347 (83347)	–	AP130B			
87026 (83026)	–	AP130C	87054 (83054)	–	AP130A			
87326 (83026)	–	AP130C	87354 (83354)	–	AP130A			
87526 (83526)	–	AP130C	87554 (83554)	–	AP130A			
87027 (83027)	–	AP130C	87056 (83056)	–	AP130A			
87327 (83327)	–	AP130C	87356 (83356)	–	AP130A			
87527 (83527)	–	AP130C	87556 (83556)	–	AP130A			
87028 (83028)	–	AP130A	87057 (83057)	–	AP220A			
87328 (83328)	–	AP130A	87357 (83357)	–	AP220A			
87528 (83528)	–	AP130A	87557 (83557)	–	AP220A			
87029 (83029)	–	AP130A	87059 (83059)	–	AP220A			
87329 (83329)	–	AP130A	87359 (83359)	–	AP220A			
87529 (83529)	–	AP130A	87559 (83559)	–	AP220A			
87030 (83030)	–	AP220A	87060 (83060)	–	AP130C			
87330 (83330)	–	AP220A	87360 (83360)	–	AP130C			
87530 (83530)	–	AP220A	87560 (83560)	–	AP130C			
87031 (83031)	–	AP130A	87061 (83061)	–	AP130C			
87331 (83331)	–	AP130A	87361 (83361)	–	AP130C			
87531 (83531)	–	AP130A	87561 (83561)	–	AP130C			
87032 (83032)	–	AP130A	87062 (83062)	–	AP130C			
87332 (83332)	–	AP130A						

(Continued on the next page)



Accessories for cable entry systems and cable entry plates

Selection table Sarel/Ensto/Lohmeier Housing (Murrplastik cut-out codes)

Sarel	Murrplastik	
	Order no.	Cut-out code for adapter plate.
		(Continued...)
87362 (83362)	–	AP130C
87562 (83562)	–	AP130C
87063 (83063)	–	AP130B
87363 (83363)	–	AP130B
87563 (83563)	–	AP130B
87066 (83066)	–	AP130B
87366 (83366)	–	AP130B
87064 (83064)	–	AP130C
87364 (83364)	–	AP130C
87564 (83564)	–	AP130C
87065 (83065)	–	AP130B
87365 (83365)	–	AP130B
87565 (83565)	–	AP130B
87067 (83067)	–	AP130C
87367 (83367)	–	AP130C
87567 (83567)	–	AP130C
87070 (83070)	–	AP130B
87370 (83370)	–	AP130B
87570 (83570)	–	AP130B
87071 (83071)	–	AP130B
87371 (83371)	–	AP130B
87571 (83571)	–	AP130B





Ensto	Murrplastik	
	Order no.	Cut-out code for adapter plate.
FFUF153012G Cubo F X	–	AP85A
FFUF203012G Cubo F X	–	AP85A
FFUF204012G Cubo F X	–	AP85A
FFUF205012G Cubo F X	–	AP85A
FFUF206012G Cubo F X	–	AP85A
FFUF208012G Cubo F X	–	AP85A
FFUF302012 Cubo F X	–	AP85A
FFUF303012G Cubo F X	–	AP85A
FFUF304012G Cubo F X	–	AP85A
FFUF305012G Cubo F X	–	AP85A
FFUF306012G Cubo F X	–	AP85A
FFUF404012G Cubo F X	–	AP85A
FFUF406012G Cubo F X	–	AP85A
FFUF408012G Cubo F X	–	AP85A
FFUF406012G Cubo F X	–	AP85A
FFUF408012G Cubo F X	–	AP85A
FFUF502012 Cubo F X	–	AP85A
FFUF602012 Cubo F X	–	AP85A
FFUF802012 Cubo F X	–	AP85A

Lohmeier		Murrplastik	
Order no.	Type	Cut-out code for direct assembly	Cut-out code for adapter plate.
BG-122020	F-200	–	AP92C
BG-123020	F-300	–	AP92D
BG-123030	F-300	–	AP92D
BG-124020	F-200	–	AP92C
BG-124030	F-200	–	AP92C
BG-125030	F-200	–	AP92C
BG-125030	F-300	–	AP92D
BG-126020	F-300	–	AP92D
BG-126030	F-300	–	AP92D

Control cabinet floor sheeting, type SBB

Made in Germany



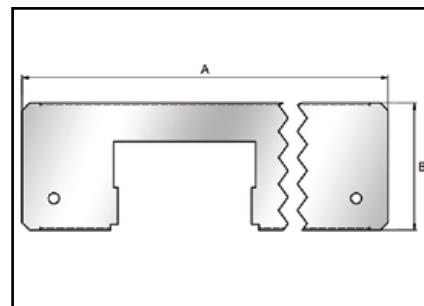
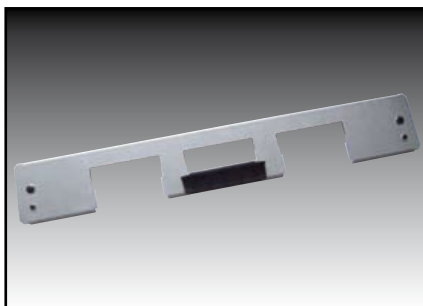
-  Locking plates: -40 – 125 °C, transient 140 °C
-  Floor sheeting: Sheet steel, galvanised
Locking plates: Polyamide 6.6
-  V0
-  IP 54 when installed correctly

The control cabinet floor sheeting can be installed in Rittal (type TS8) control cabinets. Up to 5 cable entry systems, type KDL/E 24 can be installed.

Locking plates, type VP24, are included with the control cabinet floor plates. These are required to lock the floor plates into place.

Non-required cut-outs can be closed with the BP/H 24 blanking plate.

- IP 54 when assembled correctly as a system (control cabinet + floor plates)
- Can be installed entirely retrospectively
- Earthing points (M6 and M8) available on both side



SBB...





Type	Order no.	For control cabinet width mm	Location spaces	Plate thickness mm	A mm	B mm	Pack qty.
SBB 460 - 2000	87821020	600	2x KDL/E 24 / BP/H	1.5	464.0	100.0	1
SBB 660 - 3000	87821040	800	3x KDL/E 24 / BP/H	1.5	664.0	100.0	1
SBB 860 - 5000	87821050	1000 (without central strut)	5x KDL/E 24 / BP/H	1.5	864.0	100.0	1
SBB 420 - 2000	87821010	1000 (with central strut)	2x KDL/E 24 / BP/H	1.5	424.0	100.0	1
SBB 520 - 3000	87821030	1200 (with central strut)	3x KDL/E 24 / BP/H	1.5	524.0	100.0	1
Replacement part: Locking plates							
VP24	87821090						5



Accessories for cable entry systems and cable entry plates

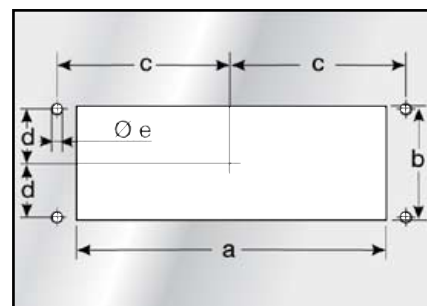
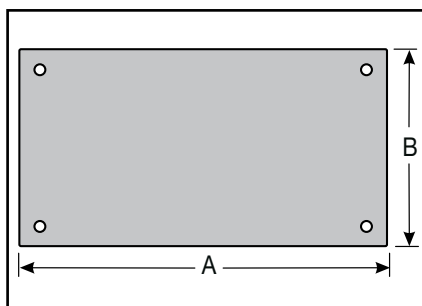
Blanking plate plastic, type BP



-  BP, BP/N: -40 – 125 °C, transient 140 °C
BP/H: -40 – 60 °C
-  BP, BP/N: Polyamide 6.6; BP/H: TPE;
NBR sealant
-  BP, BP/N: V0
BP/H: HB
-  BP: IP 54; BP/N: IP 65;
BP/H: IP 42

The BP blanking plates are suited for sealing cut-outs for 16- or 24-pole connectors. Unused cut-outs in areas like control cabinets or a KDP 24 AP/xx adapter plate can be closed off simply with the blanking plate.

- Integrated seal



BP

Type	Order no.	Colour	A mm	B mm	Installation height mm	a mm	b mm	c mm	d mm	e mm	Pack qty.
Reinforced version											
BP 16	87171620	black	116.0	58.0	8.0	86.0	36.0	51.5	16.0	5.5	10
BP 24	87171622	black	146.0	58.0	8.0	112.0	36.0	65.0	16.0	5.5	10
High model											
BP/N 24	87171624	black	146.0	58.0	15.5	112.0	36.0	65.0	16.0	5.5	1
Flexible version											
BP/H 24 *	87171626	black	146.0	48.0	4.5	112.0	36.0	65.0	16.0	5.5	1

* no authorisation for railways

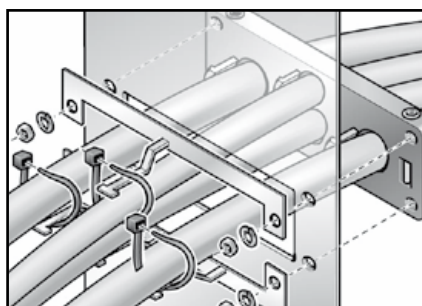
Discharge plate, type KDL-AB and KDL/N-AB



Stainless steel 1.4310

The KDL and KDL/E discharge plates are suited for discharging interference which may occur on cable sheaths.

The discharge plate should be installed on the inside of the control cabinet, directly at the fixing points of the KDL or KDL/E cable entry system.



KDL/AB...

Type	Order no.	No. Discharges	Suitable for	Pack qty.
KDL/AB 16/2-EMC	87252410	2	KDL 16/2; KDL/E 16/2	1
KDL/AB 16/4-EMC	87252412	4	KDL 16/4	1
KDL/AB 24/3-EMC	87252414	3	KDL 24/3	1
KDL/AB 24/5-EMC	87252416	5	KDL 24/5; KDL 2/10; KDL 3/15	1
KDL/N-AB 16/5-EMC OT	87252420	3	KDL/E 16/5 upper part	1
KDL/N-AB 16/5-EMC UT	87252422	2	KDL/E 16/5 lower part	1
KDL/N-AB 16/8-EMC	87252424	4	KDL/E 16/8 upper and lower part	1
KDL/N-AB 24/4-EMC OT	87252426	3	KDL/E 24/4 upper part	1
KDL/N-AB 24/4-EMC UT	87252428	1	KDL/E 24/4 lower part	1
KDL/N-AB 24/7-EMC OT	87252430	4	KDL/E 24/7 upper part	1
KDL/N-AB 24/7-EMC UT	87252432	3	KDL/E 24/7 lower part	1
KDL/N-AB 24/10-EMC OT	87252434	5	KDL/E 24/10 upper part	1
KDL/N-AB 24/10-EMC UT	87252436	5	KDL/E 24/10 lower part	1



Accessories for cable entry systems and cable entry plates

Blanking plate (metal version)



Plate: see article
NBR sealant

Blanking plate for closing off unused adapter positions and cut-outs. The stainless steel version is particularly suitable for application in the food and chemical areas. Integrated threaded bolts mean that no screws are visible from outside. Mounting set included in delivery.



KDP BP 90/144...

Type	Order no.	Colour	Plate material	Pack qty.
KDP BP 90/144 ALU	87663091	RAL 7035	AlMg3 (3.3535)	1
KDP BP 120/190 ALU	87663096	RAL 7035	AlMg3 (3.3535)	1
KDP BP 90/221 ALU	87663093	RAL 7035	AlMg3 (3.3535)	1
KDP BP 100/145 V4A	87663090	smoothed	V4A (1.4571)	1
KDP BP 105/155 ALU	87663092	RAL 7035	AlMg3 (3.3535)	1
KDP BP 105/155 V4A	87663094	smoothed	V4A (1.4571)	1

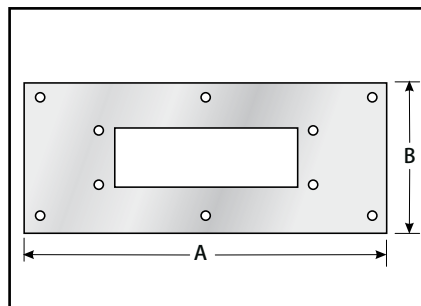
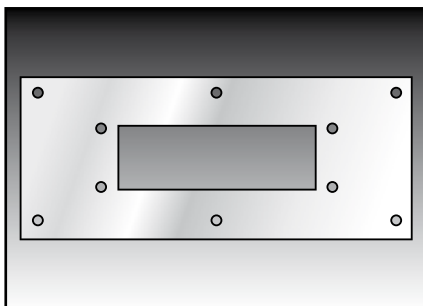
Adapter plate Rittal

RoHS
compliant



Stainless steel V2A (1.4301) and V4A (1.4571)

The Rittal adapter plates can be directly mounted into the prefabricated cut-outs from Rittal casings. They serve to retain various Murrplastik cable entry systems. Unused adapter spaces can be closed off using blanking plates. A blade terminal L6.3 is available for earthing the adapter plate. Adapter plate without sealing. The seal is part of the cabinet accessories.



KDP 24/AP/RI-KL/1

Type	Order no.	Colour	Location spaces	Rittal cutting	Cut outs code	Plate thickness mm	A mm	B mm	Pack qty.
with cut-outs 24-pin									
KDP 24/AP/RI-KL/1	87663073	smoothed	1x 24-pin	2	AP90C	2.0	90.0	221.0	1
KDP 24/AP/RI-BG/2	87663074	smoothed	2x 24-pin	BG 1558.510	AP92A	2.0	92.0	355.0	1
KDP 24/AP/RI-AE/2	87663072	smoothed	2x 24-pin	3	AP90D	2.0	90.0	330.0	1
KDP 24/AP/RI-BG/3+4	87663075	smoothed	2x 24-pin + 2x M20 + 2x M25	BG 1559.510	AP92B	2.0	92.0	555.0	1
KDP 24/AP/RI-AE/4	87663070	smoothed	4x 24-pin	4	AP149A	2.0	149.0	339.0	1
KDP 24/AP/RI-AE/6+2	87663071	smoothed	6x 24-pin + 2x M32	5	AP149B	2.0	149.0	534.0	1
for KDP metal									
KDP AP 149/100/2 V4A	87663080	smoothed	2x KDP 100/xx	4	AP149A	2.5	149.0	339.0	1
KDP AP 149/100/3 V4A	87663082	smoothed	3x KDP 100/xx	5	AP149B	2.5	149.0	534.0	1
KDP AP 149/105/3 St*	87663084	RAL 7035	3x KDP 105/xx	5	AP149B	2.5	149.0	534.0	1

*Material steel (1.1203)






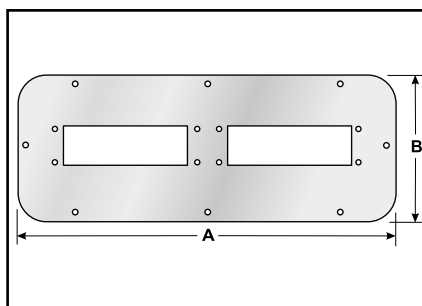
Accessories for cable entry systems and cable entry plates

Adapter plate Sarel



 Stainless steel 1.4301 (V2A)

Adapter plate can be fitted directly into the standard cut-outs of Sarel cabinets. They serve to retain various Murrplastik cable entry systems. Unused adapter positions can be closed off using blanking plates of type BP. A blade terminal L6.3 is available for earthing the adapter plate. Adapter plate without sealing. The seal is part of the cabinet accessories.




KDP 24/AP/SA/2+0

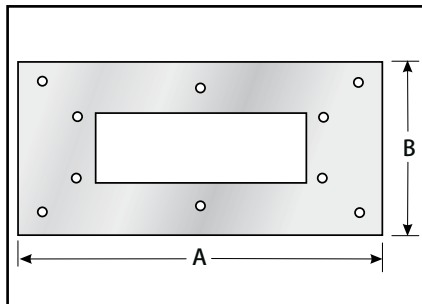
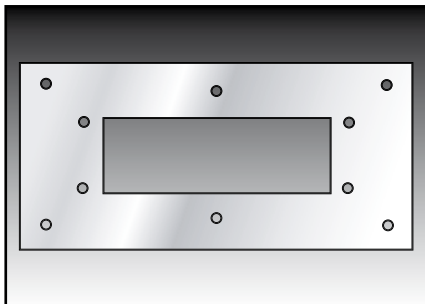
Type	Order no.	Colour	Location spaces	Sarel cutting	Cut outs code	Plate thickness mm	A mm	B mm	Pack qty.
with cut-outs 24-pin									
KDP 24/AP/SA/2+0	87663102	smoothed	2x 24-pin	515X4	AP130C	2.0	130.0	345.0	1
KDP 24/AP/SA/2+4	87663112	smoothed	2x 24-pin + 4x M32	515X5	AP130B	2.0	130.0	445.0	1
KDP 24/AP/SA/3+2	87663108	smoothed	2x 24-pin + 2x M32	515X6	AP130A	2.0	130.0	545.0	1
KDP 24/AP/SA/5+4	87663100	smoothed	5x 24-pin + 2x M25 + 2x M50	515X7	AP220A	2.0	220.0	495.0	1
for KDP metal									
KDP AP/SA/130/100/2	87663130	smoothed	2x KDP 100/xx	515X4	AP130C	2.5	130.0	345.0	1
KDP AP/SA/130/100/2+4	87663128	smoothed	2x KDP 100/xx + 4x M32	515X5	AP130B	2.5	130.0	445.0	1
KDP AP/SA/130/100/3+2	87663126	smoothed	3x KDP 100/xx + 2x M32	515X6	AP130A	2.5	130.0	545.0	1
for KDP/R									
KDP/R AP/SA-1	87663106	smoothed	6x M63	515X6	AP130A	2.0	130.0	545.0	1
KDP/R AP/SA-2	87663110	smoothed	5x M63	515X5	AP130B	2.0	130.0	445.0	1
KDP/R AP/SA-3	87663114	smoothed	3x M63	515X4	AP130C	2.0	130.0	345.0	1
KDP/R AP/SA-4	87663104	smoothed	2x M32 + 2x M63	515X3	AP130D	2.0	130.0	245.0	1

Adapter plate Lohmeier

RoHS
compliant

 Stainless steel 1.4301
(V2A)

The Lohmeier adapter plates can be directly mounted into the prefabricated cut-outs from Lohmeier casings. They serve to retain various Murrplastik cable entry systems. Unused adapter spaces can be closed off using blanking plates. A blade terminal L6.3 is available for earthing the adapter plate. Adapter plate comes with seal included.



KDP 24/AP/LO-BG/1

Type	Order no.	Colour	Location spaces	Lohmeier Cutting	Cut outs Code	Plate thickness mm	A mm	B mm	Pack qty.
with cut-outs 24-pin									
KDP 24/AP/LO-BG/1	87663078	smoothed	1x 24-pin	F200 Typ BG	AP92C	2.0	92.0	194.0	1
KDP 24/AP/LO-BG/2	87663077	smoothed	2x 24-pin	F300 Typ BG	AP92D	2.0	92.0	294.0	1



