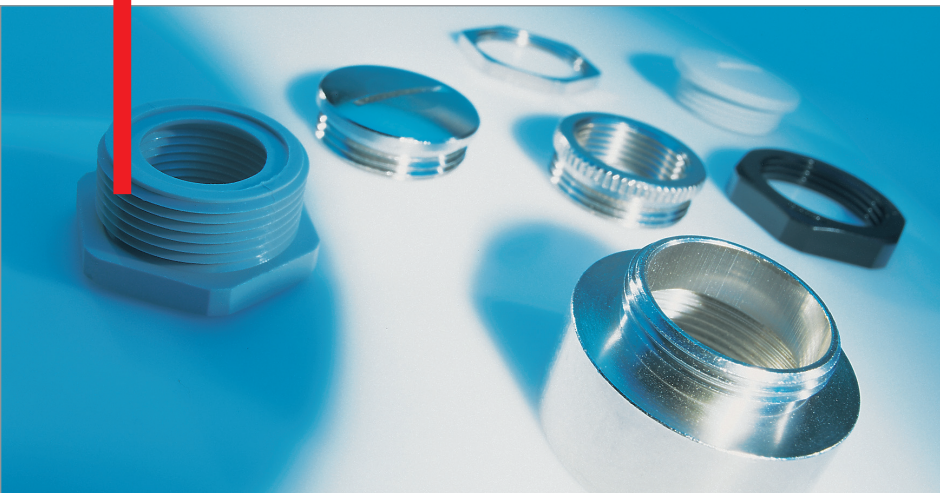
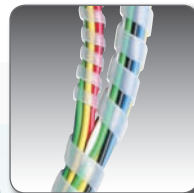


Accessories



Accessories product range



Type SB/SBF (spiral tape)

Spiral tapes are used to bundle cable harnesses efficiently and simply. The spiral tapes also protect the insulation of the wires.

Page 222



Type BN (fixing rivets)

Plastic expansion rivets for the quick installation of components, e.g. cable ducts.

Page 223



Type KB/KBM (cable ties)

Cable ties are a reliable method for the economic bundling and fastening of cables. Metal cable ties KBM for EMV solutions.

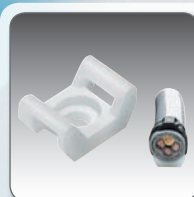
Page 224



Type BF (cable tie)

Cable tie with title block. For use with ink pens or permanent waterproof markers.

Page 226



Type SH (screwed holders)

The SH screw-down holder is used to fix individual cables using screw or rivets cost-effectively.

Page 227



Type OR-NBR (O-ring)

O-ring for sealing threaded connections resulting in higher protection ratings, e.g. on cable fittings.

Page 216



Type KH (screwed and adhesive holders)

Adhesive holder, plastic. The retention force can be increased by additional fastening with a screw.

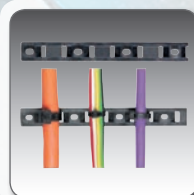
Page 228



Type ET (end sleeve)

The open end of a conduit can be closed using the end sleeve and protruding cables can be centred.

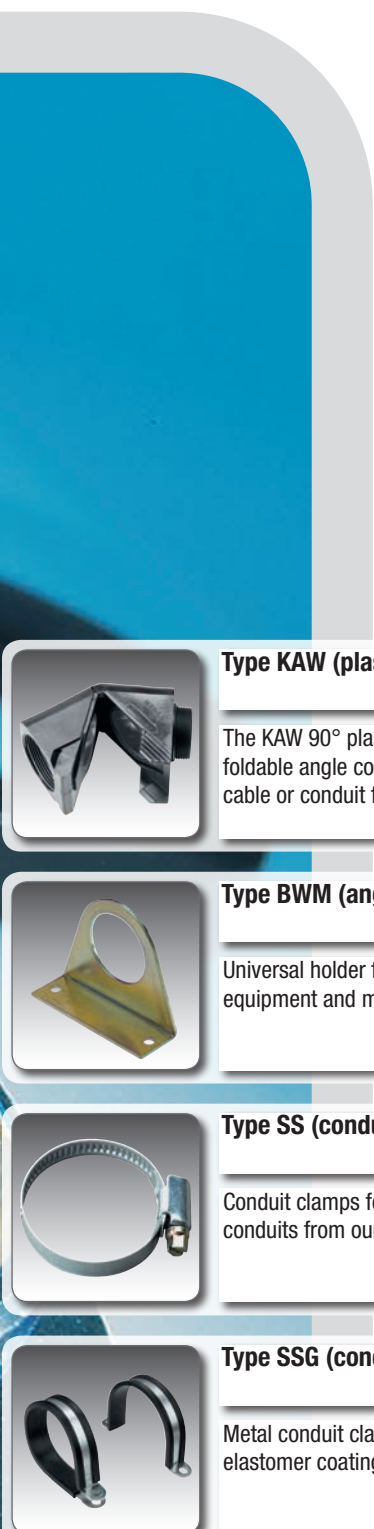

Page 217



Type KBL (cable tie rail)

Quick and easy fitting of cables. Cable ties may be pushed on if a rail is already fitted.

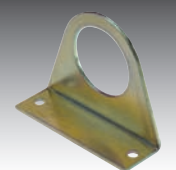
Page 229

Type KAW (plastic connection angle)

The KAW 90° plastic connection angle is a foldable angle connector. Combinable with cable or conduit fittings.


Page 218



Type BWM (angle bracket)

Universal holder for fastening fittings to equipment and machinery.


Page 219



Type SS (conduit clamp)

Conduit clamps for easy attachment of conduits from our conduit product range.

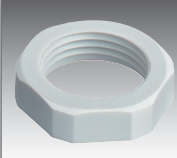
Page 220



Type SSG (conduit clamp)

Metal conduit clamp with halogen-free elastomer coating.


Page 221



Type KGM (plastic locknut)

Plastic locknut made from self-extinguishing polyamide with metric or Pg thread.


Page 204



Type GM (metal locknut)

Lock nut made of metal with metric or Pg thread.

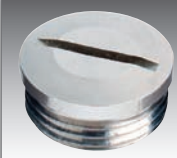
Page 206



Type BSTK (plastic dummy plug)

Dummy plug made of plastic with metric or Pg thread. IP 65 protection rating is achieved using additional O-ring type OR.

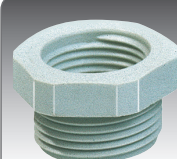
Page 207



Type BST (metal dummy plug)

Dummy plug made of metal with metric or Pg thread. IP 65 protection rating is achieved using additional O-ring type OR.


Page 209



Type KRR (plastic reducing bush)

Thread reducing bush made of plastic with metric or Pg thread.


Page 210



Type RR (metal reducing bush)

Thread reducing bush made of metal with metric or Pg thread. Knurled or hexagon version, depending on type.

Page 212

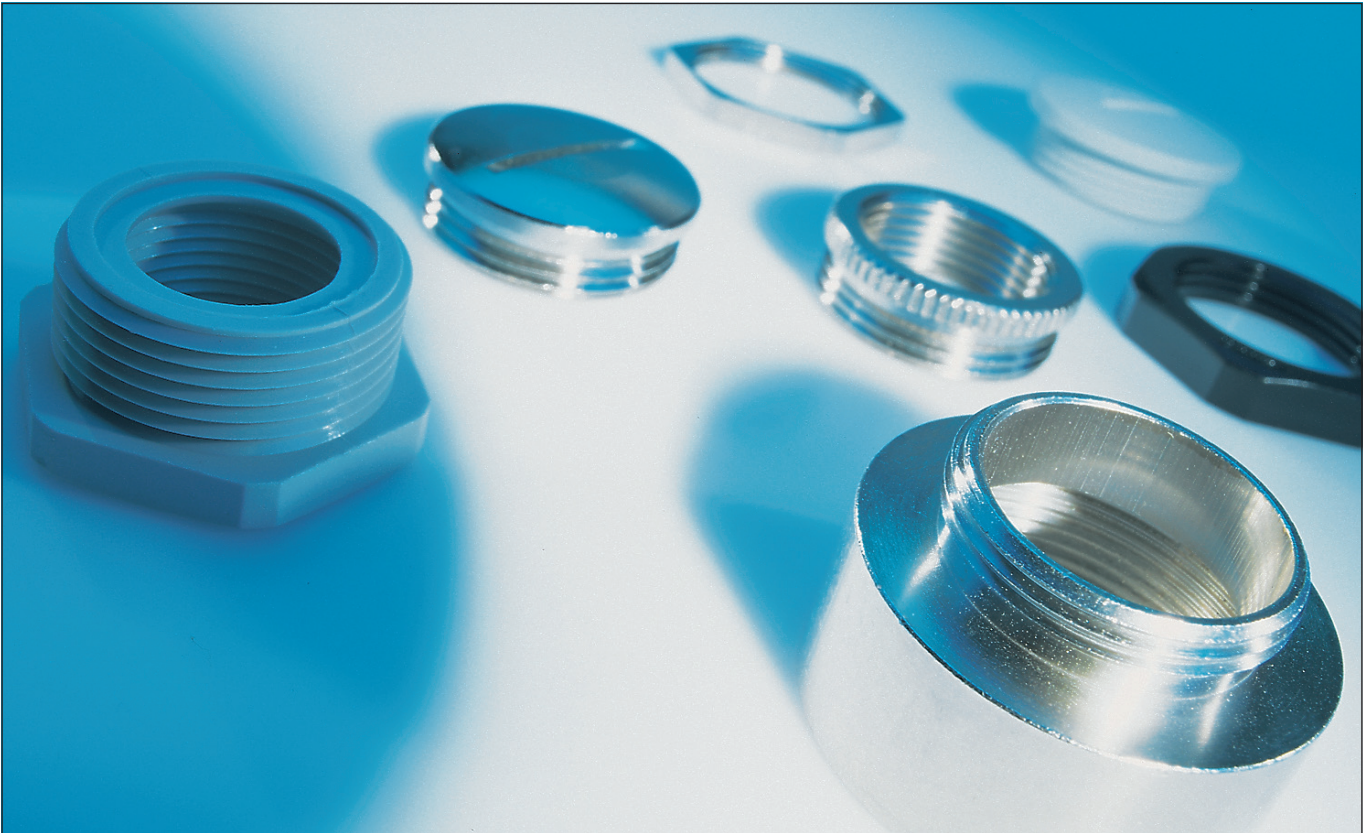


Type ER/EG (metal extension)

Thread extension made of metal with metric or Pg thread. Round or hexagonal version, depending on type.

Page 214

Advantages



Without accessories nothing works

A comprehensive range of accessories is available, including locknuts, reducing bushes, various fasteners, cable ties, etc.

Different materials, thread types and thread sizes ensure a wide range of uses for many applications.



- ✓ Large range of accessories
- ✓ Different materials
- ✓ Various thread types and sizes
- ✓ Universal
- ✓ Easy handling


Material data

	Material	Temperature area [°C]			Fire specifications UL94	Halogen-free	Phosphorous-free	Cadmium-free	Asbestos-free	Lead-free	Silicone-free	RoHS Compliant
		Min.	Max.	Short periods								
KGM	Polyamide PA6	-30	100	130	V0	✓	✓	✓	✓	✓	✓	✓
GM	Brass, nickel-plated											✓
BSTK	Polyamide PA6	-30	100	130	HB	✓	✓	✓	✓	✓	✓	✓
BST	Brass, nickel-plated											✓
KRR	Polyamide PA6	-30	100	130	HB	✓	✓	✓	✓	✓	✓	✓
RR	Brass, nickel-plated											✓
ER	Brass, nickel-plated											✓
EG	Brass, nickel-plated											✓
OR-NBR	NBR	-25	120			✓	✓	✓	✓	✓	✓	✓
ET	Thermoplastic elastomer	-40	120	150	HB	✓	✓	✓	✓	✓	✓	✓
KAW	Polyamide PA6 / NBR	-20	80		V0	✓	✓	✓	✓	✓	✓	✓
BWM	Galvanised sheet steel											✓
SS	Galvanised sheet steel											
SSG	Sheet steel, galvanised / EPDM											✓
SB	Polyethylene	-60	85			✓	✓	✓	✓	✓	✓	✓
SBF	Polyethylene	-60	85		V0	✓	✓	✓	✓	✓	✓	✓
BN	Hostalene	-40	80			✓	✓	✓	✓	✓	✓	✓
KB natural colour	Polyamide PA6.6	-25	85		V0	✓	✓	✓	✓	✓	✓	
KB black	Polyamide PA6.6 UV stabilized	-40	105		V0	✓	✓	✓	✓	✓	✓	
KKB	Polyamide PA6.6 UV stabilized	-40	105		V0	✓	✓	✓	✓	✓	✓	
KBM	Stainless steel 1.4301											
BF	Polyamide PA6.6	-25	85			✓	✓	✓	✓	✓	✓	
SH	Polyamide PA6.6	-40	85			✓	✓	✓	✓	✓	✓	
KH	Polyamide PA6.6	-40	85			✓	✓	✓	✓	✓	✓	
KBL	Polyamide PA6.6	-40	80		V0	✓	✓	✓	✓	✓	✓	✓

Type KGM (plastic lock nut)

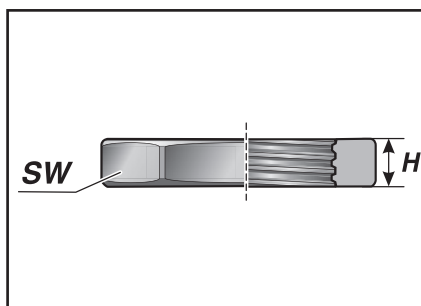
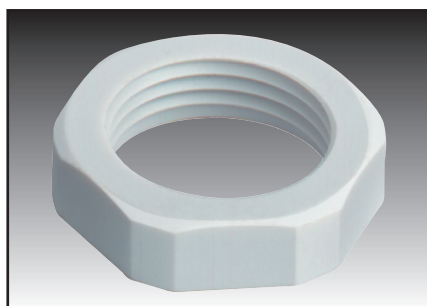
RoHS
compliant

 -30 to 100 °C
transient 130 °C

 Mod. polyamide

 V0

Plastic lock nut with self-extinguishing polyamide with metric or Pg thread.



KGM

Type	Order no.	Colour	Internal thread	H mm	SW mm	Pack qty.
Metric version						
KGM-M12x1.5	83727250	black	M12x1.5	5.0	17	100
KGM-M16x1.5	83727252	black	M16x1.5	5.0	22	100
KGM-M20x1.5	83727254	black	M20x1.5	6.0	26	100
KGM-M25x1.5	83727256	black	M25x1.5	6.0	32	100
KGM-M32x1.5	83727258	black	M32x1.5	7.0	41	100
KGM-M40x1.5	83727260	black	M40x1.5	7.0	50	50
KGM-M50x1.5	83727262	black	M50x1.5	8.0	60	50
KGM-M63x1.5	83727264	black	M63x1.5	8.0	75	50
KGM-M12x1.5	83727210	grey	M12x1.5	5.0	17	100
KGM-M16x1.5	83727212	grey	M16x1.5	5.0	22	100
KGM-M20x1.5	83727214	grey	M20x1.5	6.0	26	100
KGM-M25x1.5	83727216	grey	M25x1.5	6.0	32	100
KGM-M32x1.5	83727218	grey	M32x1.5	7.0	41	100
KGM-M40x1.5	83727220	grey	M40x1.5	7.0	50	50
KGM-M50x1.5	83727222	grey	M50x1.5	8.0	60	50
KGM-M63x1.5	83727224	grey	M63x1.5	8.0	75	50
Pg version						
KGM-Pg 07	83722250	black	Pg 07	5.0	19	100
KGM-Pg 09	83722252	black	Pg 09	5.0	22	100
KGM-Pg 11	83722254	black	Pg 11	5.0	24	100
KGM-Pg 13.5	83722256	black	Pg 13.5	6.0	27	100
KGM-Pg 16	83722258	black	Pg 16	6.0	30	100
KGM-Pg 21	83722260	black	Pg 21	6.5	36	100
KGM-Pg 29	83722262	black	Pg 29	7.0	46	50
KGM-Pg 36	83722264	black	Pg 36	7.5	60	25

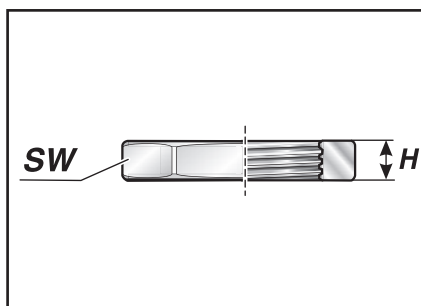


Type GM (metal lock nut)



Brass, nickel-plated

Lock nut made of metal with metric or Pg thread.



GM

Type	Order no.	Internal thread	H mm	SW mm	Pack qty.
Metric version					
GM-M12x1.5	83727010	M12x1.5	2.8	15	100
GM-M16x1.5	83727012	M16x1.5	2.8	19	100
GM-M20x1.5	83727014	M20x1.5	3.0	24	100
GM-M25x1.5	83727016	M25x1.5	3.5	30	100
GM-M32x1.5	83727018	M32x1.5	4.5	36	100
GM-M40x1.5	83727020	M40x1.5	5.0	46	50
GM-M50x1.5	83727022	M50x1.5	5.0	60	50
GM-M63x1.5	83727024	M63x1.5	6.0	70	50
Pg version					
GM-Pg 07	83722010	Pg 07	2.8	15	100
GM-Pg 09	83722012	Pg 09	2.8	18	100
GM-Pg 11	83722014	Pg 11	3.0	21	100
GM-Pg 13.5	83722016	Pg 13.5	3.0	23	100
GM-Pg 16	83722018	Pg 16	3.0	26	100
GM-Pg 21	83722020	Pg 21	3.5	32	100
GM-Pg 29	83722022	Pg 29	4.0	41	100
GM-Pg 36	83722024	Pg 36	5.0	51	50
GM-Pg 42	83722026	Pg 42	5.0	60	50
GM-Pg 48	83722028	Pg 48	5.5	64	50

Type BSTK (plastic dummy plug)

RoHS
compliant



-30 to 100 °C
transient 130 °C



Mod. polyamide

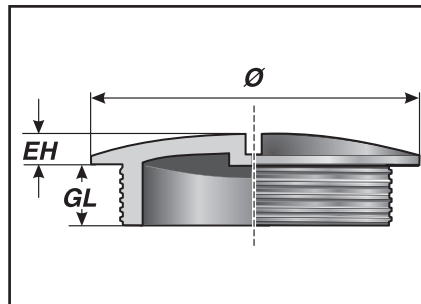


HB



IP 54
IP 65 with add. sealing ring type OR

Dummy plug made of plastic with metric or Pg thread.
IP 65 protection rating is achieved using additional O-ring type OR
(O-ring not included in delivery).



BSTK

Type	Order no.	Colour	Outside thread	EH mm	GL mm	Ø mm	Pack qty.
Metric version							
BSTK-M12x1.5	83726450	black	M12x1.5	3.0	6.0	15.0	100
BSTK-M16x1.5	83726452	black	M16x1.5	3.5	6.0	20.0	100
BSTK-M20x1.5	83726454	black	M20x1.5	4.0	6.0	24.0	100
BSTK-M25x1.5	83726456	black	M25x1.5	4.5	8.0	30.0	100
BSTK-M32x1.5	83726458	black	M32x1.5	4.5	8.0	37.0	100
BSTK-M40x1.5	83726460	black	M40x1.5	5.5	8.0	46.0	50
BSTK-M50x1.5	83726462	black	M50x1.5	5.5	10.0	56.0	50
BSTK-M63x1.5	83726464	black	M63x1.5	4.5	12.0	70.0	50
Grey version							
BSTK-M12x1.5	83726410	grey	M12x1.5	3.0	6.0	15.0	100
BSTK-M16x1.5	83726412	grey	M16x1.5	3.5	6.0	20.0	100
BSTK-M20x1.5	83726414	grey	M20x1.5	4.0	6.0	24.0	100
BSTK-M25x1.5	83726416	grey	M25x1.5	4.5	8.0	30.0	100
BSTK-M32x1.5	83726418	grey	M32x1.5	4.5	8.0	37.0	100
BSTK-M40x1.5	83726420	grey	M40x1.5	5.5	8.0	46.0	50
BSTK-M50x1.5	83726422	grey	M50x1.5	5.5	10.0	56.0	50
BSTK-M63x1.5	83726424	grey	M63x1.5	4.5	12.0	70.0	50
Pg version							
BSTK-Pg 07	83721410	grey	Pg 07	1.5	6.0	15.0	100
BSTK-Pg 09	83721412	grey	Pg 09	2.5	6.0	19.0	100
BSTK-Pg 11	83721414	grey	Pg 11	3.0	6.0	22.0	100
BSTK-Pg 13.5	83721416	grey	Pg 13.5	3.5	6.0	25.0	100
BSTK-Pg 16	83721418	grey	Pg 16	3.5	6.0	27.0	100
BSTK-Pg 21	83721420	grey	Pg 21	3.5	8.0	33.0	100
BSTK-Pg 29	83721422	grey	Pg 29	3.5	8.0	44.0	100
BSTK-Pg 36	83721424	grey	Pg 36	5.0	10.0	55.0	50



Type BST (metal dummy plug)

RoHS
compliant



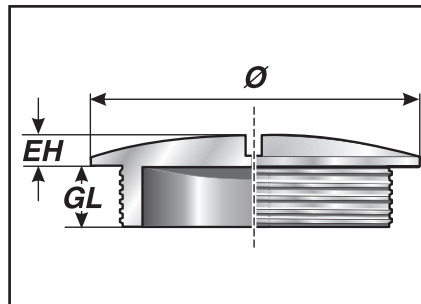
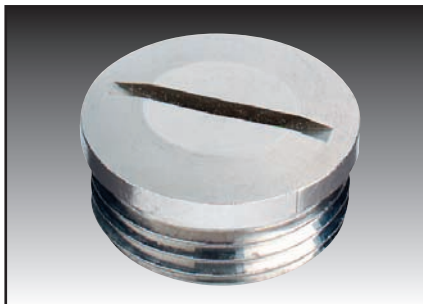
Brass, nickel-plated



IP 54

IP 65 with add. sealing ring type OR

Dummy plug made of metal with metric or Pg thread.
IP 65 protection rating is achieved using additional O-ring type OR
(O-ring not included in delivery).



BST


Type	Order no.	Outside thread	EH mm	GL mm	Ø mm	Pack qty.
Metric version						
BST-M12x1.5	83726210	M12x1.5	3.0	5.0	16.0	100
BST-M16x1.5	83726212	M16x1.5	3.0	6.0	20.0	100
BST-M20x1.5	83726214	M20x1.5	3.0	6.5	24.0	100
BST-M25x1.5	83726216	M25x1.5	3.5	7.0	28.0	100
BST-M32x1.5	83726218	M32x1.5	4.0	8.0	35.0	50
BST-M40x1.5	83726220	M40x1.5	4.0	8.0	45.0	50
BST-M50x1.5	83726222	M50x1.5	5.0	9.0	55.0	25
BST-M63x1.5	83726224	M63x1.5	6.0	10.0	68.0	10
Pg version						
BST-Pg 07	83721210	Pg 07	3.0	5.0	14.0	100
BST-Pg 09	83721212	Pg 09	3.0	6.0	17.0	100
BST-Pg 11	83721214	Pg 11	3.0	6.0	20.0	100
BST-Pg 13.5	83721216	Pg 13.5	3.0	6.5	22.0	100
BST-Pg 16	83721218	Pg 16	3.5	6.5	24.0	100
BST-Pg 21	83721220	Pg 21	4.0	7.0	30.0	100
BST-Pg 29	83721222	Pg 29	4.0	8.0	39.0	50
BST-Pg 36	83721224	Pg 36	6.0	9.0	50.0	25
BST-Pg 42	83721226	Pg 42	6.0	10.0	57.0	25
BST-Pg 48	83721228	Pg 48	6.0	10.0	64.0	10



Type KRR (plastic reducing bush)

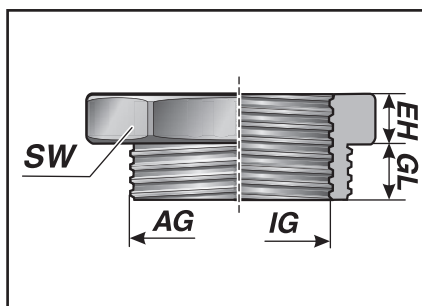
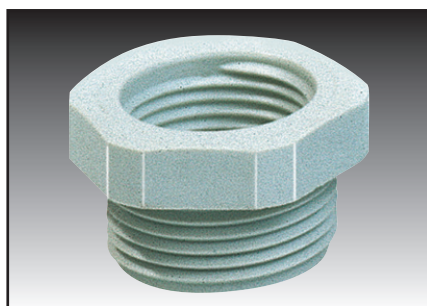
RoHS
compliant

 -30 to 100 °C
transient 130 °C

 Mod. polyamide

 HB

Thread reducing bush made of plastic with metric or Pg thread.
O-ring not included in delivery.



KRR

Type	Order no.	Colour	Outside thread AG	Internal thread IG	EH mm	GL mm	SW mm	Pack qty.
Metric/metric version								
KRR-M20/M12	83727450	black	M20x1.5	M12x1.5	4.0	8.0	24	100
KRR-M20/M16	83727452	black	M20x1.5	M16x1.5	4.0	8.0	24	100
KRR-M25/M12	83727454	black	M25x1.5	M12x1.5	6.0	8.0	30	100
KRR-M25/M16	83727456	black	M25x1.5	M16x1.5	6.0	8.0	30	100
KRR-M25/M20	83727458	black	M25x1.5	M20x1.5	6.0	8.0	30	100
KRR-M32/M12	83727460	black	M32x1.5	M12x1.5	6.0	10.0	36	50
KRR-M32/M16	83727462	black	M32x1.5	M16x1.5	6.0	10.0	36	50
KRR-M32/M20	83727464	black	M32x1.5	M20x1.5	6.0	10.0	36	50
KRR-M32/M25	83727466	black	M32x1.5	M25x1.5	6.0	10.0	36	50
KRR-M40/M16	83727468	black	M40x1.5	M16x1.5	6.0	10.0	46	50
KRR-M40/M20	83727470	black	M40x1.5	M20x1.5	6.0	10.0	46	50
KRR-M40/M25	83727472	black	M40x1.5	M25x1.5	6.0	10.0	46	50
KRR-M40/M32	83727474	black	M40x1.5	M32x1.5	6.0	10.0	46	50
KRR-M50/M20	83727476	black	M50x1.5	M20x1.5	6.0	12.0	55	25
KRR-M50/M25	83727478	black	M50x1.5	M25x1.5	6.0	12.0	55	25
KRR-M50/M32	83727480	black	M50x1.5	M32x1.5	6.0	12.0	55	25
KRR-M50/M40	83727482	black	M50x1.5	M40x1.5	6.0	12.0	55	25
KRR-M63/M25	83727484	black	M63x1.5	M25x1.5	6.0	12.0	68	25
KRR-M63/M32	83727486	black	M63x1.5	M32x1.5	6.0	12.0	68	25
KRR-M63/M40	83727488	black	M63x1.5	M40x1.5	6.0	12.0	68	25
KRR-M63/M50	83727490	black	M63x1.5	M50x1.5	6.0	12.0	68	25
KRR-M20/M12	83727400	grey	M20x1.5	M12x1.5	4.0	8.0	24	100
KRR-M20/M16	83727402	grey	M20x1.5	M16x1.5	4.0	8.0	24	100
KRR-M25/M12	83727404	grey	M25x1.5	M12x1.5	6.0	8.0	30	100
KRR-M25/M16	83727406	grey	M25x1.5	M16x1.5	6.0	8.0	30	100
KRR-M25/M20	83727408	grey	M25x1.5	M20x1.5	6.0	8.0	30	100

Type KRR (plastic reducing bush)

RoHS
compliant

Type	Order no.	Colour	Outside thread AG	Internal thread IG	EH mm	GL mm	SW mm	Pack qty.
KRR-M32/M12	83727410	grey	M32x1.5	M12x1.5	6.0	10.0	36	50
KRR-M32/M16	83727412	grey	M32x1.5	M16x1.5	6.0	10.0	36	50
KRR-M32/M20	83727414	grey	M32x1.5	M20x1.5	6.0	10.0	36	50
KRR-M32/M25	83727416	grey	M32x1.5	M25x1.5	6.0	10.0	36	50
KRR-M40/M16	83727418	grey	M40x1.5	M16x1.5	6.0	10.0	46	50
KRR-M40/M20	83727420	grey	M40x1.5	M20x1.5	6.0	10.0	46	50
KRR-M40/M25	83727422	grey	M40x1.5	M25x1.5	6.0	10.0	46	50
KRR-M40/M32	83727424	grey	M40x1.5	M32x1.5	6.0	10.0	46	50
KRR-M50/M20	83727426	grey	M50x1.5	M20x1.5	6.0	12.0	55	25
KRR-M50/M25	83727428	grey	M50x1.5	M25x1.5	6.0	12.0	55	25
KRR-M50/M32	83727430	grey	M50x1.5	M32x1.5	6.0	12.0	55	25
KRR-M50/M40	83727432	grey	M50x1.5	M40x1.5	6.0	12.0	55	25
KRR-M63/M25	83727434	grey	M63x1.5	M25x1.5	6.0	12.0	68	25
KRR-M63/M32	83727436	grey	M63x1.5	M32x1.5	6.0	12.0	68	25
KRR-M63/M40	83727438	grey	M63x1.5	M40x1.5	6.0	12.0	68	25
KRR-M63/M50	83727440	grey	M63x1.5	M50x1.5	6.0	12.0	68	25
Pg/Pg version								
KRR-Pg 11/07	83722410	grey	Pg 11	Pg 07	6.0	8.0	22	100
KRR-Pg 11/09	83722412	grey	Pg 11	Pg 09	15.0	8.0	22	100
KRR-Pg 13.5/07	83722414	grey	Pg 13.5	Pg 07	6.0	9.0	24	100
KRR-Pg 13/09	83722416	grey	Pg 13.5	Pg 09	6.0	9.0	24	100
KRR-Pg 13/11	83722420	grey	Pg 13.5	Pg 11	15.0	9.0	24	100
KRR-Pg 16/09	83722418	grey	Pg 16	Pg 09	6.0	10.0	27	100
KRR-Pg 16/11	83722422	grey	Pg 16	Pg 11	6.0	10.0	27	100
KRR-Pg 16/13.5	83722424	grey	Pg 16	Pg 13.5	17.0	10.0	27	100
KRR-Pg 21/11	83722426	grey	Pg 21	Pg 11	5.0	11.0	32	100
KRR-Pg 21/13.5	83722428	grey	Pg 21	Pg 13.5	5.0	11.0	32	100
KRR-Pg 21/16	83722430	grey	Pg 21	Pg 16	5.0	11.0	32	100
KRR-Pg 29/13	83722432	grey	Pg 29	Pg 13	6.0	11.0	40	50
KRR-Pg 29/16	83722434	grey	Pg 29	Pg 16	6.0	11.0	40	50
KRR-Pg 29/21	83722436	grey	Pg 29	Pg 21	6.0	11.0	40	50
KRR-Pg 36/16	83722438	grey	Pg 36	Pg 16	6.0	13.0	50	50
KRR-Pg 36/21	83722440	grey	Pg 36	Pg 21	6.0	13.0	50	50
KRR-Pg 36/29	83722442	grey	Pg 36	Pg 29	6.0	18.0	50	50
KRR-Pg 42/21	83722444	grey	Pg 42	Pg 21	6.0	18.0	55	25
KRR-Pg 42/29	83722446	grey	Pg 42	Pg 29	6.0	18.0	55	25
KRR-Pg 42/36	83722448	grey	Pg 42	Pg 36	6.0	18.0	55	25
KRR-Pg 48/29	83722450	grey	Pg 48	Pg 29	6.0	15.0	60	25
KRR-Pg 48/36	83722452	grey	Pg 48	Pg 36	7.0	16.0	60	25



Type RR (metal reducing bush)

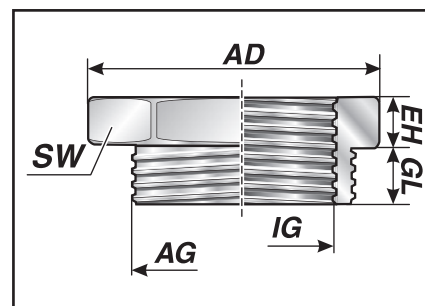
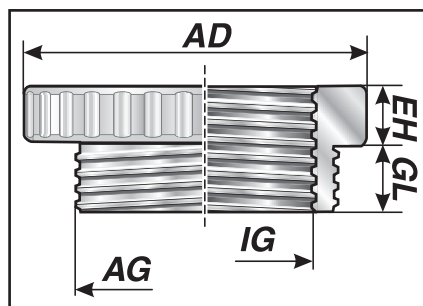
RoHS
compliant



Brass, nickel-plated

Thread reducing bush made of metal with metric or Pg thread.
Knurled or hexagon version, depending on type.

- Metric/metric
- Metric/Pg
- Pg/Pg



RR

Type	Order no.	Outside thread AG	Internal thread IG	EH mm	GL mm	AD mm	SW mm	Pack qty.
Metric/metric version (without O-ring)								
RR-M16/M12	83727610	M16x1.5	M12x1.5	2.5	6.0	20.0	-	100
RR-M20/M12	83727612	M20x1.5	M12x1.5	2.5	6.5	24.0	-	100
RR-M20/M16	83727614	M20x1.5	M16x1.5	2.5	6.5	24.0	-	100
RR-M25/M16	83727616	M25x1.5	M16x1.5	3.0	7.0	30.0	-	100
RR-M25/M20	83727618	M25x1.5	M20x1.5	3.0	7.0	30.0	-	100
RR-M32/M20	83727620	M32x1.5	M20x1.5	3.5	8.0	39.0	-	50
RR-M32/M25	83727622	M32x1.5	M25x1.5	3.5	8.0	39.0	-	50
RR-M40/M25	83727624	M40x1.5	M25x1.5	3.5	9.0	50.0	-	25
RR-M40/M32	83727626	M40x1.5	M32x1.5	3.5	9.0	50.0	-	25
RR-M50/M32	83727628	M50x1.5	M32x1.5	4.0	10.0	57.0	-	25
RR-M50/M40	83727630	M50x1.5	M40x1.5	4.0	10.0	57.0	-	25
RR-M63/M40	83727632	M63x1.5	M40x1.5	4.0	10.0	64.0	-	10
RR-M63/M50	83727634	M63x1.5	M50x1.5	4.0	10.0	64.0	-	10
Metric/Pg version (with O-ring on external thread)								
RR-M16/Pg7	83727810	M16x1.5	Pg 7	3.0	5.0	-	17	100
RR-M20/Pg9	83727812	M20x1.5	Pg 9	3.0	6.0	-	22	100
RR-M25/Pg9	83727814	M25x1.5	Pg 9	3.0	7.0	-	27	100
RR-M25/Pg11	83727816	M25x1.5	Pg 11	3.0	7.0	-	27	100
RR-M25/Pg13.5	83727818	M25x1.5	Pg 13.5	3.0	7.0	-	27	100
RR-M32/Pg13.5	83727820	M32x1.5	Pg 13.5	3.0	8.0	-	34	50
RR-M32/Pg16	83727822	M32x1.5	Pg 16	3.0	8.0	-	34	50
RR-M32/Pg21	83727824	M32x1.5	Pg 21	3.0	8.0	-	34	50
RR-M40/Pg16	83727826	M40x1.5	Pg 16	4.0	8.0	-	43	25
RR-M40/Pg21	83727828	M40x1.5	Pg 21	4.0	8.0	-	43	25
RR-M40/Pg29	83727830	M40x1.5	Pg 29	4.0	8.0	-	43	25
RR-M50/Pg21	83727832	M50x1.5	Pg 21	4.0	9.0	-	55	25

Type RR (metal reducing bush)

Type	Order no.	Outside thread AG	Internal thread IG	EH mm	GL mm	AD mm	SW mm	Pack qty.
RR-M50/Pg29	83727834	M50x1.5	Pg 29	4.0	9.0	-	55	25
RR-M50/Pg36	83727836	M50x1.5	Pg 36	4.0	9.0	-	55	25
RR-M63/Pg29	83727838	M63x1.5	Pg 29	4.0	10.0	-	65	10
RR-M63/Pg36	83727840	M63x1.5	Pg 36	4.0	10.0	-	65	10
RR-M63/Pg42	83727842	M63x1.5	Pg 42	4.0	10.0	-	65	10
Pg/Pg version (without O-ring)								
RR-Pg 09/07	83722610	Pg 09	Pg 07	2.5	6.0	17.0	-	100
RR-Pg 11/07	83722612	Pg 11	Pg 07	2.5	6.0	-	20	100
RR-Pg 11/09	83722614	Pg 11	Pg 09	2.5	6.0	20.0	-	100
RR-Pg 13.5/09	83722616	Pg 13.5	Pg 09	2.5	6.5	22.0	-	100
RR-Pg 13.5/11	83722618	Pg 13.5	Pg 11	2.5	6.5	22.0	-	100
RR-Pg 16/09	83722620	Pg 16	Pg 09	3.0	6.5	24.0	-	100
RR-Pg 16/11	83722622	Pg 16	Pg 11	3.0	6.5	24.0	-	100
RR-Pg 16/13.5	83722624	Pg 16	Pg 13.5	3.0	6.5	24.0	-	100
RR-Pg 21/11	83722626	Pg 21	Pg 11	3.0	7.0	30.0	-	50
RR-Pg 21/13.5	83722628	Pg 21	Pg 13.5	3.0	7.0	30.0	-	50
RR-Pg 21/16	83722630	Pg 21	Pg 16	3.0	7.0	30.0	-	50
RR-Pg 29/21	83722632	Pg 29	Pg 21	3.5	8.0	39.0	-	25
RR-Pg 36/29	83722634	Pg 36	Pg 29	3.5	9.0	50.0	-	25
RR-Pg 42/36	83722636	Pg 42	Pg 36	4.0	10.0	57.0	-	25
RR-Pg 48/36	83722638	Pg 48	Pg 36	4.0	10.0	64.0	-	25



Type ER/EG (metal extension)

RoHS
compliant



Brass, nickel-plated

Thread extension made of metal with metric or Pg thread.

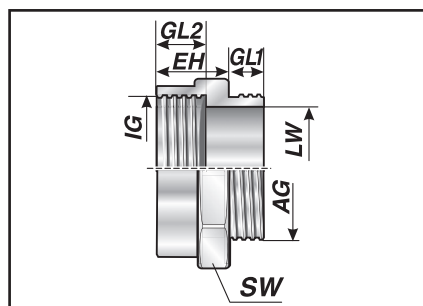
Round or hexagon version, depending on type.

Some with O-ring on external thread.

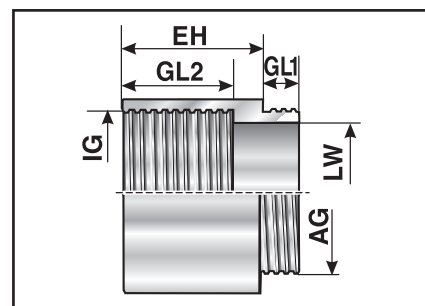
- Metric/metric
- Metric/Pg
- Pg/Pg



ER



ER



EG

Type	Order no.	Outside thread AG	Internal thread IG	EH mm	GL 1 mm	GL 2 mm	Ø mm	SW mm	Pack qty.
Metric/metric version									
ER-M12/M16	83728010	M12x1.5	M16x1.5	10.0	5.0	9.0	-	18	100
ER-M16/M20	83728012	M16x1.5	M20x1.5	10.5	5.0	9.5	-	22	100
ER-M20/M25	83728014	M20x1.5	M25x1.5	11.5	6.0	10.5	-	27	50
ER-M25/M32	83728016	M25x1.5	M32x1.5	12.5	7.0	11.0	-	34	50
ER-M32/M40	83728018	M32x1.5	M40x1.5	14.5	8.0	13.0	-	42	10
ER-M40/M50	83728020	M40x1.5	M50x1.5	19.5	8.0	18.0	-	52	10
ER-M50/M63	83728022	M50x1.5	M63x1.5	22.0	9.0	20.0	-	65	10
Metric/Pg version									
EG-M12/Pg 09	83726810	M12x1.5	Pg 09	10.0	5.0	9.0	17.0	-	100
EG-M16/Pg 11	83726812	M16x1.5	Pg 11	10.5	5.0	9.5	20.0	-	100
EG-M20/Pg 16 *	83726814	M20x1.5	Pg 16	12.5	6.0	10.5	24.0	-	100
EG-M25/Pg 21	83726816	M25x1.5	Pg 21	14.5	7.0	11.0	30.0	-	100
EG-M32/Pg 29 *	83726818	M32x1.5	Pg 29	22.0	8.0	13.0	39.0	-	50
EG-M40/Pg 36 *	83726820	M40x1.5	Pg 36	19.5	8.0	18.0	50.0	-	50
EG-M50/Pg 42 *	83726822	M50x1.5	Pg 42	22.0	9.0	20.0	57.0	-	25
EG-M50/Pg 48 *	83726824	M50x1.5	Pg 48	23.0	9.0	20.0	64.0	-	25
Pg/Pg version									
EG-Pg 07 / 09	83721810	Pg 07	Pg 09	10.0	5.0	9.0	17.0	-	100
EG-Pg 09/11	83721812	Pg 09	Pg 11	10.5	6.0	9.5	20.0	-	100
EG-Pg 09/13.5	83721814	Pg 09	Pg 13.5	10.5	6.0	10.5	22.0	-	100
EG-Pg 11/13.5	83721816	Pg 11	Pg 13.5	11.5	6.0	10.5	22.0	-	100
EG-Pg 11/16	83721818	Pg 11	Pg 16	11.5	6.0	11.0	24.0	-	100
EG-Pg 13.5/16	83721820	Pg 13.5	Pg 16	13.5	6.5	11.0	24.0	-	100
EG-Pg 16/21	83721822	Pg 16	Pg 21	15.5	6.5	13.0	30.0	-	100
EG-Pg 21/29	83721824	Pg 21	Pg 29	16.0	7.0	14.5	39.0	-	50

Type ER/EG (metal extension)

RoHS
compliant

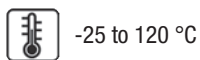
Type	Order no.	Outside thread AG	Internal thread IG	EH mm	GL 1 mm	GL 2 mm	Ø mm	SW mm	Pack qty.
EG-Pg 29/36	83721826	Pg 29	Pg 36	19.5	8.0	18.0	50.0	-	25
EG-Pg 36/42	83721828	Pg 36	Pg 42	22.0	9.0	20.0	50.0	-	10
EG-Pg 42 / 48	83721830	Pg 42	Pg 48	23.0	10.0	21.0	64.0	-	10
Pg/metric version									
ER-Pg 07 / M12	83728210	Pg 07	M12x1.5	10.0	5.0	7.5	-	14	100
ER-Pg 09/M16	83728212	Pg 09	M16x1.5	10.0	6.0	7.5	-	19	100
ER-Pg 11/M16	83728214	Pg 11	M16x1.5	10.0	6.0	7.5	-	22	100
ER-Pg 13.5/M16	83728216	Pg13.5	M20x1.5	11.0	6.5	8.5	-	24	100
ER-Pg 16/M16	83728218	Pg 16	M20x1.5	11.0	6.5	8.5	-	27	100
ER-Pg 16/M25	83728220	Pg 16	M25x1.5	12.0	6.5	9.5	-	30	100
ER-Pg 21/M25	83728222	Pg 21	M25x1.5	12.0	7.0	9.5	-	32	100
ER-Pg 21/M32	83728224	Pg 21	M32x1.5	13.0	7.0	10.5	-	36	100
ER-Pg 29/M40	83728226	Pg 29	M40x1.5	13.0	8.0	11.0	-	43	50
ER-Pg 36/M50	83728228	Pg 36	M50x1.5	14.0	9.0	11.5	-	55	25

* with O-ring on external thread





Type OR-NBR (O-ring)



-25 to 120 °C

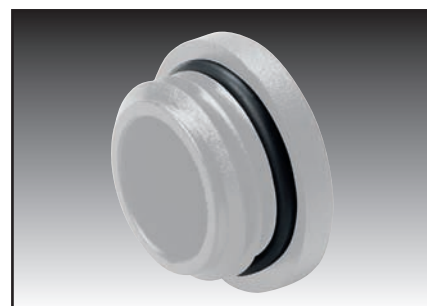
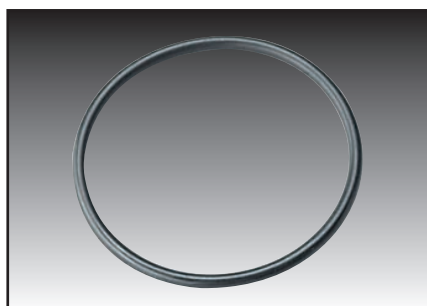


NBR

O-ring for sealing threaded connections resulting in higher protection ratings, e.g. on cable fittings.

For thread type:

- Metric
- Pg
- NPT




OR-NBR

Type	Order no.	Suitable for metric	Suitable for Pg	Suitable for NPT	Pack qty.
OR-NBR 10x1.5	83481210	M12x1.5	Pg 07	-	100
OR-NBR 12x1.5	83481212	M16x1.5	Pg 09	-	100
OR-NBR 13x2	83481214	-	-	3/8" NPT	100
OR-NBR 16x1.5	83481216	-	Pg 11	-	100
OR-NBR 17x1.8	83481218	M20x1.5	Pg 13.5	-	100
OR-NBR 18x1.5	83481220	-	Pg 16	-	100
OR-NBR 19x1.8	83481222	-	-	1/2" NPT	100
OR-NBR 22x2	83481224	M25x1.5	-	3/4" NPT	100
OR-NBR 26x2	83481226	-	Pg 21	-	100
OR-NBR 29x2	83481228	M32x1.5	-	1" NPT	100
OR-NBR 33x2	83481230	-	Pg 29	-	50
OR-NBR 35x2	83481232	M40x1.5	-	-	50
OR-NBR 43x2	83481234	M50x1.5	Pg 36	-	50
OR-NBR 50x2	83481236	-	Pg 42	-	50
OR-NBR 55x2	83481238	M63x1.5	Pg 48	-	50

Type ET (end sleeve)

RoHS
compliant

 -40 to 120 °C
transient 150 °C

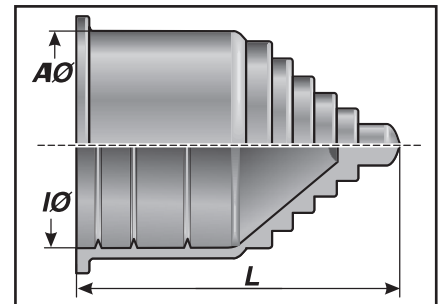
 Thermoplastic elastomer

 HB

 IP 67

The open end of a conduit can be closed using the end sleeve and protruding cables can be centred.

- Opening of end sleeve variable (depending on the cable diameter used)
- Easy assembly
- Fixing of end sleeve to the cable protection conduit using ribs running round the inside



ET

Type	Order no.	Colour	Suitable for Murrflex	L mm	A Ø mm	I Ø mm	Cable Ø mm	Pack qty.
ET 07	83723450	black	Pg6	29.0	13.0	10.0	1.0-8.0	50
ET 09	83723452	black	M10/P7; M12/P9	32.5	16.0	13.0	1.0-10.0	50
ET 11	83723454	black	M16/P11	36.5	19.0	15.8	4.0-12.0	50
ET 16	83723456	black	M20/P16(S)	37.5	25.0	21.2	6.0-16.5	50
ET 21	83723458	black	M25/P21(S)	40.2	32.0	28.5	6.0-23.0	25
ET 29	83723460	black	M32/P29(S)	44.2	39.0	34.5	6.0-29.0	25
ET 36	83723462	black	M40/P36(S)	46.0	46.0	42.5	10.0-37.0	25
ET 48	83723464	black	M50/P48(S)	52.0	59.0	54.5	10.0-47.0	10
ET 07	83723410	grey	Pg6	29.0	13.0	10.0	1.0-8.0	50
ET 09	83723412	grey	M10/P7; M12/P9	32.5	16.0	13.0	1.0-10.0	50
ET 11	83723414	grey	M16/P11	36.5	19.0	15.8	4.0-12.0	50
ET 16	83723416	grey	M20/P16(S)	37.5	25.0	21.2	6.0-16.5	50
ET 21	83723418	grey	M25/P21(S)	40.2	32.0	28.5	6.0-23.0	25
ET 29	83723420	grey	M32/P29(S)	44.2	39.0	34.5	6.0-29.0	25
ET 36	83723422	grey	M40/P36(S)	46.0	46.0	42.5	10.0-37.0	25
ET 48	83723424	grey	M50/P48(S)	52.0	59.0	54.5	10.0-47.0	10



Type KAW (plastic connection angle)

RoHS
compliant



-20 to 80 °C



Mod. polyamide
NBR



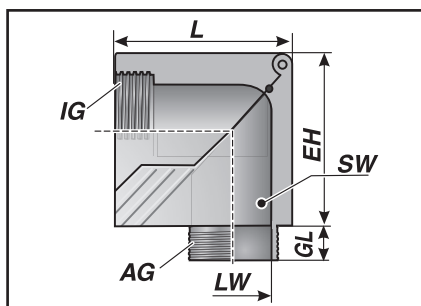
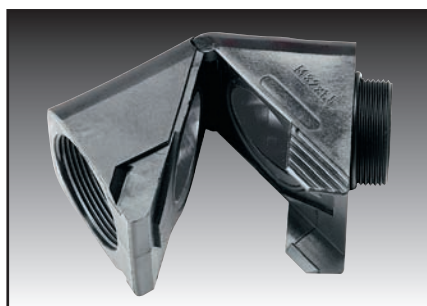
V0



IP 68

The KAW 90° plastic connection angle is a foldable angle connector. It can be combined freely with cable or conduit fittings.

- Easy cable insertion
- High protection rating IP 68
- Easy assembly
- Folds open
- Wide range of connection options
- Includes seal on connecting thread



KAW

Type	Order no.	Colour	AG	IG	EH mm	GL mm	L mm	LW mm	SW mm	Pack qty.
Metric version										
KAW-M 16x1.5	83661650	black	M 16x1.5	Pg 09	23.0	8.0	28.5	10.0	19	25
KAW-M 20x1.5	83661652	black	M 20x1.5	Pg 13.5	30.5	9.0	35.0	13.5	24	25
KAW-M 25x1.5	83661654	black	M 25x1.5	Pg 21	40.0	11.0	49.0	19.5	33	25
KAW-M 32x1.5	83661656	black	M 32x1.5	Pg 29	51.5	11.0	60.0	27.0	42	10
KAW-M 16x1.5	83661610	grey	M 16x1.5	Pg 09	23.0	8.0	28.5	10.0	19	25
KAW-M 20x1.5	83661612	grey	M 20x1.5	Pg 13.5	30.5	9.0	35.0	13.5	24	25
KAW-M 25x1.5	83661614	grey	M 25x1.5	Pg 21	40.0	11.0	49.0	19.5	33	25
KAW-M 32x1.5	83661616	grey	M 32x1.5	Pg 29	51.5	11.0	60.0	27.0	42	10
Pg version										
KAW-Pg 09	83661050	black	Pg 09	Pg 09	23.0	8.0	28.5	10.0	19	25
KAW-Pg 11	83661052	black	Pg 11	Pg 11	27.0	8.0	31.5	12.0	22	25
KAW-Pg 13.5	83661054	black	Pg 13.5	Pg 13.5	30.5	9.0	35.0	13.5	24	25
KAW-Pg 16	83661056	black	Pg 16	Pg 16	32.5	10.0	37.5	16.0	27	25
KAW-Pg 21	83661058	black	Pg 21	Pg 21	40.0	11.0	49.0	20.0	33	25
KAW-Pg 29	83661060	black	Pg 29	Pg 29	51.5	11.0	60.0	27.0	42	10
KAW-Pg 09	83661012	grey	Pg 09	Pg 09	23.0	8.0	28.5	10.0	19	25
KAW-Pg 11	83661014	grey	Pg 11	Pg 11	27.0	8.0	31.5	12.0	22	25
KAW-Pg 13.5	83661016	grey	Pg 13.5	Pg 13.5	30.5	9.0	35.0	13.5	24	25
KAW-Pg 16	83661018	grey	Pg 16	Pg 16	32.5	10.0	37.5	16.0	27	25
KAW-Pg 21	83661020	grey	Pg 21	Pg 21	40.0	11.0	49.0	20.0	33	25
KAW-Pg 29	83661022	grey	Pg 29	Pg 29	51.5	11.0	60.0	27.0	42	10

Type BWM (angle bracket)

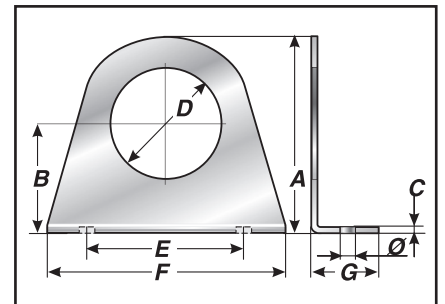
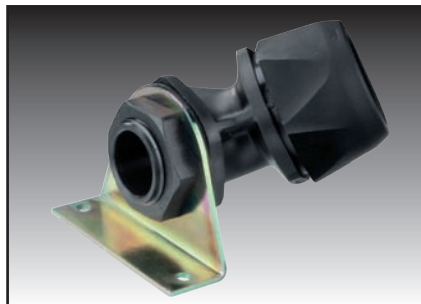
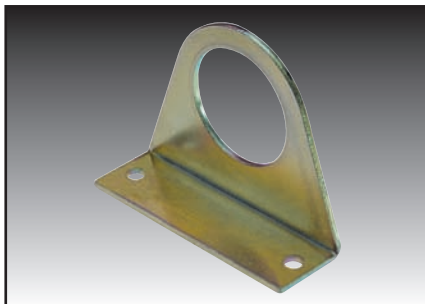
RoHS compliant



Galvanised sheet steel

Universal holder for fastening fittings to equipment and machinery.

- Quick and easy fastening
- For Pg and metric fittings
- Fittings secured with lock nut



BWM

Type	Order no.	Suitable for Thread	A mm	B mm	C mm	D mm	E mm	F mm	G mm	Ø mm	Pack qty.
BWM-M12x1.5	83721660	M12x1.5	31.5	19.0	1.5	12.4	25.0	35.0	12.0	4.0	25
BWM-M16x1.5	83721662	M16x1.5	31.5	19.0	1.5	16.4	25.0	35.0	12.0	4.0	25
BWM-M20x1.5	83721664	M20x1.5	37.5	22.0	2.0	20.5	40.0	50.0	20.0	9.0	25
BWM-M25x1.5	83721666	M25x1.5	47.5	27.3	2.0	25.5	50.0	60.0	20.0	9.0	25
BWM-M32x1.5	83721668	M32x1.5	57.5	32.0	2.0	32.5	60.0	70.0	20.0	9.0	25
BWM-M40x1.5	83721670	M40x1.5	68.5	37.5	2.0	40.5	70.0	80.0	20.0	9.0	25
BWM-M50x1.5	83721672	M50x1.5	81.0	44.0	2.0	51.0	80.0	90.0	20.0	9.0	25
BWM 09	83721610	Pg 09	31.5	22.0	1.5	15.3	25.0	35.0	12.0	4.0	25
BWM 11	83721612	Pg 11	31.5	19.0	1.5	18.8	25.0	35.0	12.0	4.0	25
BWM 16	83721614	Pg 16	38.0	22.0	2.0	23.0	40.0	50.0	20.0	9.0	25
BWM 21	83721616	Pg 21	47.5	27.3	2.0	28.5	50.0	60.0	20.0	9.0	25
BWM 29	83721618	Pg 29	57.3	32.0	2.0	37.5	60.0	70.0	20.0	9.0	25
BWM 36	83721620	Pg 36	67.8	37.5	2.0	47.5	70.0	80.0	20.0	9.0	25
BWM 48	83721622	Pg 48	80.5	44.0	2.0	60.0	80.0	90.0	20.0	9.0	25



Type SS (conduit clamp)



Galvanised sheet steel

Conduit clamps for easy attachment of conduits from our conduit product range.



SS

Type	Order no.	Type	Clamping range in mm	Width in mm	Pack qty.
SS 15	83721010		8-16	9	100
SS 19	83721012		12-20	9	100
SS 26	83721014		16-27	9	100
SS 32	83721016		22-32	9	100
SS 38	83721018		25-40	9	50
SS 47	83721020		35-50	12	50
SS 57	83721022		40-60	12	50
SS 70	83721024		50-70	12	25
SS 78	83721026		78-85	17	25

Type SSG (conduit clamp)

RoHS compliant

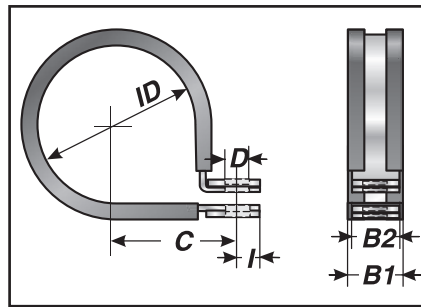
 Galvanised sheet steel
 EPDM

Metal conduit clamp with halogen-free elastomer coating.

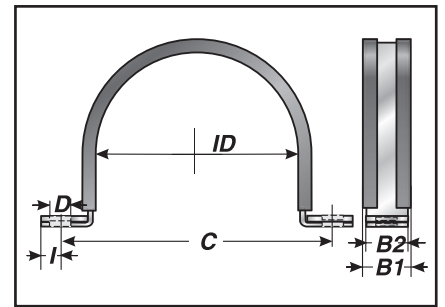
- Quick and easy assembly
- For all cable protection conduits



SSG



Up to SSG 48



From SSG 70

Type	Order no.	Suitable for Murrflex EW	B 1 mm	B 2 mm	C mm	D mm	I mm	ID mm	Pack qty.
SSG 06	83723210	06/07	15.0	12.0	13.0	5.3	5.0	10.0	25
SSG 07	83723212	07	15.0	12.0	14.0	5.3	5.0	12.0	25
SSG 09	83723214	09	15.0	12.0	14.5	5.3	5.0	13.0	25
SSG 11	83723216	11	15.0	12.0	15.5	5.3	5.0	15.0	25
SSG 16	83723218	16	15.0	12.0	19.0	5.3	5.0	22.0	25
SSG 21	83723222	21	18.5	15.0	22.0	6.4	6.0	28.0	25
SSG 29	83723224	29	18.5	15.0	28.2	6.4	6.0	34.0	25
SSG 36	83723226	29/36	25.0	20.0	31.2	8.4	8.5	40.0	10
SSG 48	83723228	48	18.5	15.0	6.4	6.0	8.5	54.0	10
SSG 70	83723230	70	25.0	20.0	108.0	8.4	8.5	79.0	10
SSG 95	83723232	95	25.0	20.0	134.0	8.4	8.5	105.0	10

Spiral tape, type SB/SBF



-60 to 85 °C

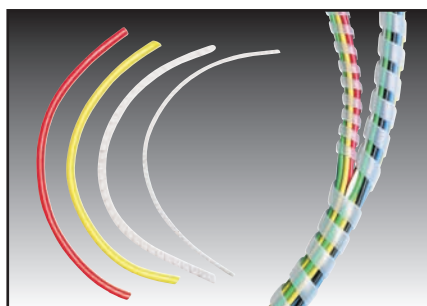


Mod. polyethylene



V0 only type SBF

Spiral tapes are used to bundle cable harnesses efficiently and simply. The spiral tapes also protect the insulation of the wires. Branches of single wires or looms of cables may be made at any place. Bundling in the range from 2–100 mm is possible with just three sizes. The SBF consists of flame-retardant material.



SB / SBF

Type	Order no.	Colour	Bundle range mm	inside mm	external mm	Weight kg/100 m	Pack m
SB 12	87621010	natural colour	2–12	1.5	3.0	0.5	50
SB 50	87621012	natural colour	5–50	4.0	6.0	1.5	100
SB 100	87621014	natural colour	12–100	9.0	12.0	4.0	50
SB 100	87621212	yellow	12–100	9.0	12.0	4.0	50
SB 50	87621210	yellow	5–50	4.0	6.0	1.5	100
SB 50	87621250	orange	5–50	4.0	6.0	1.5	100
SB 100	87621252	orange	12–100	9.0	12.0	4.0	50
SBF 12 *	87621050	white	2–12	1.5	3.0	0.5	50
SBF 50 *	87621052	white	5–50	4.0	6.0	1.5	100
SBF 100 *	87621054	white	12–100	9.0	12.0	4.0	50

* not halogen-free

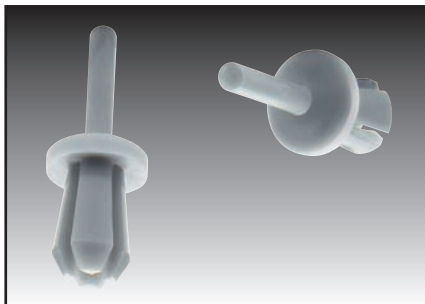
Type BN (fixing rivets)



 -40 to 80 °C

Plastic expansion rivets for the quick installation of components, e.g. cable ducts.

 Hostalene



BN







BNW



Type	Order no.	Colour	Holes (mm)	Shaft length mm	Fixing thickness min.	Fixing thickness max.	Pack qty.
BN 1	87621410	grey	3.0	9.0	3.0	7.5	500
BN 2	87621412	grey	4.5	10.0	3.0	8.0	500
BN 3	87621414	grey	6.5	15.0	4.5	10.0	1000

Recommended riveting tool: BNW, see "Tools"

Type KB/KBM (cable ties)

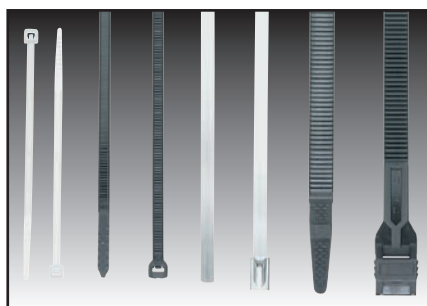
-  natural colours: -25 to 85 °C
black: -40 to 105 °C
-  KB: Polyamide 6.6
KBM: Stainless steel 1.4301
-  KB black: V0
KKB: V0
-  Cable ties in black are UV stabilised

Cable ties are a reliable method for the economic bundling and fastening of cables, cable harnesses, tubes, conduits and other components.

The black cable ties are suitable for outdoor applications.

The cable tie KKB 28 is equipped with a special locking mechanism and is especially suitable for heavy-duty applications.

The KBM metal cable tie is ideally used for EMC solutions. It creates greater contact surface area for discharging sheath currents.



KB / KBM

Type	Order no.	Colour	Length mm	Width mm	Bundle range approx. mm	Tensile strength max. N	Pack qty.
KB 15	87661251	black	75	2.2	15	60	1000
KB 20	87661252	black	98	2.5	20	60	1000
KB 22	87661254	black	130	2.9	22	80	1000
KB 25	87661256	black	140	3.6	25	130	1000
KB 30	87661260	black	160	4.5	30	180	1000
KB 45	87661262	black	178	4.8	45	220	1000
KB 50	87661264	black	200	2.9	50	80	1000
KB 55	87661266	black	200	4.8	50	220	1000
KB 75	87661268	black	290	4.8	75	220	100
KB 100	87661270	black	360	4.8	100	220	100
KB 110	87661272	black	370	7.8	105	540	100
KB 15	87661210	natural colour	75	2.2	15	60	1000
KB 20	87661214	natural colour	98	2.5	20	60	1000
KB 22	87661218	natural colour	130	2.9	22	80	1000
KB 25	87661222	natural colour	140	3.6	25	130	1000
KB 30	87661226	natural colour	160	4.5	30	180	1000
KB 45	87661230	natural colour	178	4.8	45	220	1000
KB 50	87661234	natural colour	200	2.9	50	80	1000
KB 55	87661238	natural colour	200	4.8	50	220	1000
KB 75	87661242	natural colour	290	4.8	75	220	100
KB 100	87661246	natural colour	360	4.8	100	220	100
KB 110	87661248	natural colour	370	7.8	105	540	100

Recommended assembly tool for cable ties up to 6 mm wide: KBW 1K

Recommended assembly tool for cable ties up to 8 mm wide: KKBW

Type BF (cable tie)



-25 to 85 °C



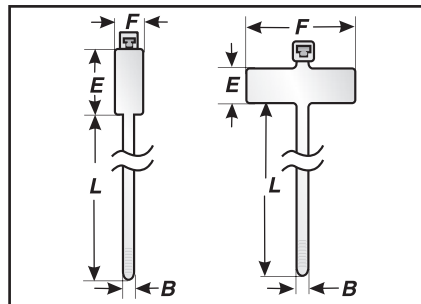
Mod. polyamide 6.6

Cable tie with title block.

For use with ink pens or permanent waterproof markers.

BF20 (Fig., right) title block lengthways along cable.

BF45 (Fig., left) title block across cable.



BF

Type	Order no. natural colour	Colour	L approx. mm	B approx. mm	E approx. mm	F approx. mm	Bundle range approx. mm	Tensile ity min. [N]	Pack qty.
BF 20	87681010	white	86.0	2.5	8.0	25.0	19.0	80.0	100
BF 45	87681012	transparent	157.0	4.7	28.0	13.0	45.0	222.0	100

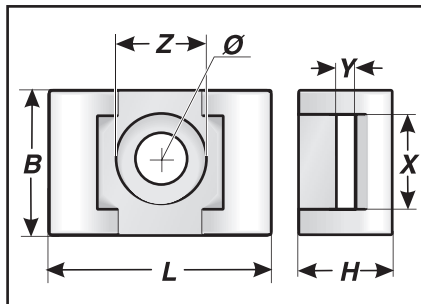
The dimensions may deviate for technical or production reasons.

Type SH (screwed holders)

 -40 to 85 °C

 Mod. polyamide

The SH screw-down holder is used to fix individual cables cost-effectively. It can be screwed or riveted to any surface.



SH

Type	Order no.	Colour	L mm	B mm	H mm	X mm	Y mm	Z mm	\emptyset mm	Pack qty.
SH 1	87681210	white	15.0	10.0	7.0	5.0	2.0	7.0	3.7	100
SH 2	87681212	white	22.5	15.0	11.0	9.2	2.8	10.0	5.0	100

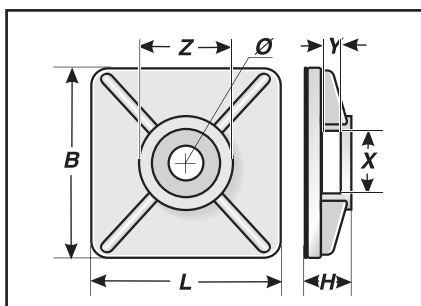


Type KH (screwed and adhesive holders)

 -40 to 85 °C

 Mod. polyamide

Adhesive holder, plastic. The retention force can be increased by additional fastening with a screw. If pressure sensitive adhesives are used, the surface must be smooth and free of dust and grease. Contaminated surfaces must be cleaned with proper cleaning agents.



KH

Type	Order no.	Colour	L mm	B mm	H mm	X mm	Y mm	Z mm	Ø mm	Pack qty.
KH 1	87681220	white	19.0	19.0	6.0	4.0	1.8	7.7	4.3	100
KH 2	87681222	white	27.0	27.0	7.5	6.0	2.3	9.7	4.7	100

Type KBL (cable tie rail)

RoHS compliant



-40 to 80 °C

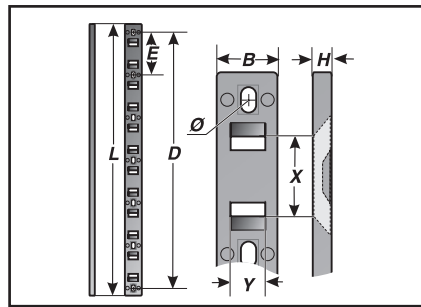
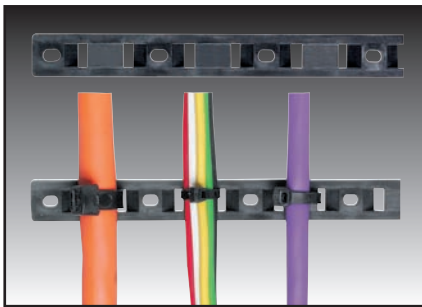


Mod. polyamide 6



V0

Quick and easy fitting of cables.
Cable ties may be pushed on if a rail is already fitted.



KBL



Type	Order no.	Colour	No. cable ties	L mm	B mm	H mm	D mm	E mm	X mm	Y mm	Ø mm	Pack qty.
------	-----------	--------	----------------	------	------	------	------	------	------	------	------	-----------

KBL 245 x 15	87702120	black	6	245.0	15.6	5.1	23.0	38.5	24.0	8.6	4.0	1