

Cable Trolleys for I-beams

Program 0350 | 0360 | 0364



CONDUCTIX
wampfler

Ⓞ DELACHAUX GROUP

Contents

Festoon Systems

Festoon System for Flat and Round Cables	2
--	---

Program 0350 with Main Rollers \varnothing 50 and 63 mm

Single Layer Cable Trolleys for Flat Cables with a Load Capacity up to 125 kg (275 lbs)	3
Selection of Cable Trolleys and Towing Trolleys	4
Selection of End Clamps and Towing Clamps	5
Selection of Running Gear	6

Program 0350 with Main Rollers \varnothing 80 and 100 mm

Single or Dual Layer Cable Trolleys for Flat Cables with a Load Capacity up to 350 kg (770 lbs)	7
Selection of Cable Trolleys and Towing Trolleys	8
Selection of End Clamps and Towing Clamps	9
Additional Supports	9
Selection of Running Gear	10

Program 0360 with Main Rollers \varnothing 50 and 63 mm

Single or Dual Layer Cable Trolleys for Round Cables with a Load Capacity up to 350 kg (770 lbs)	11
Selection of Cable Trolleys and Towing Trolleys	12
Selection of End Clamps and Towing Clamps	13
Additional Supports	13
Selection of Running Gear	14

Program 0360 with Main Rollers \varnothing 80, 100, 112 and 125 mm

Single, Dual or Tripple Layer Cable Trolleys for Round Cables with a Load Capacity up to 500 kg (1100 lbs)	15
Selection of Cable Trolleys and Towing Trolleys	16
Selection of End Clamps and Towing Clamps	17
Additional Supports	17
Selection of Running Gear	18

Program 0364 with Main Rollers \varnothing 100 and 112 mm

Single Layer Cable Trolley with Round Cables with a Load Capacity up to 125 kg (275 lbs)	21
Selection of Cable Trolleys, Towing Trolleys and Towing Trolleys for Catenary Trolley	22
Selection of End Clamps and Towing Clamps	23
Selection of Running Gear	23

Accessories for Program 0350, 0360 and 0364

Towing Ropes	24
Damping Devices	24
Cable Organizers for Cable Loops	25
Additional Clamping Pieces for Round Cable Clamps	25
Round Cable Clamps	26
Spacers	27
Flat Cable Clamps	27

Wear Parts for Program 0350, 0360 and 0364

Replacement Rollers for Running Gear	29
Replacement Rollers for Running Gear	30
Rectangular Buffer	31
Round Buffer	31

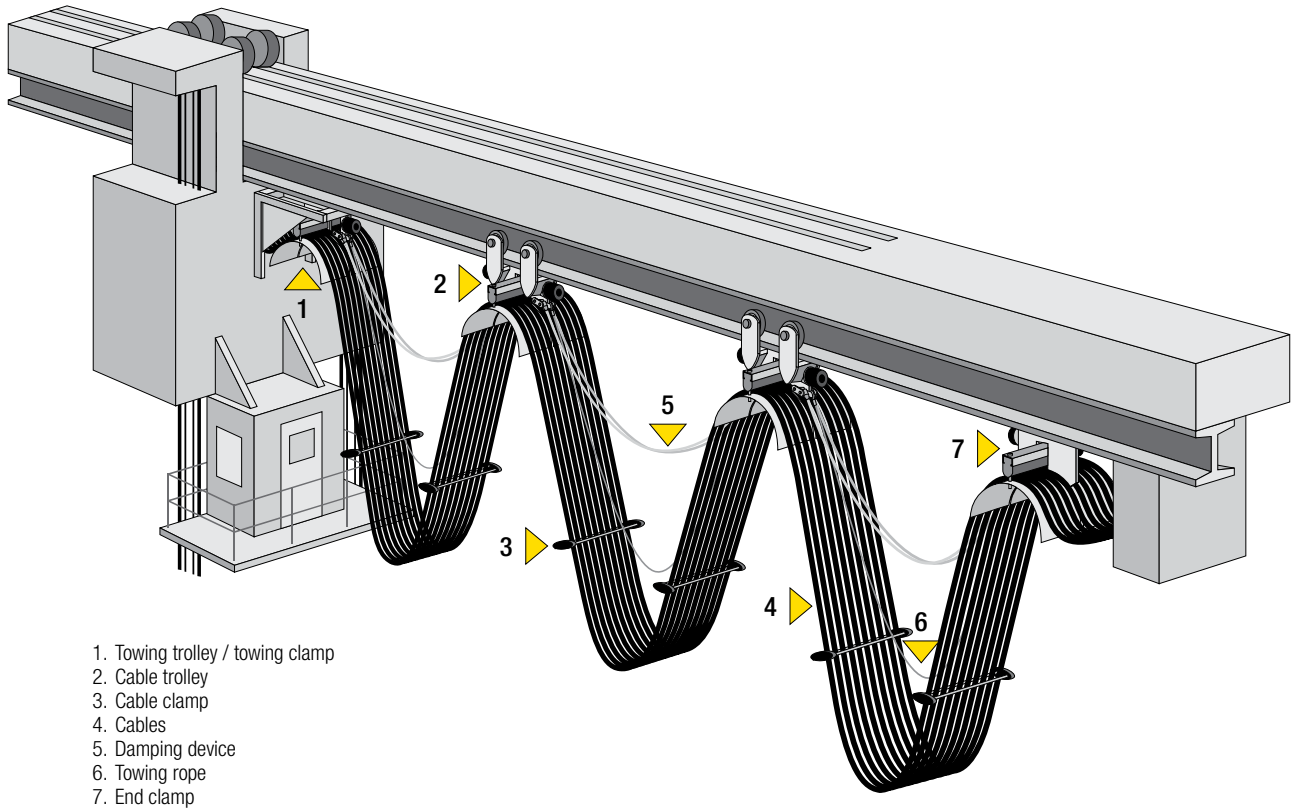
Spare Parts for Program 0350, 0360 and 0364

Cable Supports including Clamping Bar	32
Clamping Bars (Complete)	32
Side Shields (Complete)	32
Running Gears (Complete)	32

Conversion:	mm	50	63	80	100	112	125
	in	2.0	2.5	3.0	4.0	4.5	5.0

Festoon Systems

Festoon System for Flat and Round Cables



1. Towing trolley / towing clamp
2. Cable trolley
3. Cable clamp
4. Cables
5. Damping device
6. Towing rope
7. End clamp

A festoon system consists of the following components:

- 1 x end clamp
- X x cable trolleys
- 1 x towing trolley or alternatively 1 x towing clamp
- cable trolley and towing trolley require a running gear, which must be selected in addition to the trolley under part
- cable trolleys and towing trolleys are set to fit the exact track beam, in all cases the track beam must be specified
- the system components can be equipped with one or two additional cable supports depending on the program.

To ensure optimum operation of the system, depending upon the application, various accessories must be added, e.g. flat or round cable clamps, towing ropes or damping devices.

The Order No. of the system components is determined by the combination of the following single sub-assemblies:

Cable Trolley Underpart	Additional Support 1	Additional Support 2	Running Gear	Track Beam Designation
Also:				
Towing trolley underpart	optional	optional	only for cable trolleys and towing trolleys	
Towing clamp				
End clamp				

For Order No. see the respective catalog pages of the programs.
The system components are completely assembled prior to delivery, cable trolleys and towing trolleys are adjusted to the respective track beam.

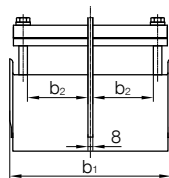
Program 0350 with Main Rollers $\varnothing 50$ and 63 mm

Single Layer Cable Trolleys for Flat Cables with a Load Capacity up to 125 kg (275 lbs)

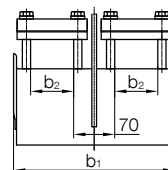


Technical details

Cable Supports	welded to the center plate, lateral-loading
Buffers	single-sided rectangular buffer
Travel Speed max.	160 m/min (525 ft/min)
Load Capacity max.	125 kg (275 lbs)
Cable Trolley Underpart and Running Gear	hot-dipped galvanized steel
Fasteners	stainless steel
Temperature Range	-30°C to + 80°C (- 22°F to + 176°F)



Clamping bar version 1
(continuous)



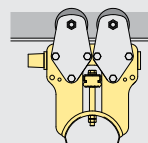
Clamping bar version 2
(divided)

Ordering Example

Order No. **0350215-34 - 431 - 1014**

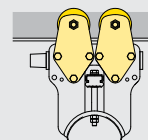
A cable trolley underpart with the following dimensions shall be used:

- Support diameter: $d_s = 160$ mm
- Clamping width: $b_2 = 152$ mm;
- Clamping height: $s = 70$ mm
- Order No.: 0350215-34 (chosen from catalog page 6)



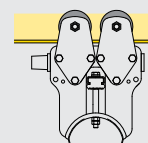
The following running gear has been chosen:

- Type S, flanged main rollers $\varnothing 63$ mm made of steel
- without anti-lift rollers
- Order No. 431 (chosen from catalog page 6)



The following track beam has been chosen:

- S4 x7.7
- I-beam code: 1014 (chosen from catalog page 6)



The Order No. of the appropriate towing trolley is
the running gear must always be equipped with anti-lift rollers:

0350315-34-432-1014

The Order No. of the appropriate end clamp is:

0350115-34

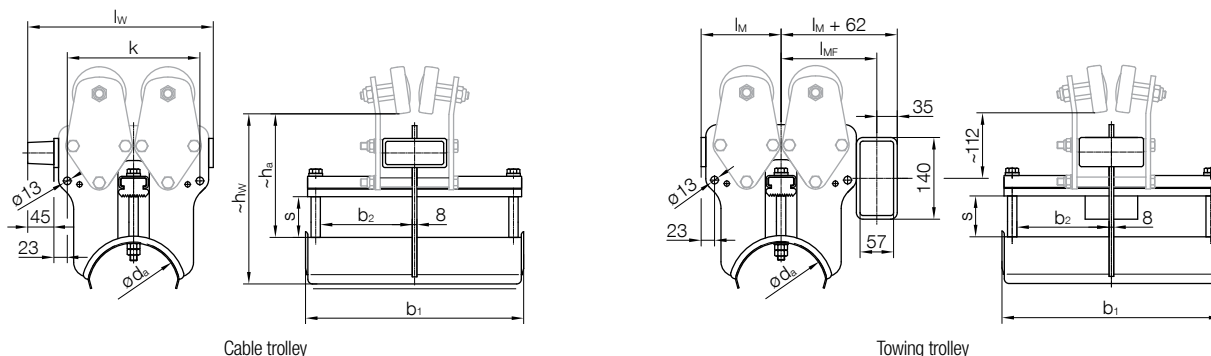
As an alternative to the towing trolley a towing clamp can be used.
The Order No. of the appropriate towing clamp is:

0350415-34

For calculation and selection please refer to the Engineering Guideline KAT0300-0101.

Program 0350 with Main Rollers $\varnothing 50$ and 63 mm

Selection of Cable Trolleys and Towing Trolleys



Cable Trolley Underpart ¹⁾		Towing Trolley Underpart ¹⁾		d _a	l _w	b ₁	b ₂	s	k	Clamping Bar Version	h _a	h _w	l _M	l _{MF}
Order No.	[kg]	Order No.	[kg]	[mm]	[mm]	[mm]	[mm]	[mm]	[mm]		[mm]	[mm]	[mm]	[mm]
0350213-20	4.0	0350313-20	5.1	125	250	215	72	52	158	1	185	250	102	129
0350213-22	4.4	0350313-22	5.5			280	105							
0350213-24	5.2	0350313-24	6.0			375	152							
0350212-30	4.1	0350312-30	5.2			215	72	35		1				
0350212-32	4.5	0350312-32	5.6			280	105							
0350212-34	5.2	0350312-34	6.3			375	152							
0350215-30	5.2	0350315-30	6.4	160	320	215	72	70	228	1	200	280	137	164
0350215-32	5.7	0350315-32	6.8			280	105							
0350215-34	6.4	0350315-34	7.5			375	152							
0350213-40	5.2	0350313-40	6.5			215	72	52		1				
0350213-42	5.7	0350313-42	7.0			280	105							
0350223-43	6.7	0350323-43	7.6			375	125							
0350213-44	6.4	0350313-44	7.8	375	152									
0350216-42	7.3	0350316-42	8.4	200	400	280	105	90	308	1	215	315	177	204
0350226-43	8.3	0350326-43	9.4			375	125							
0350216-44	8.0	0350316-44	9.1			375	152							
0350214-50	6.6	0350314-50	7.7			215	72	65		1				
0350214-52	7.1	0350314-52	8.6			280	105							
0350224-53	8.1	0350324-53	9.6			375	125							
0350214-54	8.1	0350314-54	9.3	375	152									

1) without running gear

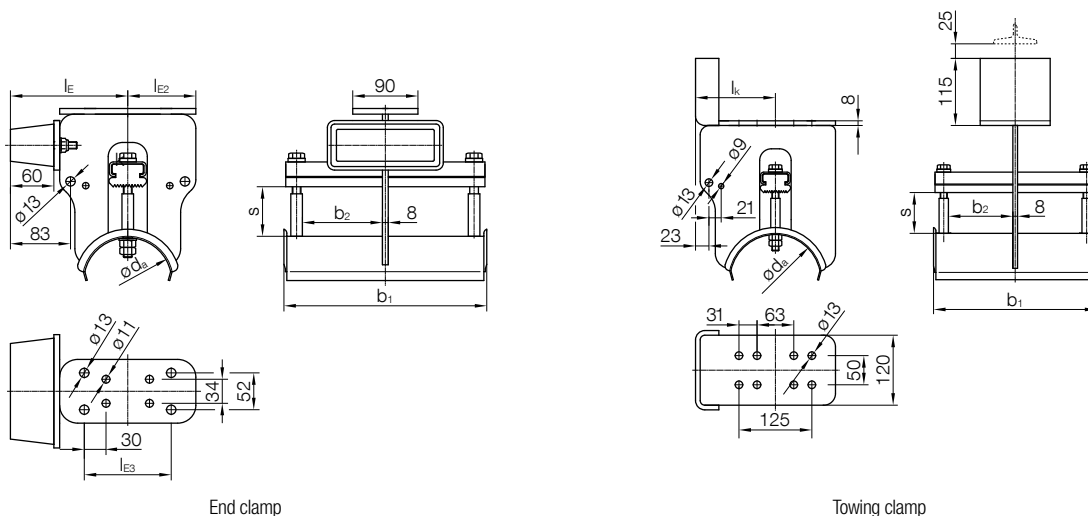
Notes

- The table only refers to the cable trolley or towing trolley underpart, the running gear must be selected and added. See page 6 of this catalog.
- Additional cable supports for this program are only available for systems with main roller sizes $\varnothing 80$ and 100 mm. See page 7 of this catalog.

Conversion: 1 mm \approx 0.04 in | 1 kg \approx 2.20 lbs

Program 0350 with Main Rollers $\varnothing 50$ and 63 mm

Selection of End Clamps and Towing Clamps



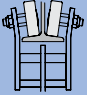
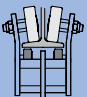
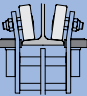
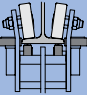
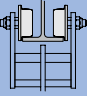
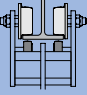
End clamp

Towing clamp

End Clamp Complete		Towing Clamp Complete		d_a	l_E	l_{E2}	l_{E3}	b_1	b_2	s	Clamping Bar Version	l_k
Order No.	[kg]	Order No.	[kg]	[mm]	[mm]	[mm]	[mm]	[mm]	[mm]	[mm]		[mm]
0350113-20	5.6	0350413-20	6.0	125	162	94	120	215	72	52	1	102
0350113-22	5.9	0350413-22	6.3					280	105			
0350113-24	6.5	0350413-24	6.9					375	152			
0350112-30	5.7	0350412-30	6.2	160	162	94	120	215	72	35	1	102
0350112-32	6.1	0350412-32	6.5					280	105			
0350112-34	6.8	0350412-34	7.2					375	152			
0350115-30	7.1	0350415-30	7.3	160	197	103	160	215	72	70	1	137
0350115-32	7.5	0350415-32	7.8					280	105			
0350115-34	8.4	0350415-34	8.5					375	152			
0350113-40	7.2	0350413-40	7.5	200	197	103	160	215	72	52	1	137
0350113-42	7.6	0350413-42	8.0					280	105			
0350123-43	8.5	0350423-43	8.8					375	125			
0350113-44	8.3	0350413-44	8.6	200	197	103	160	375	152	52	1	137
0350116-42	8.4	0350416-42	9.1					280	105			
0350126-43	10.1	0350426-43	10.6					375	125			
0350116-44	9.8	0350416-44	10.3	250	237	130	230	375	152	90	1	177
0350114-50	8.6	0350414-50	8.8					215	72			
0350114-52	8.8	0350414-52	9.7					280	105			
0350124-53	10.2	0350424-53	8.9	250	237	130	230	375	125	65	2	177
0350114-54	10.0	0350414-54	8.7					375	152			

Program 0350 with Main Rollers $\varnothing 50$ and 63 mm

Selection of Running Gear

Running Gear		Order No.	Main Roller		Weight approx. [kg]	Parallel Flange	Preference Range I-beams		
			d [mm]	Material Bandage			I-beam Code	Tapered Flange	I-beam Code
	Type H with cylindrical main rollers	311	50	Steel	3.8	-	-	S3x5.7	1010
		341	50	Vulkollan	3.5			S4x7.7	1014
		411	63	Steel	5.1	-	-	S3x5.7	1010
		441	63	Vulkollan	4.7			S4x7.7	1014
	Type HG with cylindrical main rollers and anti-lift rollers	312	50	Steel	4.3	-	-	S3x5.7	1010
		342	50	Vulkollan	4.1			S4x7.7	1014
		412	63	Steel	5.6	-	-	S3x5.7	1010
		442	63	Vulkollan	4.9			S4x7.7	1014
	Type HF with cylindrical main rollers and horizontal guide rollers	313	50	Steel	4.0	-	-	S3x5.7	1010
		347	50	Vulkollan	3.8			S4x7.7	1014
		413	63	Steel	5.1	W4x13 W5x16	1110 1112	S5x10.0	1018
		447	63	Vulkollan	4.4			S6x12.5	1022
	Type HFG with cylindrical main rollers, horizontal guide rollers and anti-lift rollers	314	50	Steel	4.5	-	-	S3x5.7	1010
		348	50	Vulkollan	4.0			S4x7.7	1014
		414	63	Steel	5.6	W4x13 W5x16	1110 1112	S5x10.0	1018
		448	63	Vulkollan	4.9			S6x12.5	1022
	Type S with flanged main rollers	331	50	Steel	4.2	-	-	S3x5.7	1010
		431	63	Steel	5.5			W4x13 W5x16	1110 1112
	Type SG with flanged main rollers and anti-lift rollers	332	50	Steel	4.4	-	-	S5x10.0	1018
		432	63	Steel	6.1			W4x13 W5x16	1110 1112

Note/design

- The running gear of the towing trolley must always be equipped with anti-lift rollers.
- The anti-lift rollers $\varnothing 40$ mm are made of steel.
- The horizontal guide rollers $\varnothing 40$ mm are made of steel.
- Other materials of the horizontal guide rollers, e.g. Vulkollan on request.
- The rollers are equipped with precision ball bearings and additional sealing disks (2RS1). The ball bearings are lifetime lubricated.
- Running gear for other I-beam types or beam sizes on request.

Conversion: 1 mm \pm 0.04 in | 1 kg \pm 2.20 lbs

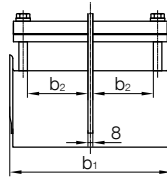
Program 0350 with Main Rollers $\varnothing 80$ and 100 mm

Single or Dual Layer Cable Trolleys for Flat Cables with a Load Capacity up to 350 kg (770 lbs)

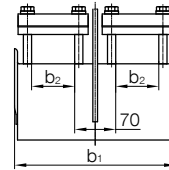


Technical details

Cable Supports	welded to the center plate, lateral-loading
Buffers	single-sided rectangular buffer
Travel Speed max.	160 m/min (525 ft/min)
Load Capacity max.	350 kg (770 lbs)
Cable Trolley Underpart and Running Gear	hot-dipped galvanized steel
Fasteners	stainless steel
Temperature Range	-30°C to + 80°C (- 22°F to + 176°F)



Clamping bar version 1
(continuous)



Clamping bar version 2
(divided)

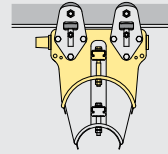
Ordering Example

Order No.

0352214-52 32 - 613 - 1018

A cable trolley underpart with the following dimensions shall be used:

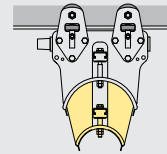
- Support diameter: $d_s = 250$ mm
- Clamping width: $b_2 = 105$ mm;
- Clamping height: $s = 65$ mm
- Order No.: 0352214-52 (chosen from catalog page 8)



An additional support

with a diameter of $d_{s2} 160$ mm shall be used.
The width b_1 of the additional supports must always be chosen identical with the upper support

Order No. 32 (chosen from catalog page 9)

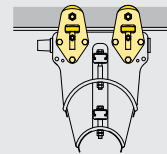


The following running gear has been chosen:

Type HF, cylindrical main rollers $\varnothing 100$ mm made of steel

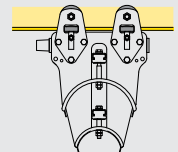
- with horizontal guide rollers made of steel
- without anti-lift rollers

Order No. 613 (chosen from catalog page 10)



The following track beam has been chosen:

- S5x10.8
- I-beam code: 1018 (chosen from catalog page 10)



The Order No. of the appropriate towing trolley is
the running gear must always be equipped with anti-lift rollers:

0352314-5232-614-1018

The Order No. of the appropriate end clamp is:

0350114-5232

As an alternative to the towing trolley a towing clamp can be used.

The Order No. of the appropriate towing clamp is:

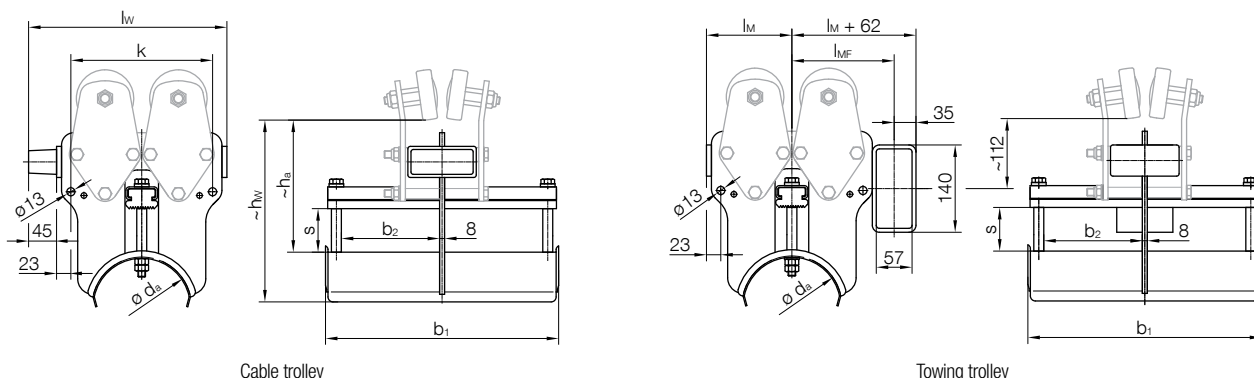
0350414-5232

For calculation and selection please refer to the Engineering Guideline KAT0300-0101.

Optional: Independent removable side shields for easy roller replacement from roller size $\varnothing 80$ (3 in) add -5 at the end of the complete order no. e.g. 0352214-5232-613-1022-5

Program 0350 with Main Rollers $\varnothing 80$ and 100 mm

Selection of Cable Trolleys and Towing Trolleys



Cable Trolley Underpart ¹⁾		Towing Trolley Underpart ¹⁾		d_a	l_w	b_1	b_2	s	k	Clamping Bar Version	h_a	h_w	l_M	l_{MF}	
Order No.	[kg]	Order No.	[kg]	[mm]	[mm]	[mm]	[mm]	[mm]	[mm]		[mm]	[mm]	[mm]	[mm]	
0352215-30	5.2	0352315-30	6.6	160	320	215	72	70	228	1	215	295	137	164	
0352215-32	5.7	0352315-32	7.0			280	105			1					
0352215-34	6.4	0352315-34	7.7			375	152			1					
0352213-40	5.2	0352313-40	6.8	200	320	215	72	52	228	1	195	295	137	164	
0352213-42	5.7	0352313-42	7.2			280	105			1					
0352223-43	6.7	0352323-43	8.0			375	125			2					
0352213-44	6.4	0352313-44	7.8	200	320	375	152	52	228	1	195	295	137	164	
0352216-42	7.3	0352316-42	7.9			280	105			1					
0352226-43	8.3	0352326-43	9.4			375	125								2
0352216-44	8.0	0352316-44	9.1	375	152	1	308	215	315		177	204			
0352214-50	6.6	0352314-50	8.1	400	400	280				105			90	308	190
0352214-52	7.1	0352314-52	8.4			215				72					
0352224-53	8.1	0352324-53	9.4			280	105	1							
0352214-54	8.1	0352314-54	9.2	250	400	375	125	65	308	190	315	177	204		
						375	152							2	1

1) without running gear

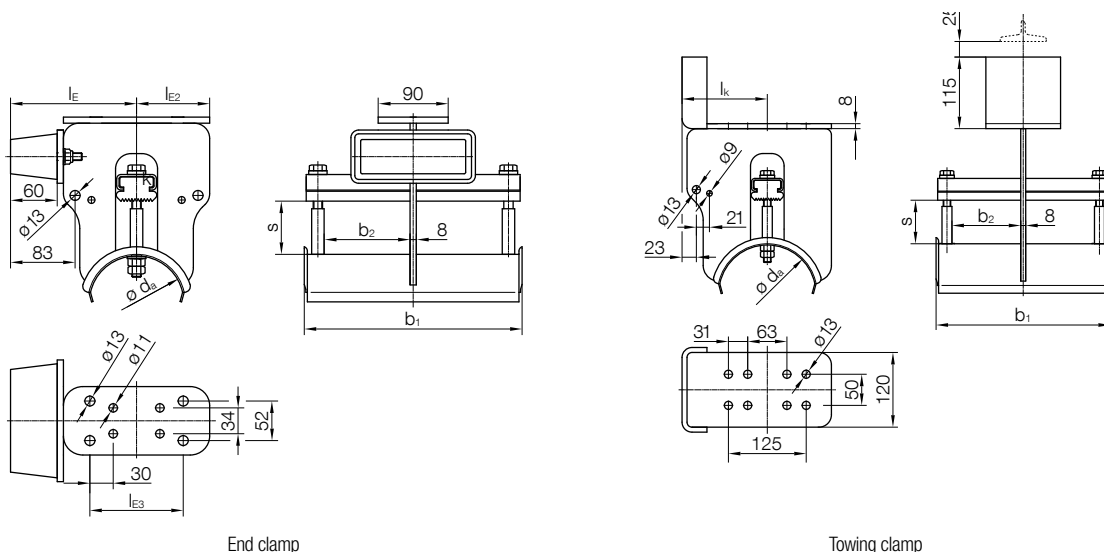
Notes

- The table only refers to the cable trolley or towing trolley underpart, the running gear must be selected and added. See page 10 of this catalog.
- The system components can be equipped with one or two additional supports. See page 9 of this catalog.

Conversion: 1 mm \triangleq 0.04 in | 1 kg \triangleq 2.20 lbs

Program 0350 with Main Rollers $\varnothing 80$ and 100 mm

Selection of End Clamps and Towing Clamps

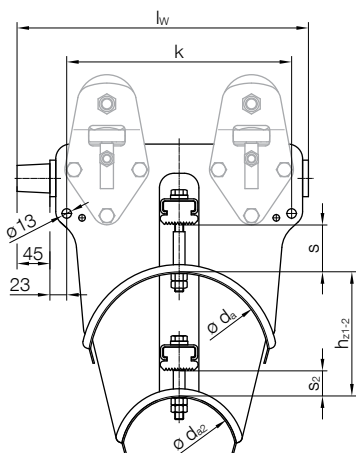


End clamp

Towing clamp

End Clamp Complete		Towing Clamp Complete		d_a	l_E	l_{E2}	l_{E3}	b_1	b_2	s	Clamping Bar Version	l_k				
Order No.	[kg]	Order No.	[kg]	[mm]	[mm]	[mm]	[mm]	[mm]	[mm]	[mm]		[mm]				
0350115-30	7.1	0350415-30	7.3	160	197	103	160	215	72	70	1	137				
0350115-32	7.5	0350415-32	7.8					280	105		1					
0350115-34	8.4	0350415-34	8.5					375	152		1					
0350113-40	7.2	0350413-40	7.5	200				237	130	230	215		72	52	1	177
0350113-42	7.6	0350413-42	8.0								280		105		1	
0350123-43	8.5	0350423-43	8.8								375		125		2	
0350113-44	8.3	0350413-44	8.6	250	237	130	230				280	105	90	1	177	
0350116-42	8.4	0350416-42	9.1								375	125		2		
0350126-43	10.1	0350426-43	10.6								375	152		1		
0350116-44	9.8	0350416-44	10.3	250				237	130	230	215	72	65	1		177
0350114-50	8.6	0350414-50	8.8								280	105		1		
0350114-52	8.8	0350414-52	9.7								375	125		2		
0350124-53	10.2	0350424-53	8.9	250	237	130	230				375	152	1	1	177	
0350114-54	10.0	0350414-54	8.7								375	152		1		

Additional Supports

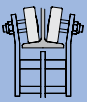
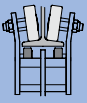
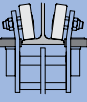
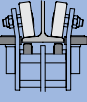
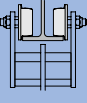
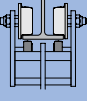


Additional Support Order No.	[kg]	d_a	d_{a2}	b_1	b_2	s_2	Clamping Bar Version	h_{Z1-2}
		[mm]	[mm]	[mm]	[mm]	[mm]		[mm]
20	2.8	200	125	215	72	35	1	170
22	3.2			280	105		1	
23	3.8			375	125		2	
24	3.7	250	160	375	152	35	1	170
30	3.0			215	72		1	
32	3.4			280	105		1	
33	4.2	250	160	375	125	35	2	170
34	4.1			375	152		1	

The support width as well as the clamping bar design of the additional support must correspond to the upper support of the cable trolley.

Program 0350 with Main Rollers $\varnothing 80$ and 100 mm

Selection of Running Gear

Running Gear		Order No.	Main Roller		Weight approx. [kg]	Parallel Flange	Preference Range I-beams		
			d [mm]	Material Bandage			I-beam Code	Tapered Flange	I-beam Code
	Type H with cylindrical main rollers	511	80	Steel	8.3	-	-	S4x7.7	1014
		541	80	Vulkollan	7.7			S5x10.0	1018
		611	100	Steel	12.3	W4x13	1110	S4x7.7	1014
		641	100	Vulkollan	11.8			S5x10.0	1018
	Type HG with cylindrical main rollers and anti-lift rollers	512	80	Steel	9.5	-	-	S4x7.7	1014
		542	80	Vulkollan	8.1			S5x10.0	1018
		612	100	Steel	13.8	W4x13	1110	S4x7.7	1014
		642	100	Vulkollan	13.3			S5x10.0	1018
	Type HF with cylindrical main rollers and horizontal guide rollers	513	80	Steel	9.7	W4x13 W5x16	1110 1112	S5x10.0	1018
		547	80	Vulkollan	8.3			S6x12.5	1022
		613	100	Steel	13.3	W4x13 W5x16	1110 1112	S5x10.0	1018
		647	100	Vulkollan	12.8			S6x12.5	1022
	Type HFG with cylindrical main rollers, horizontal guide rollers and anti-lift rollers	514	80	Steel	9.8	W4x13 W5x16	1110 1112	S5x10.0	1018
		548	80	Vulkollan	9.3			S6x12.5	1022
		614	100	Steel	14.3	W4x13 W5x16	1110 1112	S5x10.0	1018
		648	100	Vulkollan	13.8			S6x12.5	1022
	Type S with flanged main rollers	531	80	Steel	9.9	W4x13 W5x16	1110 1112	S5x10.0	1018
		631	100	Steel	16.0			S6x12.5	1022
	Type SG with flanged main rollers and anti-lift rollers	532	80	Steel	11.3	W4x13 W5x16	1110 1112	S5x10.0	0014
		632	100	Steel	17.3			S6x12.5	0016
								S5x10.0	1018
								S6x12.5	1022
								S7x15.3	1026
								S8x18.4	1030

Note/design

- The running gear of the towing trolley must always be equipped with anti-lift rollers.
- Main roller $\varnothing 80$ mm: anti-lift rollers $\varnothing 50$ mm and horizontal guide rollers $\varnothing 50$ mm made of steel
- Main roller $\varnothing 100$ mm: anti-lift rollers $\varnothing 50$ mm and horizontal guide rollers $\varnothing 63$ mm made of steel
- Other materials of the horizontal guide rollers, e.g. Vulkollan on request.
- The rollers are equipped with precision ball bearings and additional sealing disks (2RS1).
The ball bearings are lifetime lubricated.
- Running gear for other I-beam types or beam sizes on request.

Optional:

Independent removable side shields for easy roller replacement from roller size $\varnothing 80$ (3 in)
add -5 at the end of the complete order no. e.g. 0352214-5232-613-1022-5

Conversion: 1 mm \approx 0.04 in | 1 kg \approx 2.20 lbs

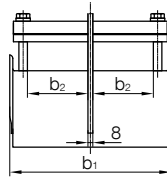
Program 0360 with Main Rollers $\varnothing 50$ and 63 mm

Single or Dual Layer Cable Trolleys for Round Cables with a Load Capacity up to 350 kg (770 lbs)

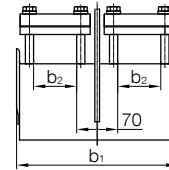


Technical details

Cable Supports	bolted to the center plate, lateral-loading
Buffers	single-sided rectangular buffer
Travel Speed max.	160 m/min (525 ft/min)
Load Capacity max.	350 kg (770 lbs)
Cable Trolley Underpart and Running Gear	hot-dipped galvanized steel
Fasteners	stainless steel
Temperature Range	-30°C to + 80°C (-22°F to + 176°F)



Clamping bar version 1
(continuous)



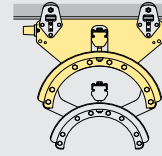
Clamping bar version 2
(divided)

Ordering Example

Order No. **036022-86 66 - 414 - 1018**

A cable trolley underpart with the following dimensions shall be used:

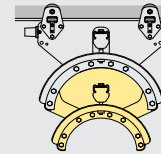
- Support diameter: $d_s = 360$ mm
- Clamping width: $b_2 = 200$ mm;
- Clamping height: $s = 36$ mm
- Order No.: 036022-86 (chosen from catalog page 12)



An additional support

with a diameter $d_{s2} 260$ mm shall be used. The width b_1 of the additional supports must always be chosen identical with the upper support

Order No. 66 (chosen from catalog page 13)

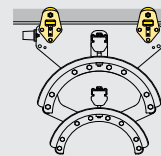


The following running gear has been chosen:

Type HFG, cylindrical main rollers $\varnothing 63$ mm with Vulkollan bandage

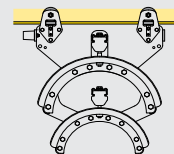
- with horizontal guide rollers made of steel
- with anti-lift rollers made of steel

Order No. 414 (chosen from catalog page 14)



The following track beam has been chosen:

- S5 x 10.0
- I-beam code: 1018 (chosen from catalog page 14)



The Order No. of the appropriate towing trolley is the running gear must always be equipped with anti-lift rollers:

036032-8666-414-1018

The Order No. of the appropriate end clamp is:

036012-8666

As an alternative to the towing trolley a towing clamp can be used.

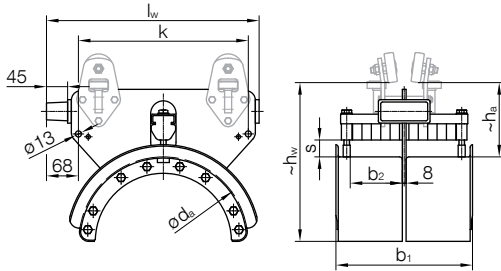
The Order No. of the appropriate towing clamp is:

036042-8666

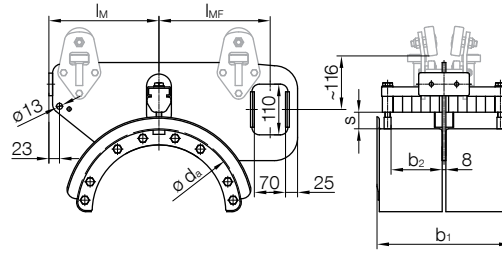
For calculation and selection please refer to the Engineering Guideline KAT0300-0101.

Program 0360 with Main Rollers $\varnothing 50$ and 63 mm

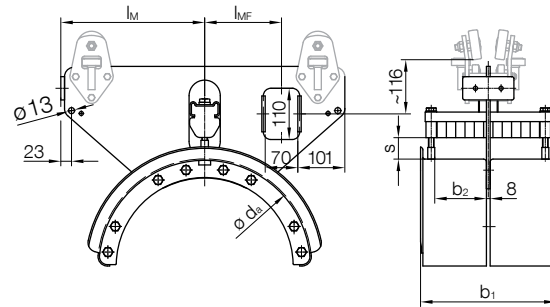
Selection of Cable Trolleys and Towing Trolleys



Cable trolley



Towing trolley d_s 260 mm and 360 mm



Towing trolley d_s 460 mm

Cable Trolley Underpart ¹⁾		Towing Trolley Underpart ¹⁾		d_s	l_w	b_1	b_2	s	k	Clamping Bar Version	h_a	h_w	l_M	l_{MF}
Order No.	[kg]	Order No.	[kg]	[mm]	[mm]	[mm]	[mm]	[mm]	[mm]		[mm]	[mm]	[mm]	[mm]
036021-62	8.2	036031-62	11.5	260	334	291	110	26	242	1	150	276	170	172
036021-64	9.4	036031-64	14.2			384	155			1				
036022-66	12.2	036032-66	15.8			532	200			2				
036022-68	13.4	036032-68	17.1			632	250			2				
036021-82	10.6	036031-82	17.0	360	454	291	110	36	362	1	160	336	239	241
036021-84	12.0	036031-84	18.6			384	155			1				
036022-86	15.7	036032-86	22.6			532	200			2				
036022-88	17.3	036032-88	24.3			632	250			2				
036021-92	13.7	036031-92	23.2	460	574	291	110	46	482	1	180	410	309	165
036021-94	15.7	036031-94	25.0			384	155			1				
036022-96	20.5	036032-96	30.4			532	200			2				
036022-98	21.1	036032-98	31.9			632	250			2				

1) without running gear

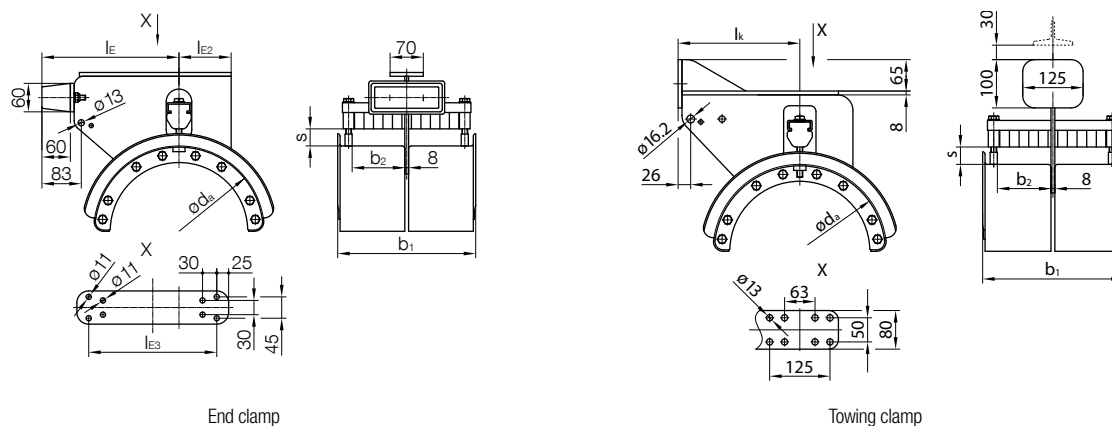
Notes

- The table only refers to the cable trolley or towing trolley underpart, the running gear must be selected and added. See page 14 of this catalog.
- The system components can be equipped with an additional support. See page 13 of this catalog.

Conversion: 1 mm \triangleq 0.04 in | 1 kg \triangleq 2.20 lbs

Program 0360 with Main Rollers $\varnothing 50$ and 63 mm

Selection of End Clamps and Towing Clamps

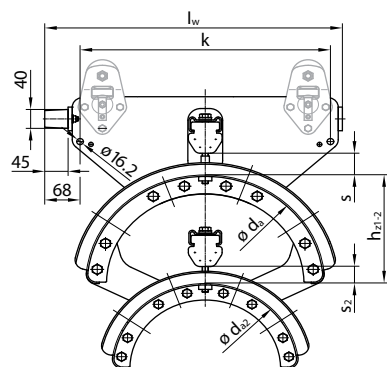


End clamp

Towing clamp

End Clamp Complete		Towing Clamp Complete		d_a	l_E	l_{E2}	l_{E3}	b_1	b_2	s	Clamping Bar Version	l_k
Order No.	[kg]	Order No.	[kg]	[mm]	[mm]	[mm]	[mm]	[mm]	[mm]	[mm]		[mm]
036011-62	10.6	036041-62	10.0	260	219	81	170	291	110	26	1	182
036011-64	12.9	036041-64	11.8					384	155		2	
036012-66	14.5	036042-66	14.2					532	200		2	
036012-68	15.8	036042-68	15.6					632	250		2	
036011-82	15.7	036041-82	15.3	360	289	110	270	291	110	36	1	252
036011-84	17.2	036041-84	17.4					384	155		1	
036012-86	21.2	036042-86	21.7					532	200		2	
036012-88	22.9	036042-88	23.9					632	250		2	
036011-92	24.0	036041-92	20.6	460	359	125	360	291	110	46	1	322
036011-94	25.3	036041-94	22.4					384	155		1	
036012-96	29.4	036042-96	27.2					532	200		2	
036012-98	31.0	036042-98	30.0					632	250		2	

Additional Supports




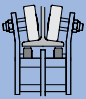
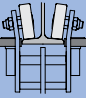
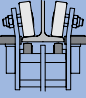
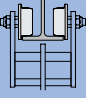
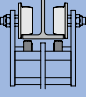
Additional Support Order No.	[kg]	d_a	d_{a2}	b_1	b_2	s_2	Clamping Bar Version	h_{Z1-2}
		[mm]	[mm]	[mm]	[mm]	[mm]		[mm]
32	4.8	260	160	291	110	16	1	180
34	5.6			384	155		1	
62	10.9	360	260	291	110	26	1	178
64	13.0			384	155		1	
66	17.2			532	200		2	
68	19.1			632	250		2	
69	22.0			772	320		2	
82	11.9	460	360	291	110	36	1	205
84	14.0			384	155		1	
86	18.3			532	200		2	
88	20.2			632	250		2	
89	23.1			772	320		2	

The support width as well as the clamping bar design of the additional support must correspond to the upper support of the cable trolley.

Program 0360

with Main Rollers $\varnothing 50$ and 63 mm

Selection of Running Gear

Running Gear		Order No.	Main Roller		Weight approx. [kg]	Parallel Flange	Preference Range I-beams		
			d [mm]	Material Bandage			I-beam Code	Tapered Flange	I-beam Code
	Type H with cylindrical main rollers	311	50	Steel	3.8	-	-	S3x5.7	1010
		341	50	Vulkollan	3.5			S4x7.7	1014
		411	63	Steel	5.1			S3x5.7	1010
		441	63	Vulkollan	4.7			S4x7.7	1014
	Type HG with cylindrical main rollers and anti-lift rollers	312	50	Steel	4.3	-	-	S3x5.7	1010
		342	50	Vulkollan	4.1			S3x5.7	1010
		412	63	Steel	5.6			S4x7.7	1014
		442	63	Vulkollan	4.9			S6x12.5	1022
	Type HF with cylindrical main rollers and horizontal guide rollers	313	50	Steel	4.0	W4x13	1110	S3x5.7	1010
		347	50	Vulkollan	3.8			S4x7.7	1014
		413	63	Steel	5.1	W4x13 W5x16	1110 1112	S5x10.0	1018
		447	63	Vulkollan	4.4			S6x12.5	1022
	Type HFG with cylindrical main rollers, horizontal guide rollers and anti-lift rollers	314	50	Steel	4.5	W4x13	1110	S3x5.7	1010
		348	50	Vulkollan	4.0			S4x7.7	1014
		414	63	Steel	5.6	W4x13 W5x16	1110 1112	S5x10.0	1018
		448	63	Vulkollan	4.9			S6x12.5	1022
	Type S with flanged main rollers	331	50	Steel	4.2	W4x13	1110	S3x5.7	1010
		431	63	Steel	5.5	W4x13 W5x16	1110 1112	S4x7.7	1014
	Type SG with flanged main rollers and anti-lift rollers	332	50	Steel	4.4	W4x13	1110	S5x10.0	1018
		432	63	Steel	6.1	W4x13 W5x16	1110 1112	S6x12.5	1022

Note/design

- The running gear of the towing trolley must always be equipped with anti-lift rollers.
- The anti-lift rollers $\varnothing 40$ mm are made of steel.
- The horizontal guide rollers $\varnothing 40$ mm are made of steel.
- Other materials of the horizontal guide rollers, e.g. Vulkollan on request.
- The rollers are equipped with precision ball bearings and additional sealing disks (2RS1). The ball bearings are lifetime lubricated.
- Running gear for other I-beam types or beam sizes on request.

Conversion: 1 mm \approx 0.04 in | 1 kg \approx 2.20 lbs

Program 0360

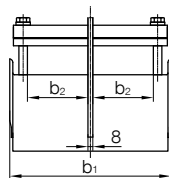
with Main Rollers $\varnothing 80, 100, 112$ and 125 mm

Single, Dual or Tripple Layer Cable Trolleys for Round Cabes with a Load Capacity up to 500 kg (1100 lbs)

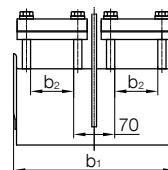


Technical details

Cable Supports	bolted to the center plate, lateral-loading
Buffers	single-sided round buffer
Travel Speed max.	160 m/min (525 ft/min)
Load Capacity max.	500 kg (1100 lbs)
Cable Trolley Underpart and Running Gear	hot-dipped galvanized steel
Fasteners	stainless steel
Temperature Range	-30°C to + 80°C (-22°F to + 176°F)



Clamping bar version 1 (continuous)



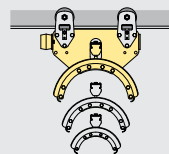
Clamping bar version 2 (divided)

Ordering Example

Order No. **036222-96 8666 - 648 - 1022**

A cable trolley underpart with the following dimensions shall be used:

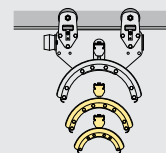
- Support diameter: $d_s = 460$ mm
- Clamping width: $b_2 = 200$ mm;
- Clamping height: $s = 46$ mm
- Order No.: **036222-96** (chosen from catalog page 16)



Two additional supports

with a diameter d_{s2} 360 mm and d_{s3} 260 mm shall be used. The width b_1 of the additional supports must always be chosen identical with the upper support

Order No. **8666** (chosen from catalog page 17)

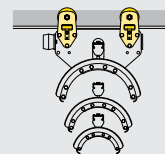


The following running gear has been chosen:

Type HFG, cylindrical main rollers $\varnothing 100$ mm with Vulkollan bandage

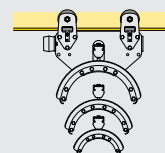
- with horizontal guide rollers made of steel
- with anti-lift rollers made of steel

Order No. **648** (chosen from catalog page 18)



The following track beam has been chosen:

- S6x12.5
- I-beam code: **1022** (chosen from catalog page 18)



The Order No. of the appropriate towing trolley is the running gear must always be equipped with anti-lift rollers:

036232-968666-648-1022

The Order No. of the appropriate end clamp is:

036212-968666

As an alternative to the towing trolley a towing clamp can be used.

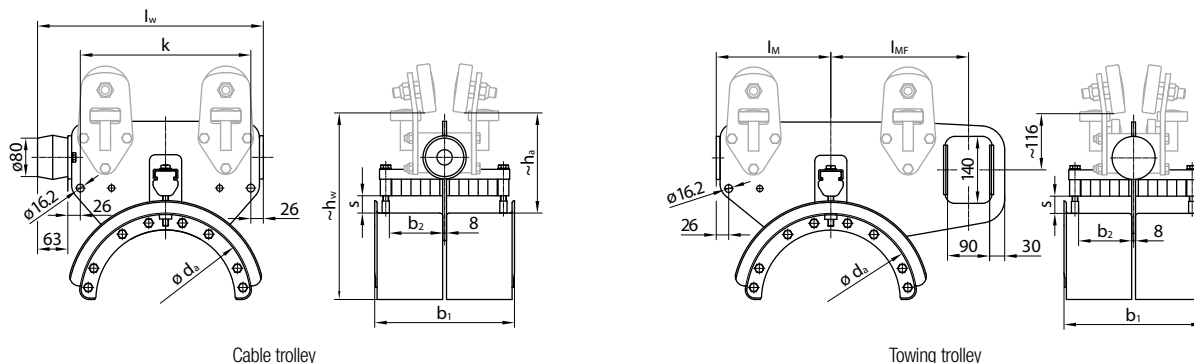
The Order No. of the appropriate towing clamp is:

036242-968666

For calculation and selection please refer to the Engineering Guideline KAT0300-0101.

Program 0360 with Main Rollers $\varnothing 80, 100, 112$ and 125 mm

Selection of Cable Trolleys and Towing Trolleys



Cable trolley

Towing trolley

Cable Trolley Underpart ¹⁾ Order No.	[kg]	Towing Trolley Underpart ¹⁾ Order No.	[kg]	d_a [mm]	l_w [mm]	b_1 [mm]	b_2 [mm]	s [mm]	k [mm]	Clamping Bar Version	h_a [mm]	h_w [mm]	l_M [mm]	l_{MF} [mm]
036221-62	10.8	036231-62	11.4	260	350	291	110	26	235	1	200	326	170	218
036221-64	12.6	036231-64	13.2			384	155			1				
036222-66	15.2	036232-66	15.6			532	200			2				
036222-68	16.3	036232-68	16.9			632	250			2				
036222-69	18.7	036232-69	17.8			772	320			2				
036221-82	14.9	036231-82	19.0	360	470	291	110	36	355	1	210	388	239	288
036221-84	17.2	036231-84	19.6			384	155			1				
036222-86	22.0	036232-86	23.9			532	200			2				
036222-88	23.9	036232-88	25.8			632	250			2				
036222-89	26.8	036232-89	28.7	460	590	772	320	46	475	2	220	448	310	310
036221-92	21.6	036231-92	23.9			291	110			1				
036221-94	23.3	036231-94	25.7			384	155			1				
036222-96	28.8	036232-96	31.1			532	200			2				
036222-98	30.9	036232-98	33.2			632	250			2				
036222-99	34.2	036232-99	36.5	772	320	2								

1) without running gear

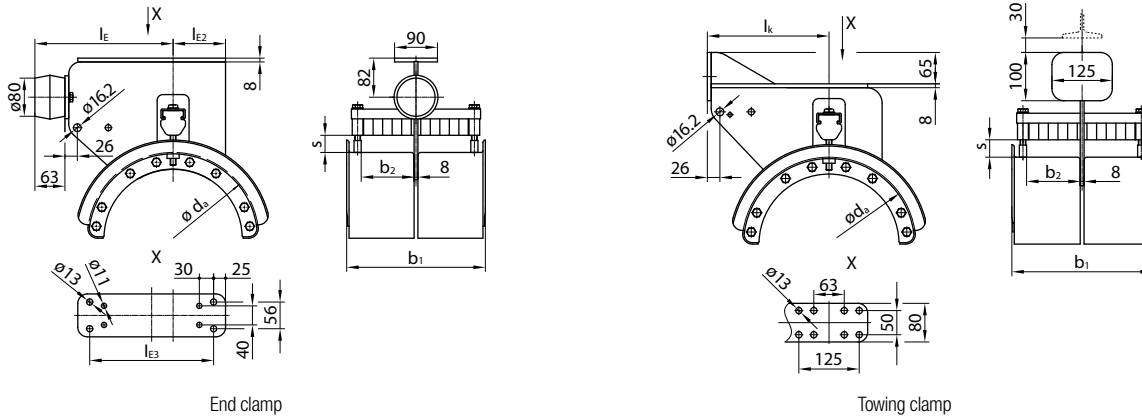
Notes

- The table only refers to the cable trolley or towing trolley underpart, the running gear must be selected and added. See page 18 of this catalog.
- The system components can be equipped with one or two additional supports. See page 17 of this catalog.

Conversion: 1 mm Δ 0.04 in | 1 kg Δ 2.20 lbs

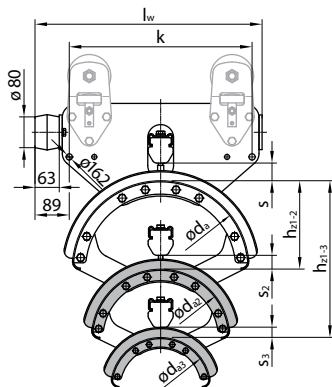
Program 0360 with Main Rollers $\varnothing 80, 100, 112$ and 125 mm

Selection of End Clamps and Towing Clamps



End Clamp Complete Order No.	[kg]	Towing Clamp Complete Order No.	[kg]	d_a	l_E	l_{E2}	l_{E3}	b_1	b_2	s	Clamping Bar Version	l_k
				[mm]	[mm]	[mm]	[mm]	[mm]	[mm]	[mm]		[mm]
036211-62	11.2	036041-62	10.0	260	220	81	160	291	110	26	1	182
036211-64	13.0	036041-64	11.8					384	155		1	
036212-66	15.4	036042-66	14.2					532	200		2	
036212-68	16.4	036042-68	15.6					632	250		2	
036212-69	18.9	036042-69	17.8	772	320	2						
036211-82	17.3	036041-82	15.3	360	290	110	260	291	110	36	1	252
036211-84	19.3	036041-84	17.4					384	155		1	
036212-86	23.6	036042-86	21.7					532	200		2	
036212-88	25.5	036042-88	23.9					632	250		2	
036212-89	28.0	036042-89	26.4	772	320	2						
036211-92	23.0	036041-92	20.6	460	361	125	350	291	110	46	1	322
036211-94	24.7	036041-94	22.4					384	155		1	
036212-96	30.2	036042-96	27.2					532	200		2	
036212-98	32.3	036042-98	30.0					632	250		2	
036212-99	35.6	036042-99	33.2	772	320	2						

Additional Supports



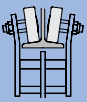
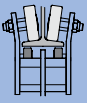
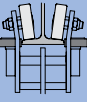
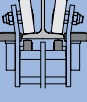
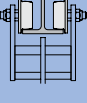
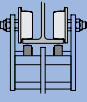
The support width as well as the clamping bar version of the additional support must correspond to the upper support of the cable trolley.

Additional Supports Order No.	[kg]	d_a	d_{a2}	d_{a3}	b_1	b_2	s_2	s_3	Clamping Bar Version	h_{z1-2}	h_{z1-3}
		[mm]	[mm]	[mm]	[mm]	[mm]	[mm]	[mm]		[mm]	[mm]
One Additional Support											
32	4.8	260	160	-	291	110	16	-	1	180	-
34	5.6				384	156			1		
62	10.9	360	260	-	291	110	26	-	1	178	-
64	13.0				384	155			1		
66	17.2				532	200			2		
68	19.1				632	250			2		
69	22.0	772	320	2							
82	11.9	460	360	-	291	110	36	-	1	205	-
84	14.0				384	155			1		
86	18.3				532	200			2		
88	20.2				632	250			2		
89	23.1	772	320	2							
Two Additional Supports											
8262	22.8	460	360	260	291	110	36	26	1	205	408
8464	27.0				384	155			1		
8666	35.5				532	200			2		
8868	39.3				632	250			2		
8969	45.1	772	320	2							

Program 0360

with Main Rollers $\varnothing 80$ and 100 mm

Selection of Running Gear

Running Gear		Order No.	Main Roller		Weight approx. [kg]	Parallel Flange	Preference Range I-beams				
			d [mm]	Material Bandage			I-beam Code	Tapered Flange	I-beam Code		
	Type H with cylindrical main rollers	511	80	Steel	8.3	W4x13	1110	S4x7.7	1014		
		541	80	Vulkollan	7.7			S5x10.0	1018		
		611	100	Steel	12.3	W4x13	1110	S4x7.7	1014		
		641	100	Vulkollan	11.8			S5x10.0	1018	S6x12.5	1022
	Type HG with cylindrical main rollers and anti-lift rollers	512	80	Steel	9.5	-	-	S4x7.7	1014		
		542	80	Vulkollan	8.1	-	-	S5x10.0	1018		
		612	100	Steel	13.8	W4x13	1110	S4x7.7	1014		
		642	100	Vulkollan	13.3			S5x10.0	1018	S6x12.5	1022
	Type HF with cylindrical main rollers and horizontal guide rollers	513	80	Steel	9.7	W4x13 W5x16	1110 1112	S4x7.7	1014		
		547	80	Vulkollan	8.3			S5x10.0	1018	S6x12.5	1022
		613	100	Steel	13.3	W4x13 W5x16	1110 1112	S7x15.3	1026		
		647	100	Vulkollan	12.8			S5x10.0	1018	S6x12.5	1022
	Type HFG with cylindrical main rollers, horizontal guide rollers and anti-lift rollers	514	80	Steel	9.8	W4x13 W5x16	1110 1112	S4x7.7	1014		
		548	80	Vulkollan	9.3			S5x10.0	1018		
		578	80	Adiprene	9.3			S6x12.5	1022	S7x15.3	1026
		614	100	Steel	14.3	W4x13 W5x16	1110 1112	S5x10.0	1018		
		648	100	Vulkollan	13.8			S6x12.5	1022	S7x15.3	1026
		678	100	Adiprene	13.8			S8x18.4	1030		
	Type S with flanged main rollers	531	80	Steel	9.9	W4x13 W5x16	1110 1112	S4x7.7	1014		
		631	100	Steel	16.0			S5x10.0	1018	S6x12.5	1022
	Type SG with flanged main rollers and anti-lift rollers	532	80	Steel	11.3	W4x13 W5x16	1110 1112	S4x7.7	1014		
		632	100	Steel	17.3			S5x10.0	1018	S6x12.5	1022

Note/design

- Main roller $\varnothing 80$ mm: anti-lift rollers $\varnothing 50$ mm and horizontal guide rollers $\varnothing 50$ mm made of steel.
- Main roller $\varnothing 100$ mm: anti-lift rollers $\varnothing 50$ mm and horizontal guide rollers $\varnothing 63$ mm made of steel.
- Other materials of the horizontal guide rollers, e.g. Vulkollan on request.
- The rollers are equipped with precision ball bearings and additional sealing disks (2RS1). The ball bearings are lifetime lubricated.
- Running gear for other I-beam types or beam sizes on request.

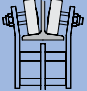
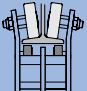
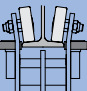
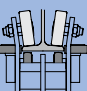
Optional:

Independent removable side shields for easy roller replacement from roller size $\varnothing 80$ (3 in)
add -5 at the end of the complete order no. e.g. 036222-968666-6481022-5

Program 0360

with Main Rollers \varnothing 112 and 125 mm

Selection of Running Gear

Running Gear		Order No.	Main Roller		Weight approx. [kg]	Parallel Flange	Preference Range I-beams		
			d [mm]	Material Bandage			I-beam Code	Tapered Flange	I-beam Code
	Type H with cylindrical main rollers	741	112	Vulkollan	14.4	-	-	S6x12.5	1022
		771	112	Adiprene	14.4	-	-	S7x15.3	1026
		811	125	Steel	21.0	-	-	S8x18.4	1030
		841	125	Vulkollan	18.2	-	-	S6x12.5	1022
		871	125	Adiprene	18.2	-	-	S7x15.3	1026
	Type HG with cylindrical main rollers and anti-lift rollers	742	112	Vulkollan	15.4	-	-	S6x12.5	1022
		772	112	Adiprene	15.4	-	-	S7x15.3	1026
		812	125	Steel	22.0	-	-	S8x18.4	1030
		842	125	Vulkollan	19.2	-	-	S6x12.5	1022
		872	125	Adiprene	19.2	-	-	S7x15.3	1026
	Type HF with cylindrical main rollers and horizontal guide rollers	747	112	Vulkollan	14.4	W4x13 W5x16	1110 1112	S6x12.5	1022
		777	112	Adiprene	14.4			S7x15.3	1026
		813	125	Steel	23.0	W4x13 W5x16	1110 1112	S8x18.4	1030
		847	125	Vulkollan	18.7			S6x12.5	1022
		877	125	Adiprene	18.7			S7x15.3	1026
	Type HFG with cylindrical main rollers, horizontal guide rollers and anti-lift rollers	748	112	Vulkollan	15.4	W4x13 W5x16	1110 1112	S6x12.5	1022
		778	112	Adiprene	15.4			S7x15.3	1026
		814	125	Steel	25.2	W4x13 W5x16	1110 1112	S8x18.4	1030
		848	125	Vulkollan	18.7			S6x12.5	1022
		878	125	Adiprene	18.7			S7x15.3	1026

Note/design

- The running gear of the towing trolley must always be equipped with anti-lift rollers.
- Main roller \varnothing 112 mm: anti-lift rollers \varnothing 50 mm and horizontal guide rollers \varnothing 63 mm made of steel
- Main roller \varnothing 125 mm: anti-lift rollers \varnothing 63 mm and horizontal guide rollers \varnothing 80 mm made of steel
- Other materials of the horizontal guide rollers, e.g. Vulkollan on request.
- The rollers are equipped with precision ball bearings and additional sealing disks (2RS1). The ball bearings are lifetime lubricated.
- Running gear for other I-beam types or beam sizes on request.

Optional:

Independent removable side shields for easy roller replacement from roller size \varnothing 80 (3 in)
add -5 at the end of the complete order no. e.g. 036222-968666-748-1030-5

Conversion: 1 mm \triangleq 0.04 in | 1 kg \triangleq 2.20 lbs



Program 0364 with Main Rollers \varnothing 100 and 112 mm

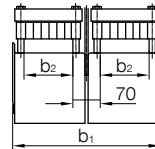
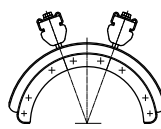
Single Layer Cable Trolley with Round Cables with a Load Capacity up to 125 kg (275 lbs)



For STS container cranes with rope-driven main trolley and catenary trolley. A connection between catenary trolley and festoon system by an additional towing trolley is required.

Technical details

Cable Supports	bolted to the center plate, lateral-loading and reinforced
Buffers	double-sided round buffer
Travel Speed max.	180 m/min (600 ft/min)
Load Capacity max.	125 kg (275 lbs)
Cable Trolley Underpart and Running Gear	hot-dipped galvanized steel
Fasteners	stainless steel
Temperature Range	-30°C to + 80°C (-22°F to + 176°F)



V-clamping
(divided)

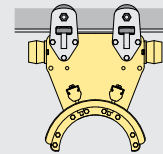
Ordering Example

Order No.

036423-83 - 748 - 1018

A cable trolley underpart with the following dimensions shall be used:

- Support diameter: $d_s = 360$ mm
- Clamping width: $b_2 = 125$ mm;
- Clamping height: $s = 36$ mm
- Order No.: 036423-83 (chosen from catalog page 22)

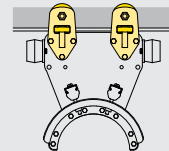


The following running gear has been chosen:

Type HFG, cylindrical main rollers \varnothing 112 mm with Vulkollan bandage

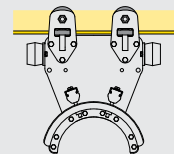
- with horizontal guide rollers made of steel
- with anti-lift rollers made of steel

Order No. 748 (chosen from catalog page 23)



The following track beam has been chosen:

- S5x10.0
- I-beam code: 1018 (chosen from catalog page 23)



The Order No. of the appropriate towing trolley is
the running gear must always be equipped with anti-lift rollers:

036433-83-748-1018

The Order No. of the appropriate towing trolley
for the connection to the catenary trolley is:

036453-83-748-1018

The Order No. of the appropriate end clamp is:

036413-83

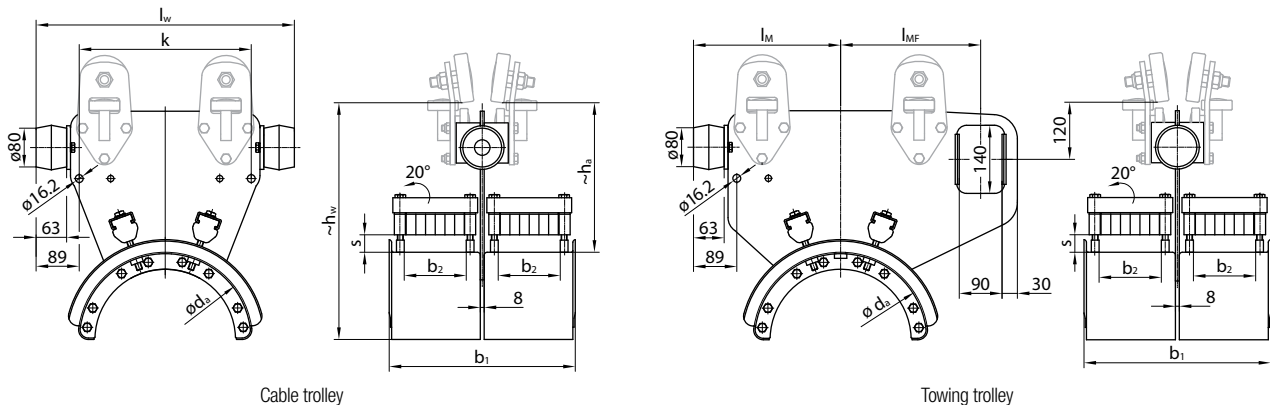
As an alternative to the towing trolley a towing clamp can be used.
The Order No. of the appropriate towing clamp is:

036443-83

For calculation and selection please refer to the Engineering Guideline KAT0300-0101.

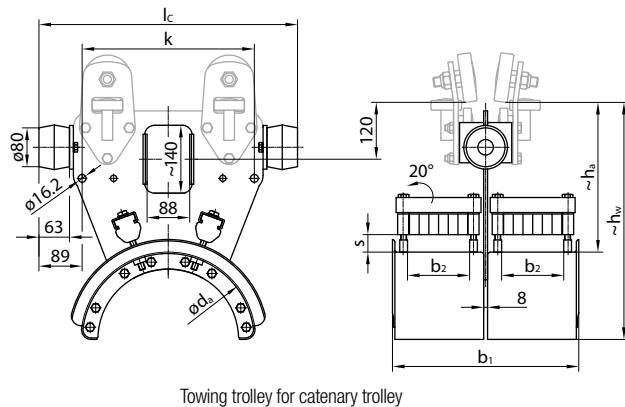
Program 0364 with Main Rollers $\varnothing 100$ and 112 mm

Selection of Cable Trolleys, Towing Trolleys and Towing Trolleys for Catenary Trolley



Cable Trolley Underpart ¹⁾ Order No.	[kg]	Towing Trolley Underpart ¹⁾ Order No.	[kg]	d_a	l_w	b_1	b_2	s	k	h_a	h_w	l_M	l_{MF}
				[mm]	[mm]	[mm]	[mm]	[mm]	[mm]	[mm]	[mm]	[mm]	[mm]
036423-83	21	036433-83	25	360	533	384	125	36	355	320	500	302	288
036423-86	25	036433-86	29			532	200						
036423-88	29	036433-88	31			632	250						
036423-93	24	036433-93	26	460	653	384	125	46	475	220	450	372	358
036423-96	30	036433-96	31			532	200						
036423-98	45	036433-98	46			632	250						

1) without running gear



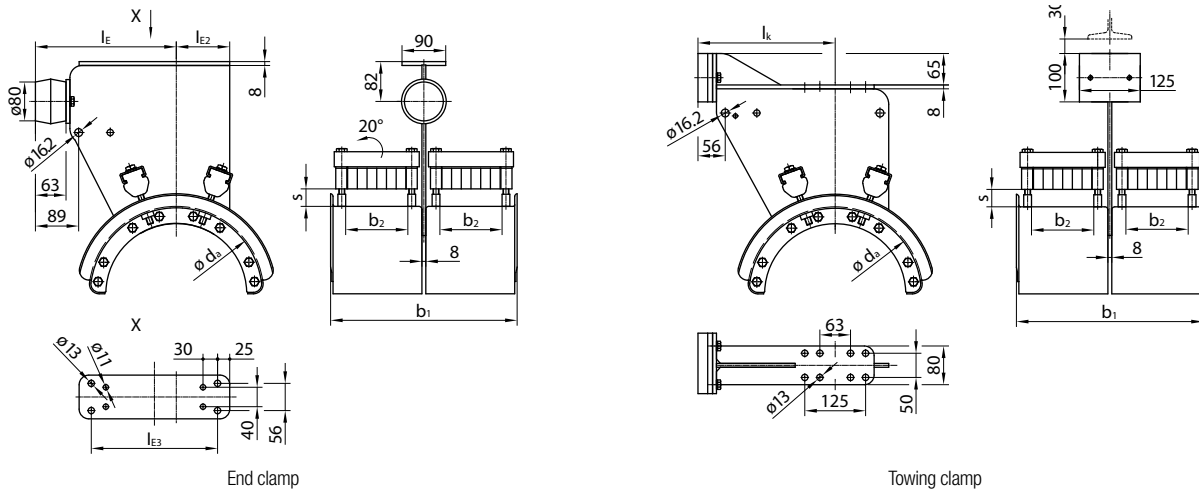
Towing Trolley Underpart for Catenary Trolley without Running Gear Order No.	[kg]	d_a	l_c	b_1	b_2	s	k	h_a	h_w
		[mm]	[mm]	[mm]	[mm]	[mm]	[mm]	[mm]	[mm]
036453-83	21	360	533	384	125	36	355	320	500
036453-86	25			532	200				
036453-88	29			632	250				
036453-93	34	460	653	384	125	46	475	220	450
036453-96	38			532	200				
036453-98	46			632	250				

Note/design

- The table only refers to the cable trolley or towing trolley underpart, the running gear must be selected and added. See page 23 of this catalog.
- Additional supports are not available in this program.

Program 0364 with Main Rollers $\varnothing 100$ and 112 mm

Selection of End Clamps and Towing Clamps

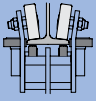


End clamp

Towing clamp

End Clamp Complete Order No.	[kg]	Towing Clamp Complete Order No.	[kg]	d_a	l_E	l_{E2}	l_{E3}	b_1	b_2	s	l_k
				[mm]	[mm]	[mm]	[mm]	[mm]	[mm]	[mm]	[mm]
036413-83	21.0	036443-83	21.0	360	290	110	260	384	125	36	282
036413-86	25.0	036443-86	25.0					532	200		
036413-88	36.0	036443-88	36.0					632	250		
036413-93	20.0	036443-93	22.0	460	361	125	350	384	125	46	352
036413-96	24.0	036443-96	25.0					532	200		
036413-98	44.5	036443-98	44.0					632	250		

Selection of Running Gear

Running Gear		Order No.	Main Roller Material Bandage	Weight approx. [kg]	Parallel Flange	Preference Range I-beams		I-beam Code	
			d [mm]			I-beam Code	Tapered Flange		
	Type HFG with cylindrical main rollers, horizontal guide rollers and anti-lift rollers	648	100	Vulkollan	13.8	W4x13 W5x16	1110	S5x10.0	1018
		678	100	Adiprene	13.8		1112	S6x12.5	1022
		748	112	Vulkollan	15.4	W4x13 W5x16	1110	S5x10.0	1018
		778	112	Adiprene	15.4		1112	S6x12.5	1022

Note/design

- Main roller $\varnothing 100$ mm: anti-lift rollers $\varnothing 50$ mm and horizontal guide rollers $\varnothing 63$ mm made of steel
- Main roller $\varnothing 112$ mm: anti-lift rollers $\varnothing 50$ mm and horizontal guide rollers $\varnothing 63$ mm made of steel
- Other materials of the horizontal guide rollers, e.g. Vulkollan on request.
- The rollers are equipped with precision ball bearings and additional sealing disks (2RS1). The ball bearings are lifetime lubricated.
- Running gear for other I-beam types or beam sizes on request.

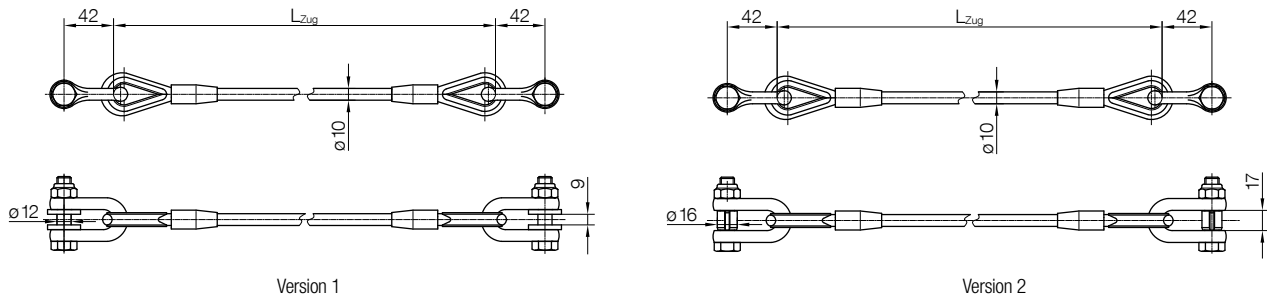
Optional:

Independent removable side shields for easy roller replacement from roller size $\varnothing 80$ (3 in) add -5 at the end of the complete order no. e.g. 036423-84-748-1030-5

Conversion: 1 mm \triangleq 0.04 in | 1 kg \triangleq 2.20 lbs

Accessories for Program 0350, 0360 and 0364

Towing Ropes

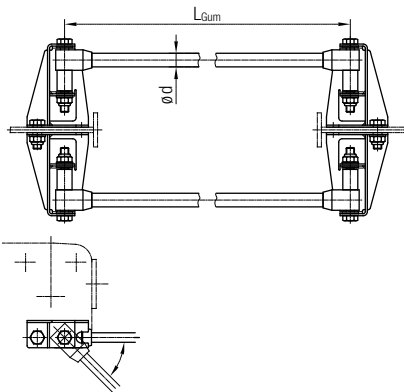


Order No.	d [mm]	Material			Version	Prog.	for Main Rollers ø d [mm]
		Rope	Shackle	Fasteners			
031962	10	Galvanized steel PVC-coated	Galvanized steel	Galvanized steel/ aluminum	1	350 360	50, 63, 80, 100
031963							80, 100, 112, 125
					2	360 364	100, 112

Notes

- We recommend the installation of towing ropes for a speed from 50 m/min or a travel distance > 30 m.
- The towing ropes are PVC-coated for a better protection against corrosion and to prevent the cables from damage.
- For the calculation of the lengths please refer to our Engineering Guideline.
- In case of order please state the lengths L_{zug} of the respective towing ropes.

Damping Devices



Technical details

- Shock cord: rubber with plastic plait
- Console: hot-dipped galvanized steel
- Fasteners: stainless steel

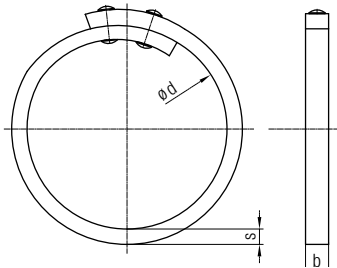
Notes

- We recommend the installation of damping devices for high speed and/or short cable loops.
- For the calculation of the length please refer to our Engineering Guideline.
- In case of order please state the length of the respective shock cords.
- Number and diameter are defined by weight load, cable loop and speed.

Order No.	Number of Shock Cords	D_{Gum} [mm]	Program	for Main Rollers ø d [mm]
031966	2	14	0350	50, 63, 80, 100
031970-2	2	20	0350	50, 63, 80, 100
031966	2	14	0360	50, 63
031970-2	2	20	0360	50, 63
031976-2	2	20	0360, 0364	80, 100, 112, 125
031977-2	4	20	0360, 0364	80, 100, 112, 125
031978-2	6	20	0360, 0364	80, 100, 112, 125

Accessories for Program 0350, 0360 and 0364

Cable Organizers for Cable Loops

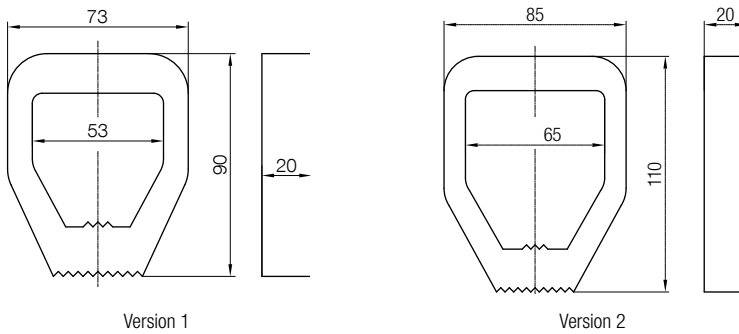


Order No.	$\varnothing D_{FR}$ [mm]	B_{FR} [mm]	S_{FR} [mm]	Material	Fasteners	Weight [kg]
031942-0300	300	30	20	Rubber	Stainless steel	0.4
031942-0700	700	50	20			0.8

Note

For cable loops > 4 m, the cable organizer in addition to the flat and round cable clamps prevents an expansion of the cables at the lower section of the cable loop.

Additional Clamping Pieces for Round Cable Clamps



Note

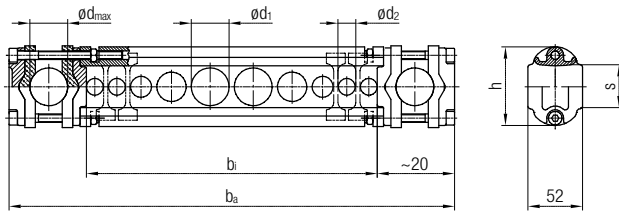
Differences in diameter between adjacent cables of more than 15 mm require additional clamping pieces for a tight clamping.

Order No.	For Systems with Main Roller Diameter d [mm]	Version	Material	Weight [kg]
031899-053x020/514	50 and 63	1	Rubber	0.06
031899-065x020/514	80, 100, 112 and 125	2		0.08

Conversion: 1 mm \triangleq 0.04 in | 1 kg \triangleq 2.20 lbs

Accessories for Program 0360 and 0364

Round Cable Clamps



Technical details

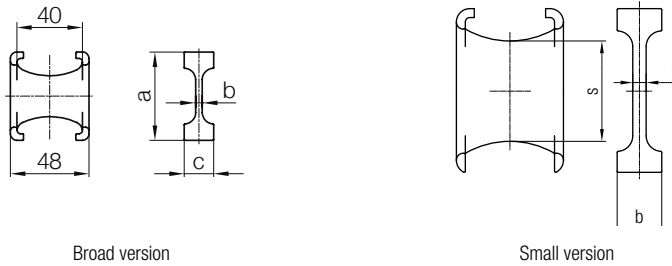
- Clamping: aluminum/rubber
- Guiding profile: aluminum
- Fasteners: stainless steel

Order No.	d_{RLmax} [mm]	b_{RK1} [mm]	b_{RK2} [mm]	h_{RK} [mm]	s_{RK} [mm]	$\sum d_{RL}^{1)}$ [mm]	Weight [kg]
031941-026x100/400	26	236	100	64	30	34	0.95
031941-026x150/400		286	150				1.07
031941-026x200/400		336	200				1.09
031941-026x250/400		386	250				1.31
031941-026x300/400		436	300				1.45
031941-026x350/400		486	350				1.57
031941-026x400/400		536	400				1.71
031941-026x450/400		586	450				1.83
031941-026x500/400		636	500				1.95
031941-026x550/400		686	550				2.07
031941-026x600/400		736	600				2.19
031941-026x650/400		786	650				2.33
031941-026x700/400		836	700				2.45
031941-036x100/400	36	256	100	74	40	46	1.04
031941-036x150/400		306	150				1.16
031941-036x200/400		356	200				1.28
031941-036x250/400		406	250				1.40
031941-036x300/400		456	300				1.54
031941-036x350/400		506	350				1.66
031941-036x400/400		556	400				1.80
031941-036x450/400		606	450				1.92
031941-036x500/400		656	500				2.04
031941-036x550/400		706	550				2.16
031941-036x600/400		756	600				2.28
031941-036x650/400		806	650				2.42
031941-036x700/400		856	700				2.54
031941-046x100/400	46	276	100	84	50	56	2.37
031941-046x150/400		326	150				2.49
031941-046x200/400		376	200				2.61
031941-046x250/400		426	250				2.73
031941-046x300/400		476	300				2.87
031941-046x350/400		526	350				2.99
031941-046x400/400		576	400				3.13
031941-046x450/400		626	450				3.25
031941-046x500/400		676	500				3.37
031941-046x550/400		726	550				3.50
031941-046x600/400		776	600				3.63
031941-046x650/400		826	650				3.75
031941-046x700/400		876	700				3.87

1) If the total of two adjacent cables ($d_{RL1} + d_{RL2}$) is smaller than the value $\varnothing d_{RL}$ of the table, spacers are required to separate the cables.
See page 27.

Accessories for Program 0350, 0360 and 0364

Spacers

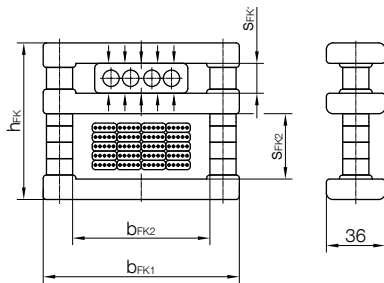


Order No.	S_{FK} [mm]	t_{DS} [mm]	b_{DS} [mm]	Appropriate Cable Clamp	Material	Version	Weight [kg]
031946-26	30	4	18	031941-026x...	Plastic	small	0.010
031946-36	40	5	19	031941-036x...			0.015
031946-46	50	6	20	031941-046x...			0.025
031947-26	30	4	26	031941-026x...	Plastic	broad	0.015
031947-36	40	5	27	031941-036x...			0.020
031947-46	50	6	28	031941-046x...			0.025

Notes

The above drawings are examples for illustration only.
Small version for cables with outer diameter smaller 14 mm and larger 22 mm.
Broad version for cables with outer diameter larger 14 mm and smaller 22 mm.

Flat Cable Clamps



Notes

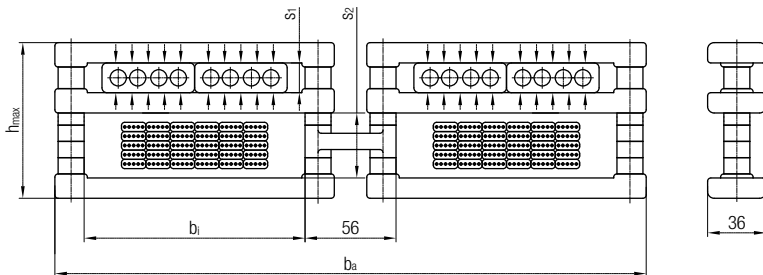
- By changing the distance tubes from window S_{FK2} to window S_{FK1} , the flat cable clamp can be adjusted to fit the cable package.
- The window with the dimension S_{FK2} must be adjusted to an appropriate dimension, so that the cables can move with sufficient clearance (> 15 mm).

Order No.	b_{FK2} [mm]	b_{FK1} [mm]	$S_{FK1} + S_{FK2}$ [mm]	S_{FK1} min. [mm]	h_{FK} max. [mm]	Weight [kg]
031953-084x045/400	84	120	45	5	80	0.18
031953-084x055/400			55		90	0.19
031953-084x065/400			65		100	0.21
031953-084x075/400			75		110	0.22
031953-084x085/400			85		120	0.23
031953-136x045/400	136	172	45	5	80	0.24
031953-136x055/400			55		90	0.25
031953-136x065/400			65		100	0.27
031953-136x075/400			75		110	0.28
031953-136x085/400			85		120	0.29

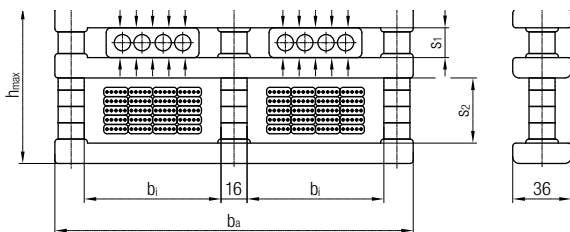
Conversion: 1 mm \triangleq 0.04 in | 1 kg \triangleq 2.20 lbs

Accessories for Program 0350

Flat Cable Clamps



Order No.	b _{FK2} [mm]	b _{FK1} [mm]	b _{FK3} [mm]	S _{FK1} + S _{FK2} [mm]		S _{FK1} min. [mm]	h _{FK} max. [mm]	Weight [kg]
031954-084x045/400	84	118	257	45	+2.5	5	80	0.42
031954-084x055/400				55			90	0.44
031954-084x065/400				65			100	0.46
031954-084x075/400				75			110	0.48
031954-084x085/400				85			120	0.52
031954-136x045/400	136	172	364	45	+2.5	5	80	0.53
031954-136x055/400				55			90	0.57
031954-136x065/400				65			100	0.60
031954-136x075/400				75			110	0.63
031954-103x085/400				85			120	0.66
031954-184x045/400	184	220	460	45	+2.5	5	80	0.85
031954-184x055/400				55			90	0.88
031954-184x065/400				65			100	0.91
031954-184x075/400				75			110	0.94
031954-184x085/400				85			120	0.97

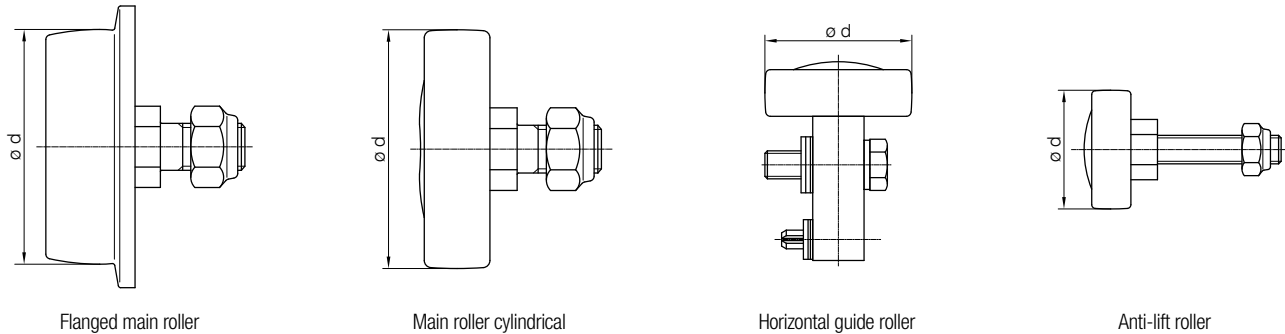


Order No.	b _{FK2} [mm]	b _{FK1} [mm]	S _{FK1} + S _{FK2} [mm]		S _{FK1} min. [mm]	h _{FK} max. [mm]	Weight [kg]
031955-084x045/400	84	220	45	+2.5	5	80	0.43
031955-084x055/400			55			90	0.44
031955-084x065/400			65			100	0.46
031955-084x075/400			75			110	0.48
031955-084x085/400			85			120	0.49
031955-103x045/400	103	258	45	+2.5	5	80	0.46
031955-103x055/400			55			90	0.47
031955-103x065/400			65			100	0.49
031955-103x075/400			75			110	0.51
031955-103x085/400			85			120	0.52

Conversion: 1 mm \triangleq 0.04 in | 1 kg \triangleq 2.20 lbs

Wear Parts for Program 0350, 0360 and 0364

Replacement Rollers for Running Gear



Replacement Rollers for Running Gear $\varnothing 50$ mm and $\varnothing 63$ mm

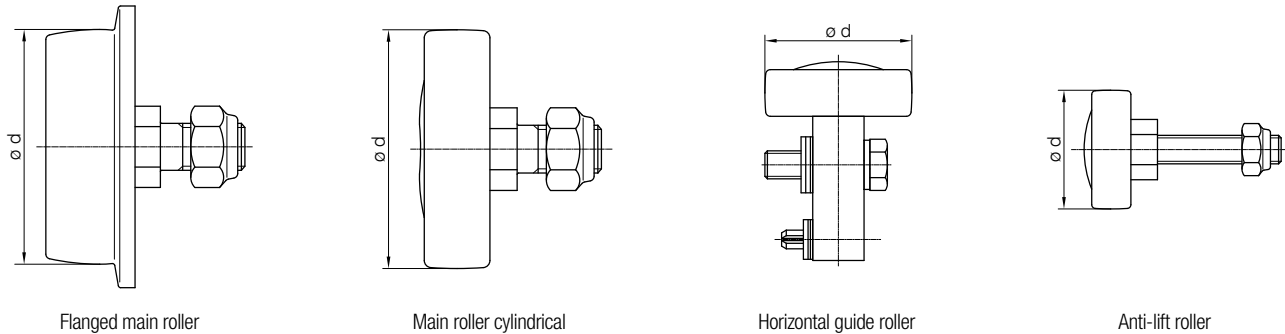
Running Gear Type		Order No.	Description	Rollers			For I-beams	
				d [mm]	Material Bandage	Weight approx. [kg]	Parallel Flange	Tapered Flange
 H	 HG	030102-050.2	Main roller cylindrical	50	Steel	0.28	-	S3x5.7
		030103-050.2		50	Vulkollan	0.21	-	S4x5.7
		030102-063.1		63	Steel	0.30	-	S3x5.7
		030103-063.1		63	Vulkollan	0.26		S4x5.7
		030108-040.1	Anti-lift roller	40	Steel	0.13	-	-
 HF	 HFG	030102-050.3	Main roller cylindrical	50	Steel	0.27	W4x13 W5x16	S3x5.7- S6x12.5
		030103-050.3		50	Vulkollan	0.20		
		030102-063.3		63	Steel	0.48	W4x13 W5x16	S3x5.7- S6x12.5
		030103-063.3		63	Vulkollan	0.28		
		030105-040	Horizontal guide roller	40	Steel	0.21	W4x13 W5x16	S3x5.7- S6x12.5
		030108-040.2	Anti-lift roller	40	Steel	0.13		
 S	 SG	030101-050	Flanged main roller	50	Steel	0.42	W4x13 W5x16	S3x5.7- S6x12.5
		030101-063		63	Steel	0.74		
		030108-040.1	Anti-lift roller	40	Steel	0.13	W4x13 W5x16	S3x5.7- S6x12.5

Replacement Rollers for Running Gear $\varnothing 80$ mm and $\varnothing 100$ mm

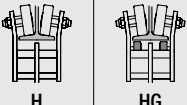
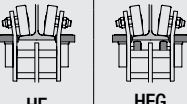
Running Gear Type		Order No.	Description	Rollers			For I-beams	
				d [mm]	Material Bandage	Weight approx. [kg]	Parallel Flange	Tapered Flange
 H	 HG	030102-080.1	Main roller cylindrical	80	Steel	0.65	-	S4x5.7
		030103-080.1		80	Vulkollan	0.55		S5x10
		030102-100.1		100	Steel	1.13	-	S6x12.5
		030103-100.1		100	Vulkollan	1.00		
 HF	 HFG	030108-050.1	Anti-lift roller	50	Steel	0.31	-	S4x5.7- S6x12.5
		030102-080.2	Main roller cylindrical	80	Steel	0.64	W4x13 W5x16	S4x5.7- S7x15.3
		030103-080.2		80	Vulkollan	0.36		
		030104-080.2		80	Adiprene	0.36		
		030105-050.1	Horizontal guide roller	50	Steel	0.44	W4x13 W5x16	S5x10- S8x18.4
		030102-100.2	Main roller cylindrical	100	Steel	1.10		
		030103-100.2		100	Vulkollan	0.98		
		030104-100.2		100	Adiprene	0.98		
		030105-063.1	Horizontal guide roller	63	Steel	0.43	W4x13 W5x16	S4x5.7- S8x18.4
030108-050.1	Anti-lift roller	50	Steel	0.31				
 S	 SG	030101-080	Flanged main roller	80	Steel	1.27	W4x13 W5x16	S4x5.7- S7x15.3
		030101-100		100	Steel	2.25		S5x10- S8x18.4
		030108-050.1	Anti-lift roller	50	Steel	0.31	W4x13 W5x16	S4x5.7- S8x18.4

Wear Parts for Program 0350, 0360 and 0364

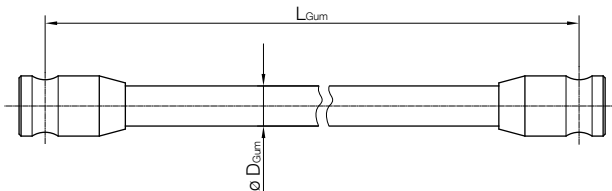
Replacement Rollers for Running Gear



Replacement Rollers for Running Gear $\phi 112$ mm and $\phi 125$ mm

Running Gear Type		Order No.	Description	Rollers			For I-beams	
				d [mm]	Material Bandage	Weight approx. [kg]	Parallel Flange	Tapered Flange
 H HG	030103-112.1	Main roller cylindrical	112	Vulkollan	1.00	-	S6x12.5	
	030104-112.1		112	Adiprene	1.00			
	030103-112.2		112	Vulkollan	1.00			
	030104-112.2		112	Adiprene	1.00			
	030108-050.1	Anti-lift roller	50	Steel	0.27	-	S6x12.5- S8x18.4	
	030102-125.1	Main roller cylindrical	125	Steel	3.00	-	S7x15.3 S8x18.4	
	030103-125.1		125	Vulkollan	1.11			
	030104-125.1		125	Adiprene	1.11			
030108-063.1	Anti-lift roller	63	Steel	0.50	-	-		
 HF HFG	030103-112.2	Main roller cylindrical	112	Vulkollan	1.00	W4x13	S6x12.5- S8x18.4	
	030104-112.2		112	Adiprene	1.00			
	030105-063.1	Horizontal guide roller	63	Steel	0.63			
	030108-050.1	Anti-lift roller	50	Steel	0.50			
	030102-125.2	Main roller cylindrical	125	Steel	3.00	W4x13	S7x15.3 S8x18.4	
	030103-125.2		125	Vulkollan	1.20			
	030104-125.2		125	Adiprene	1.20			
	030105-080.1	Horizontal guide roller	80	Steel	0.82	-	-	
030108-063.1	Anti-lift roller	63	Steel	0.50	-	-		

Shock Cords



Technical details

- Shock cord: rubber with plastic plait
- Fasteners: stainless steel/hot-dipped galvanized steel

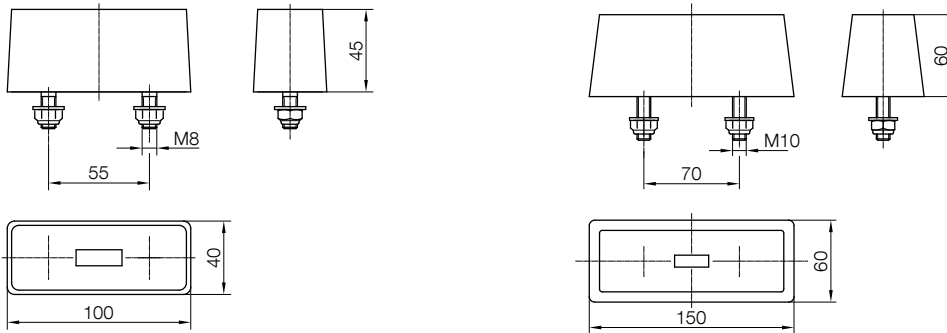
Note

In case of order please state the lengths L_{Gum} of the respective shock cords.

Order No.	ϕD_{Gum} [mm]	Weight [kg/m]
031987	14	0.2
031989-2	20	0.4

Wear Parts for Program 0350, 0360 and 0364

Rectangular Buffer



Rectangular buffer for cable trolleys

Rectangular buffer for end clamps

Program 0350, Main Rollers \varnothing 50 mm up to \varnothing 100 mm

Order No.	Shore Hardness A	Material	Weight [kg]	Component
031980-045x100/517	70	Rubber	0.5	Cable trolley
031980-060x150/617	70		0.7	End clamp

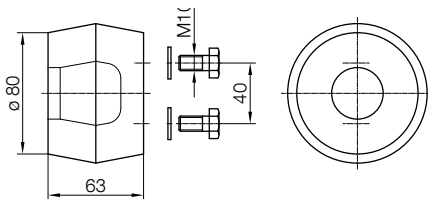
Program 0360, Main Rollers \varnothing 50 mm up to \varnothing 63 mm

Order No.	Shore Hardness A	Material	Weight [kg]	Component
031980-045x100/517	70	Rubber	0.5	Cable trolley
031980-060x150/617	70		0.7	End clamp

Notes

- Rollers, shock cords and buffers are maintenance items and must be inspected and/or replaced regularly.
- Please follow our maintenance instructions.

Round Buffer



Order No.	Shore Hardness A	Material	Weight [kg]	Program	For Main Roller Diameter d [mm]
031980-080x063/514	40	Rubber	0.5	0360	80 - 125
031980-080x063/517	70		0.5	0364	100 - 112

Notes

- Rollers, shock cords and buffers are maintenance items and must be inspected and/or replaced regularly.
- Please follow our maintenance instructions.

Conversion: 1 mm \approx 0.04 in | 1 kg \approx 2.20 lbs

Spare Parts for Program 0350, 0360 and 0364

Cable Supports including Clamping Bar



- Consisting of:**
- 2 x cable support
 - 2 x clamping bar
 - Fasteners

Clamping Bars (Complete)



- Consisting of:**
- C-Rail
 - Clamping rubber
 - Fasteners

Side Shields (Complete)



- Consisting of:**
- Side shield
 - Rollers assembled

Running Gears (Complete)



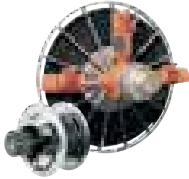
- Consisting of:**
- 4 x side shields (complete)
 - Distance pieces
 - Fasteners

Notes

- Spare parts are parts that are not subject to natural wear and are usually damaged by outside influence.
- In the case that a spare item is required, please provide the system component (e.g. cable trolley) for which the replacement part is required together with the item's designation.

Your Applications – our Solutions

Cable Trolleys from Conductix-Wampfler represent only one of the many solutions made possible by the broad spectrum of Conductix-Wampfler components for the transport of energy, data and fluid media. The solutions we deliver for your applications are based on your specific requirements. In many cases, a combination of several different Conductix-Wampfler systems can prove advantageous. You can count on all of Conductix-Wampfler's Business Units for hands-on engineering support - coupled with the perfect solution to meet your energy management and control needs.



Cable reels

Motorized reels and spring reels by Conductix-Wampfler hold their own wherever energy, data and media have to cover the most diverse distances within a short amount of time - in all directions, fast and safe.



Festoon systems

It's hard to imagine Conductix-Wampfler cable trolleys not being used in virtually every industrial application. They're reliable and robust and available in an enormous variety of dimensions and designs.



Conductor rails

Whether they're enclosed conductor rails or expandable single-pole systems, the proven conductor rails by Conductix-Wampfler reliably move people and material.



Non-insulated conductor rails

Extremely robust, non-insulated conductor rails with copper heads or stainless steel surfaces provide the ideal basis for rough applications, for example in steel mills or shipyards.



Energy guiding chains

The "Jack of all trades" when it comes to transferring energy, data, air and fluid hoses. With their wide range, these energy guiding chains are the ideal solution for many industrial applications.



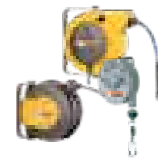
Slip ring assemblies

Whenever things are really "moving in circles", the proven slip ring assemblies by Conductix-Wampfler ensure the flawless transfer of energy and data. Here, everything revolves around flexibility and reliability!



Inductive Power Transfer IPT®

The no-contact system for transferring energy and data. For all tasks that depend on high speeds and absolute resistance to wear.



Reels, retractors and balancers

Whether for hoses or cables, as classical reels or high-precision positioning aids for tools, our range of reels and spring balancers take the load off your shoulders.



Jib boom

Complete with tool transporters, reels, or an entire media supply system – here, safety and flexibility are key to the completion of difficult tasks.



Conveyor systems

Whether manual, semiautomatic or with Power & Free – flexibility is achieved with full customization concerning layout and location.

www.conductix.com

Conductix-Wampfler GmbH

Rheinstrasse 27+33
79576 Weil am Rhein
Germany

Hotline

Phone +49 (0) 7621 662-222

Phone +49 (0) 7621 662-0

Fax +49 (0) 7621 662-144

info.de@conductix.com

www.conductix.com



DELACHAUX GROUP