

Product range Powerline 2nd Generation

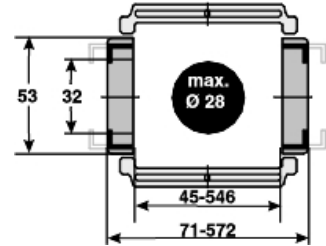
MP 32.2



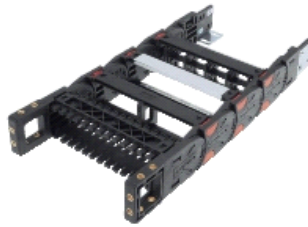
Internal height: 32 mm
 Internal widths: 45-600 mm
 Radii: 80-250 mm

Ideal operating conditions

- Extreme accelerations
- Extreme speeds
- Very high additional loads
- Can be opened on both sides
- Long travel distances
- Extreme self-supporting lengths



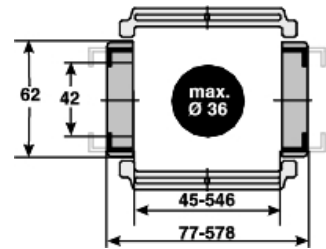
MP 41.2



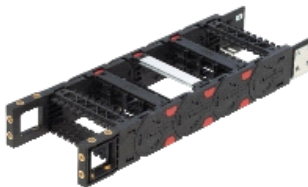
Internal height: 42 mm
 Internal widths: 45-600 mm
 Radii: 90-300 mm

Ideal operating conditions

- Extreme accelerations
- Extreme speeds
- Very high additional loads
- Can be opened on both sides
- Aluminium frame bridge in variable lengths
- Flexible internal separation



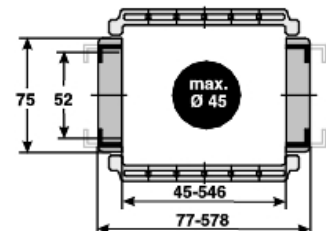
MP 52.2



Internal height: 52 mm
 Internal widths: 45-600 mm
 Radii: 100-350 mm

Ideal operating conditions

- Extreme accelerations
- Extreme speeds
- Very high additional loads
- Can be opened on both sides
- Aluminium



- frame bridge
in variable
lengths
- Flexible
internal
separation
 - Version
with/without
bias
-