

M-LINE on uusi tuoteperhe jokaiseen sovellukseen!

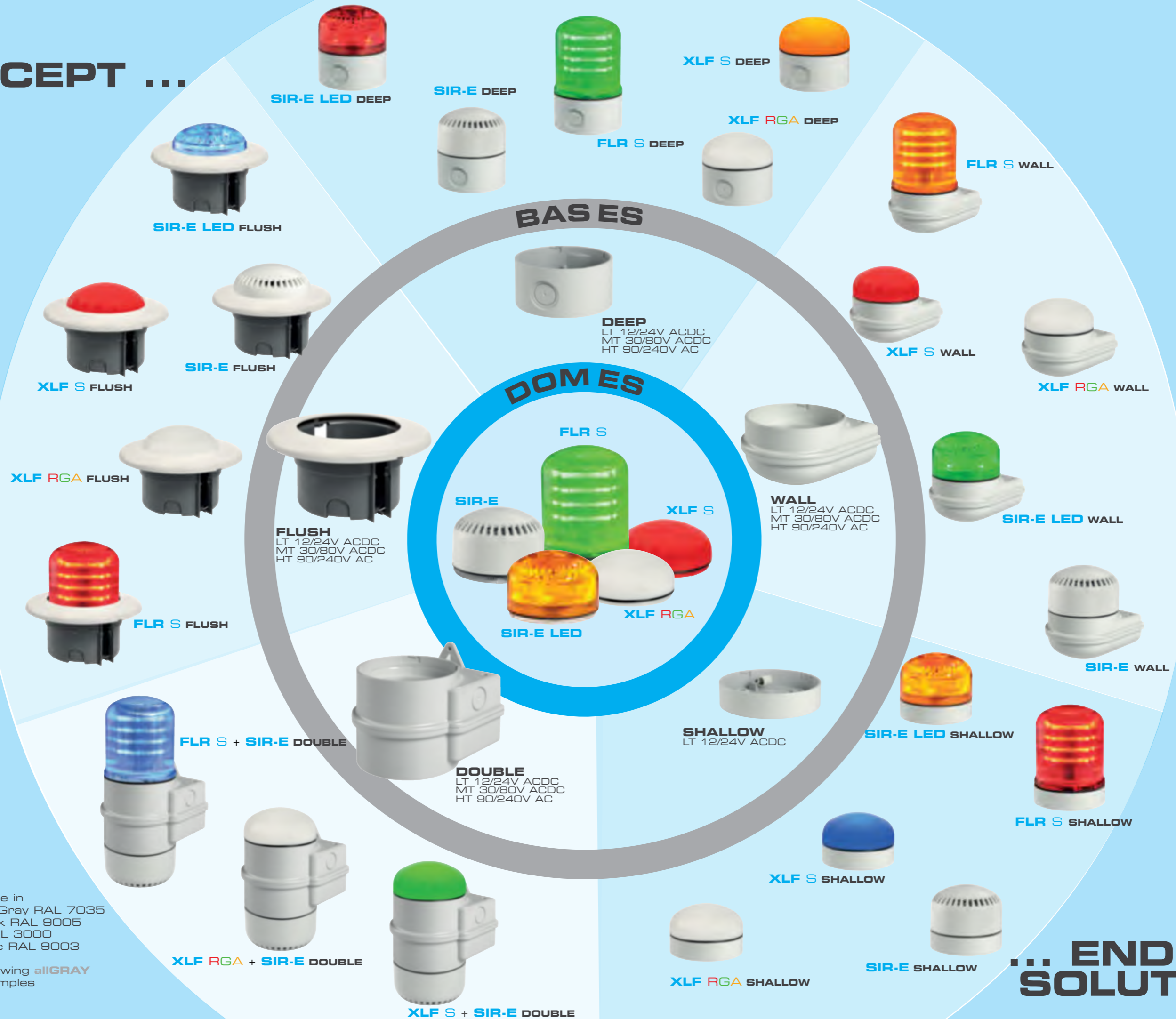
Murrin avaintuotteen Sirenan uutuustuoteperhe M-Line on häikäisevän nerokas! Hälytysvalo- ja hälytys sireenikomponentit ovat täysin räätälöitynä tarpeidenne mukaan. Kaikki alustaosat ovat yhteensopivia valo- ja äänikupujen kanssa. Äänitasot ja valoeffektit vaihtuvat helposti dip-kytkintä säätämällä.

M-Line kustannustehokkaat LED-tuotteet ovat nopeita asentaa, koko modulaarinen tuoteperhe on ulkoasenteinen (lämpötila alkaen – 30 °C! IP65-tiivis) ja ääntä lähtee tarvittaessa jopa 105 dB.

Lisätietoja tuotteista saatte Murrin teknisestä myynnistä, oman alueenne myynnistä vastaavalta sekä osastoltamme B-261 Jyväskylän Sähkö, Tele, Valo ja AV 2012 –messuilla 1.-3.2.2012.



ONE CONCEPT ...



All bases available in
allGRAY - Light Gray RAL 7035
allBLACK - Black RAL 9005
allRED - Red RAL 3000
allWHITE - White RAL 9003

Chart above showing **allGRAY** combination examples

... ENDLESS SOLUTIONS

MLINE

Four product ranges to guarantee maximum adaptability for the needs of the end-users

MLINE modular range allows installing any of the multifunctional modules on each of the modular bases. The number of applications for **MLINE** are endless; the high quality of the products, together with the modular and multifunctional technologies allow these products to be installed in Industrial, Civil, Fire Alarm and Commercial sectors.

Sirena understands that each industry follows precise rules and requirements and has created four color lines to better allow end users and professionals to benefit from highly customizable products, to the point that each device can be considered tailor-made for each application.

Sirena's product are engineered to fulfill end-users requirements, not vice-versa... welcome to the MLINE world...



allGRAY Industrial

allGRAY range has been developed to fulfill the Industrial sector requirements. Its light gray color (RAL 7035) allows to install **MLINE** products without interfering with the rest of the installation, remaining in line with the typical coloring of connection boxes, enclosures, panels, etc. allowing Professionals to deliver an added value to their job



allBLACK Industrial

allBLACK range allows to satisfy all those requests from the Industrial sector where black color is required. This range (RAL 9005) allows preserving the aesthetic of existing installations where black color is present. allBLACK is also the ideal choice for Machine Builders looking for a device which is unique, elegant and functional, preserving the added value of their important projects



allRED Fire Alarm

allRED range has been developed to satisfy all requirements from the Fire Alarm industry where red color is very often a fixed requirement. allRED (RAL 3000) range complements with class and elegance the existing fire alarm installations guaranteeing top functionality and the best aesthetics on the market



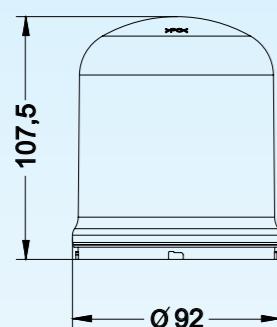
allWHITE Civil

allWHITE range has been developed to specifically satisfy aesthetic requirements from the Civil and Commercial installations industry. These devices are extremely pragmatic, elegant and multifunctional, allowing being discretely installed increasing aesthetics while preserving all added values created by architects and design teams. Available in white (RAL 9003), this range is also indicated for Machine Builders that see their products destined to civil or commercial environments





	LT base	MT base		HT base		
V $\overline{\text{---}}$	12:24	30:80		-		
V \sim	-	-		90:240		
mA	510	330	300	110	100	70
Flash/min. 0 / 3F: 85±10	r.p.m. 140±10		IP 65			
On $\overline{\text{---}}$	°C -30+50	PC	Self-extinguishing			



Multifunctional LED beacon with high optical performances. Developed with a multilevel technology, the device allows three separate lighting effects (steady, rotating, flashing) controllable via separate electric contacts.

KEY CHARACTERISTICS

- **Multifunction:** 3 separate functions (Steady, Rotating and Flashing) controllable independently via separate electric contacts
- **High optical performances**
 - **Steady:** a deep and rich light source ideal for attracting attention yet without disturbing
 - **Flashing:** a triple-flash strobe effect ideal for all applications where an immediate attention gain is mandatory
 - **Rotating:** a unique rotating effect which perfectly simulates the traditional rotating beacons yet without moving parts hence enormously enhancing product life time
- **Four colors available:** red, amber, green and blue
- **SMD LED technology:** longer lifetime and better resistance to vibrations
- **High IP 65 rating:** also excellent for outdoor applications

MODULARITY

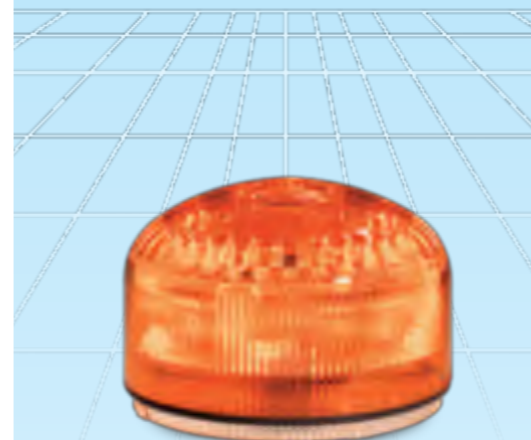
FLR S can be mounted on all **MLINE** modular bases that can be selected according to the following characteristics

- **Shape:** **SHALLOW** (ideal for flat surface mounting), **DEEP** (designed for surface mounting with pressure glands), **WALL** (designed for lateral/wall mounting), **FLUSH** (designed for flushmounted applications) and **DOUBLE** (designed for wall mounting of 2 **MLINE** devices)
- **Tension:** LT 12/24V ACDC, MT 30/80V ACDC, HT 90/240V AC
- **Color:** **allGRAY** (Industrial Light Gray RAL 7035), **allBLACK** (Industrial Black RAL 9005), **allRED** (Fire Alarm Red RAL 3000) and **allWHITE** (Civil/Commercial White RAL 9003)

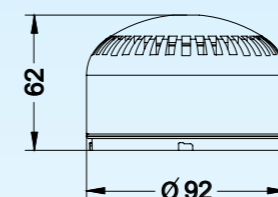
CODES

90351	90352	90353	90354
-------	-------	-------	-------

Data sheet : Ref. **DS.FLRS.ENG.0512**



	LT base		MT base		HT base	
V $\overline{\text{---}}$	12:24		30:80		-	
V \sim	-		-		90:240	
mA	380	460	325	125	100	60
dB(A)1m max 105 dB						
Flash/min. 0 / 3F: 85±10	On $\overline{\text{---}}$		IP 65			
32 + 32	°C -30 +50	PC	Self-extinguishing			



Multifunctional LED beacon-sounder that guarantees high optical performances as well as a high sound output. Developed with a multilevel technology, the device allows three separate levels of alarm (warning, alarm 1, alarm 2) controllable via separate electric contacts. SIR-E LED benefits from two light effects (steady, flashing) and 64 different sounds (selectable via 2 dip-switches).

KEY CHARACTERISTICS

- **Multifunction:** 3 separate functions (warning, alarm 1, alarm 2) controllable independently via separate electric contacts
- **High sound performances**
 - **First level of alarm:** a powerful triple-flash strobe effect that guarantees catching attention and warns operators of a potential danger or change of operating modes
 - **Second level of alarm:** a powerful triple-flash strobe effect combined with an up to 105 dB electronic sound, ideal for alerting staff of a danger or a serious change of operational circumstances (sound selectable via dip switch "A" out of 32 sounds)
 - **Third level of alarm:** a powerful steady light combined with an up to 105 dB electronic sound, ideal for alerting staff of a permanent change of operational circumstances (sound selectable via dip switch "B" out of 32 sounds)
- **Possibility of lowering the volume:** min. 65 dB circa
- **Multitone:** 64 sounds available, from fire alarm to civil tones
- **Four colors available:** red, amber, green and blue
- **SMD LED technology:** longer lifetime and better resistance to vibrations
- **High IP 65 rating:** also excellent for outdoor applications

MODULARITY

SIR-E LED can be mounted on all **MLINE** modular bases that can be selected according to the following characteristics

- **Shape:** **SHALLOW** (ideal for flat surface mounting), **DEEP** (designed for surface mounting with pressure glands), **WALL** (designed for lateral/wall mounting), **FLUSH** (designed for flushmounted applications) and **DOUBLE** (designed for wall mounting of 2 **MLINE** devices)
- **Tension:** LT 12/24V ACDC, MT 30/80V ACDC, HT 90/240V AC
- **Color:** **allGRAY** (Industrial Light Gray RAL 7035), **allBLACK** (Industrial Black RAL 9005), **allRED** (Fire Alarm Red RAL 3000) and **allWHITE** (Civil/Commercial White RAL 9003)

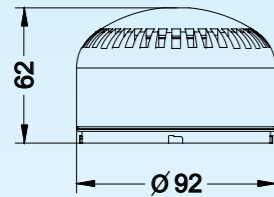
CODES

90361	90362	90363	90364
-------	-------	-------	-------

Data sheet: Ref. **DS.SIRELED.ENG.0512**



	LT base		MT base		HT base	
V $\overline{\text{---}}$	12:24		30:80		-	
V \sim	-		-		90:240	
mA	240	280	150	70	60	35
dB(A)1m max 105 dB						
°C	-30 + 50		On \times \times		IP 65	
	32 + 32		PC		Self-extinguishing	



Multifunctional electronic sounder that guarantees a high sound output. Developed with a multilevel technology, the device allows two separate levels of alarm (warning, alarm) controllable via separate electric contact. SIR-E benefits from 64 different sounds (selectable via 2 dip-switches).

KEY CHARACTERISTICS

- **Multifunction:** 2 separate functions (warning, alarm) controllable independently via separate electric contacts
- **High sound performances**
 - **First level of alarm:** a powerful up to 105 dB electronic sound, ideal for alerting staff of a danger or a serious change of operational circumstances (sound selectable via dip switch "A" out of 32 sounds)
 - **Second level of alarm:** a powerful up to 105 dB electronic sound, ideal for alerting staff of a permanent change of operational circumstances (sound selectable via dip switch "B" out of 32 sounds)
- **Possibility of lowering the volume:** min. 65 dB circa
- **Multitone:** 64 sounds available, from fire alarm to civil tones
- **Four color available:** gray, white, red and black
- **High IP 65 rating:** also excellent for outdoor applications

MODULARITY

SIR-E can be mounted on all MLINE modular bases that can be selected according to the following characteristics

- **Shape:** **SHALLOW** (ideal for flat surface mounting), **DEEP** (designed for surface mounting with pressure glands), **WALL** (designed for lateral/wall mounting), **FLUSH** (designed for flushmounted applications) and **DOUBLE** (designed for wall mounting of 2 MLINE devices)
- **Tension:** LT 12/24V ACDC, MT 30/80V ACDC, HT 90/240V AC
- **Color:** **allGRAY** (Industrial Light Gray RAL 7035), **allBLACK** (Industrial Black RAL 9005), **allRED** (Fire Alarm Red RAL 3000) and **allWHITE** (Civil/Commercial White RAL 9003)

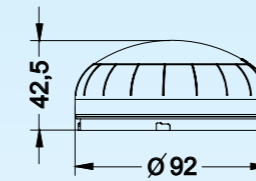
CODES

90360 90359 90358 90357

Data sheet: Ref. DS.SIRE.ENG.0512



	LT base		MT base		HT base	
V $\overline{\text{---}}$	12:24		30:80		-	
V \sim	-		-		90:240	
mA	300	270	240	100	80	50
Flash/min. 0 / 1F: 150±10 / 5F: 72±10 IP 65						
On \times \times	°C-30+50		PC		Self-extinguishing	



Flat LED multifunctional signaling device engineered to satisfy the most demanding applications. Developed on the bases of a modular technology, XLF S allows three different light effects (steady, blinking, strobe effect) controllable by separate electric contacts making this device the perfect choice for most applications.

XLF S utilizes a special combination of high-quality polymers with an opaline component which allows maximizing the optical output with an intense but diffused light output. Long-distance visibility is guaranteed by the centrally located intensity point allowing focusing on the device.

KEY FEATURES

- **Multifunctional:** 3 levels of alarm (steady, blinking, strobe effect) controllable independently via separate electric contacts
- **High optical performances**
 - **Steady light:** an intense and rich light output that allows gaining public attention yet without being disturbing
 - **Blinking light:** a constant blink ideal for signaling a change of operating conditions
 - **Strobe effect:** 5x flash (strobe effect) ideal for all applications where gaining public attention is a must
- **Four color available:** red, amber, green and blue
- **SMD LED technology:** higher resistance to vibrations allows to further increase product life
- **High IP 65 rating:** also excellent for outdoor applications

MODULARITY

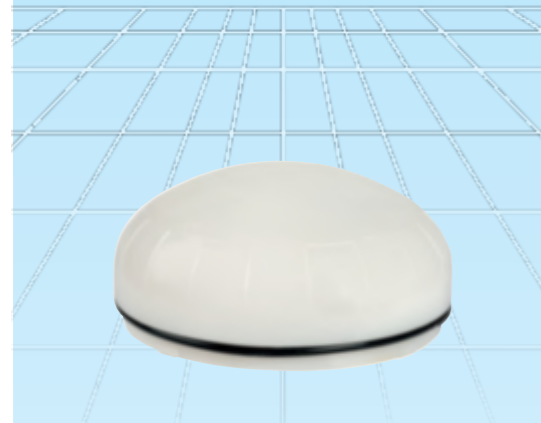
XLF S can be mounted on all MLINE modular bases that can be selected according to the following characteristics

- **Shape:** **SHALLOW** (ideal for flat surface mounting), **DEEP** (designed for surface mounting with pressure glands), **WALL** (designed for lateral/wall mounting), **FLUSH** (designed for flushmounted applications) and **DOUBLE** (designed for wall mounting of 2 MLINE devices)
- **Tension:** LT 12/24V ACDC, MT 30/80V ACDC, HT 90/240V AC
- **Color:** **allGRAY** (Industrial Light Gray RAL 7035), **allBLACK** (Industrial Black RAL 9005), **allRED** (Fire Alarm Red RAL 3000) and **allWHITE** (Civil/Commercial White RAL 9003)

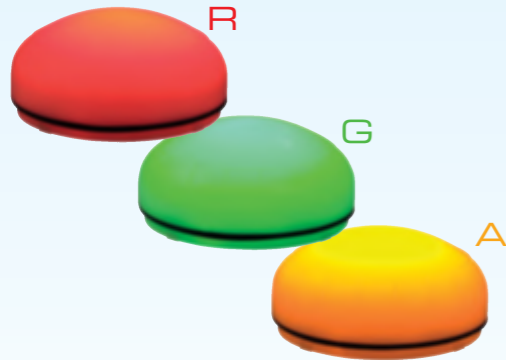
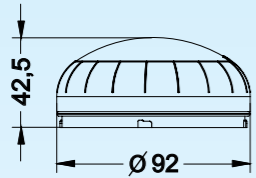
CODES

90501 90502 90503 90504

Data sheet: Ref. DS.XLFS.ENG.0512



	LT base	MT base		HT base	
V $\overline{\text{---}}$	12:24	30:80		90:240	
V \sim					
mA	370 310	250 100	90 55		
Flash/min. 0 / 1F: 150±10			IP 65		
On $\overline{\text{---}}$	°C -30+50	PC	Self-extinguishing		



Flat LED multicolor signaling device engineered to satisfy the most demanding applications. Developed on the bases of a modular technology, XLF RGA allows three different colors (red, green, amber) controllable by separate electric contacts making this device the perfect choice for most applications.

XLF RGA utilizes a special combination of high-quality polymers with an opaline component which allows maximizing the optical output with an intense but diffused light output.

KEY FEATURES

- **Multicolor:** 3 levels of alarm (red, amber, green) selectable independently via separate electric contacts
- **Multifunction:** 2 separate functions (Steady and Flashing) controllable via dip-switch independently for each channel
- **High optical performances**
 - **Green:** the standard in signaling to indicate "all clear" or "normal operating conditions"
 - **Amber:** the standard for indicating a change of operating conditions or warning of a potential danger
 - **Red:** the standard for indicating a stop of the operating conditions or a real danger
- **SMD LED technology:** higher resistance to vibrations allows to further increase product life
- **High IP 65 rating:** also excellent for outdoor applications

MODULARITY

XLF RGA can be mounted on all MLINE modular bases that can be selected according to the following characteristics

- **Shape:** **SHALLOW** (ideal for flat surface mounting), **DEEP** (designed for surface mounting with pressure glands), **WALL** (designed for lateral/wall mounting), **FLUSH** (designed for flushmounted applications) and **DOUBLE** (designed for wall mounting of 2 MLINE devices)
- **Tension:** LT 12/24V ACDC, MT 30/80V ACDC, HT 90/240V AC
- **Color:** **allGRAY** (Industrial Light Gray RAL 7035), **allBLACK** (Industrial Black RAL 9005), **allRED** (Fire Alarm Red RAL 3000) and **allWHITE** (Civil/Commercial White RAL 9003)

CODES



Data sheet: Ref. **DS.XLFRGA.ENG.0512**

SIR-E FA



	LT base	
V $\overline{\text{---}}$	12:24	
mA	45	35
dB(A)1m max 100 dB		
°C -30 + 50	On $\overline{\text{---}}$	IP 65
12 + 1	PC	Self-extinguishing

CODES

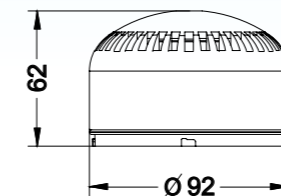


Data sheet: Ref. **DS.SIREFA.ENG.0512**

SIR-E LED FA



	LT base	
V $\overline{\text{---}}$	12:24	
mA	120	110
dB(A)1m max 100 dB		
Flash/min. 0 / 3F: 85±10	On $\overline{\text{---}}$	IP 65
12 + 1	°C -30 +50	PC Self-extinguishing



CODES



Data sheet: Ref. **DS.SIRELEDFA.ENG.0512**

EN54-3 approved multifunctional electronic sirens with excellent acoustic performances. Developed on the bases of a modular technology, the FA range allows two levels of alarm powered by 13 EN54-3 approved tones. SIR-E FA allows 12 pre-alarm tones available on the 1st level (selectable via a dip-switch) and 1 alarm steady tone (PFER TOXIC GAS) on the 2nd level. SIR-E LED FA, beside the same characteristics of the SIR-E FA, includes a luminous LED beacon.

KEY FEATURES

- **Multifunction:** 2 levels of alarm (pre-alarm, alarm)
- **High acoustic performances**
 - **Pre-alarm:** a powerful electronic tone of up to 105 dB ideal for signaling an imminent danger of a change to the standard conditions (12 EN54-3 approved tones selectable via dip-switch)
 - **Alarm:** a powerful electronic tone of up to 105 dB ideal for signaling a permanent danger or change to the standard conditions (1 EN54-3 approved tone: PFER TOXIC GAS)
- **Multitone:** 13 EN54-3 approved tones
- **High IP 65 rating:** also excellent for outdoor applications

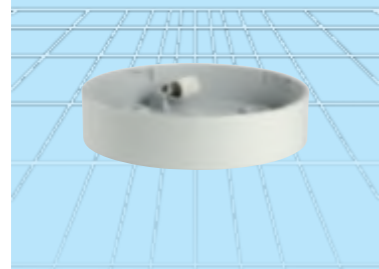
MODULARITY

SIR-E FA and SIR-E LED FA can be mounted on all MLINE modular bases that can be selected according to the following characteristics

- **Shape:** **SHALLOW** (ideal for flat surface mounting), **DEEP** (designed for surface mounting with pressure glands), **WALL** (designed for lateral/wall mounting), **FLUSH** (designed for flushmounted applications) and **DOUBLE** (designed for wall mounting of 2 MLINE devices)
- **Tension:** LT 12/24V DC
- **Color:** **allRED** (Fire Alarm Red RAL 3000) and **allWHITE** (Civil/Commercial White RAL 9003)

APPROVAL NUMBER
0068-CPD-0026

SHALLOW



LT 12/24V ACDC

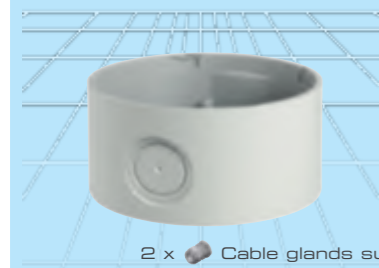
Base designed for surface mounting where cabling occurs from the bottom of the device and where a compact designed is required

CODES

LT SHALLOW 12/24V ACDC 90367 90344 90343 90451



DEEP



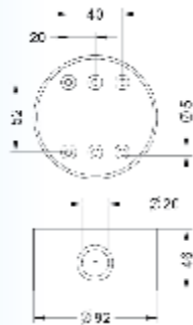
2 x Cable glands supplied

LT 12/24V ACDC
MT 30/80V ACDC
HT 90/240V AC

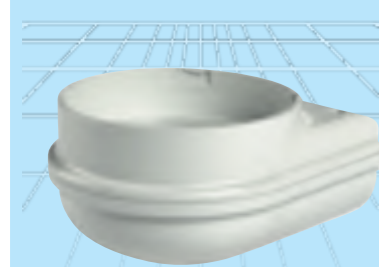
Base designed for surface mounting in conjunction with the use of pressure glands. This base allows up to two M20 pressure glands making this solution ideal for series mounting

CODES

LT DEEP 12/24V ACDC 90368 90346 90345 90452
MT DEEP 30/80V ACDC 90432 90437 90442 90455
HT DEEP 90/240V AC 90369 90509 90508 90458



WALL



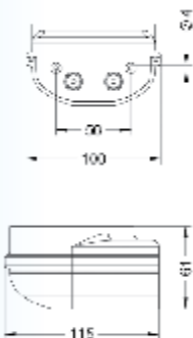
2 x Cable gland ready

LT 12/24V ACDC
MT 30/80V ACDC
HT 90/240V AC

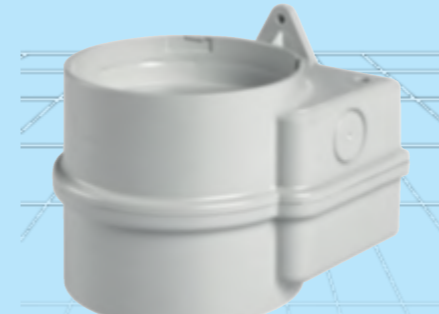
Base designed for lateral/wall mounting. Allows installing up to two M20 pressure glands making this product suitable also when it's not possible to wire the base of the signaling device

CODES

LT WALL 12/24V ACDC 90370 90348 90347 90453
MT WALL 30/80V ACDC 90433 90438 90443 90456
HT WALL 90/240V AC 90371 90511 90510 90459



DOUBLE



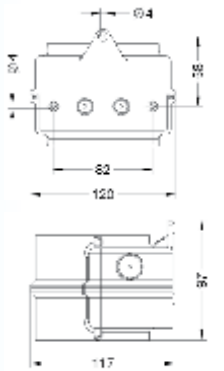
2 x Cable gland ready

LT 12/24V ACDC
MT 30/80V ACDC
HT 90/240V AC

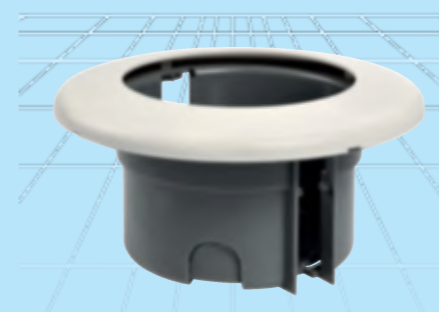
Base designed for lateral/wall mounting, it can mount up to two MLINE modules creating unique combinations between visual and acoustic devices whilst the multifunctionality of each module is guaranteed

CODES

LT DOUBLE 12/24V ACDC 90372 90374 90373 90454
MT DOUBLE 30/80V ACDC 90435 90440 90445 90457
HT DOUBLE 90/240V AC 90512 90514 90513 90460



FLUSH

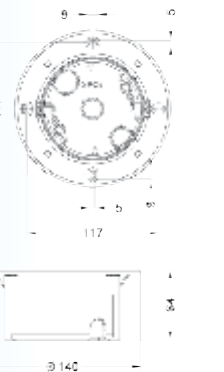


LT 12/24V ACDC
MT 30/80V ACDC
HT 90/240V AC

Base designed for flushmounted applications. It guarantees a simple and discrete installation of the device allowing a low visual impact when aesthetic is required like for example in Civil or Commercial installations

CODES

LT FLUSH 12/24V ACDC 90375 90349
MT FLUSH 30/80V ACDC 90439 90444
HT FLUSH 90/240V AC 90376 90446



MLINE One concept | Endless solutions

MLINE | JUNIOR

One concept | Endless solutions

**ENTRY-LEVEL OPTIONS
WITH THE SAME UNIQUE MODULARITY
AND PERFORMANCE BENEFITS
OF THE MLINE RANGE**



JUNIOR IS JUST MY NAME

SIRENA S.p.A.

**MORE THAN
BRIGHT IDEAS**

MLINE is a new and unique modular concept developed by Sirena which takes signaling devices to a whole new level delivering users with a customized product tailored for each specific application.

The high optical performances of the beacons, together with the strong sound output of the sounders makes **M**LINE a high-end range destined to the most demanding applications.

After a series of rigorous tests, **M**LINE has been granted IP 65 status, a very high rating, especially for sounders, making this product ideal also for outdoor applications.

MLINE has been engineered with a unique modular concept which allows each of the five domes to be mounted on any of the five bases, drastically reducing the number of parts stocked and allowing Professionals to have a more reactive response to the market needs.

Furthermore, the innovative design allows **M**LINE to become a key player also in Commercial and Civil applications besides more traditional Industrial applications.



JUNIOR

JUNIOR is the entry-level option for **MLINE** Domes and Bases.

Entry-level means that every **JUNIOR** element has been tailored to retain a high performance level yet improving its cost efficiency.

JUNIOR modules are fully compatible with standard **MLINE** domes and bases.

MLINE

SIR-E
32+32 tones
Max 105dB
2 Levels of alarm

SIR-E LED
32+32 tones
Max 105dB
3 Levels of alarm
6 Bright LEDs

XLF S
3 light effects: Steady, Flashing, Strobe

DEEP BASE HT
90/240V AC
Supports 3 channels

WALL BASE HT
90/240V AC
Supports 3 channels

COMPARISON TABLE

SIR-E JUNIOR
8+8 tones
Max 100dB
2 Levels of alarm

SIR-E LED JUNIOR
8+8 tones
Max 100dB
3 Levels of alarm
4 Bright LEDs

XLF JUNIOR
Steady light

DEEP BASE HT JUNIOR
90/240V AC
Supports 1 channel

WALL BASE HT JUNIOR
90/240V AC
Supports 1 channel

MLINE JUNIOR



SIR-E JUNIOR



SIR-E LED JUNIOR



XLF JUNIOR



HT DEEP JUNIOR



HT WALL JUNIOR

SIR-E JUNIOR



G B R W

CAN BE INSTALLED WITH



SIR-E JUNIOR | PART NO

	G	B	R	W
EUR	90417	90420	90419	90418
APAC	90387	90390	90389	90388

SIR-E JUNIOR

Multifunctional electronic sounder developed with a multilevel technology that allows two separate levels of alarm (pre-alarm, alarm) controllable via independent electric contacts. Each level (1 and 2) is provided with 8 tones selectable via dip-switch for a total of 16 tones.

2 LEVELS OF ALARM

LEVEL 1 | PRE-ALARM

1 tone selectable out of 8 via dip-switch

LEVEL 2 | ALARM

1 tone selectable out of 8 via dip-switch

European (EUR) and Asia Pacific (APAC) tones available.

TECHNICAL SPECIFICATIONS

OPERATING TENSION

According to selected base

LT 12/24V ACDC

MT 30/80V ACDC

HT 90/240V AC

PROTECTION GRADE

IP65

SOUND OUTPUT

16 tones (8 per channel). Max 100dB(A)1m

OPERATING TEMPERATURE

-30 / +50 degrees C

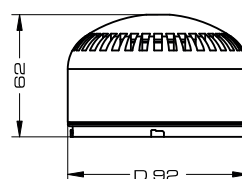
MECHANICAL FEATURES

Self-extinguishing PC body totally protected against vibrations, dust and atmospheric elements. Weather protection guaranteed by the EPDM o-ring type gasket present on all modules

APPROVALS

CE, GOST, UL (pending)

TECHNICAL DRAWING



SIR-E LED JUNIOR



B A R G

CAN BE INSTALLED WITH



SIR-E LED JUNIOR | PART NO

	B	A	R	G
EUR	90401	90402	90403	90404
APAC	90421	90422	90423	90424

SIR-E LED JUNIOR

Multifunctional LED beacon sounder developed with a multilevel technology that allows three separate levels of alarm (alert, pre-alarm, alarm) controllable via independent electric contacts. SIR-E LED JUNIOR benefits from two light effects (steady, flashing) and 16 different tones (selectable via dip-switch).

3 LEVELS OF ALARM

LEVEL 1 | ALERT

Flashing light

LEVEL 2 | PRE-ALARM

Flashing light + 1 tone selectable out of 8 via dip-switch

LEVEL 3 | ALARM

Steady light + 1 tone selectable out of 8 via dip-switch

European (EUR) and Asia Pacific (APAC) tones available.

TECHNICAL SPECIFICATIONS

OPERATING TENSION

According to selected base
LT 12/24V ACDC
MT 30/80V ACDC
HT 90/240V AC

PROTECTION GRADE

IP65

SOUND OUTPUT

16 tones (8 per channel). Max 100dB(A)1m

LIGHT OUTPUT

4 bright LEDs. Flashing mode: 3F (85 +/-10 fpm)

OPERATING TEMPERATURE

-30 / +50 degrees C

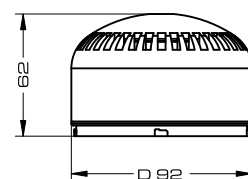
MECHANICAL FEATURES

Self-extinguishing PC body totally protected against vibrations, dust and atmospheric elements. Weather protection guaranteed by the EPDM o-ring type gasket present on all modules

APPROVALS

CE, GOST, UL (pending)

TECHNICAL DRAWING



XLF JUNIOR



B **A** **R** **G**

CAN BE INSTALLED WITH



XLF JUNIOR I PART NO

	B	A	R	G
PROXIMITY	90831	90832	90833	90834
DIRECTIONAL	90841	90842	90843	90844

XLF JUNIOR

Steady light LED beacon, particularly indicated when there is no necessity of flashing effects or when the device is controlled by PLC.

Available with Proximity or Directional lenses, XLF JUNIOR is the ideal choice for a price efficient, high quality light device.

PROXIMITY

Opaline lens for "near" signalization

DIRECTIONAL

Fresnel lens for "long-distance" signalization

TECHNICAL SPECIFICATIONS

OPERATING TENSION

According to selected base
LT 12/24V ACDC
MT 30/80V ACDC
HT 90/240V AC

PROTECTION GRADE

IP65

LIGHT OUTPUT

6 bright LEDs

OPERATING TEMPERATURE

-30 / +50 degrees C

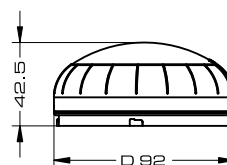
MECHANICAL FEATURES

Self-extinguishing PC body totally protected against vibrations, dust and atmospheric elements. Weather protection guaranteed by the EPDM o-ring type gasket present on all modules

APPROVALS

CE, GOST, UL (pending)

TECHNICAL DRAWING



HT BASE JUNIOR



DEEP



WALL



G B R W

CAN BE INSTALLED WITH



SIR-E
SIR-E JUNIOR

G B R W



SIR-E LED
SIR-E LED JUNIOR



FLR S

B A R G



XLF
XLF JUNIOR



XLF RGA

R G A

HT BASE JUNIOR | PART NO

	G	B	R	W
DEEP	90827	90829	90839	90837
WALL	90828	90830	90840	90838

HT BASE JUNIOR

Monofunctional high voltage base (90/240V AC) ideal for powering any **M**LINE dome.

Available in DEEP and WALL shapes and in allGRAY, allBLACK, allRED and allWHITE colors.

When installed with multifunctional domes, only one of the three functions can be connected.

Ideal for providing a cost effective solution when multifunctionality is not needed or when one only of the available functions is required.

TECHNICAL SPECIFICATIONS

OPERATING TENSION
HT 90/240V AC

PROTECTION GRADE
IP65

OPERATING TEMPERATURE
-30 / +50 degrees C

MECHANICAL FEATURES

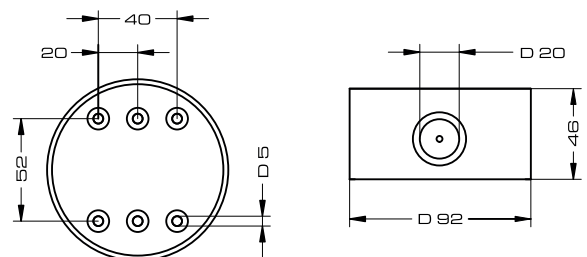
Self-extinguishing PC body totally protected against vibrations, dust and atmospheric elements. Weather protection guaranteed by the polyurethane gasket present on all modules

APPROVALS

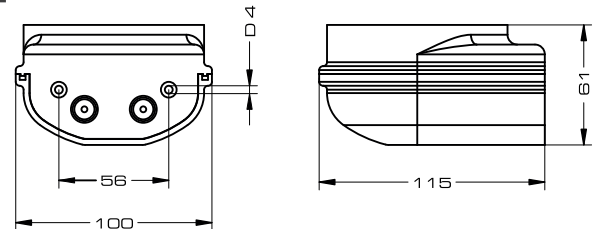
CE, GOST, UL (pending)

TECHNICAL DRAWING

DEEP



WALL



MLINE | JUNIOR

One concept | Endless solutions

**ENTRY-LEVEL OPTIONS
WITH THE SAME UNIQUE MODULARITY
AND PERFORMANCE BENEFITS
OF THE MLINE RANGE**



MADE IN ITALY

Engineered,
Developed and
Assembled in
Rosta, Italy

MLINE is Sirena's range of modular and multifunctional signaling devices engineered for civili and industrial applications

mline@sirena.it

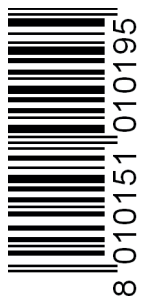
 **SIRENA** S.p.A.

Sirena S.p.A.

C.so Moncenisio 5-10-12-14-16 | 10090 Rosta (TO) | Italia

Tel +39 011 95 68 555 (25 linee ISDN) | Fax +39 011 95 67 928
www.sirena.it | sirena.spa@sirena.it

R.E.A. 487901 | Mecc. TO 027549 | Registro Imprese TO C.F. 01047730013
Partita IVA IT 01047730013 | Capitale sociale € 5.000.000 di cui versato € 5.000.000



8 010151 010195

ELECTRA | P40

Industrial Signaling since 1974

**A UNIQUE RANGE OF SIGNALING
DEVICES ENGINEERED FOR PANEL
MOUNTED APPLICATIONS**



THE WINNING COMBINATION

 **SIRENA** s.p.a.

**MORE THAN
BRIGHT IDEAS**

ELECTRA is Sirena's range of Industrial Signaling devices.

Since 1974 Sirena has had only one mission: delivering the best signaling devices in the world.

We keep this in mind everyday and at every stage of development of our products.

From concept designs to final prototypes we share the passion for innovation that lays right in the foundation of Sirena's legacy.

No matter what the final application is, we always strive to bring the best possible solutions.

ELECTRA is the most complete range of signaling devices on the market, whatever your need is, we will not only help you to find a solution, we will give you the best solution.



ELECTRA

P40

P40 is a unique range of signaling devices engineered for panel mounted applications.

With four devices to choose from and a complete selection of domes and base colors, **P40** offers the perfect solution for each application.

Each device is multifunctional allowing three separate functions to be operated via independent electrical contacts. This allows the entire chain of alarm to be escalated, from alert, to pre-alarm, to alarm.

The luminous devices have been engineered to deliver high optical performances from every angle whilst the acoustic devices are crafted for delivering a tone tailored for electrical panels.

So, whenever you are thinking which signaling devices you are going to install next on your high-end electrical panels, you know it's **P40** time...



P40 S



P40 S | PART NO

GY — BASE — BK

B	12/24V ACDC	91131	91141
	48/240V AC	91151	91161
A	12/24V ACDC	91132	91142
	48/240V AC	91152	91162
R	12/24V ACDC	91133	91143
	48/240V AC	91153	91163
G	12/24V ACDC	91134	91144
	48/240V AC	91154	91164
Y	12/24V ACDC	91135	91145
	48/240V AC	91155	91165
C	12/24V ACDC	91136	91146
	48/240V AC	91156	91166

P40 S

Multifunctional LED beacon engineered for panel mounting. Developed with a multilevel technology, the device allows three different light effects (steady, flashing, strobe) controllable via independent electric contacts.

3 LEVELS OF ALARM

LEVEL 1 | STEADY LIGHT

Deep and rich light source ideal for signaling a machine status yet without disturbing

LEVEL 2 | FLASHING LIGHT

Flashing light ideal for attracting attention and warn of a potential dangerous situation

LEVEL 3 | STROBE LIGHT

Strobe-effect light ideal for all applications where an immediate attention gain is mandatory

TECHNICAL SPECIFICATIONS

OPERATING TENSION

LT 12/24V ACDC
HT 48/240V AC

PROTECTION GRADE

IP66

LIGHT OUTPUT

4 bright LEDs

OPERATING TEMPERATURE

-30 / +50 degrees C

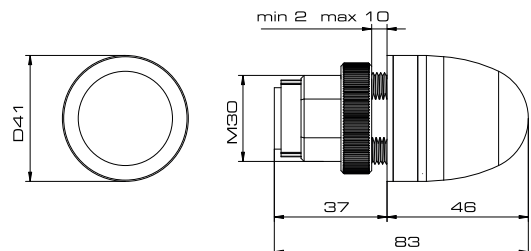
MECHANICAL FEATURES

Self-extinguishing PC body totally protected against vibrations, dust and atmospheric elements. Weather protection guaranteed by EPDM o-ring on dome and polyurethane gasket on base. Can be panel mounted through a D30 hole and secured with the locking ring provided

APPROVALS

CE, GOST, UL (pending)

TECHNICAL DRAWING



P40 RGA



RGA

P40 RGA

Multicolor LED beacon engineered for panel mounting. Developed with a multilevel technology, the device allows three different colors (red, amber, green) controllable via independent electric contacts.

3 LEVELS OF ALARM

LEVEL 1 | GREEN

Standard of signaling indicating "all clear" or "normal operating conditions"

LEVEL 2 | AMBER

Standard of signaling for indicating a change of operating conditions or warning of a potential danger

LEVEL 3 | RED

Standard of signaling for indicating a stop of the operating conditions or a real danger

TECHNICAL SPECIFICATIONS

OPERATING TENSION

LT 12/24V ACDC
HT 48/240V AC

PROTECTION GRADE

IP66

LIGHT OUTPUT

1 superbright LED

OPERATING TEMPERATURE

-30 / +50 degrees C

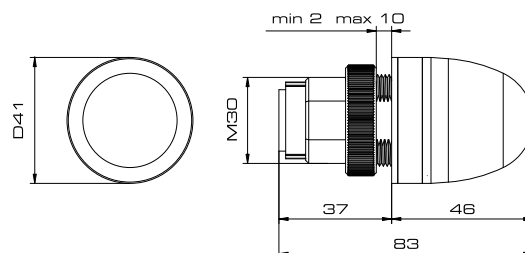
MECHANICAL FEATURES

Self-extinguishing PC body totally protected against vibrations, dust and atmospheric elements. Weather protection guaranteed by EPDM o-ring on dome and polyuretanic gasket on base. Can be panel mounted through a D30 hole and secured with the locking ring provided

APPROVALS

CE, GOST, UL (pending)

TECHNICAL DRAWING



P40 RGA | PART NO

		GY	BASE	BK
RGA	STEADY	12/24V ACDC	91167	91169
		48/240V AC	91171	91173
RGA	FLASH	12/24V ACDC	91168	91170
		48/240V AC	91172	91174

P40 A



P40 A | PART NO

GY	12/24V ACDC	91177
	48/240V AC	91179
BK	12/24V ACDC	91178
	48/240V AC	91180

P40 A

Piezoelectrical sounder engineered for panel mounting. Developed with a multilevel technology, the device allows two different levels of alarm (pre-alarm, alarm) controllable via independent electric contacts.

2 LEVELS OF ALARM

LEVEL 1 | PRE-ALARM

Intermittent sound

LEVEL 2 | ALARM

Continuous sound

TECHNICAL SPECIFICATIONS

OPERATING TENSION

LT 12/24V ACDC
HT 48/240V AC

PROTECTION GRADE

IP65

SOUND OUTPUT

85dB(A)1m

OPERATING TEMPERATURE

-30 / +50 degrees C

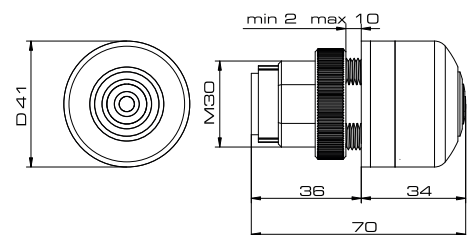
MECHANICAL FEATURES

Self-extinguishing PC body totally protected against vibrations, dust and atmospheric elements. Weather protection guaranteed by EPDM o-ring on dome and polyurethane gasket on base. Can be panel mounted through a D30 hole and secured with the locking ring provided

APPROVALS

CE, GOST, UL (pending)

TECHNICAL DRAWING



P40 A LED



P40 A LED

Piezoelectrical sounder with LED light engineered for panel mounting. Developed with a multilevel technology, the device allows three levels of alarm (alert, pre-alarm, alarm) controllable via independent electric contacts.

3 LEVELS OF ALARM

LEVEL 1 | ALERT

Flashing light

LEVEL 2 | PRE-ALARM

Flashing light + Intermittent sound

LEVEL 3 | ALARM

Steady light + Continuous sound

TECHNICAL SPECIFICATIONS

OPERATING TENSION

LT 12/24V ACDC
HT 48/240V AC

PROTECTION GRADE

IP65

SOUND OUTPUT

85dB(A)1m

LIGHT OUTPUT

3 bright LEDs

OPERATING TEMPERATURE

-30 / +50 degrees C

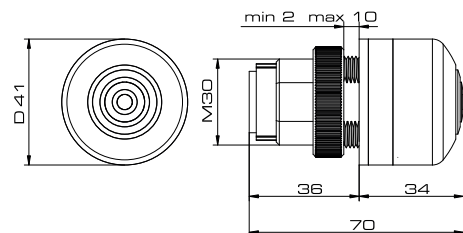
MECHANICAL FEATURES

Self-extinguishing PC body totally protected against vibrations, dust and atmospheric elements. Weather protection guaranteed by EPDM o-ring on dome and polyurethane gasket on base. Can be panel mounted through a D30 hole and secured with the locking ring provided

APPROVALS

CE, GOST, UL (pending)

TECHNICAL DRAWING



P40 A LED | PART NO

		GY	BASE	BK
A	12/24V ACDC	91182		91192
	48/240V AC	91202		91212
R	12/24V ACDC	91183		91193
	48/240V AC	91203		91213
G	12/24V ACDC	91184		91194
	48/240V AC	91204		91214

ELECTRA | P40

Industrial Signaling since 1974

**A UNIQUE RANGE OF SIGNALING
DEVICES ENGINEERED FOR PANEL
MOUNTED APPLICATIONS**



MADE IN ITALY

Engineered,
Developed and
Assembled in
Rosta, Italy

ELECTRA is Sirena's range of high-end signaling devices engineered, developed and manufactured for industrial applications

electra@sirena.it

 **SIRENA** S.p.A.

Sirena S.p.A.

C.so Moncenisio 5-10-12-14-16 | 10090 Rosta (TO) | Italia

Tel +39 011 95 68 555 (25 linee ISDN) | Fax +39 011 95 67 928
www.sirena.it | sirena.spa@sirena.it

R.E.A. 487901 | Mecc. TO 027549 | Registro Imprese TO C.F. 01047730013
Partita IVA IT 01047730013 | Capitale sociale € 5.000.000 di cui versato € 5.000.000

